



604.25 PRECAST REINFORCED CONCRETE PIPE
DROP INLET WITH CAST IRON GRATE TYPE B

STN 1+220.0 RT.

605.10 150 mm UNDERDRAIN

STN 1+220.0 - 1+300.0 RT.
~~300.0~~
290.0

605.95 UNDERDRAIN FLUSHING BASIN

STN 1+300.0 RT.
~~300.0~~
290.0

621.21 HEAVY DUTY STEEL BEAM GUARD RAIL, TYPE 4

STN 1+198.0 - 1+262.0 LT.

621.60 ANCHOR FOR STEEL BEAM GUARD RAIL

STN 1+200.0 LT. STN 1+260.0 LT.

649.31 GEOTEXTILE UNDER STONE FILL

STN 1+218.0 - 1+260.0 LT.

613.11 STONE FILL, TYPE II

STN 1+212.0 - 1+245.0 RT.

613.12 STONE FILL, TYPE III

STN 1+218.0 - 1+260.0 LT.

651.40 GRUBBING MATERIAL
50.0

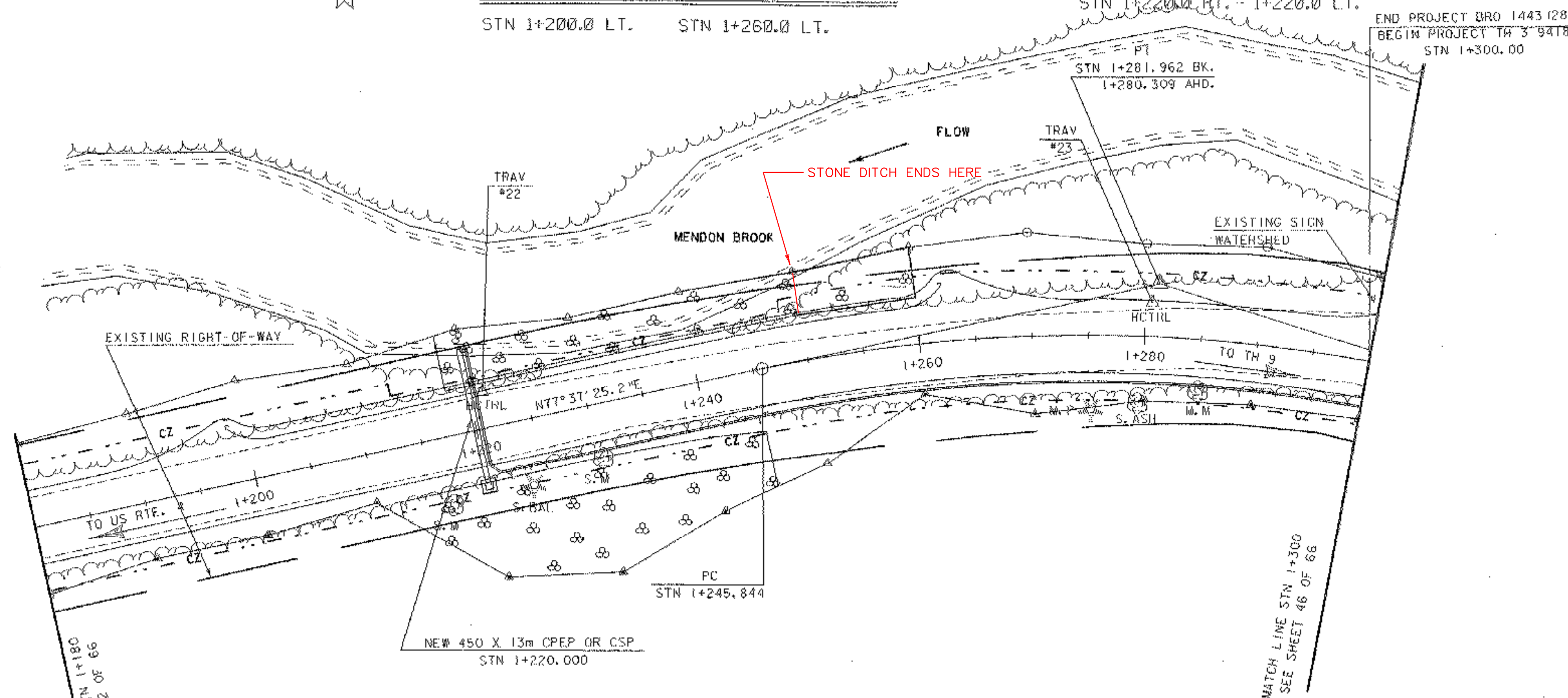
STN 1+218.0 - 1+260.0 LT.

STN 1+212.0 - 1+245.0 RT.

601.2615 450 CPEP OR CSP OPTION

STN 1+220.0 RT. - 1+220.0 LT.

END PROJECT BRO 1443(28)
BEGIN PROJECT TH 3 94TH
STN 1+300.00



Curve #3

Radius:	135.000
Delta:	29°57'23.5"R
Length:	70.583
Tangents:	36.218
Chord:	69.782
Ordinate:	4.587
External:	4.748
2T-L:	1.653
Banking:	0.040

C.Z. = CLEAR ZONE



PROJECT: MENDON	PROJECT NO.: BRO 1443(28)
DESIGN FILE NAME: /USR/STRI/93J022/SJ022BDR.DGN	PLOT DATE: 5-JUN-1998
IPARM FILE NAME: SJ022LS21	PLAN SHEET
SHEET: 13 OF 66	