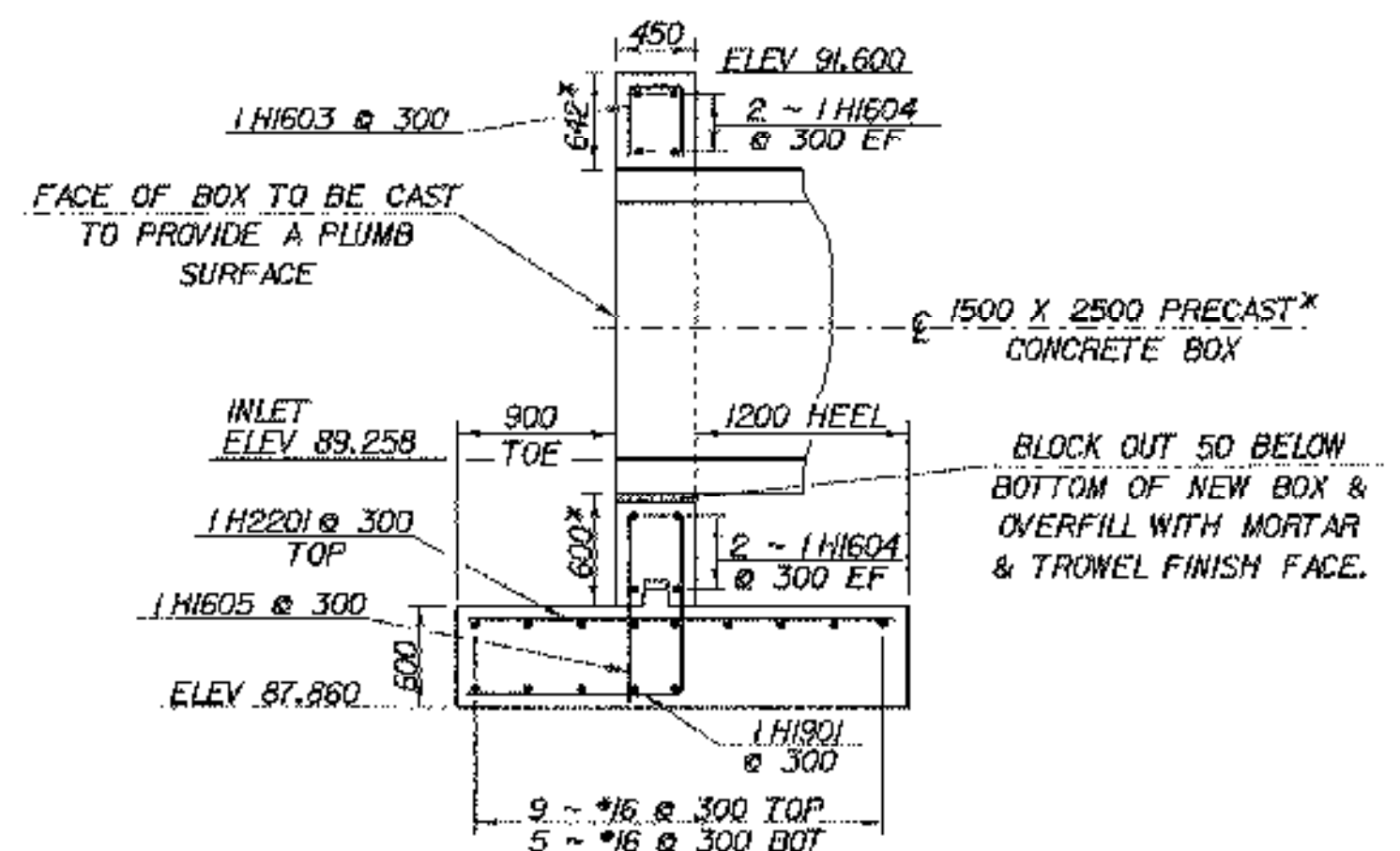
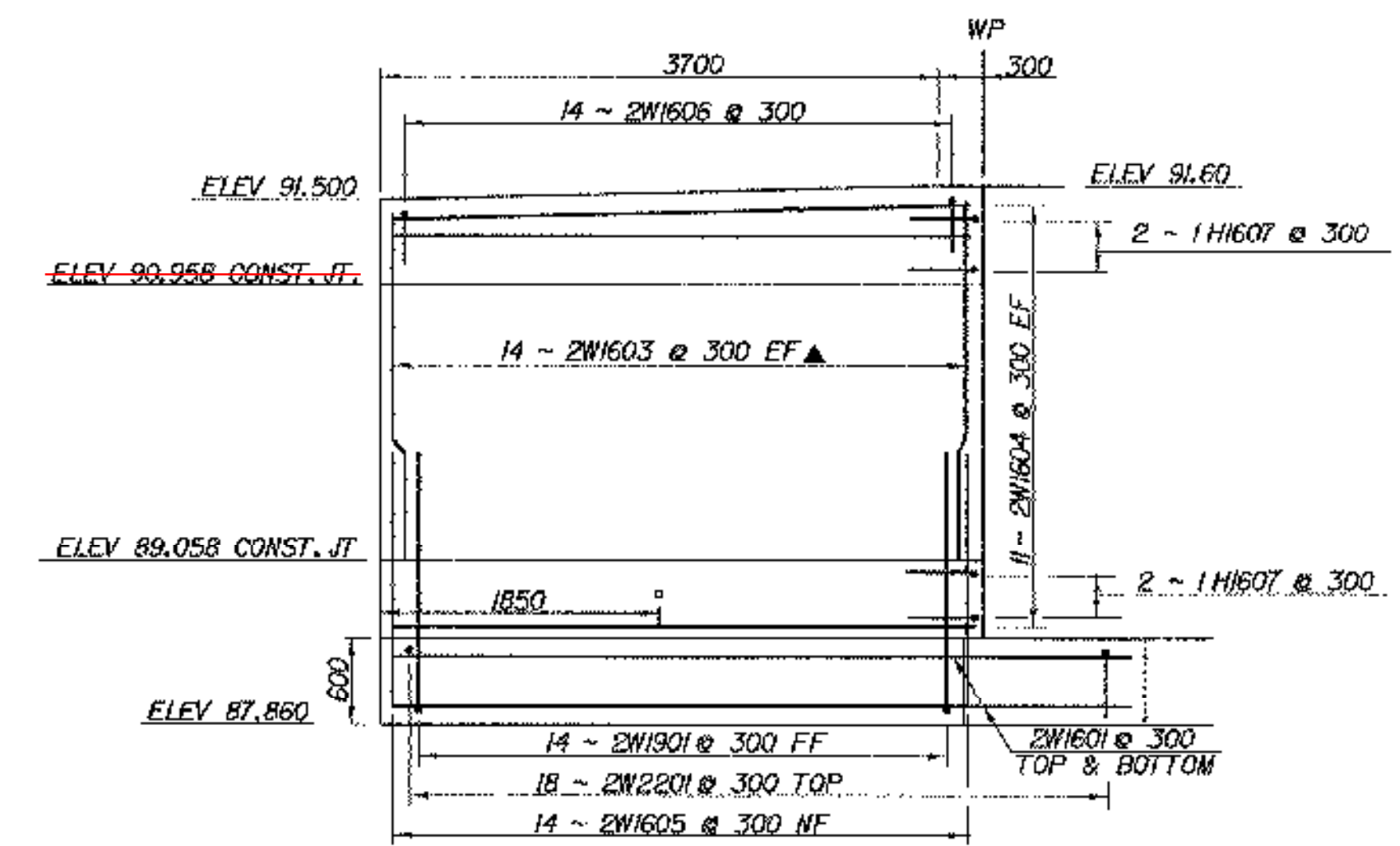


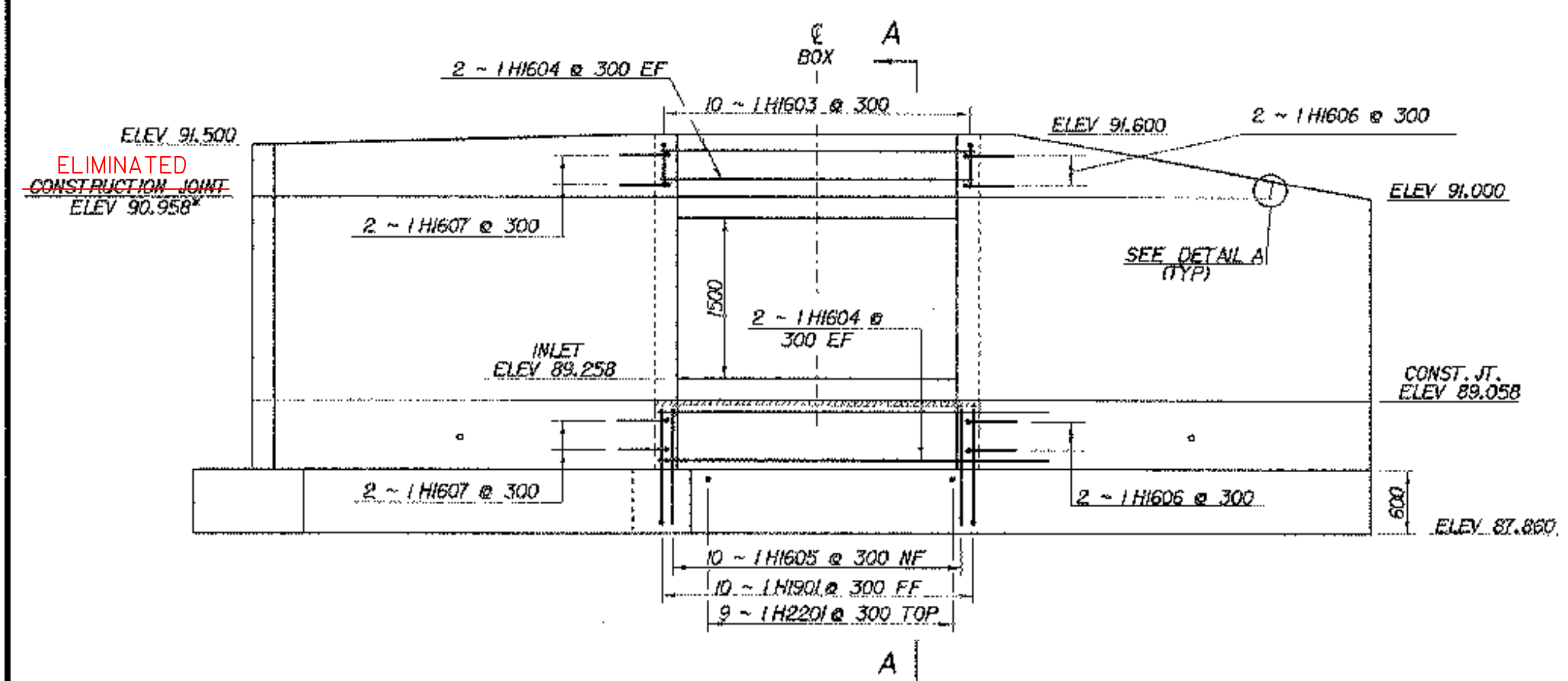
HEADWALL NO. 1 PLAN AT INLET
SCALE - 1:40



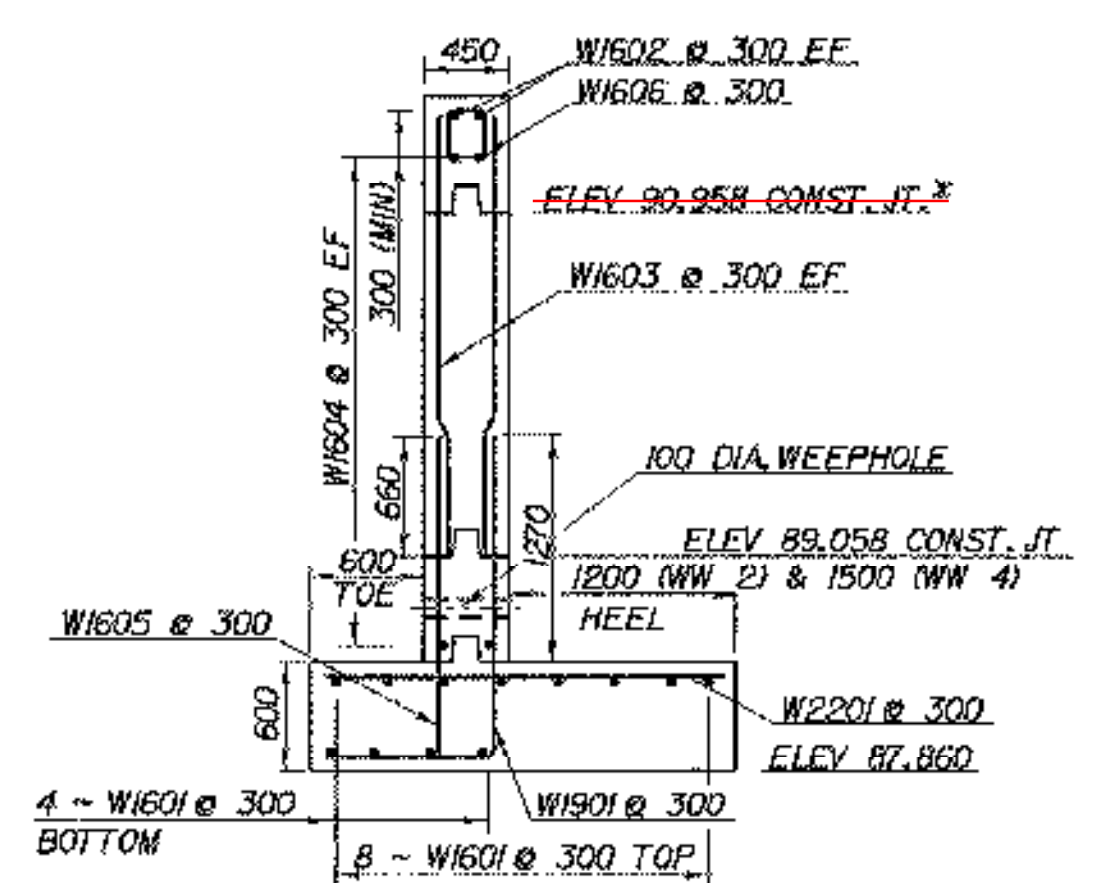
INLET HEADWALL SECTION A-A
SCALE - 1:40



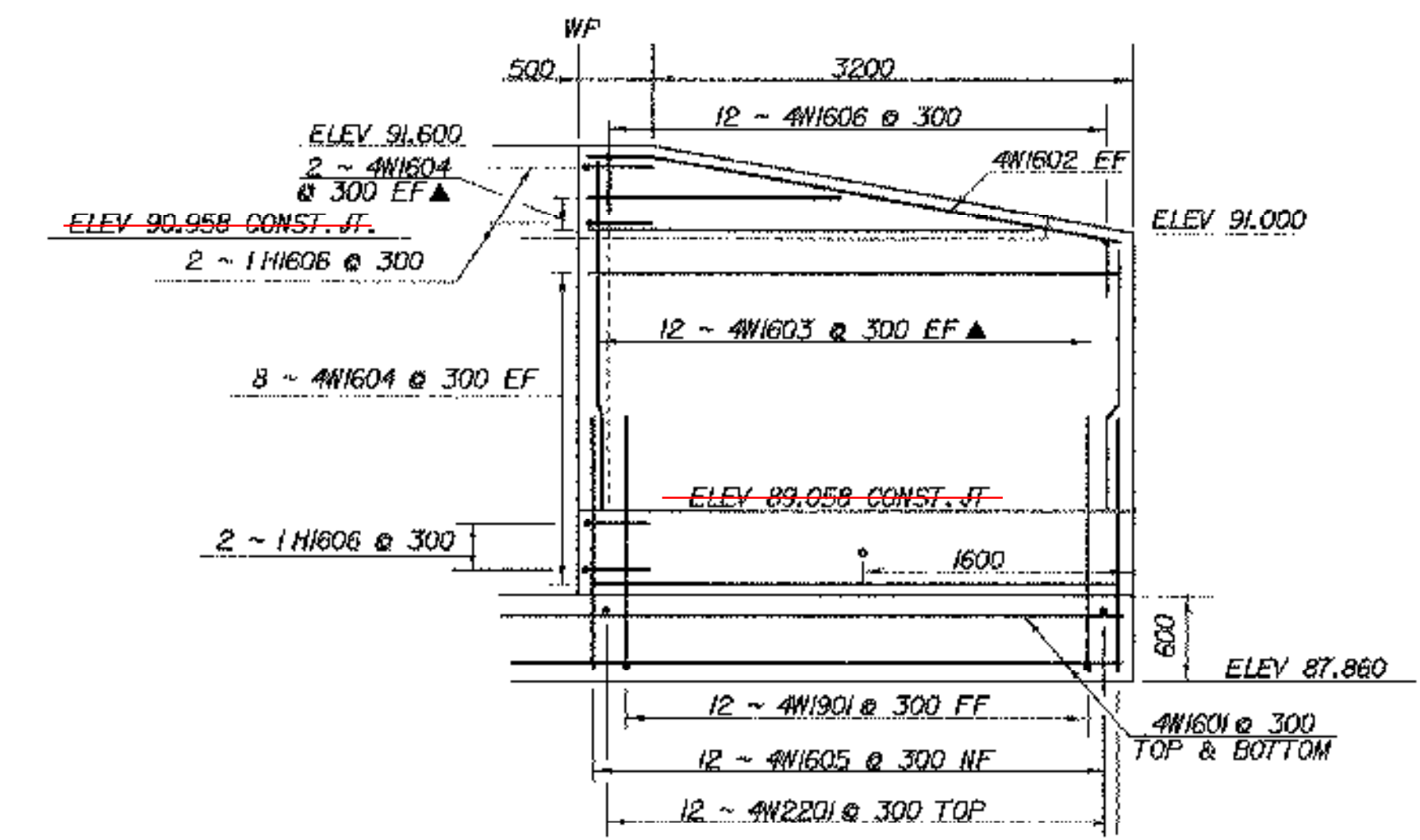
WINGWALL NO. 2 ELEVATION
SCALE - 1:40



HEADWALL NO. 1 ELEVATION
SCALE - 1:40



WINGWALL SECTION TYPICAL
SCALE - 1:40

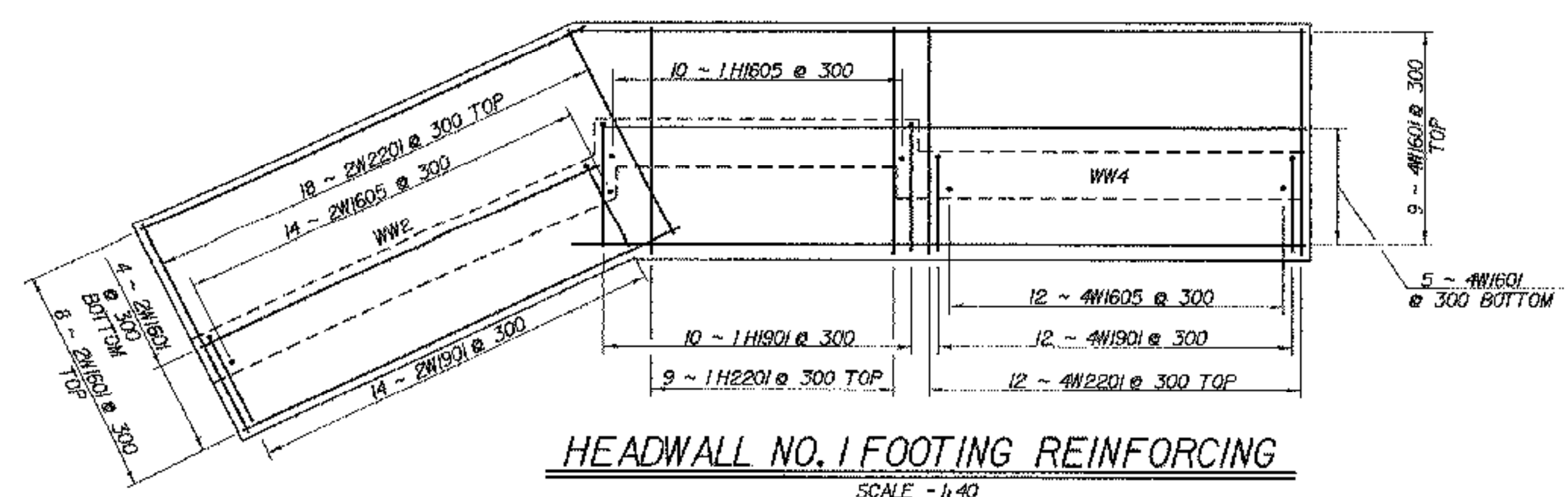


WINGWALL NO. 4 ELEVATION
SCALE - 1:40

* DIMENSIONS SHOWN ARE FOR AN ASSUMED RC BOX WALL THICKNESS OF 200 mm. ACTUAL DIMENSIONS MAY VARY.



CONSTRUCTION JOINT ELIMINATED IN WINGS



HEADWALL NO. 1 FOOTING REINFORCING
SCALE - 1:40

DETAIL A (TYP)
SCALE - 1:20

NOTE:
NF - NEAR FACE
FF - FAR FACE
EF - EACH FACE
▲ - CUT TO FIT IN FIELD
BO CLR. UNLESS OTHERWISE SPECIFIED ON THE PLANS.
3000 MAX WEEPHOLE SPACING

SHEET NAME: HEADWALL NUMBER 1	
PROJECT NAME: FAIR HAVEN-HAMPTON	HIGHWAY NO.: TH 6
PROJECT NUMBER: BRO 1443(32)	BRIDGE NO.: 6
FILE NAME: /srl/93j021/sj02ibox.dgn	OVER: POULTNEY RIVER
PROJECT MANAGER: G.S. ROGERS	PLOT DATE: 23-MAR-2005
DESIGNED BY: C. MEUNIER	DRAWN BY: J.GILMORE
BRIDGE SHEET NUMBER:	IPARM NAME: sj02ibx8.1
	SHEET 32 OF 53

REVISED 14-MAR-03