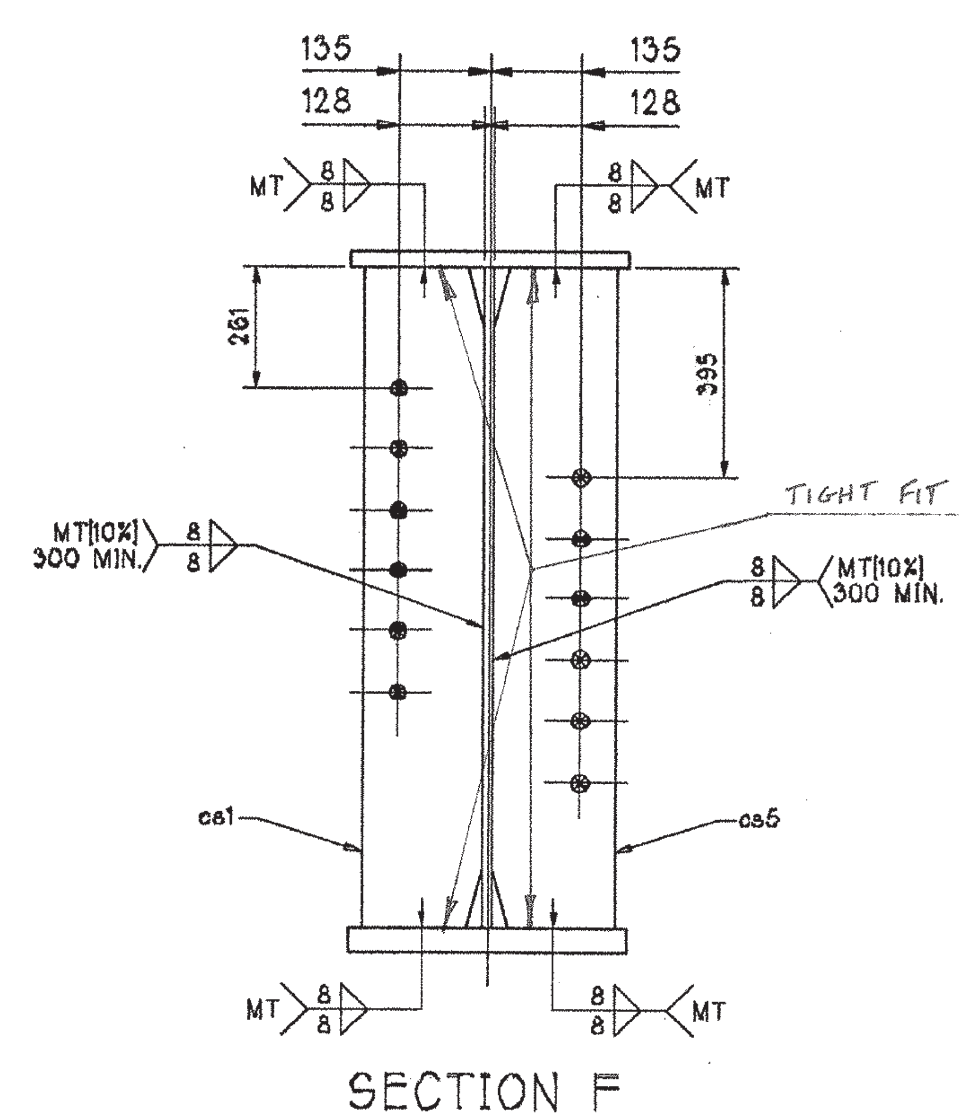
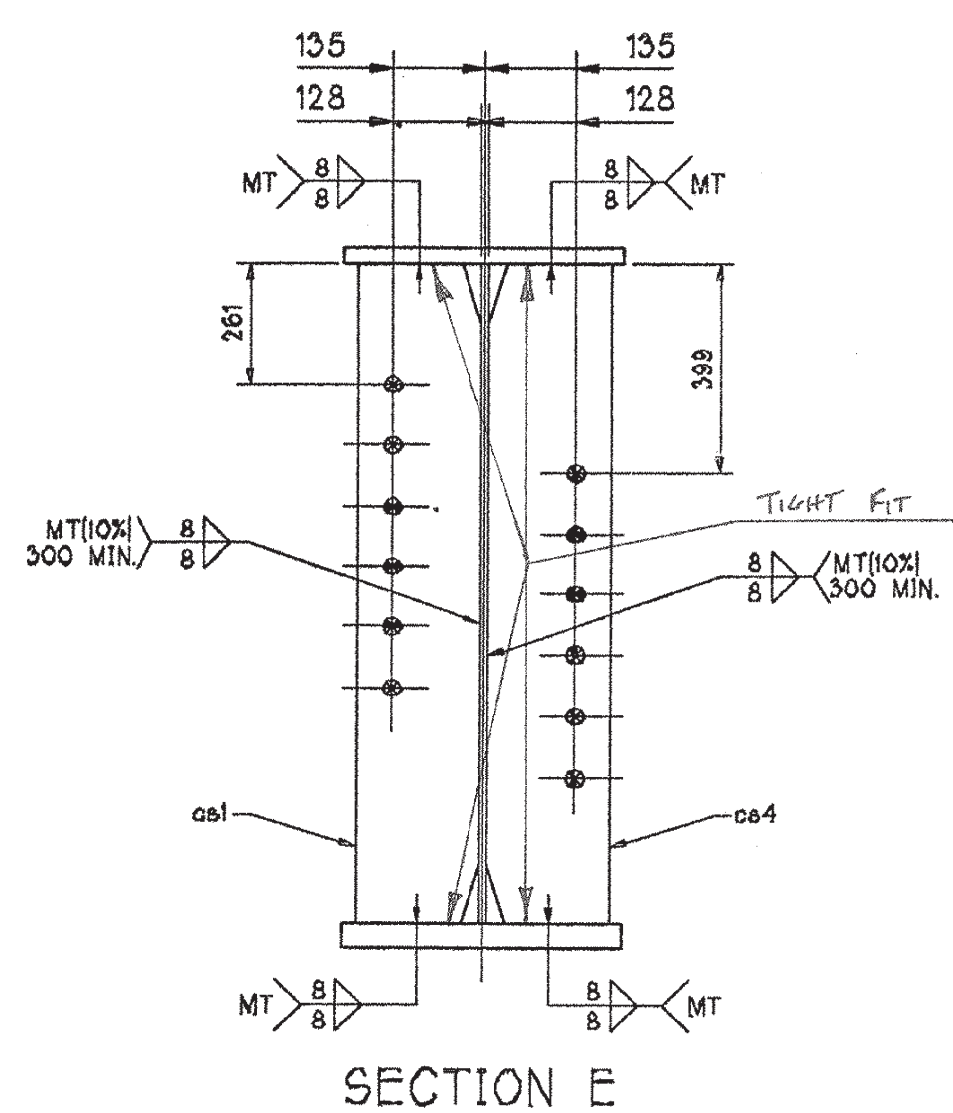
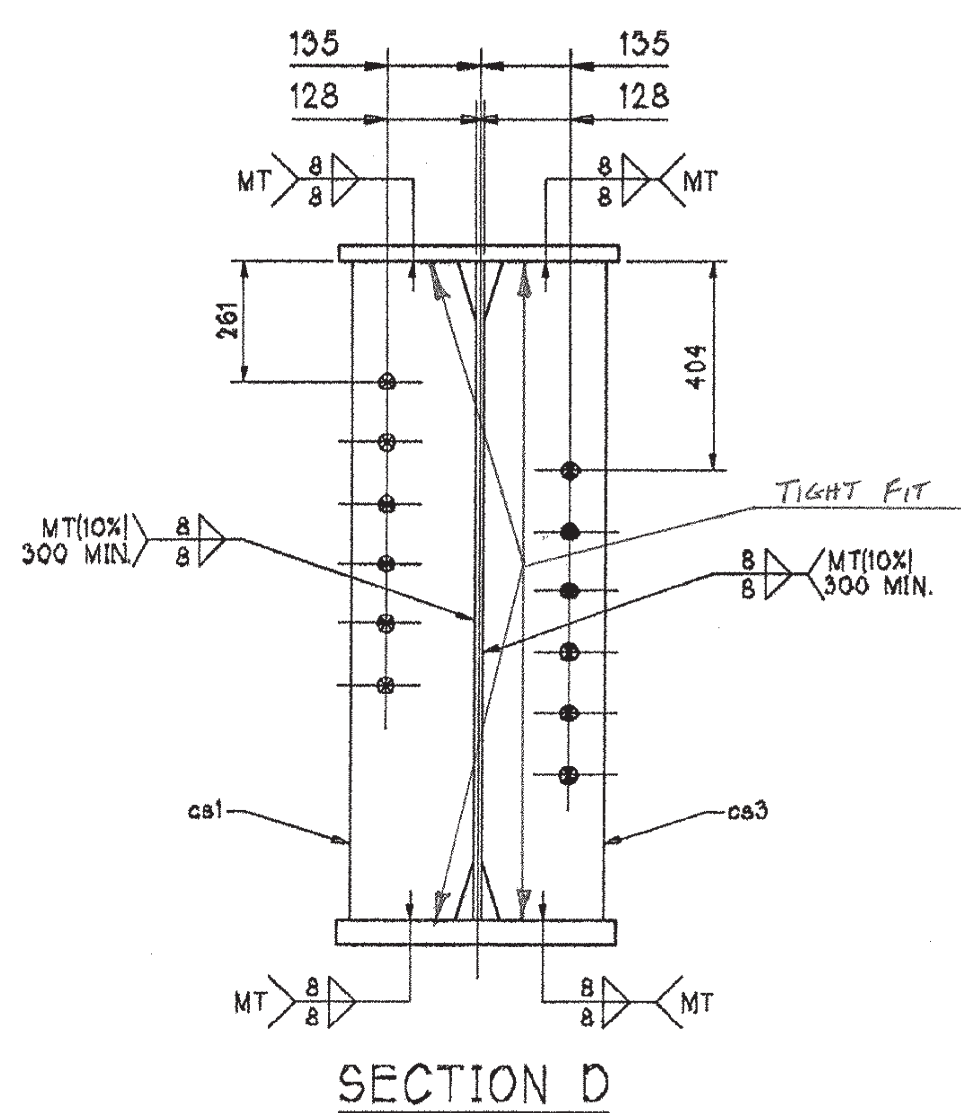
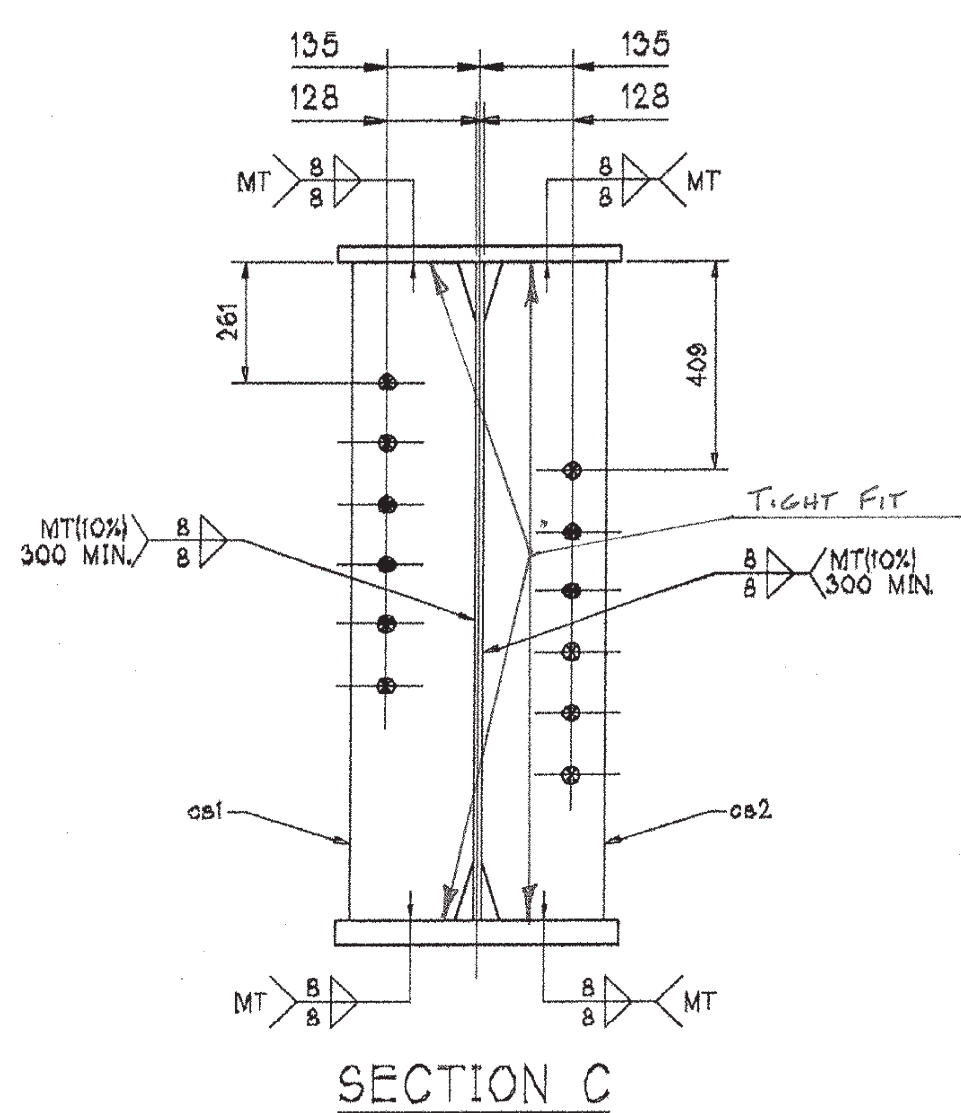


GIRDER MK. G3



BILL OF MATERIAL				WORK ORDER NO.	DRAWING NO.	REV.		
MARK	QTY.	MK.	SHAPE	LENGTH	WT.(KG)	P/MR P/L	SUPPL. P/L	REMARKS
G3	ONE		GIRDER	25 358	7235			
	1	if1	PL 22 X 406	25 320	1775	SI 5		CVN-T2
	1	wp1	PL 13 X 965	25 358	2498	SI 3		CVN-T2
	1	bf1	PL 35 X 406	25 300	2822	SI 6		CVN-T2
	4	cs1	PL 13 X 178	965	70	SI 3		
	1	cs2	PL 13 X 178	965	17.5	SI 3		
	1	cs3	PL 13 X 178	965	17.5	SI 3		
	1	cs4	PL 13 X 178	965	17.5	SI 3		
	1	cs5	PL 13 X 178	965	17.5	SI 3		

RECEIVED
 OK'D BY: *ML*, OK'D BY: *CS*
 APR 14 2003
 RESUBMIT APPROVED *AS NOTED*
 BY *GSR* DATE *4/15/03*

FOR APPROVAL

NOTES:

1. FOR CAMBER & FLG. CUTTING DIAGRAMS, SEE DWG. 10-1
2. FOR GIRDER STANDARD DETAILS, SEE DWG. 10-2
3. FOR GENERAL NOTES, SEE DWG. GN1

*: BLAST CLEAN BEFORE OR AFTER FAB. M270,GR.3+5W

STEEL: ASTM A709-36 A709-50 A709-50W Unless Noted

WELDING ELECTRODE: E70 See Welding Proc. None

HOLES: 13/16 15/16 Unless Noted As Noted None

PAINT: None Galv. After Fab. As Noted

SPECIAL PAINT: NONE - CLEAN FOR WEATHERING #

SPECIAL CLEANING: Blast Clean SSPC SP10 * None

ITEM NO. 506.55 BR. NO. 6 PROJ. NO. BRO 1443(32)

TITLE: GIRDER DETAILS - G3

APPROVED: *national eastern*
 PRINT DIST. 6 3/25/03 APPR. FAB. PLAINVILLE, CT 860-747-3700

JOB: CL 2 LOCAL BRIDGE NO. 6
 RTE. TH 6 OVER THE POULTNEY RIVER
 RUTLAND COUNTY
 FAIRHAVEN, VERMONT - HAMPTON, NEW YORK

CUSTOMER: AUSTIN CONSTRUCTION, INC.

DESIGNER: VERMONT AGENCY OF TRANSPORTATION

CHECKED DS/NEC 3/24/03 DRAWN RAB/NEC 3/18/03

WORK ORDER NO. 15948 DRAWING NO. 10-5 REV.