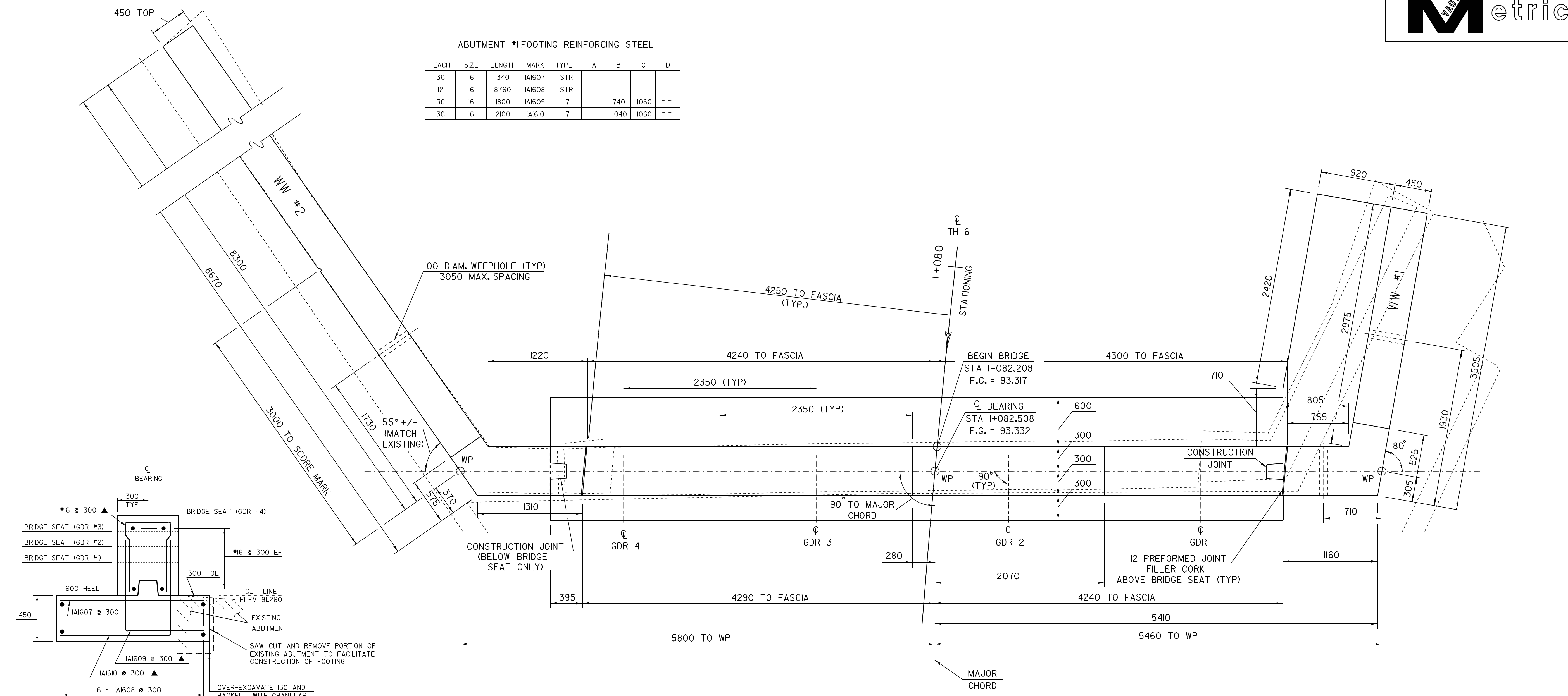


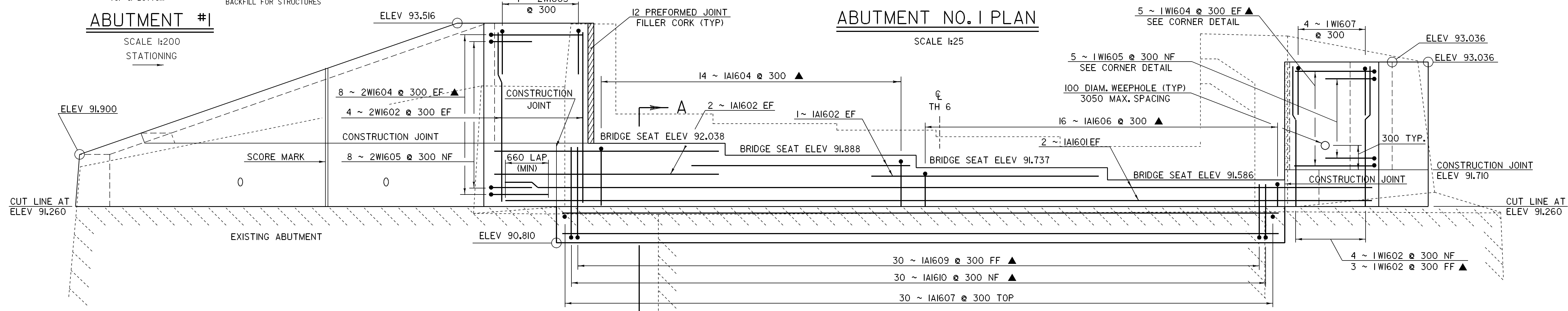
ABUTMENT #1 FOOTING REINFORCING STEEL

EACH	SIZE	LENGTH	MARK	TYPE	A	B	C	D
30	16	1340	IA1607	STR				
12	16	8760	IA1608	STR				
30	16	1800	IA1609	I7	740	1060	--	
30	16	2100	IA1610	I7	1040	1060	--	



ABUTMENT #1

SCALE 1:200  
STATIONING



ABUTMENT NO. 1 ELEVATION

SCALE 1:25

- NOTE:**
- NF = NEAR FACE
  - FF = FAR FACE
  - EF = EACH FACE
  - ▲ = CUT TO FIT IN FIELD
  - 80 CLEAR UNLESS OTHERWISE SPECIFIED ON THE PLANS
  - \*\* DRILL & GROUT DOWELS AS SHOWN. 450 MINIMUM DEPTH OF GROUTING
  - 3000 MAX. WEEPHOLE SPACING
  - REMOVAL OF CONCRETE ABOVE CUTLINE PAID AS "REMOVAL OF CONCRETE OR MASONRY"
  - ALL LAPS 660 UNLESS NOTED

SHEET NAME:	<b>ABUTMENT NO. 1</b>		
PROJECT NAME:	FAIR HAVEN-HAMPTON	HIGHWAY NO.:	TH 6
PROJECT NUMBER:	BRO 1443(32)	BRIDGE NO.:	6
		OVER:	POULTNEY RIVER
FILE NAME:	/str/1/93j021/sj021sub2.dgn	PLOT DATE:	29-MAR-2005
PROJECT MANAGER:	G.S. ROGERS	DRAWN BY:	D.BONNEAU
DESIGNED BY:	C.MEUNIER	IPARM NAME:	sj021abl1
BRIDGE SHEET NUMBER:		SHEET	25 OF 53