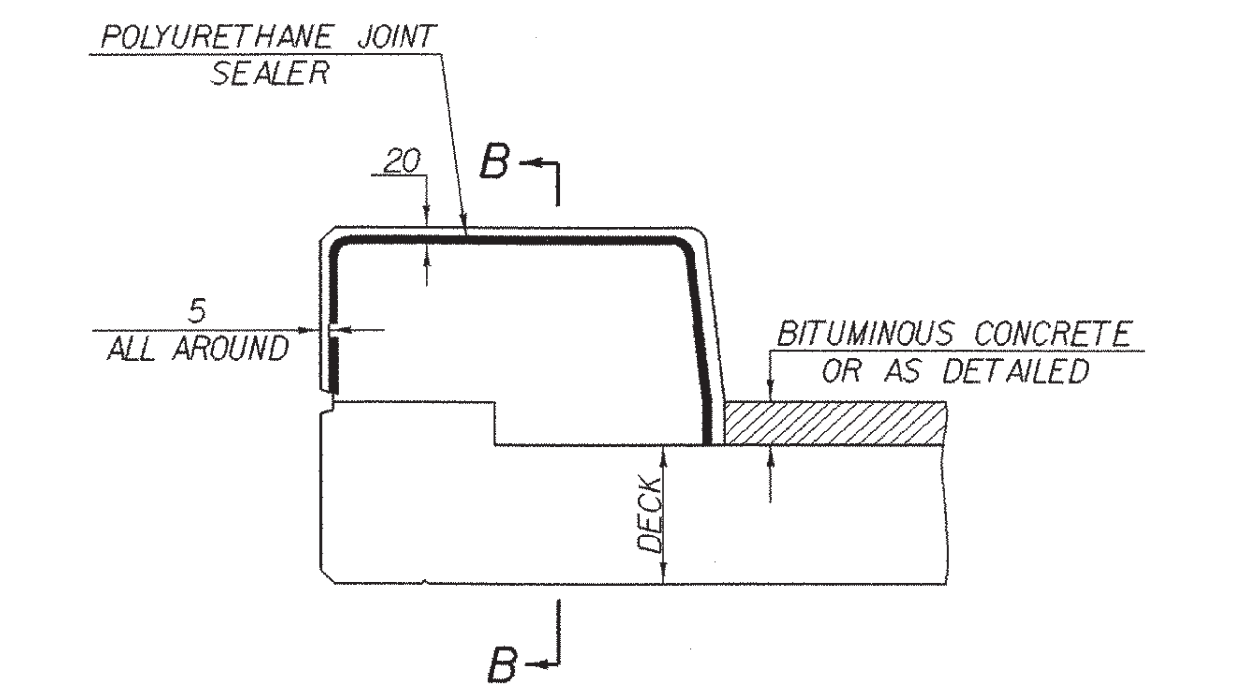
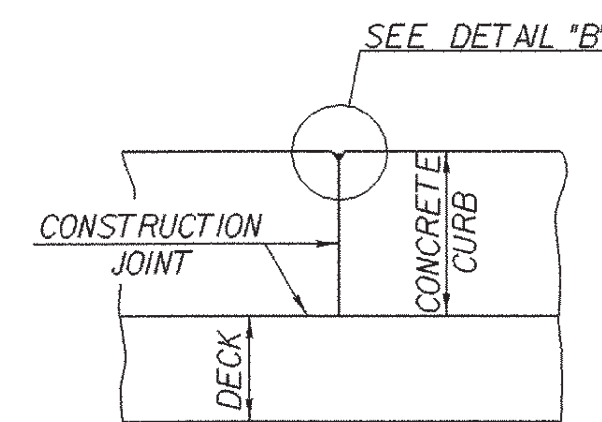


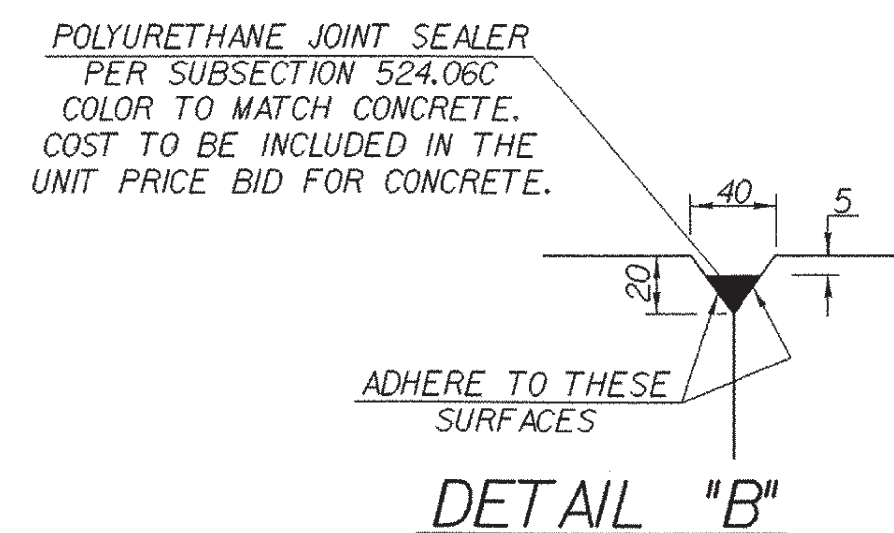
**ASPHALTIC PLUG-TYPE JOINT DETAIL**  
NTS



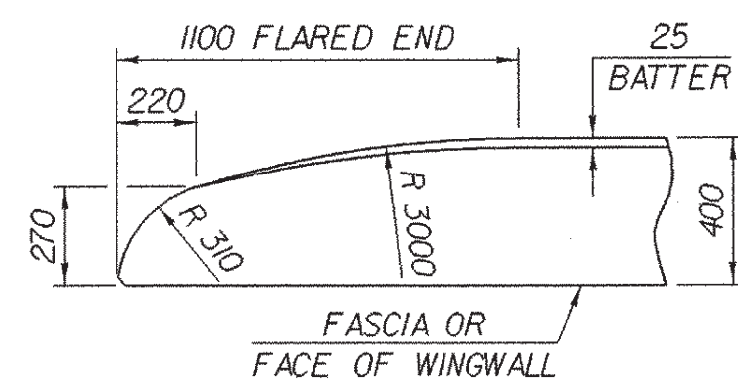
**TYPICAL SECTION THROUGH CONCRETE CURB CONSTRUCTION JOINT**



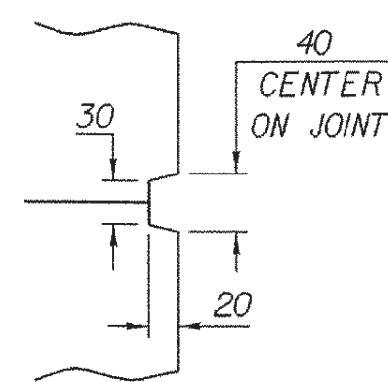
**SECTION B - B**



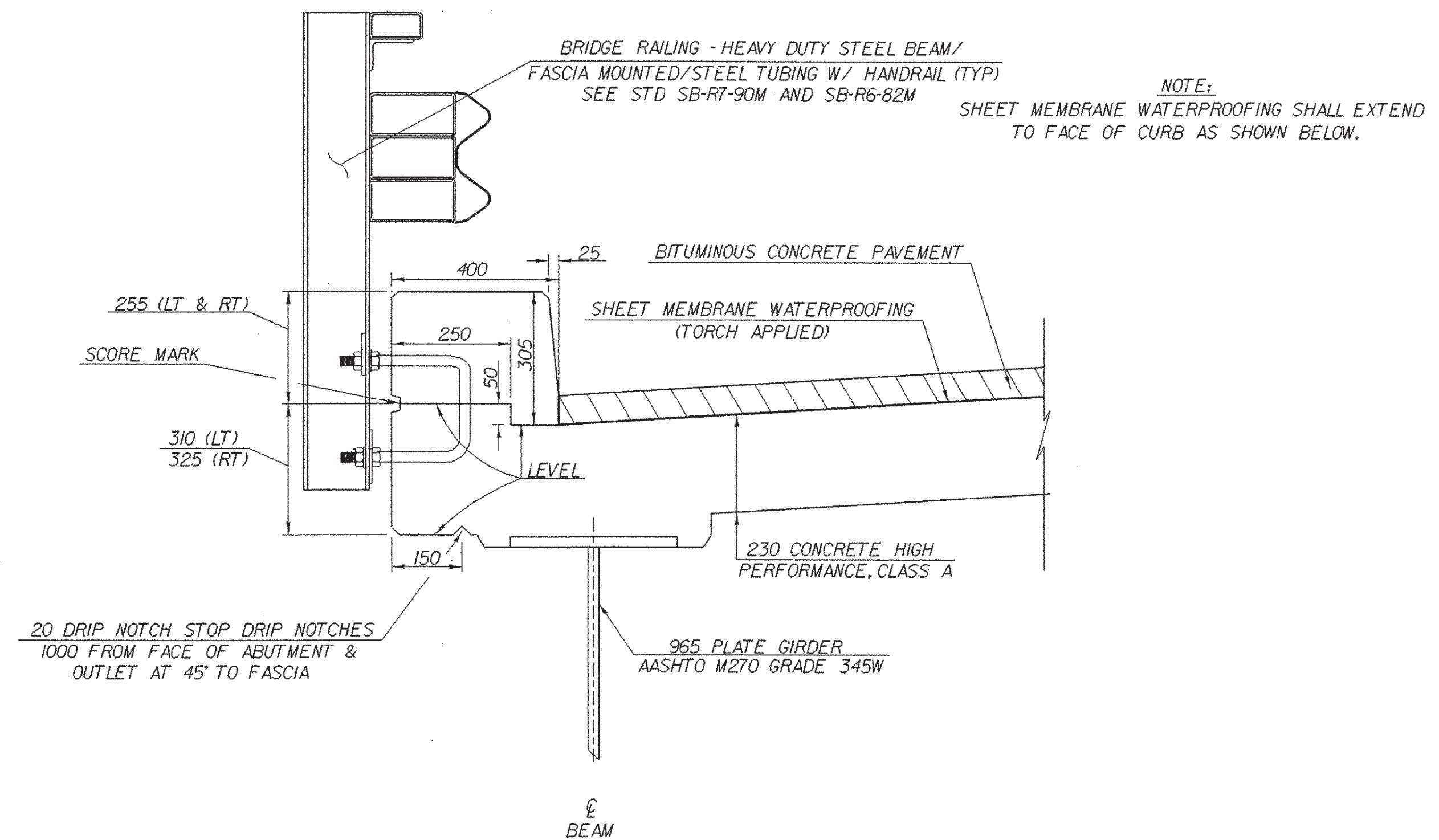
**DETAIL "B"**



**FLARED END FOR 400 CURB**  
BARS SHALL BE TURNED AS REQUIRED TO FIT FLARED ENDS



**SCORE MARK DETAIL**

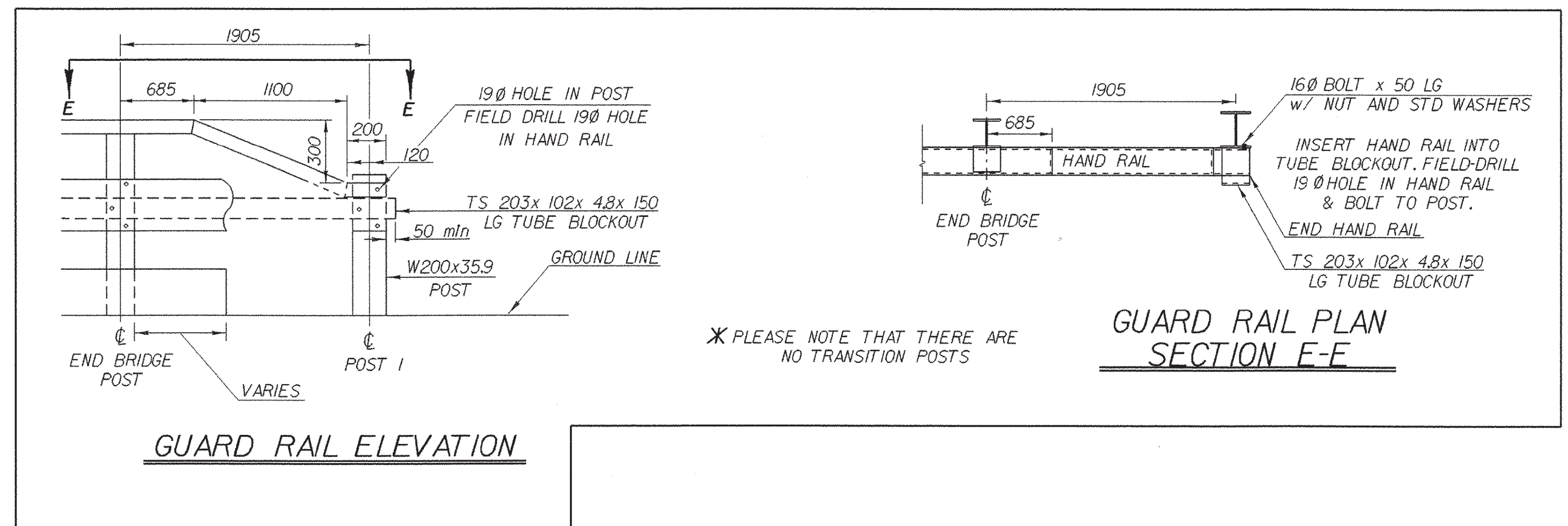


**400 CURB SECTION - LEFT FASCIA**

SCALE: 1/10

**NOTES**

1. POLYURETHANE MEMBRANE AND BLAST CLEANING SHALL BE INCLUDED IN THE UNIT PRICE BID FOR SHEET MEMBRANE WATERPROOFING.
2. CONSTRUCTION JOINTS THROUGH CONCRETE CURBS SHALL BE SPACED A MAXIMUM 6000 CENTER TO CENTER AND SHALL BE 450 MINIMUM FROM THE CENTER OF THE NEAREST BRIDGE RAIL POST. CONCRETE SHALL BE PLACED IN ALTERNATING SECTIONS WITH A MINIMUM OF 48 HOURS DELAY BETWEEN ADJACENT POURS.
3. LONGITUDINAL REINFORCING SHALL PASS THROUGH CONCRETE CURB CONSTRUCTION JOINTS.
4. CURB REINFORCING STIRRUP BARS SHALL BE TURNED AS REQUIRED TO FIT TAPERED ENDS.



**GUARD RAIL ELEVATION**

**GUARD RAIL PLAN SECTION E-E**

**HANDRAIL TO GUARDRAIL POST CONNECTION DETAILS**

(NTS)

SHEET NAME: CURB DETAILS	
PROJECT NAME: FAIR HAVEN-HAMPTON	HIGHWAY NO.: TH 6
PROJECT NUMBER: BRO 1443(32)	BRIDGE NO.: 6
	OVER: POULTNEY RIVER
FILE NAME: /str1/93j021/sj021sup2.dgn	PLOT DATE: 28-JAN-2003
PROJECT MANAGER: G.S. ROGERS	DRAWN BY: J. GILMORE
DESIGNED BY: C. MEUNIER	IPARM NAME: sj021crb.i
BRIDGE SHEET NUMBER:	SHEET 23 OF 53