

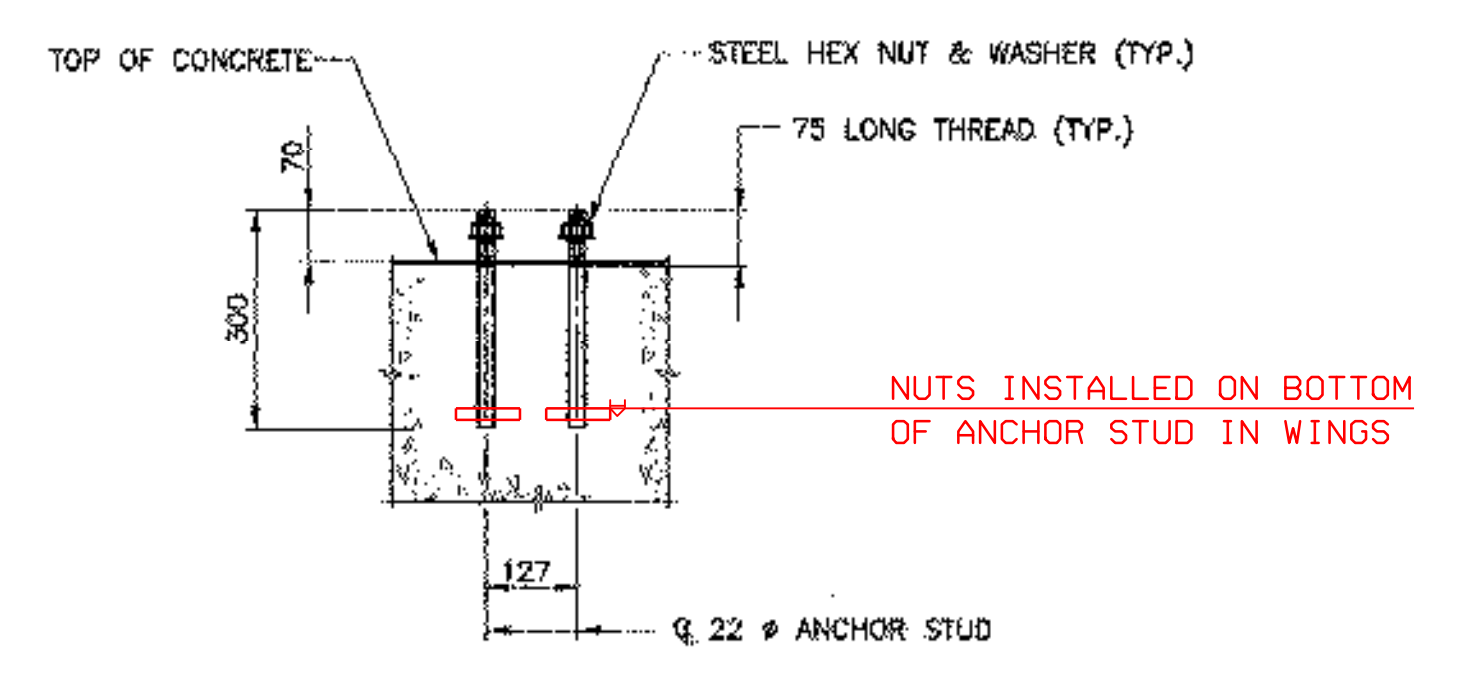
NOTES:

FOR BRIDGE RAIL AT WINGWALL, SEE TOP OF WINGWALL DETAIL, SHEET 16

SEE GENERAL NOTE NO. 27.

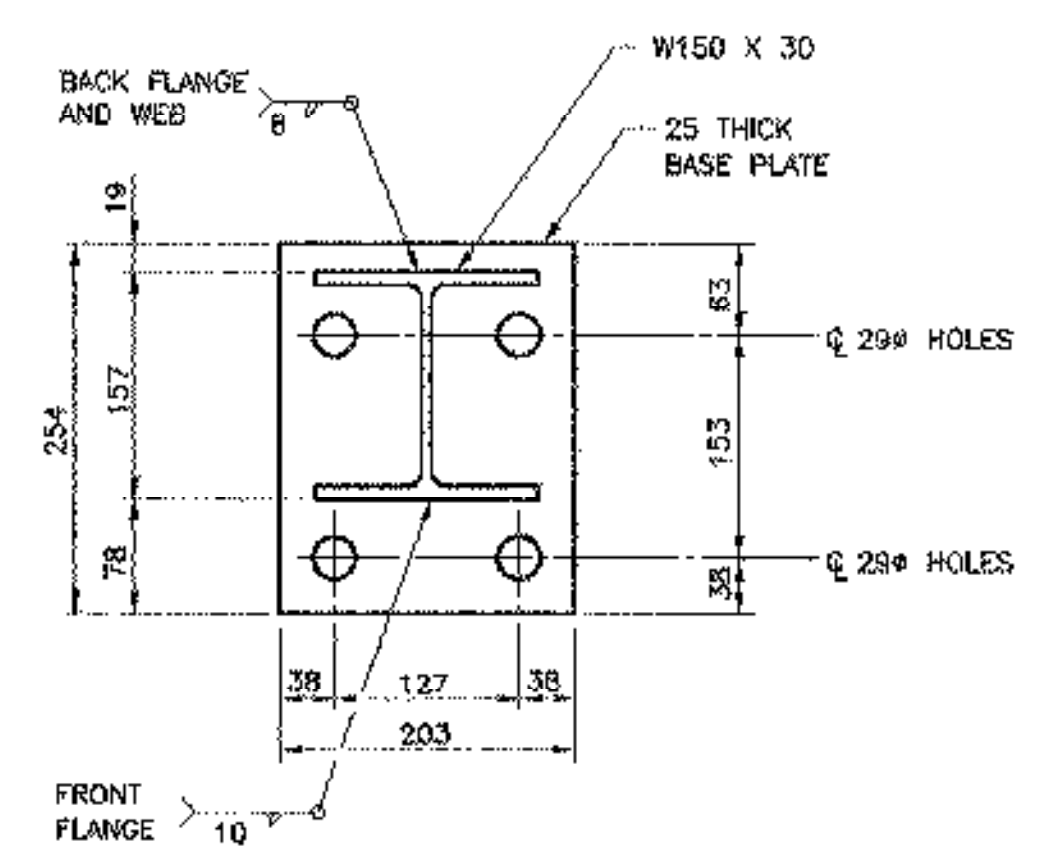
BRIDGE RAIL @ HEADWALL

SCALE: 1 : 10



POST ANCHOR ASSEMBLY

SCALE: 1 : 10



BASE PLATE DETAIL

SCALE: 1 : 5

NOTES:

- SEE STANDARD DRAWING 98-R7-90M FOR STANDARD DETAILS AND REQUIREMENTS NOT SHOWN HERE.
- BRIDGE RAIL (ITEM 525.44), SHALL INCLUDE POSTS, BASE PLATES, ANCHOR BOLTS, PREFORMED PADS, RAIL ASSEMBLY, BOLTS, NUTS, WASHERS, HEAVY DUTY STEEL BEAM (HDSB), TUBING, ETC. ITEM 525.44 SHALL MEET THE REQUIREMENTS OF SECTION 525 OF VDOT STANDARD SPECIFICATIONS, EXCEPT AS NOTED BELOW.
- BASE PLATES SHALL CONFORM TO AASHTO M 270/M 270M GRADE 345 AND SHALL BE GALVANIZED AFTER FABRICATION IN ACCORDANCE WITH AASHTO M 111.
- ANCHOR BOLTS, NUTS AND WASHERS SHALL CONFORM TO ASTM A449 AND SHALL BE GALVANIZED IN ACCORDANCE WITH AASHTO M 232.
- ANCHOR BOLTS SHALL BE CAST INTO THE CURB OR HEADWALL, AND SHALL CONFORM WITH THE REQUIREMENTS OF VDOT STANDARD SPECIFICATION SUBSECTION 714.07, EXCEPT AS NOTED IN NOTE 4 ABOVE.
- HOLES IN BASE PLATES SHALL BE FILLED FLUSH WITH POLYURETHANE JOINT SEALER AFTER RAIL INSTALLATION. (SUBSIDIARY TO ITEM 525.44).
- EACH PIECE OF RAIL SHALL BE ATTACHED TO A MINIMUM OF THREE POSTS.
- FABRIC PADS SHALL CONFORM TO AASHTO M251 AND SUBSECTION 731.01 OF VDOT STANDARD SPECIFICATIONS.
- NUTS FOR THREADED ANCHOR BOLTS CONNECTING THE BASE PLATE TO THE CONCRETE SHALL BE TIGHTENED TO A SNUG FIT AND GIVEN AN ADDITIONAL 1/8 OF A TURN.
- FOR BRIDGE RAIL POST SPACING, SEE GENERAL PLAN & ELEVATION ON SHEET 11.

PLOT SCALE 1 = 10

ARCHIVED ON CADD

Hayashi Corporation
Consulting Engineers

22 Manchester Road
Derry, NH 03038

Phone: (603) 425-2647
Fax: (603) 425-2775

DuBois & King inc.

engineering planning management development

REVISIONS		
NO.	DESCRIPTION	BY & DATE

STATE OF VERMONT
AGENCY OF TRANSPORTATION

CLARENDON, VERMONT	Bridge No. 25
TOWN HIGHWAY NO. 10	Log Sta.
TOWN HIGHWAY NO. 10 OVER THE CLARENDON RIVER	
BRIDGE RAIL SHEET	
Designed by: K.L. JAMES	Drawn by: N.J. HOYT
Checked by: M.H. GALLO date 6/15/00	Bridge Design Supervisor J.W. TUCKER date
VAOT PROJECT NO. BRO 1443(27)	DK PROJECT NO. R13567F5
Bridge Sheet No.	SHEET 20 of 25