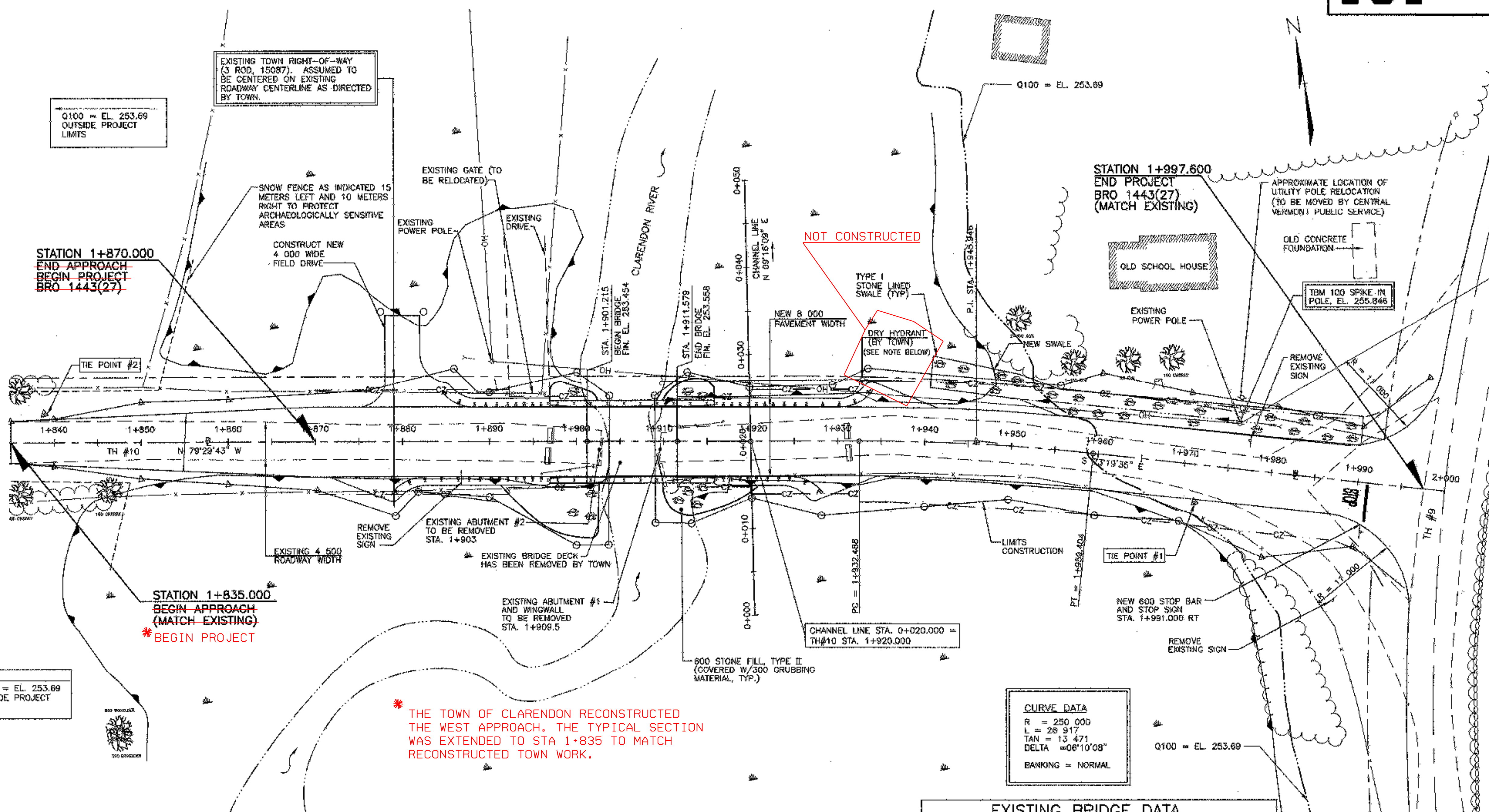


LEGEND

- DECIDUOUS TREE
- STUMP
- TREE LINE
- GRAVEL ROAD
- ROADWAY CENTERLINE
- JERSEY BARRIER
- BUILDINGS
- UTILITY POLE
- GUY WIRE
- SIGN
- R.O.W.
- FENCE
- SURVEY CONTROL POINT
- OVERHEAD POWER
- NEW BRIDGE DECK
- EDGE OF RIVER
- WETLAND
- LIMIT OF CUT
- LIMIT OF FILL
- CLEAR ZONE
- SNOW FENCE



STATION 1+870.000
END APPROACH
BEGIN PROJECT
BRO 1443(27)

STATION 1+835.000
BEGIN APPROACH
(MATCH EXISTING)
* BEGIN PROJECT

NOT CONSTRUCTED

* THE TOWN OF CLARENDON RECONSTRUCTED THE WEST APPROACH. THE TYPICAL SECTION WAS EXTENDED TO STA 1+835 TO MATCH RECONSTRUCTED TOWN WORK.

CURVE DATA

R = 250.000
L = 26.917
TAN = 13.471
DELTA = 06°10'08"
BANKING = NORMAL

EXISTING BRIDGE DATA

COMPONENT	LENGTH	HEIGHT	THICKNESS	CONSTRUCTION
SUPERSTRUCTURE	REMOVED			
ABUTMENT NO. 1 AND WINGWALL	6.200	2.000	500	CONCRETE
ABUTMENT NO. 2	4.000	2.000	600	LAD-UP STONE WITH CONCRETE CAP

LAYOUT PLAN
SCALE: 1:250

HEAVY DUTY STEEL BEAM GUARDRAIL

STA. 1+876.811 RT to 1+895.923 RT
STA. 1+884.472 LT to 1+895.923 LT
STA. 1+916.873 RT to 1+928.240 RT
STA. 1+916.873 LT to 1+933.910 LT

GUARDRAIL ANCHORS

STA. 1+880.811 RT
STA. 1+886.650 LT
STA. 1+926.240 RT
STA. 1+931.910 LT

REMOVE AND RESET FENCE

STA. 1+870.0 LT to 1+892.0 LT (ELECTRIC AND BARBED WIRE)
STA. 1+870.0 RT to 1+902.0 RT (ELECTRIC)
STA. 1+913.0 RT to 1+980.0 RT (ELECTRIC)
STA. 1+895.0 LT to STA. 1+880.0 LT (MOVE FIELD GATE)

**BRIDGE RAILING
HEAVY DUTY STEEL BEAM
W/FASCIA MOUNTED/STEEL TUBING (MOD.)**

STA. 1+895.923 RT to STA. 1+916.873 RT
STA. 1+895.923 LT to STA. 1+916.873 LT

BITUMINOUS CONCRETE PAVEMENT

STA. 1+855.000 TO STA. 1+997.600

100 mm YELLOW LINE

STA. 1+855.000 TO STA. 1+997.600

CONSTRUCT DRIVE

STA. 1+880.0 LT

NEW SWALE

STA. 1+940.0 LT to STA. 1+980.0 LT

REMOVING SIGNS

STA. 1+886.861 RT
STA. 1+977.197 LT
STA. 1+988.502 RT

600 STOP BAR

STA. 1+991.000 RT

LETTER OR SYMBOL

STA. 1+991.000 RT

TRAFFIC SIGNS, TYPE A

STA. 1+991.000 RT

NOTE:

- ALL DIMENSIONS AND ELEVATIONS ARE IN MILLIMETERS UNLESS OTHERWISE NOTED. ALL STATIONS ARE IN KILOMETERS.
- TOWN SHALL COORDINATE WITH SELECTED CONTRACTOR FOR PRICE AND INSTALLATION OF DRY HYDRANT.

THE TOWN DID NOT PURSUE THE CONSTRUCTION OF THIS HYDRANT.

REVISIONS

NO.	DESCRIPTION	BY & DATE

**STATE OF VERMONT
AGENCY OF TRANSPORTATION**

CLARENDON, VERMONT	Bridge No. 25
TOWN HIGHWAY NO. 10	Log Sta.
TOWN HIGHWAY NO. 10 OVER THE CLARENDON RIVER	
LAYOUT SHEET	
Designed by: W.S. CHESBROUGH	Drawn by: N.B. DIMICK
Checked by: K.S. MARSHIA	Bridge Design Supervisor: J.W. TUCKER
VAOT PROJECT NO. BRO 1443(27)	DK PROJECT NO. R1356755
Bridge Sheet No.	SHEET 7 of 25