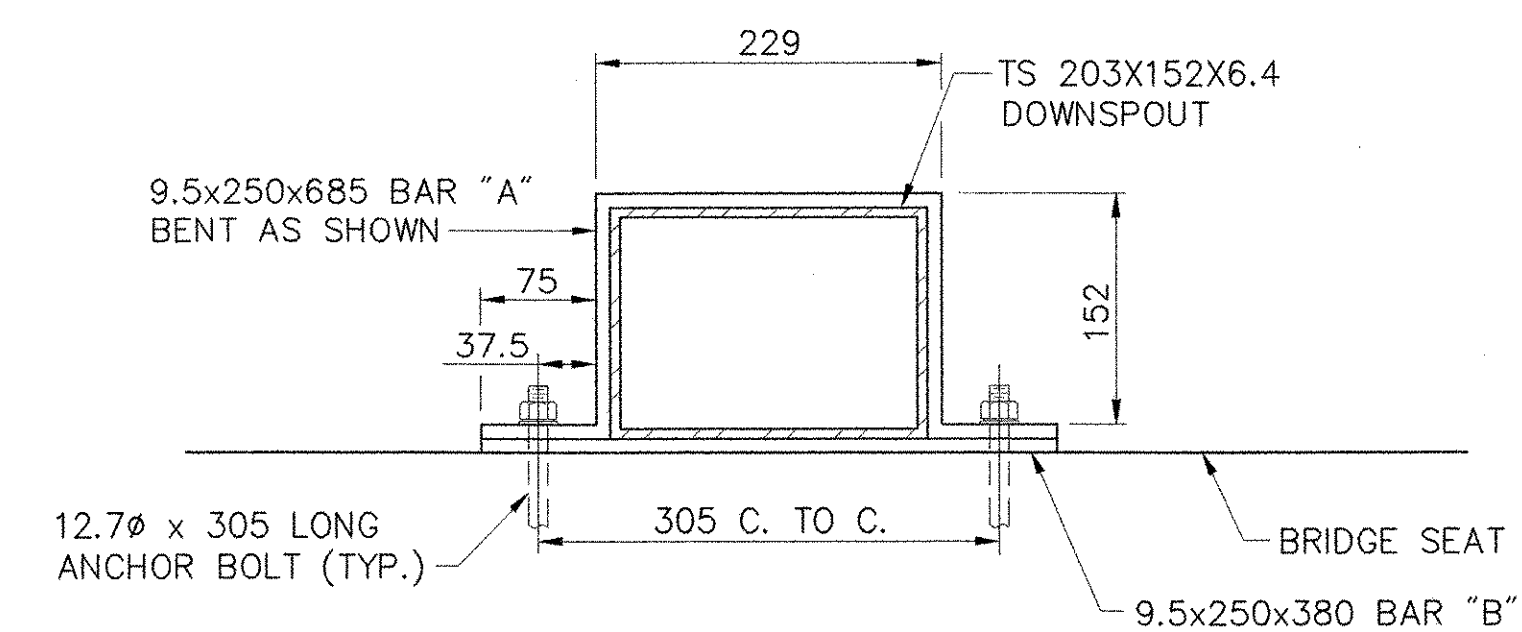
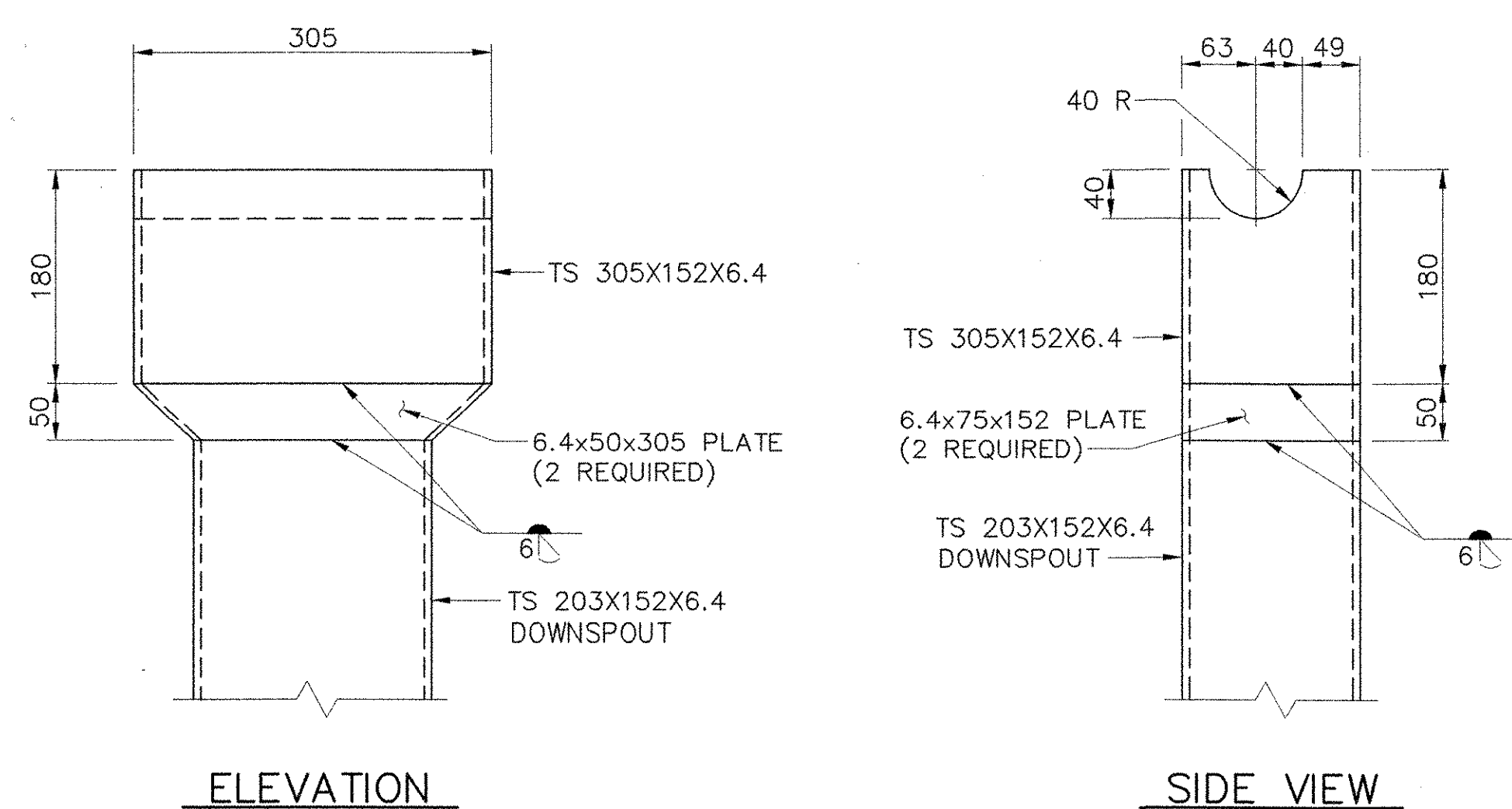


BAR DETAILS  
SCALE: 1:5



DOWNSPOUT TO ABUTMENT ATTACHMENT DETAIL  
SCALE: 1:5



HOPPER DETAIL  
SCALE: 1:5

DOWNSPOUTS NOTES:

- HOLLOW STRUCTURAL STEEL TUBING SHALL CONFORM TO ASTM A-500 GRADE B.
- ALL PLATES AND BARS SHALL CONFORM TO AASHTO M 270M/M 270 GRADE 250.
- DOWNSPOUT COMPONENTS AND ATTACHMENT ELEMENTS SHALL BE GALVANIZED IN ACCORDANCE WITH AASHTO M 111M/M 111 OR AASHTO M 232M/M 232 AFTER FABRICATION.
- DOWNSPOUT AND ATTACHMENT DETAILS SHALL CONFORM TO THE APPLICABLE PROVISIONS OF SECTION 506. THE COST FOR THE DOWNSPOUT AND ATTACHMENT ASSEMBLY SHALL BE INCIDENTAL TO THE EXPANSION JOINT ITEM.
- ALL REQUIRED WELDS SHALL BE DETAILED ON SHOP DRAWINGS WHICH SHALL ALSO INCLUDE ALL APPLICABLE WELDING PROCEDURES.
- DOWNSPOUT ASSEMBLY SHALL BE THOROUGHLY CLEANED AND FLUSHED AFTER CONCRETE AND PAVING OPERATIONS.

STATE OF VERMONT  
AGENCY OF TRANSPORTATION

Town Of	CAVENDISH	Bridge No.	45
Highway No.	TH 29	Log Sta.	
		Surv. Sta.	

TH 29 OVER BLACK RIVER

DOWNSPOUT DETAILS

Designed By	S.M. HODGDON	Drawn By	C.L. CILLEY
Checked By	M.M. LANDREY	Date	5/06
		Bridge Design Supervisor	C.D. BAKER Date 5/06

PROJECT	CAVENDISH	PROJECT NO.	BRO 1442(23)
---------	-----------	-------------	--------------

I.G.C. Info.	Bridge Sheet No. 50499EJDS	Sheet	24 of 47
--------------	----------------------------	-------	----------

VANASSE HANGEN BRUSTLIN, INC.