

CONSTRUCTION NOTES

REMOVAL AND DISPOSAL OF GUARD RAIL
STA. 10+087.9, LT 3.2 - 10+088.2, RT 23.1

REMOVE AND RESET MAILBOX
STA. 20+013.0, RT

HEAVY DUTY STEEL BEAM GUARD RAIL
STA. 20+008.9, LT - 20+035.4, LT
STA. 10+085.0, RT - 10+088.1, RT
STA. 10+084.2, LT - 10+084.2, LT

GUARD RAIL APPROACH SECTION, NETC 2 RAIL
STA. 10+033.6 - 10+040.4, LT
STA. 10+078.0 - 10+084.2, LT
STA. 20+008.9 - 10+040.5, RT
STA. 10+078.0 - 10+085.0, RT

BRIDGE RAILING - NETC 2 RAIL
STA. 10+040.4 - 10+078.0, LT
STA. 10+040.5 - 10+078.0, RT

ANCHOR FOR STEEL BEAM RAIL
STA. 10+035.5, LT
STA. 20+033.5, LT
STA. 10+086.2, RT
STA. 10+082.3, LT

TYPE I STONE FILL LINED DITCH
STA. 10+010.0, LT - 10+041.0, LT
STA. 20+008.0, RT - 20+030.0, RT
STA. 20+033.0, RT - 20+038.0, RT
STA. 40+050.0, LT - 40+085.0, LT

YIELDING MARKER POSTS
STA. 20+028, RT
STA. 20+037, LT & RT
STA. 40+075, LT, LT

DRAINAGE NOTES

- ① STA. 10+083.5, RT 2.2 - VT 131 REMOVE EXISTING 300x15 M CMP
- ② STA. 40+075.0, LT INSTALL NEW 450x17.0 M PCCSP OR CAAP OR RCP OR CPEP. OUTLET TO PROPOSED TYPE IV STONE FILL
- ③ STA. 20+028.0, RT INSTALL RCDDI GRATE TYPE A
- ④ STA. 20+028.0, RT-20+037.0, RT INSTALL NEW 450x9 M CSP OR CAAP OR CPEP
- ⑤ STA. 20+036.0, RT- LT REMOVE EXISTING 300x8 M CMP
- ⑥ STA. 20+037.0, RT INSTALL RCDDI GRATE TYPE A
- ⑦ STA. 20+037.0, RT-LT INSTALL NEW 450x10.8 M CSP OR CAAP OR CPEP. STONE FILL PAD 1800x900x300 DEEP AT OUTLET

CURVE 2 INFO
Δ = 36°-33'-18"
R = 50,000 m
T = 16,514 m
L = 31,900 m
E = 2,657 m
NO BANKING

TO BE REMOVED BY OTHERS (TYP.)
NEW POLE, GUY AND OHW BY OTHERS (TYP.)

M.L. P.O.S.T.
STA. 10+032.000
STA. 20+000.000
Δ = 86°-35'-00" RT.

CURVE 3 INFO
Δ = 03°-40'-00"
R = 175,000 m
T = 5,602 m
L = 11,199 m
E = 0,090 m
NO BANKING

NEW POLE AND OHW BY OTHERS (TYP.)
TO BE REMOVED BY OTHERS (TYP.)

BEGIN R.O.W. PROJECT BRO 1442 (23)
10+017.3 10M (19.7') LT.

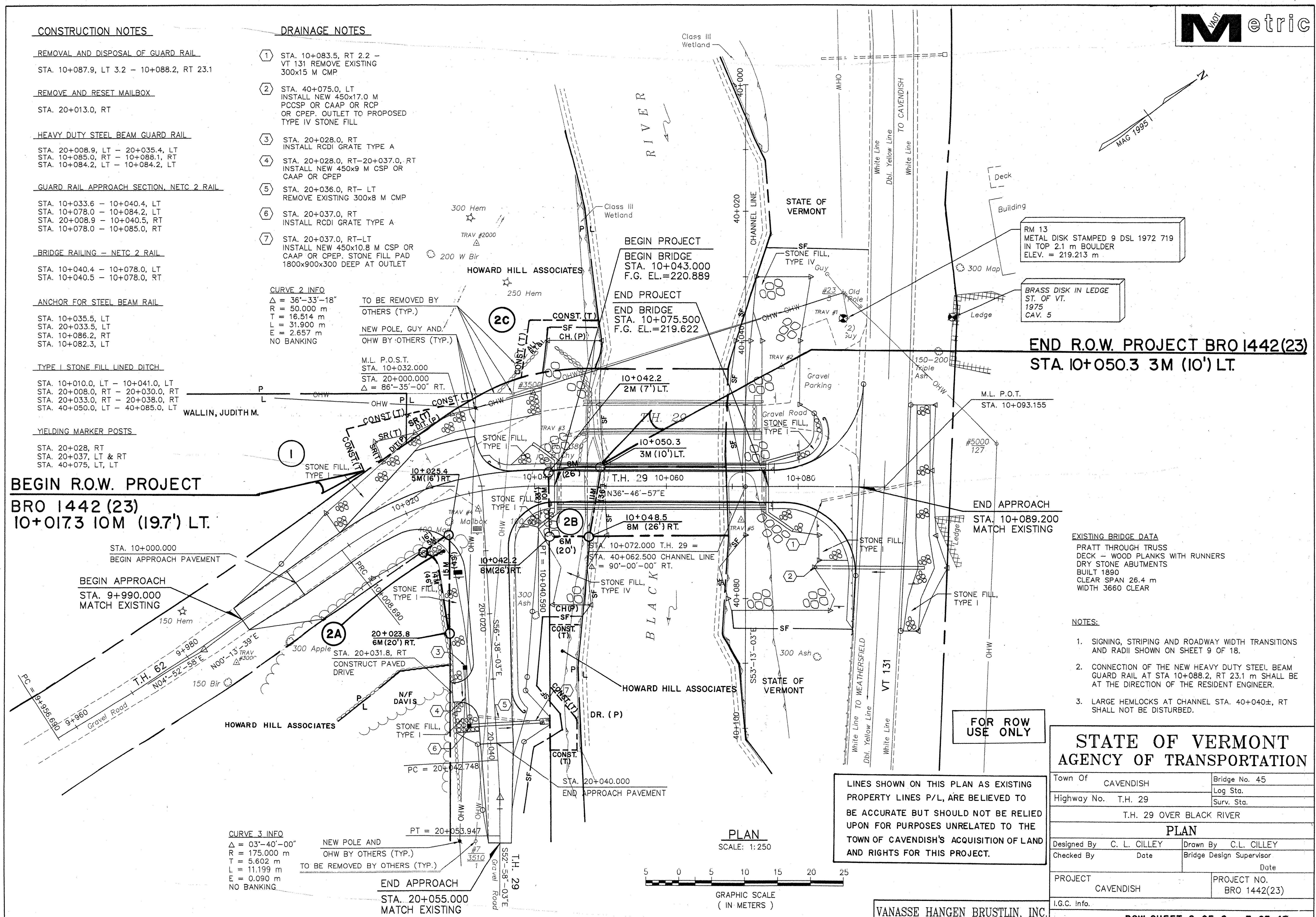
END R.O.W. PROJECT BRO 1442(23)
STA. 10+050.3 3M (10') LT.

STA. 10+000.000
BEGIN APPROACH PAVEMENT
BEGIN APPROACH
STA. 9+990.000
MATCH EXISTING

END APPROACH
STA. 10+089.200
MATCH EXISTING

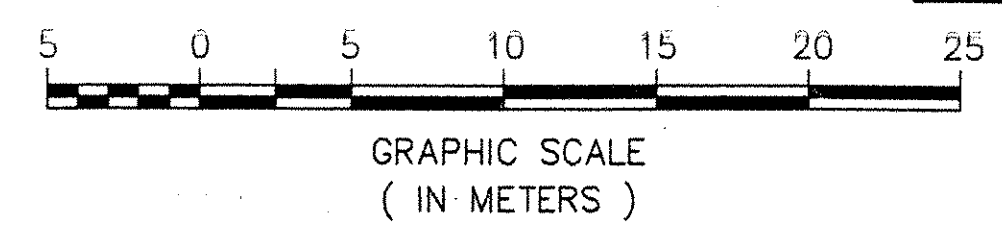
EXISTING BRIDGE DATA
PRATT THROUGH TRUSS
DECK - WOOD PLANKS WITH RUNNERS
DRY STONE ABUTMENTS
BUILT 1890
CLEAR SPAN 26.4 m
WIDTH 3660 CLEAR

- NOTES:**
- SIGNING, STRIPING AND ROADWAY WIDTH TRANSITIONS AND RADII SHOWN ON SHEET 9 OF 18.
 - CONNECTION OF THE NEW HEAVY DUTY STEEL BEAM GUARD RAIL AT STA 10+088.2, RT 23.1 m SHALL BE AT THE DIRECTION OF THE RESIDENT ENGINEER.
 - LARGE HEMLOCKS AT CHANNEL STA. 40+040±, RT SHALL NOT BE DISTURBED.



LINES SHOWN ON THIS PLAN AS EXISTING PROPERTY LINES P/L, ARE BELIEVED TO BE ACCURATE BUT SHOULD NOT BE RELIED UPON FOR PURPOSES UNRELATED TO THE TOWN OF CAVENDISH'S ACQUISITION OF LAND AND RIGHTS FOR THIS PROJECT.

PLAN
SCALE: 1:250



FOR ROW USE ONLY

STATE OF VERMONT AGENCY OF TRANSPORTATION

Town Of	CAVENDISH	Bridge No.	45
Highway No.	T.H. 29	Log Sta.	
		Surv. Sta.	
T.H. 29 OVER BLACK RIVER			
PLAN			
Designed By	C. L. CILLEY	Drawn By	C.L. CILLEY
Checked By	Date	Bridge Design Supervisor	Date
PROJECT	CAVENDISH	PROJECT NO.	BRO 1442(23)
I.G.C. Info.			

VANASSE HANGEN BRUSTLIN, INC.