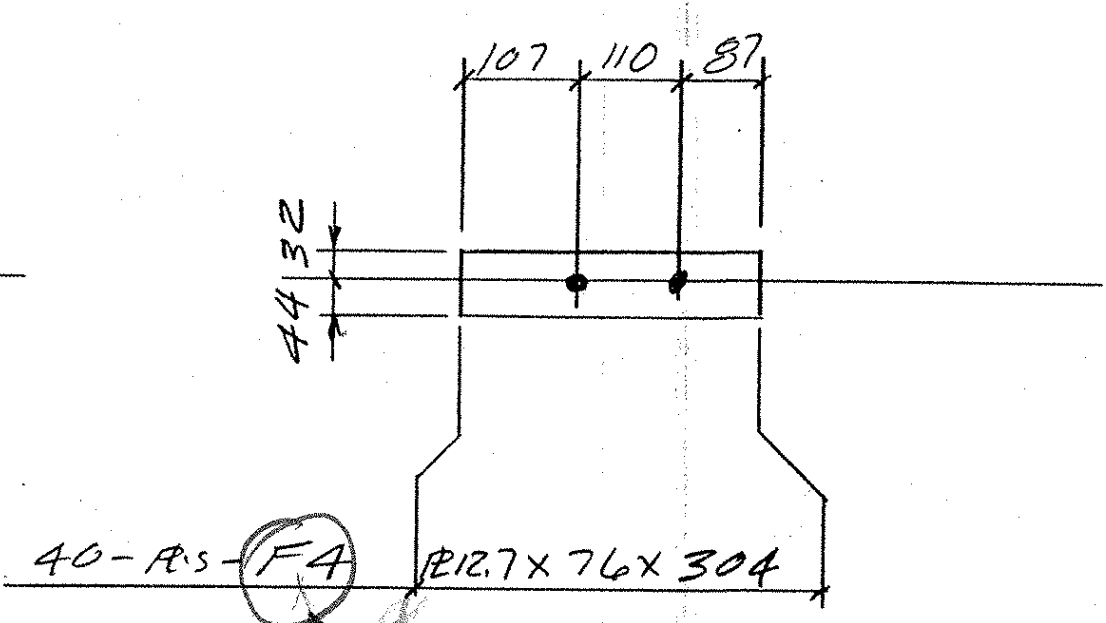
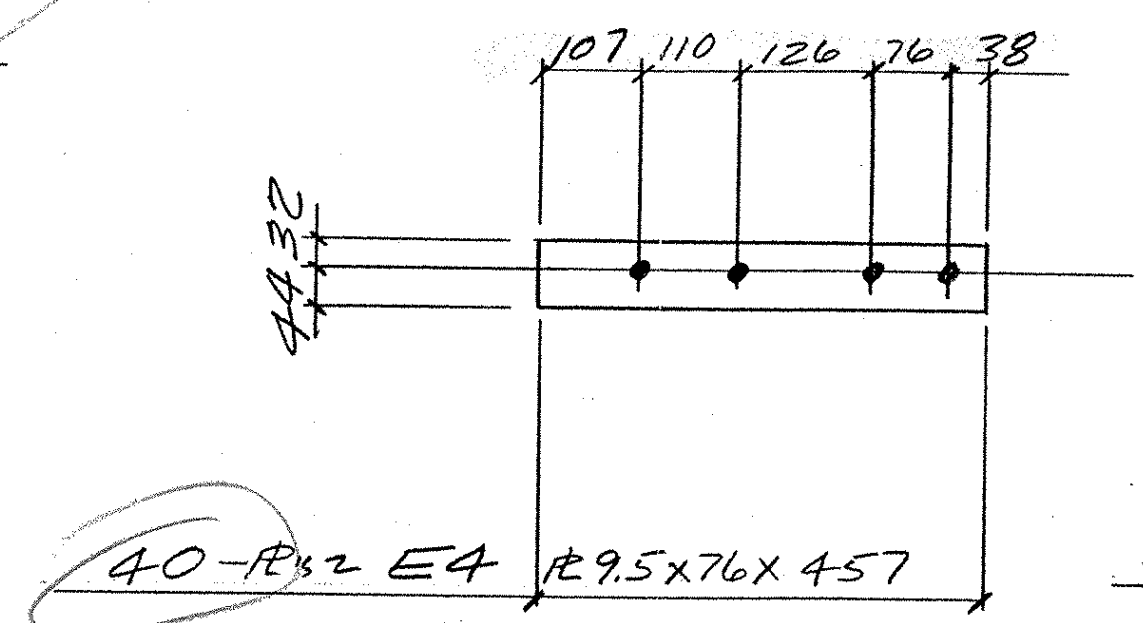
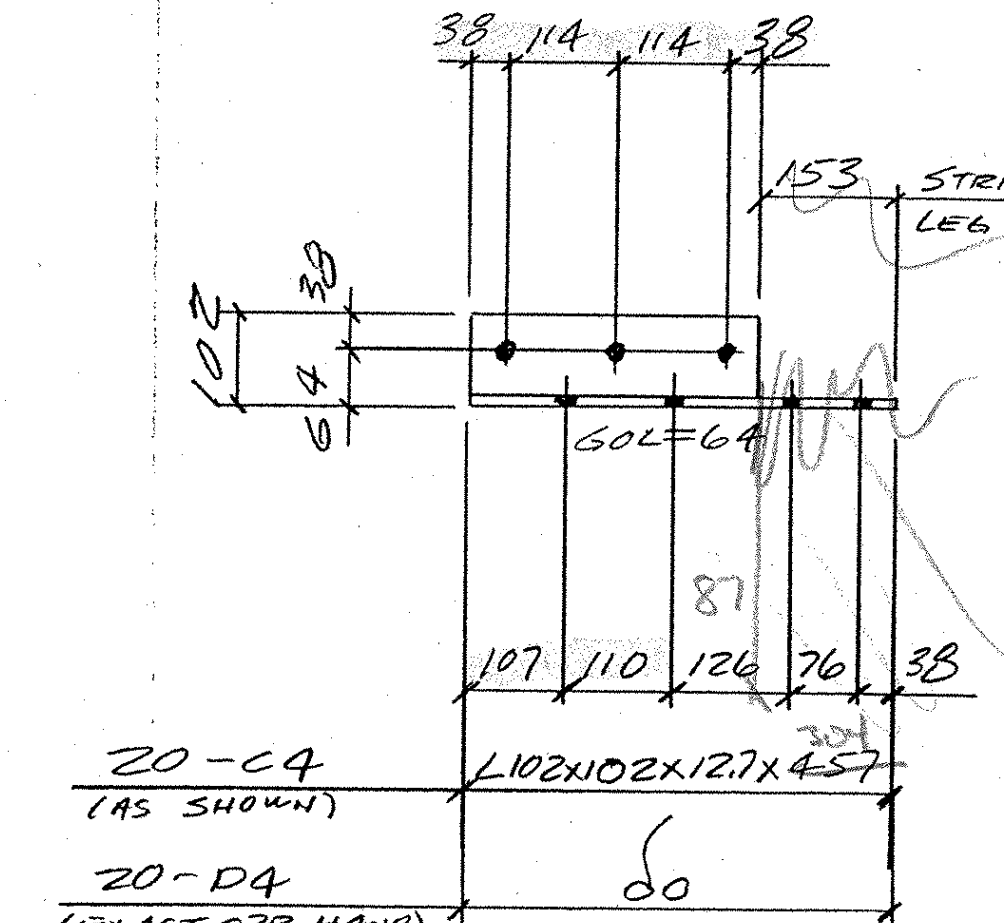
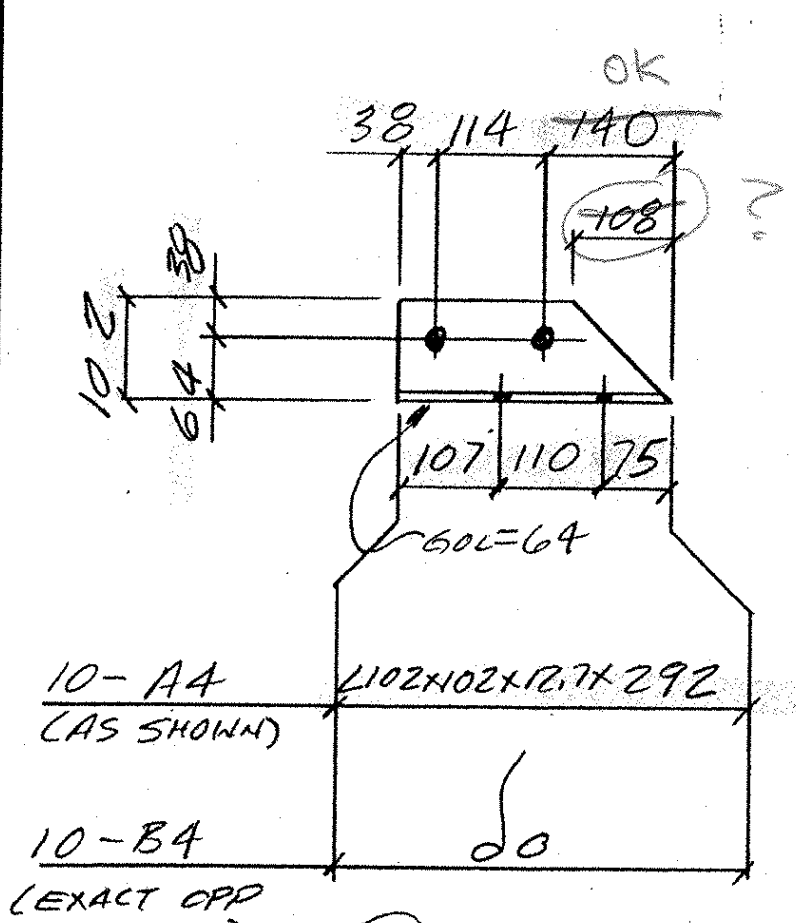
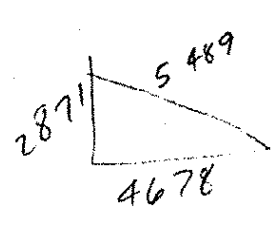
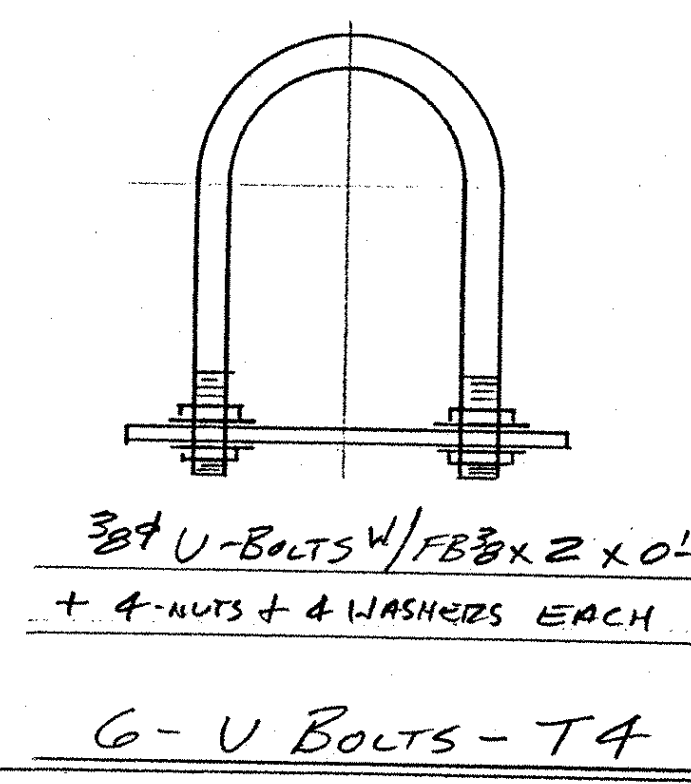
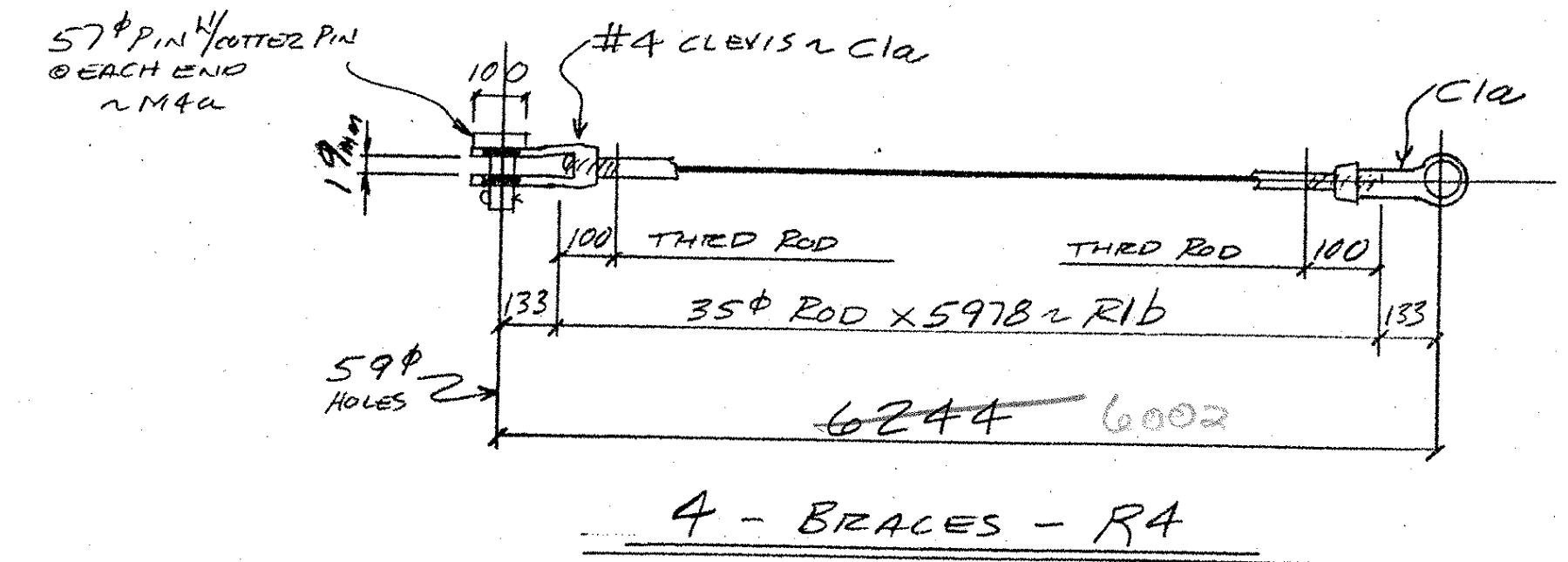
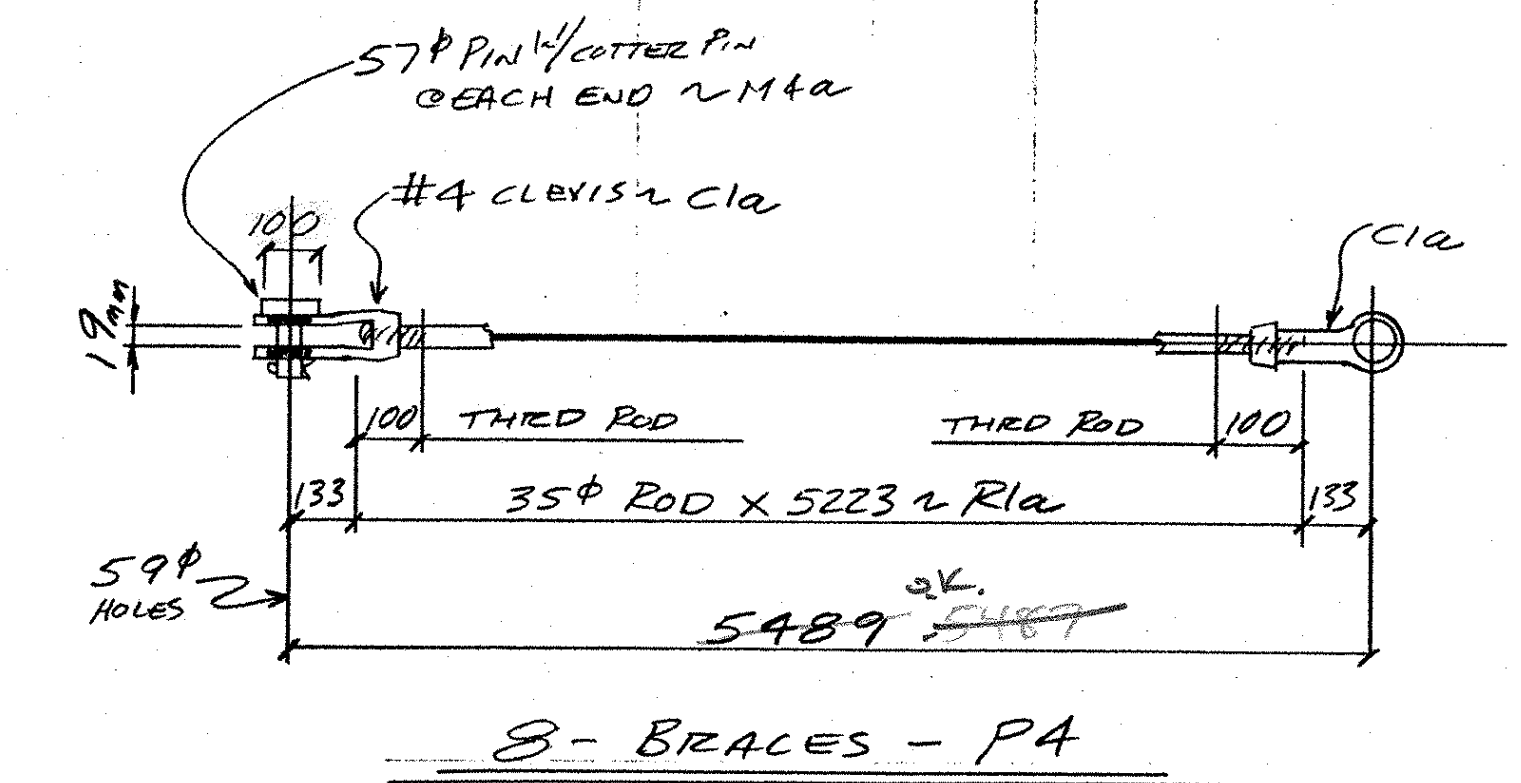
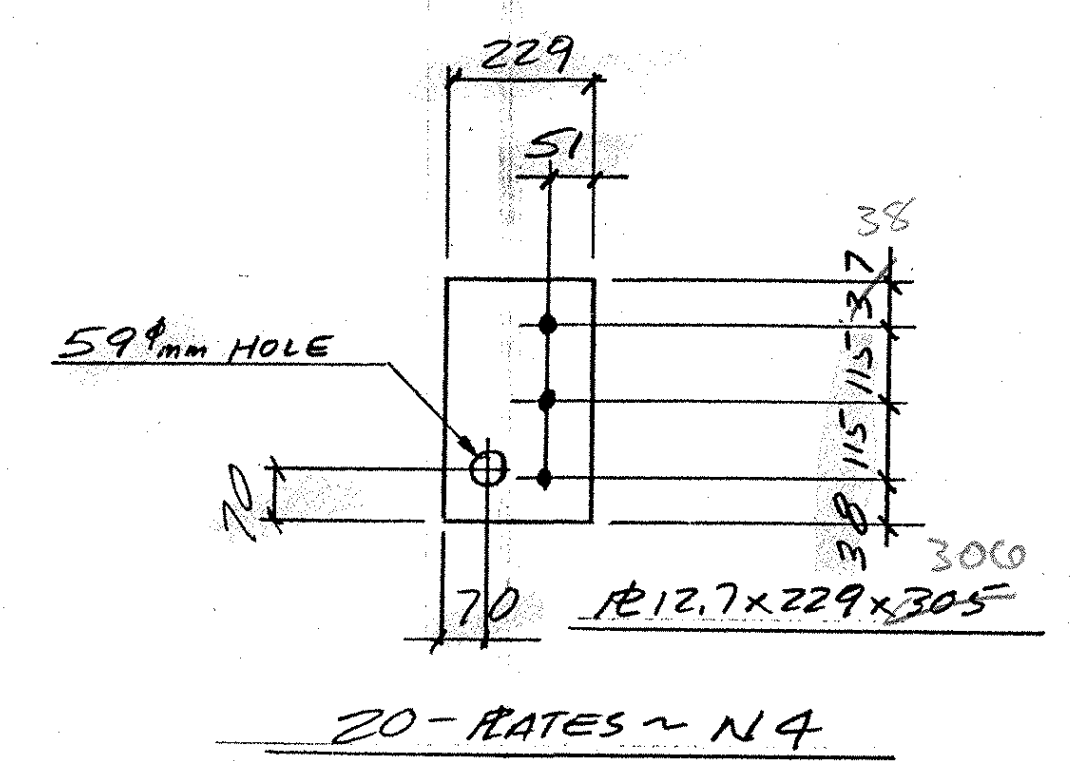
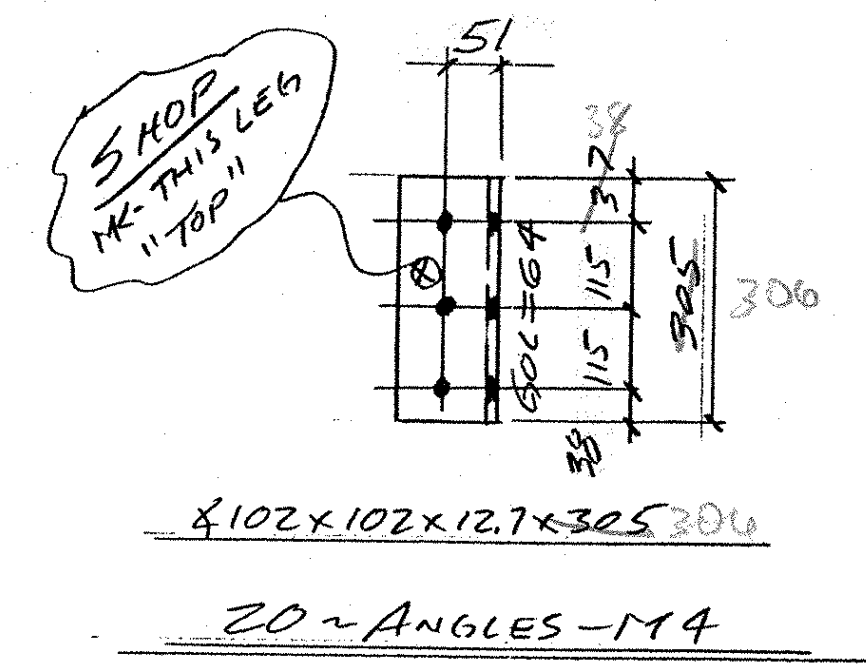
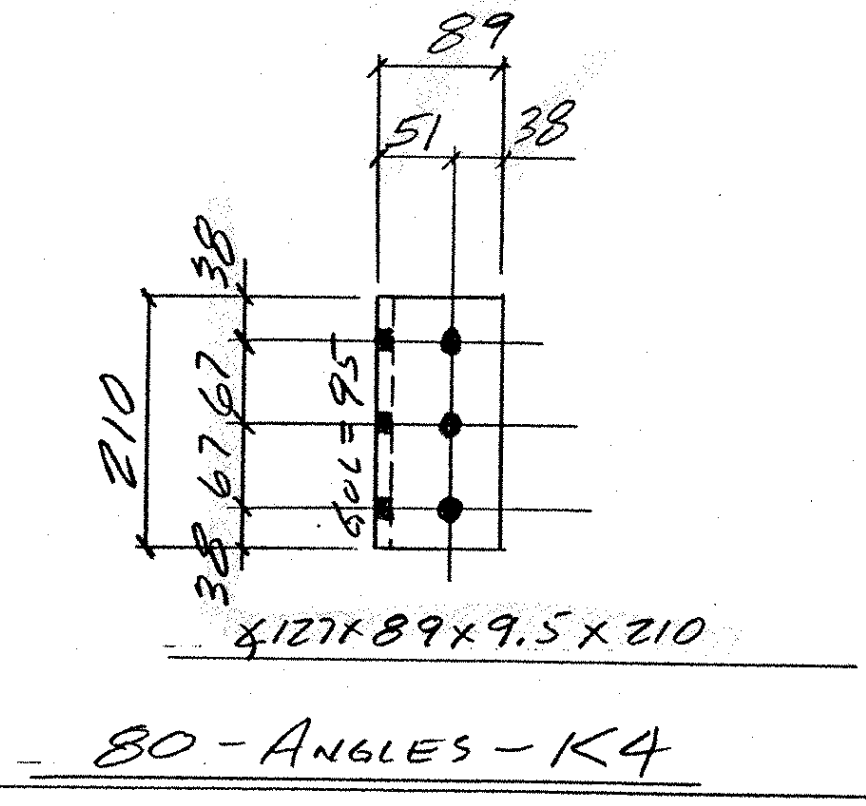
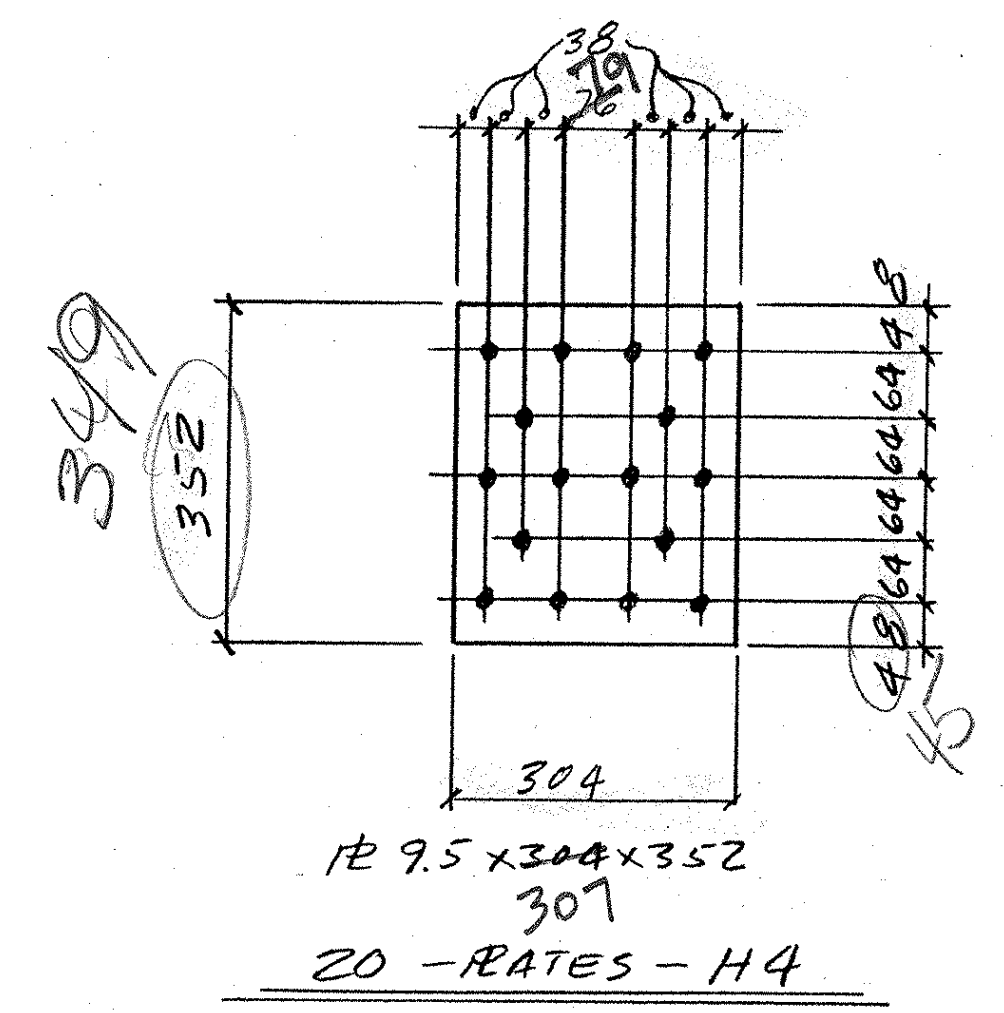


| ABM INFO |      | SHOP BILL |                            |                | JOB NO.       | DRG. NO.       |
|----------|------|-----------|----------------------------|----------------|---------------|----------------|
| PAGE     | LINE | NO.       | DESCRIPTION                | QTY            | REMARKS       | WEIGHT         |
|          | 10   |           | L102x102x12.7              | 292            | A4            |                |
|          | 10   |           | do                         | 292            | B4            |                |
|          | 20   |           | do                         | 457            | C4            |                |
|          | 20   |           | do                         | 457            | D4            |                |
|          | 40   |           | R9.5x76                    | 457            | E4            |                |
|          | 40   |           | <del>R12.7x76</del>        | <del>304</del> | <del>F4</del> |                |
|          | 20   |           | R9.5x304                   | 352            | H4            |                |
|          | 20   |           | L127x89x9.5                | 210            | K4            |                |
|          | 20   |           | L102x102x12.7              | 305            | M4            |                |
|          | 20   |           | R1512.7x229                | 305            | N4            |                |
|          | 8    |           | BRACES                     |                | P4            |                |
|          | 8    |           | 35# ROD                    | 5223           | R1a           |                |
|          | 16   |           | #4 CLEVIS                  |                | C1a           |                |
|          | 16   |           | 57# PINS                   |                | M4a           | 1/2 CUTTER PIN |
|          | 4    |           | BRACES                     |                | R4            |                |
|          | 4    |           | 35# ROD                    | 5978           | R1b           |                |
|          | 8    |           | #4 CLEVIS                  |                | C1a           |                |
|          | 8    |           | 57# PINS                   |                | M4a           |                |
|          | 6    |           | U-BOLTS                    |                | T4            |                |
|          |      |           | 30# U-BOLT                 |                |               |                |
|          |      |           | 1/2" x 2" x 0.8"           |                |               |                |
|          |      |           | 1/2" NUTS + 2 WASHERS EACH |                |               |                |



VERIFY QUANTITY IN FIELD

Don't need these



RECEIVED  
APR 27 2004

PLANS DRAWN USING  
METRIC  
DIMENSIONS

|  |         |     |     |     |      |     |      |     |      |        |
|--|---------|-----|-----|-----|------|-----|------|-----|------|--------|
| OUT FOR APPROVAL   | 4/23/04 |     |     |     |      |     |      |     |      |        |
| ISSUED TO SHOP   |         |     |     |     |      |     |      |     |      |        |
| FIELD & OFFICE   |         |     |     |     |      |     |      |     |      |        |
| REV. REMARKS   | DATE    | DWN | CHK | APP | Q.A. | NO. | DIA. | LGT | TYPE | WASHER |
| PROJECT NO. BHO 1442 (22)                                |         |     |     |     |      |     |      |     |      |        |
| STATE PROJECT NO. BHO 1442 (22)                          |         |     |     |     |      |     |      |     |      |        |
| MATERIAL AASHTO M 201 GR 250 7H                          |         |     |     |     |      |     |      |     |      |        |
| ELECTRODES PER HOLES 24# 1/4"                            |         |     |     |     |      |     |      |     |      |        |
| SURFACE PREP. & PAINT: GALVANIZE AASHTO M 111            |         |     |     |     |      |     |      |     |      |        |
| DESCRIPTION: SUSSET R. BRIDGE MATERIAL + LATERAL BRACING |         |     |     |     |      |     |      |     |      |        |
| JOB: TH4 OVER BLACK RIVER BRIDGE PROJECT CAVENDISH, VT   |         |     |     |     |      |     |      |     |      |        |
| CUSTOMER: MILLER CONSTRUCTION                            |         |     |     |     |      |     |      |     |      |        |
| CASCO BAY STEEL STRUCTURES, INC.                         |         |     |     |     |      |     |      |     |      |        |
| 75 SPRING HILL ROAD SACO, MAINE 04072                    |         |     |     |     |      |     |      |     |      |        |
| PHONE (207) 282-7360 FAX. (207) 282-1179                 |         |     |     |     |      |     |      |     |      |        |
| JOB NO. 236  |         |     |     |     |      |     |      |     |      |        |
| DRG. NO. 4   |         |     |     |     |      |     |      |     |      |        |
| REV. 1   |         |     |     |     |      |     |      |     |      |        |

05255