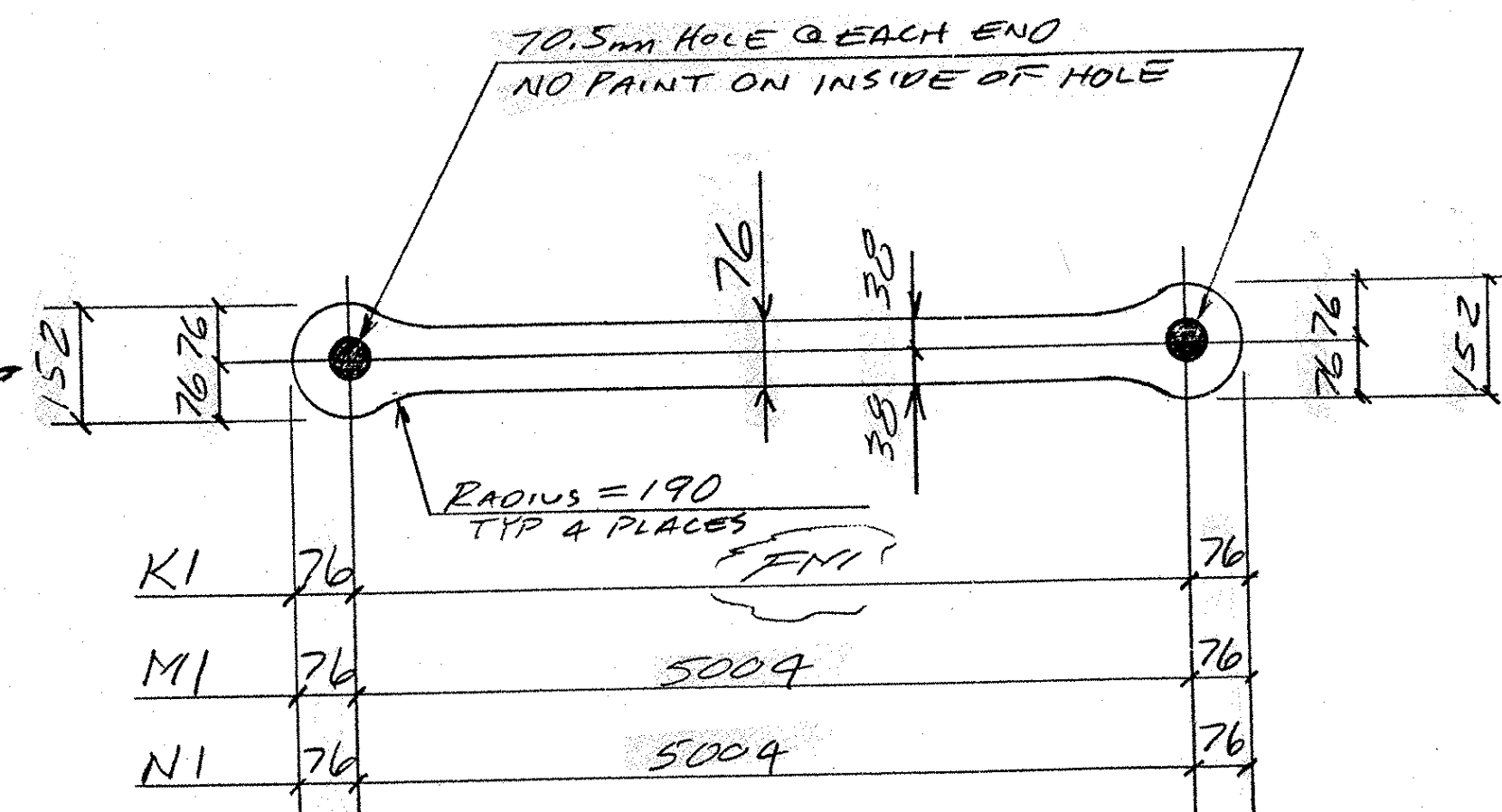
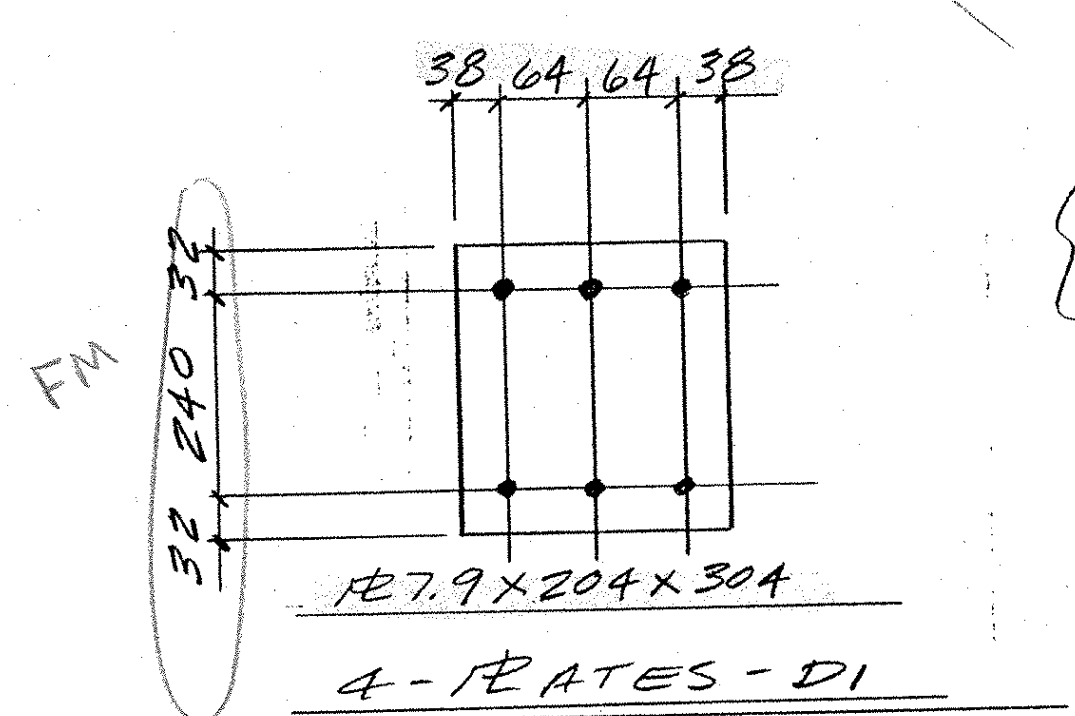
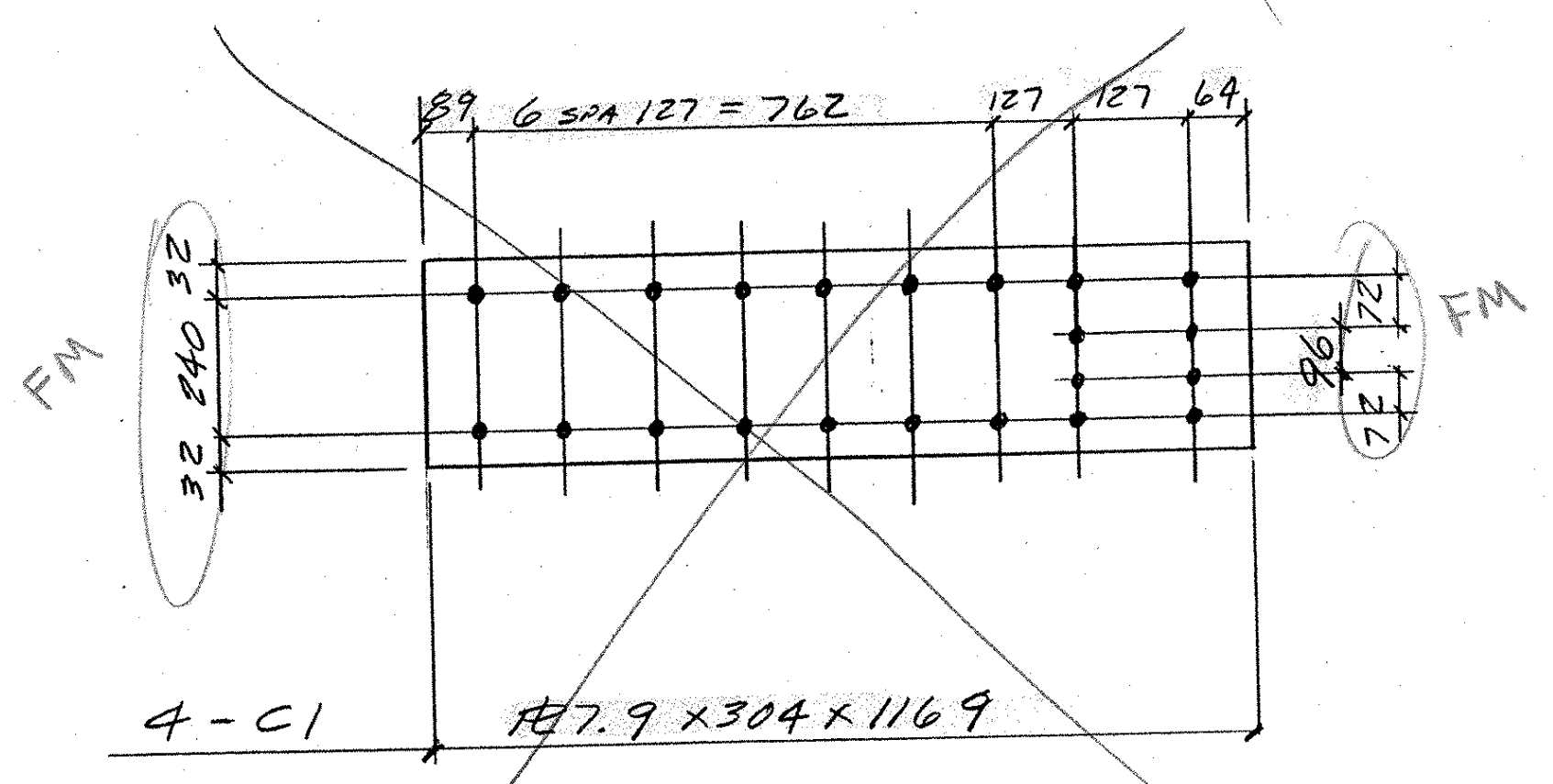
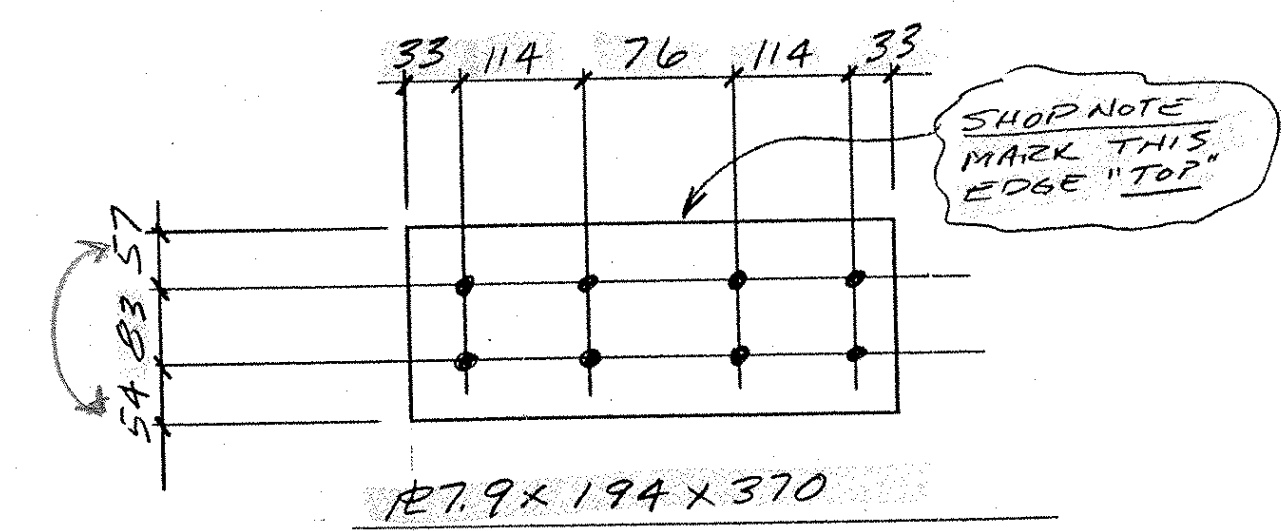
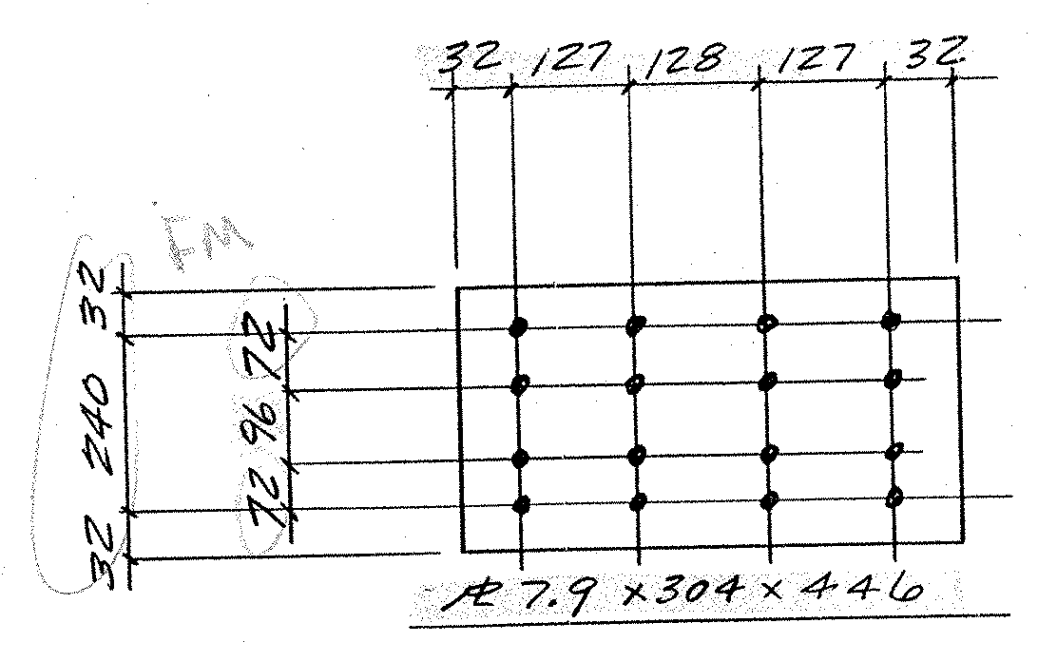
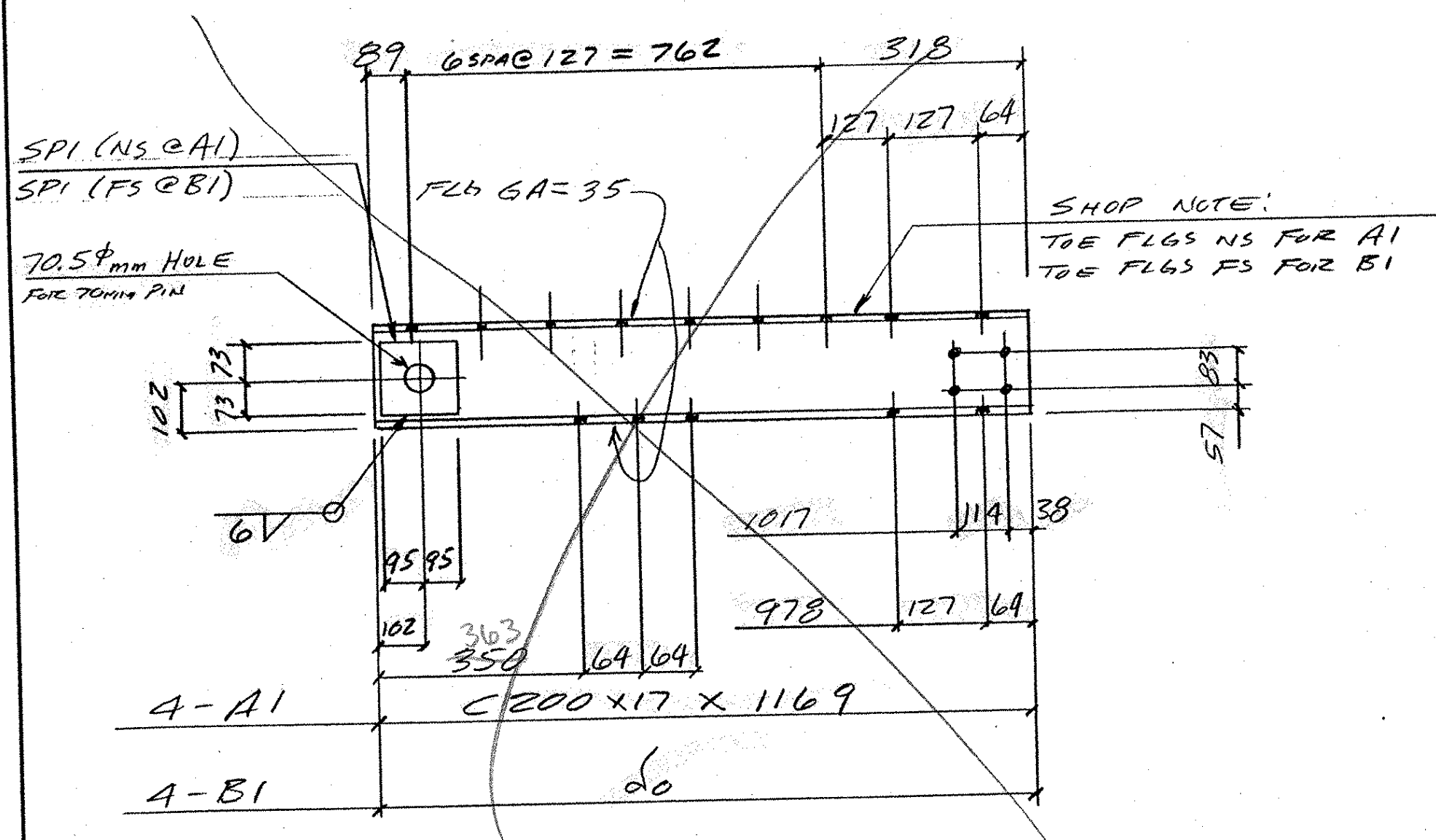
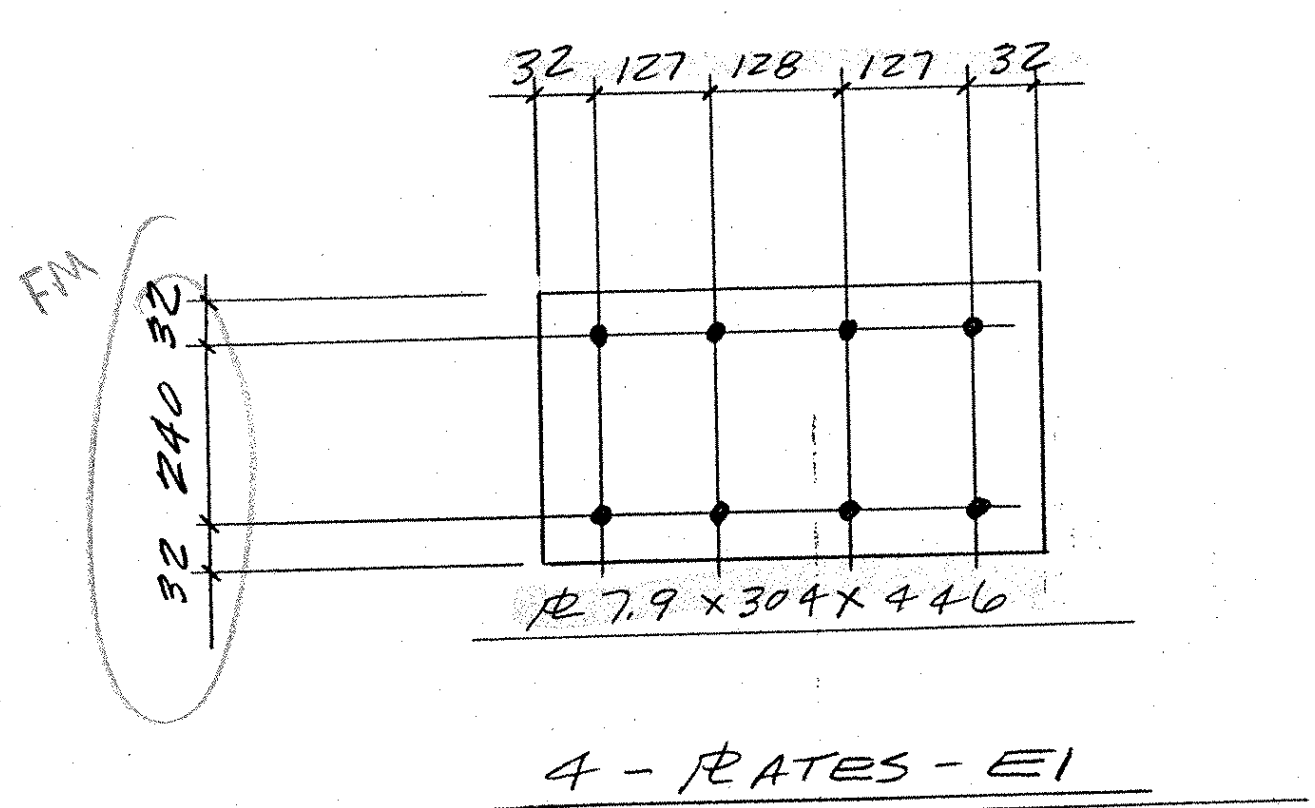


ABM INFO		SHOP BILL				JOB NO.	DRG. NO.	
PAGE	LINE	NO.	DESCRIPTION	QTY	ASSEM. MARK	SHIPPING MARK	REMARKS	WEIGHT
		4	C200 X 17	1169	A1		G.R. 345	
		4	do	1169	B1		G.R. 345	
		8	R7.9 X 146	190 SPI				
		4	R7.9 X 304	1169	C1			
		4	R7.9 X 204	304	D1			
		4	R7.9 X 304	446	E1			
		4	R7.9 X 304	446	F1			
		8	R7.9 X 194	370	H1			
		8	R19 X 152	FM	K1			
		8	R19 X 152	5156	M1			
		8	R222 X 152	5156	N1			
ALL BOLTS TO BE AASHTO M164M-TYPE I (6ALV) (NET COUNT)								
		96	M19 BOLTS	44	FIELD	W/W/W		
		112	do	50	FIELD	W/W/W + BEV. WASH		
		32	do	63	do	W/W/W		
		28	M19 BOLTS	44	FIELD	W/W/W		
		14	do	50	do	do		
		300	M22 BOLTS	57	FIELD	W/W/W		
		30	do	63	do	do		
		160	do	57	do	do		
		128	do	63	do	do		
		90	do	76	do	do		
		90	M16 BOLTS	44	FIELD	do		
PAY ITEM 506.60								

- ⊙ TRUSS END REPAIR
- ⊙ BTM CHRD HANGER
- ⊙ STEINERS LATERAL BRACES
- ⊙ FLOOR BEAMS TO GUSSET PL
- ⊙ WT FOR SIDEWALK



8-K1	R19 X 152 X FM
8-M1	R19 X 152 X 5156
8-N1	R222 X 152 X 5156



FM MATCH TO EXIST UNLESS EXIST 152mm THEN USE 152

SHP NOTE DIFF THICKNS R'S

NOTE FM = FIELD MEASURE

PLANS DRAWN USING METRIC DIMENSIONS

Channels & Bot. Batter R's will be totally replaced for members L0-U1 & U5-L6 on both trusses

RECEIVED APR 27 2004

OUT FOR APPROVAL	4/23/04										
ISSUED TO SHOP											
FIELD & OFFICE											
REV.	REMARKS	DATE	DMN	CHK	APP	Q.A.	NO.	DIA.	LGT	TYPE	WASHER
PROJECT NO. BHO 1442 (22) STATE PROJECT NO. BHO 1442 (22)											
MATERIAL: AASHTO M164M PER 250 1/4" ELECTRODES: PER 250 1/4" HOLES: 21 1/4" SHOP BOLTS:											
SURFACE PREP. & PAINT: Prep: SSPC-SP10 Paint: 3-Coat System C Primer: Wasser - MC Zinc Intermediate: Wasser - MC Ferrox B Topcoat: Wasser - MC Luster Color - Green Federal Color Standard No. 595, Color Chip No 14062											
DESCRIPTION: TRUSS REPAIR MAT'L + BTM CHRD + EYEBARS										DRAWN BY	DATE
JOB: T44 OVER BLACK RIVER BRIDGE PROJECT CAVENDISH, VT										RLB	4-04
										CHKD BY	
										APPROV BY	
										Q.A.	
CUSTOMER: MILLER CONSTRUCTION										JOB NO.	DRG. NO.
CASCO BAY STEEL STRUCTURES, INC.										236	1
75 SPRING HILL ROAD SAGO, MAINE 04072										REV.	Δ
PHONE (207) 282-7360 FAX. (207) 282-1179											