

PLEASE VERIFY WILL BE FABRICATED AS SHOWN IF NOT MARKED.

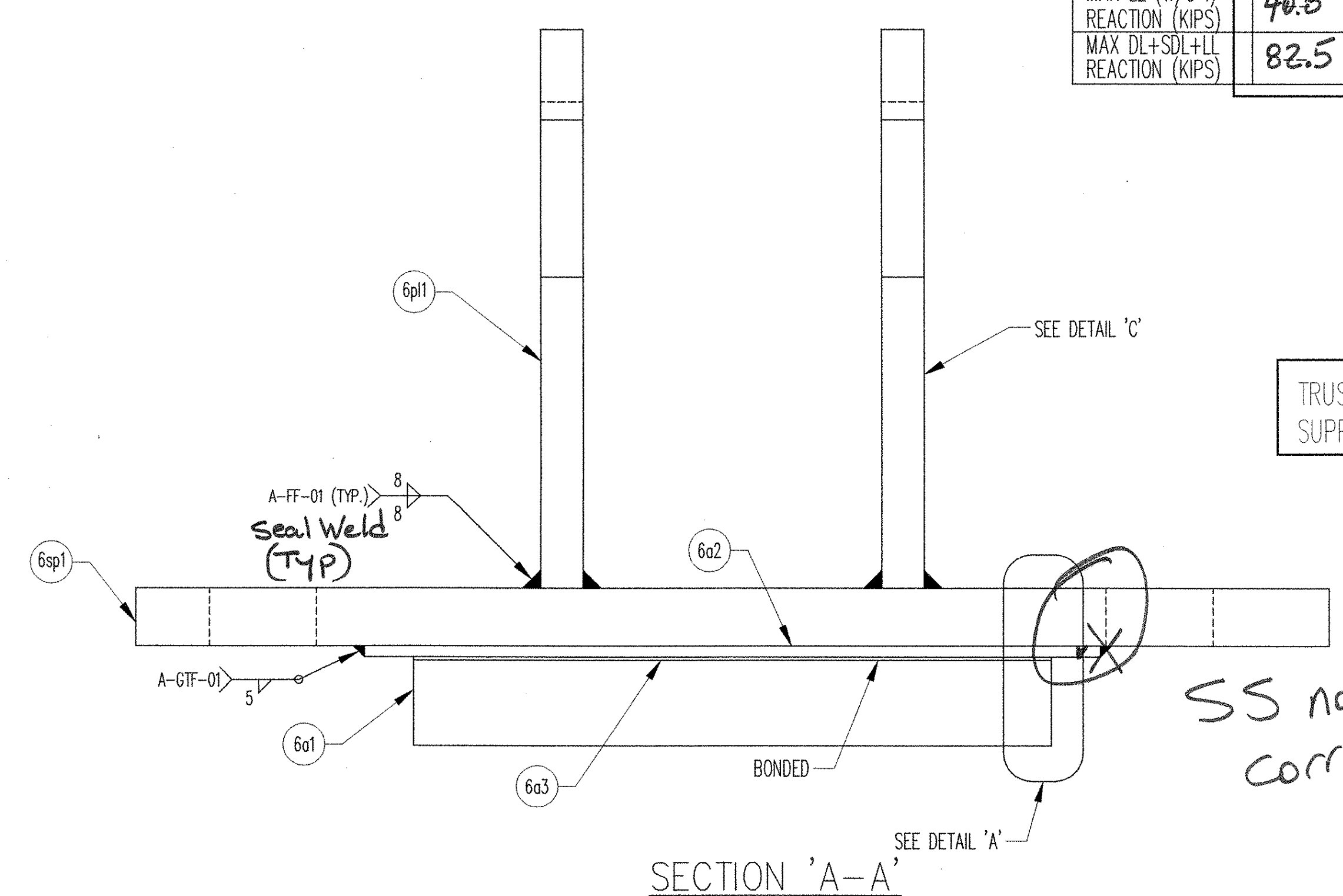
PLAN VIEW
EXPANSION PREFORMED FABRIC BEARING
(2) REQ'D @ ABUT. 2, TRUSS DOWNSTREAM

LOAD TABLE INFORMATION

LOAD DATA	
MAX DL + SDL REACTION (KIPS)	41.7
MAX LL (W/O I) REACTION (KIPS)	40.8
MAX DL+SDL+LL REACTION (KIPS)	82.5

PLEASE PROVIDE. WILL NEED FOR TESTING.

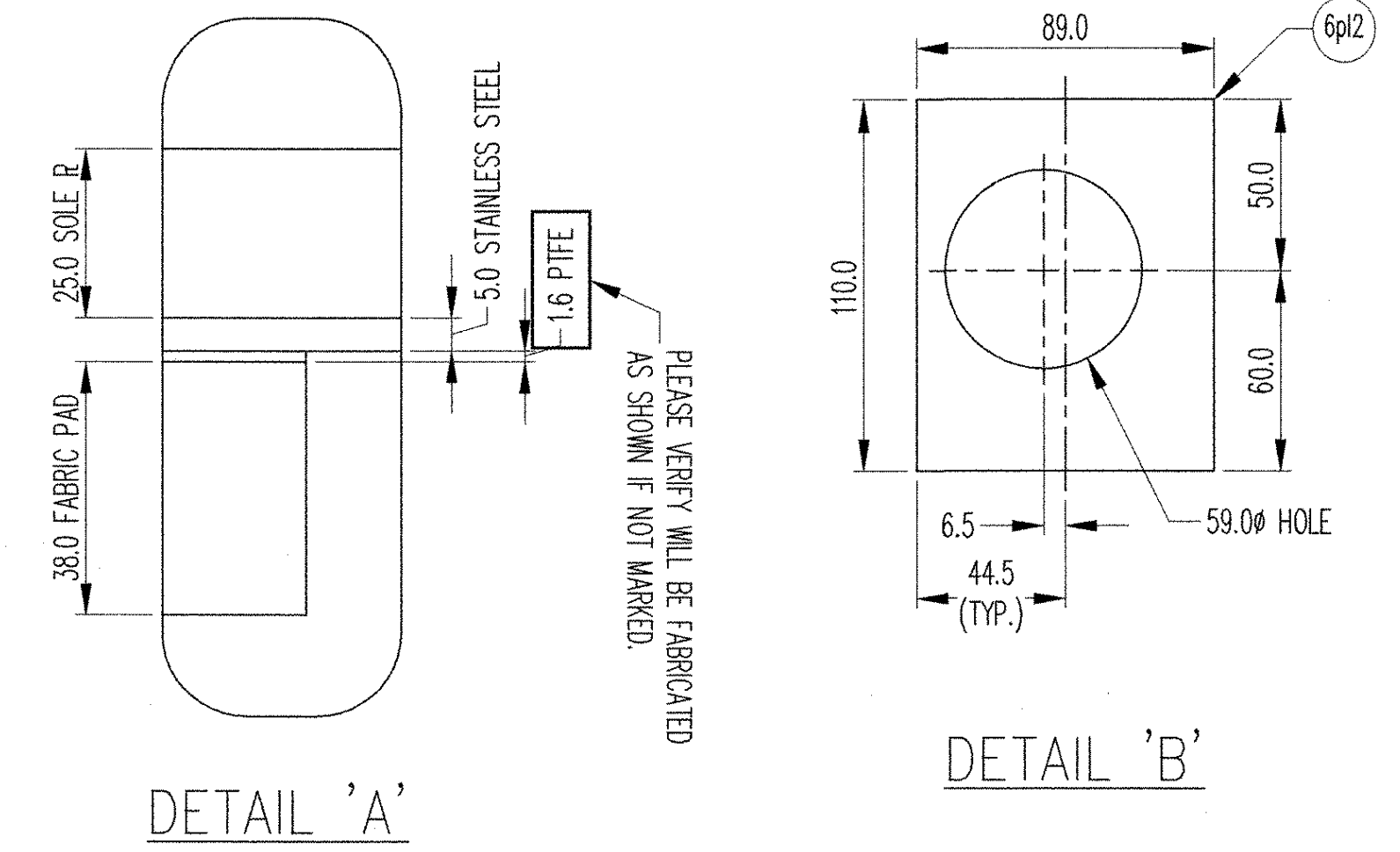
TRUSS PINS & CLEVIS PINS SUPPLIED BY OTHERS.



SECTION 'A-A'

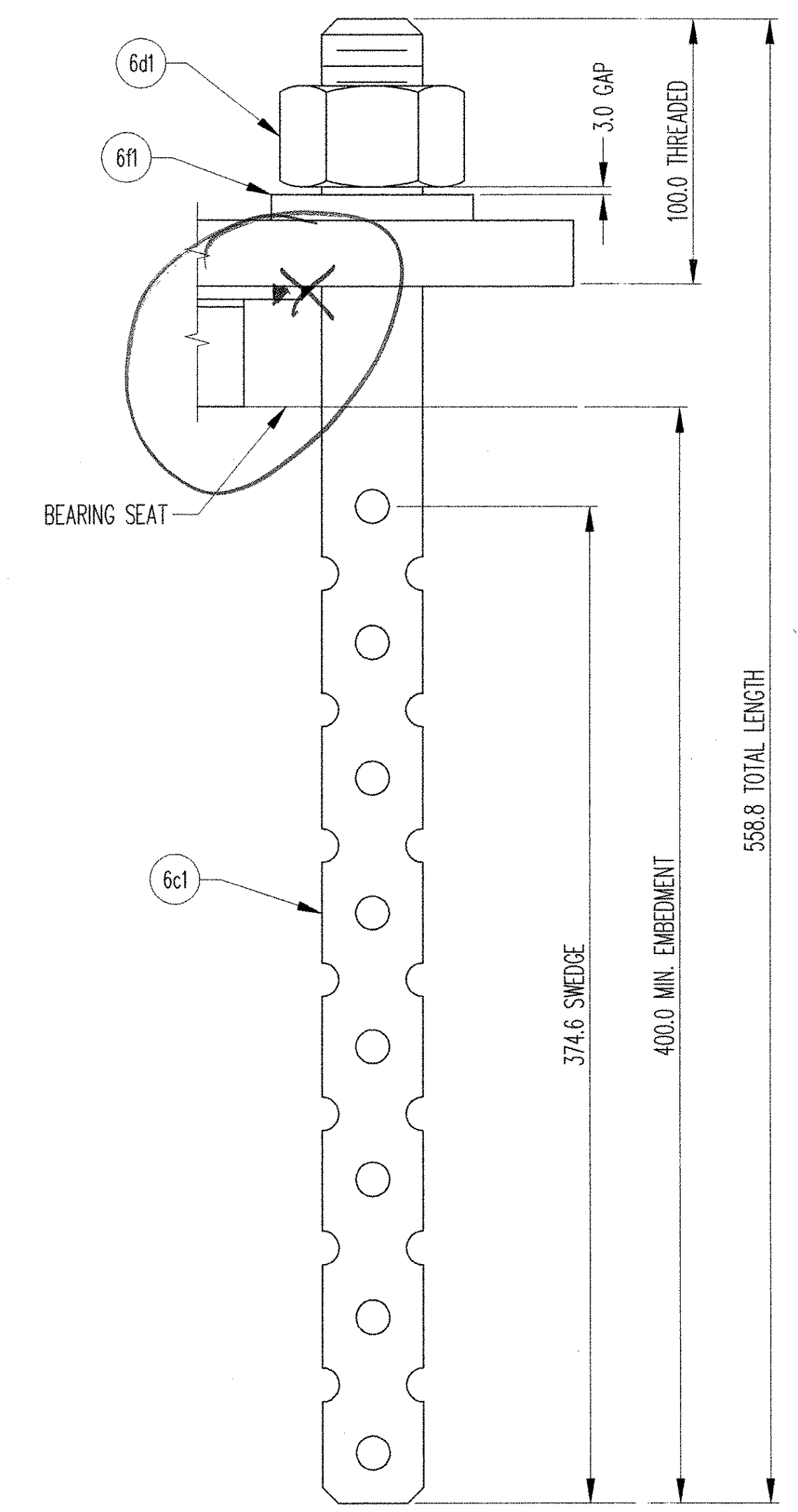
SS not shown correctly

PLEASE VERIFY THAT THIS BEARING IS SHOWN AS REQUIRED BY NOTE 1 IN CONTRACT PLANS. WILL BE FABRICATED AS SHOWN IF NOT MARKED.



DETAIL 'A'

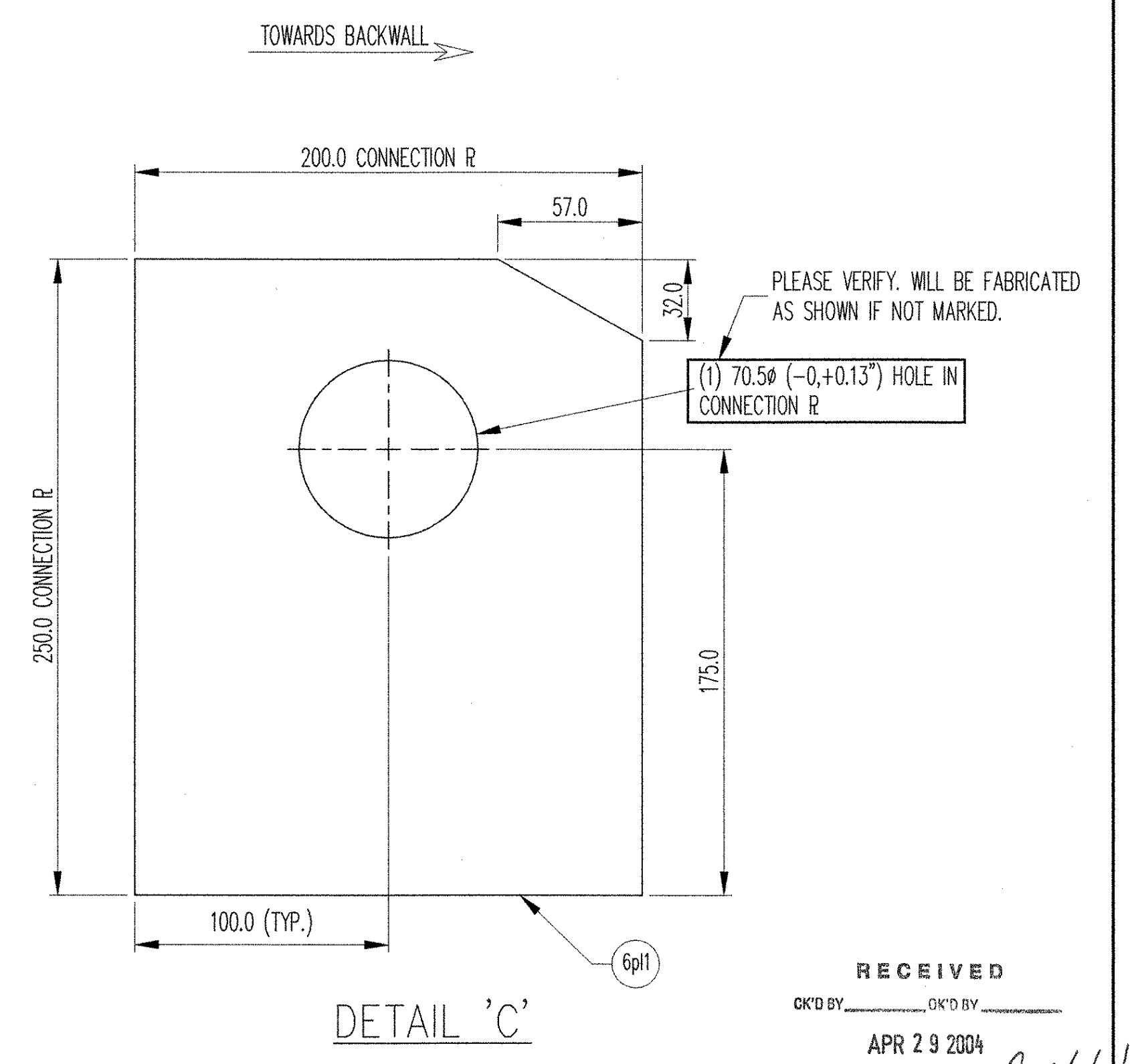
DETAIL 'B'



ANCHOR ROD DETAIL

MK	QTY.	DESCRIPTION	MATERIAL	LENGTH	REMARKS	PART NO.
6A	1	PREFORMED FABRIC PAD	731.01			
6a1	1	38.0 X 286.0	VT 707.07	190.0	(AASHTO M270 GR 345)	
6a2	1	5.0 X 316.0	A240, TYPE 304	320.0	#8 MIRROR FINISH; PLAIN	
6a3	1	1.6 X 286.0	PTFE	190.0	PURE VIRGIN UNFILLED	
6p11	2	19.0 X 200.0	A709 GR 345	250.0	(AASHTO M270 GR 345); CLIP CORNER; A123-HDG	
6p12	1	19.0 X 89.0	A709 GR 345	110.0	(AASHTO M270 GR 345); A123-HDG	
6sp1	1	25.0 X 535.0	A709 GR 345	340.0	(AASHTO M270 GR 345); A123-HDG	
6B	2	SWEDGE ANCHOR ROD				
6b1	2	38.1 X 558.8	A36		(AASHTO M593); 374.6 SWEDGE; 100.0 THREADED; A153-HDG	
6C	2	HEAVY HEX NUT				
6c1	2	38.1	A563-DH/A194-2H		(AASHTO M228-DH/A194-2H); SEE NOTE 7; A153-HDG	
6D	2	WASHER PLATE				
6d1	2	9.5 X 76.2	A36	152.4	41.3 DIA. HOLE; A153-HDG	

NOTE: ALL DIMENSIONS IN MILLIMETERS, UNLESS OTHERWISE NOTED.
NOTE: ALL MATERIAL SPECIFICATION DESCRIPTIONS ARE ASTM, UNLESS OTHERWISE NOTED.



DETAIL 'C'

RECEIVED
OK'D BY: _____ OK'D BY: _____
APR 29 2004
RESUBMIT APPROVED *As Noted*
BY *RLW* DATE *5-12-04*

FOR GENERAL NOTES SEE SHEET G01.

D.S. BROWN
300 E. CHERRY STREET
NORTH BALTIMORE, OHIO 45872
419.257.3561
FAX: 419.257.0332
4201 NOREX DRIVE
CHASKA, MINNESOTA 55318
952.368.3000
FAX: 952.448.7000
DSBROWN.COM

REV	DESCRIPTION	DATE	DET.	CKD.
	LOCATION — T.H. 4 OVER BLACK RIVER CAVENDISH		ITEM	QUANTITY
	BRIDGE — 12		11091-1106-4	1 of 2
	PROJECT — BHO 1442 (22)			
	F.A.P. NO. —			
	P.O. NO. —			
	DESIGNER — VANASSE HANGEN BRUSTLIN, INC.			
	CUSTOMER — MILLER CONSTRUCTION			
DESCRIPTION: PREFORMED FABRIC BEARING WINDSOR COUNTY, VERMONT <i>046 RB</i>		SCALE: N.T.S.	DRAWN BY: B.COPPUSE, KELLEY	CHECKED BY: 4/22/04
		PROJECT NUMBER: 11091	PRODUCT CODE: 1106	RELEASE: 1
				SHEET: 06