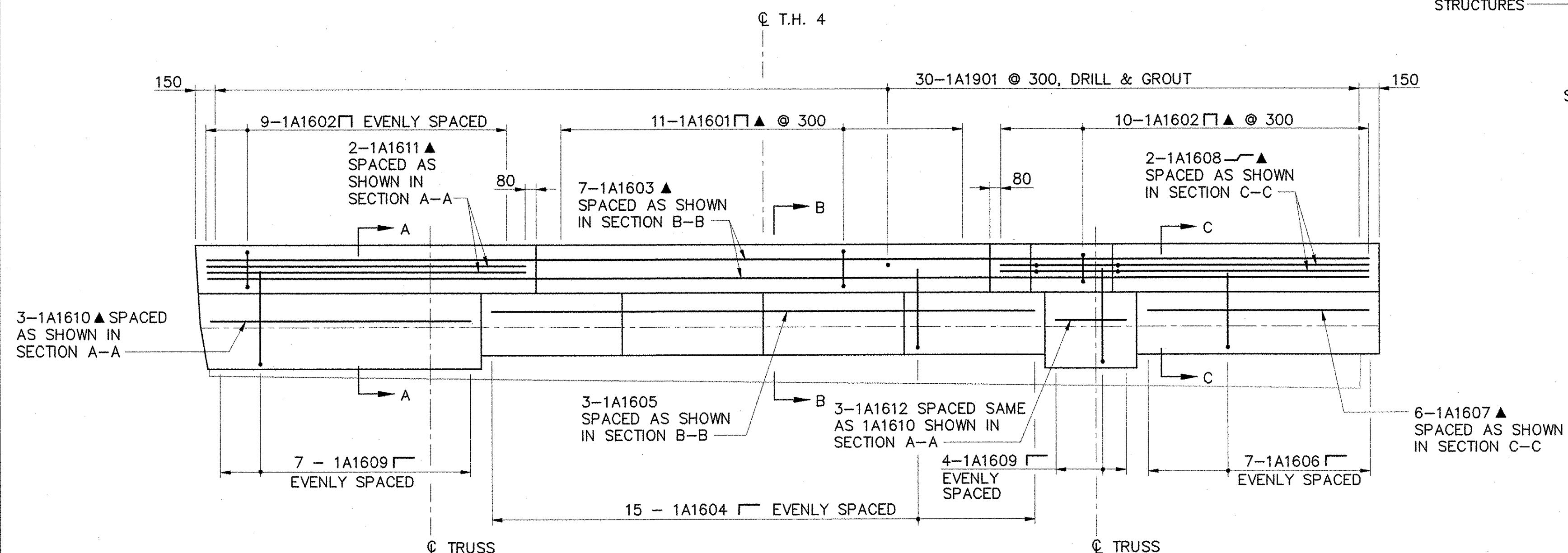
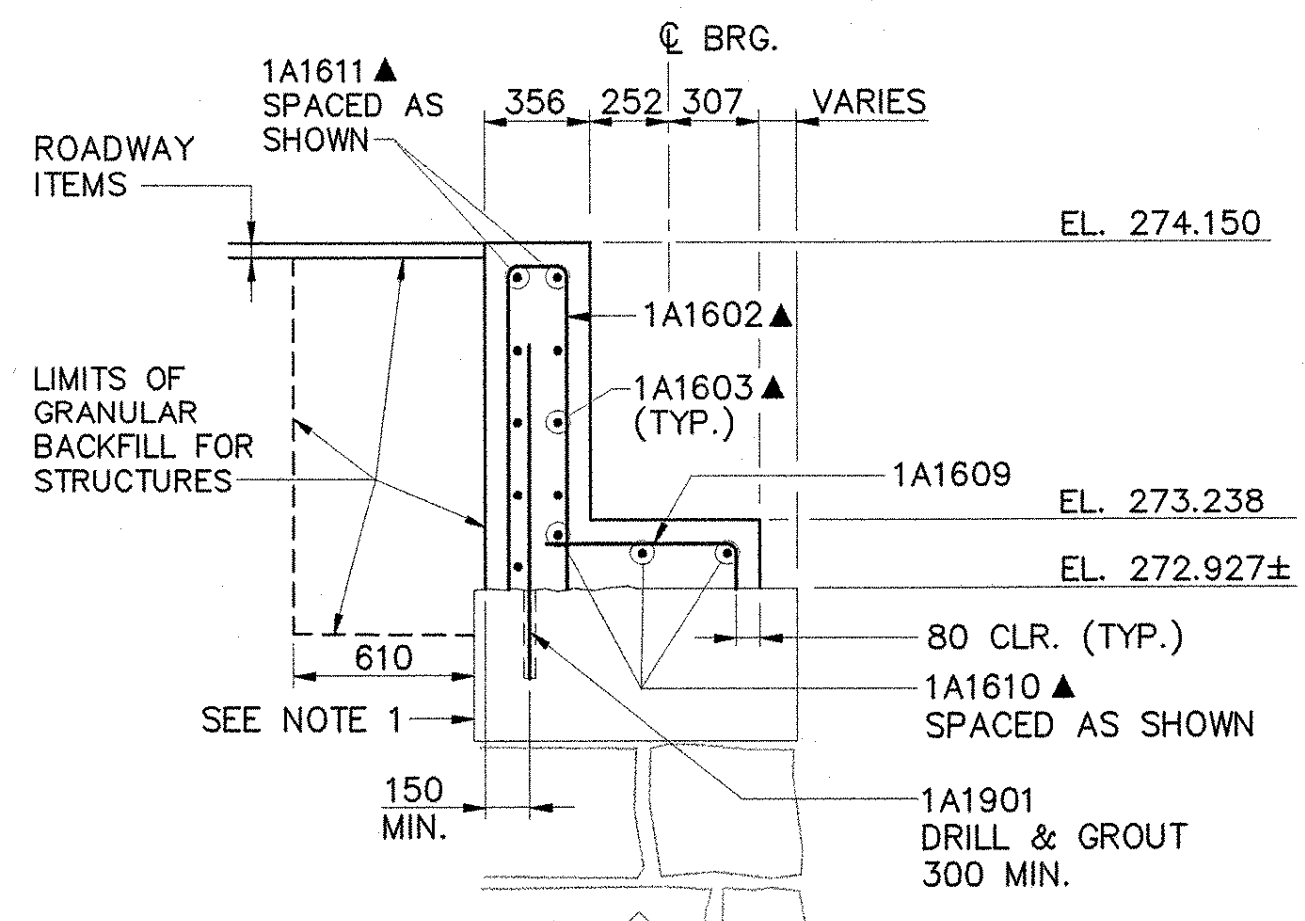


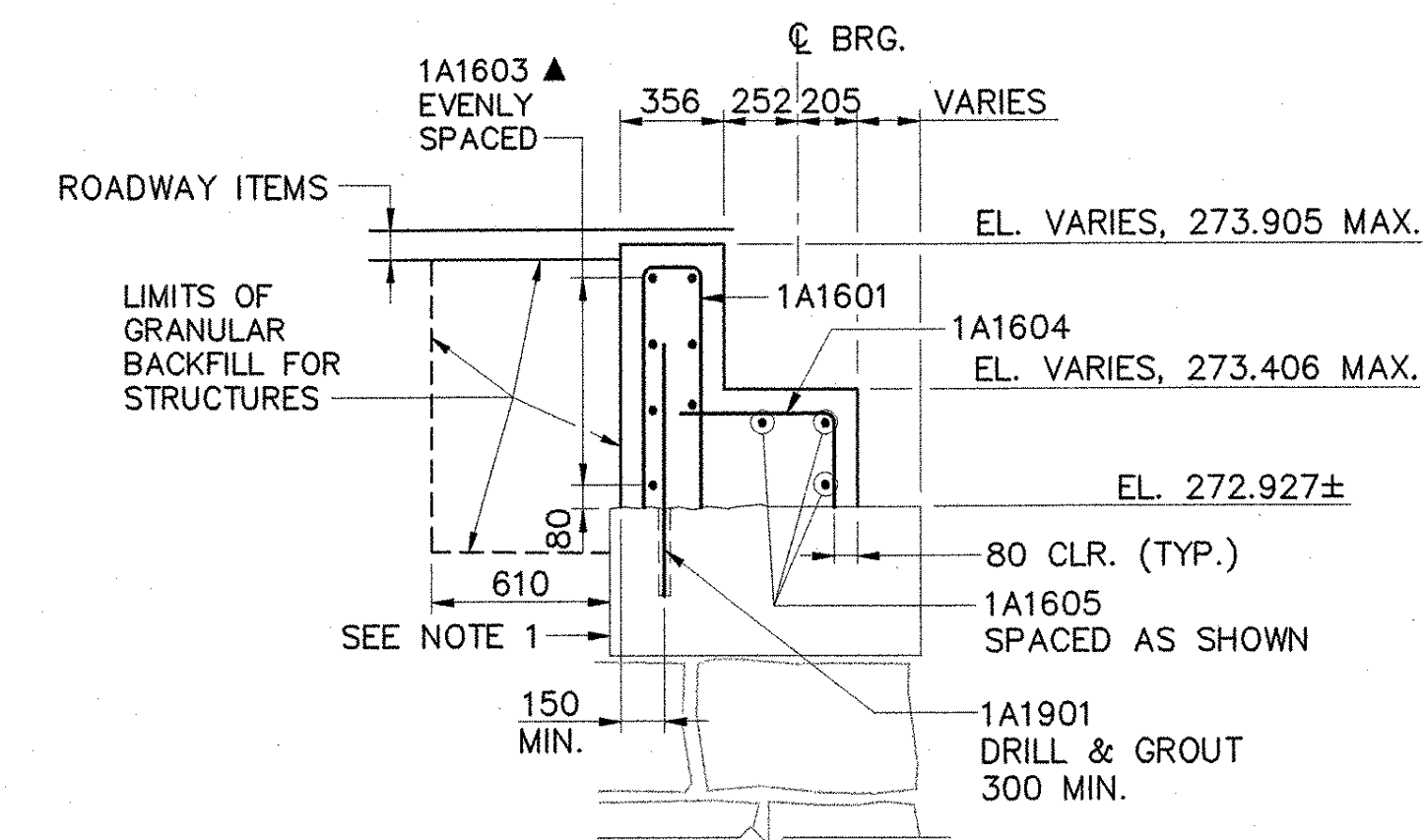
PROPOSED MASONRY PLAN
SCALE: 1:25



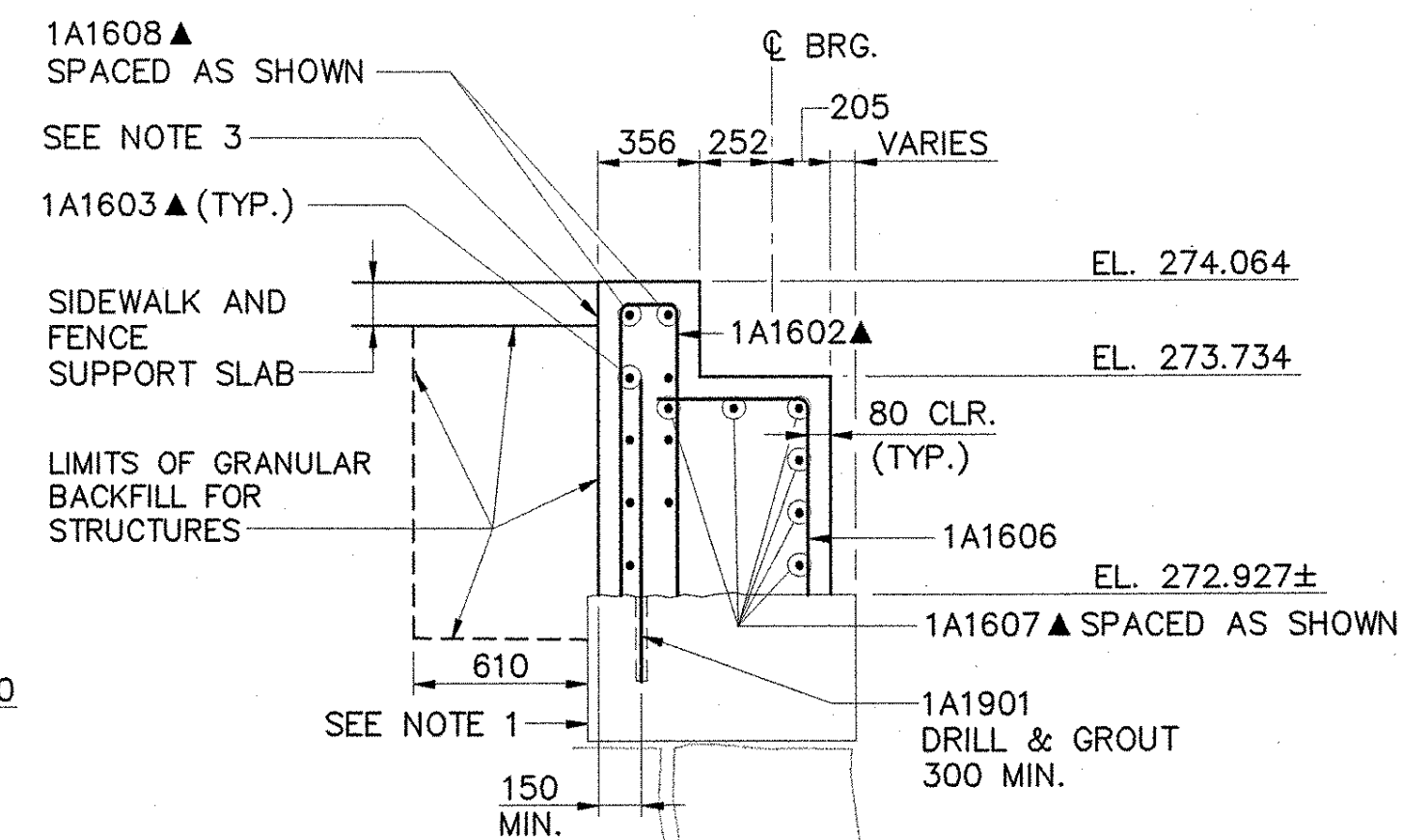
PROPOSED REINFORCEMENT PLAN
SCALE: 1:25



SECTION A-A
SCALE: 1:25



SECTION B-B
SCALE: 1:25



SECTION C-C
SCALE: 1:25

NOTES:

1. AN ASSUMED CONFIGURATION OF THE BACK OF EXISTING BACKWALL AND ABUTMENT IS SHOWN IN THE SECTIONS ON THIS SHEET. THE ACTUAL CONFIGURATION IS UNKNOWN.
2. ADJUST DIMENSIONS NOTED WITH AN * AS NECESSARY TO MATCH EXISTING ABUTMENT AND WINGWALL FACES.
3. PROVIDE BOND BREAKER APPROVED BY THE ENGINEER BETWEEN BACK OF ABUTMENT BACKWALL AND EDGE OF SIDEWALK AND FENCE SUPPORT SLAB. COSTS FOR BOND BREAKER SHALL BE INCIDENTAL TO ITEM 501.33, CONCRETE, HIGH PERFORMANCE CLASS A.

**STATE OF VERMONT
AGENCY OF TRANSPORTATION**

Town Of	CAVENDISH	Bridge No.	12
		Log Sta.	
Highway No.	T.H. 4	Surv. Sta.	

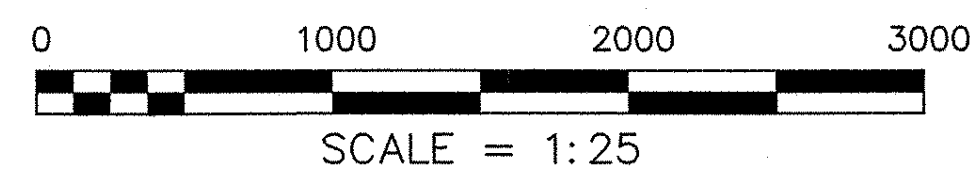
T.H. 4 OVER BLACK RIVER

ABUTMENT 1 MODIFICATIONS

Designed By	T.S. BRYANT	Drawn By	M.M. LANDREY
Checked By	Date	Bridge Design Supervisor	
	W.M. MOSHER	1/04	S.W. JOHNSON Date 1/04

PROJECT	CAVENDISH	PROJECT NO.	BHO 1442 (22)
---------	-----------	-------------	---------------

I.G.C. Info.	Bridge Sheet No. 49912AM1	Sheet	23 of 34
--------------	---------------------------	-------	----------



VANASSE HANGEN BRUSTLIN, INC.