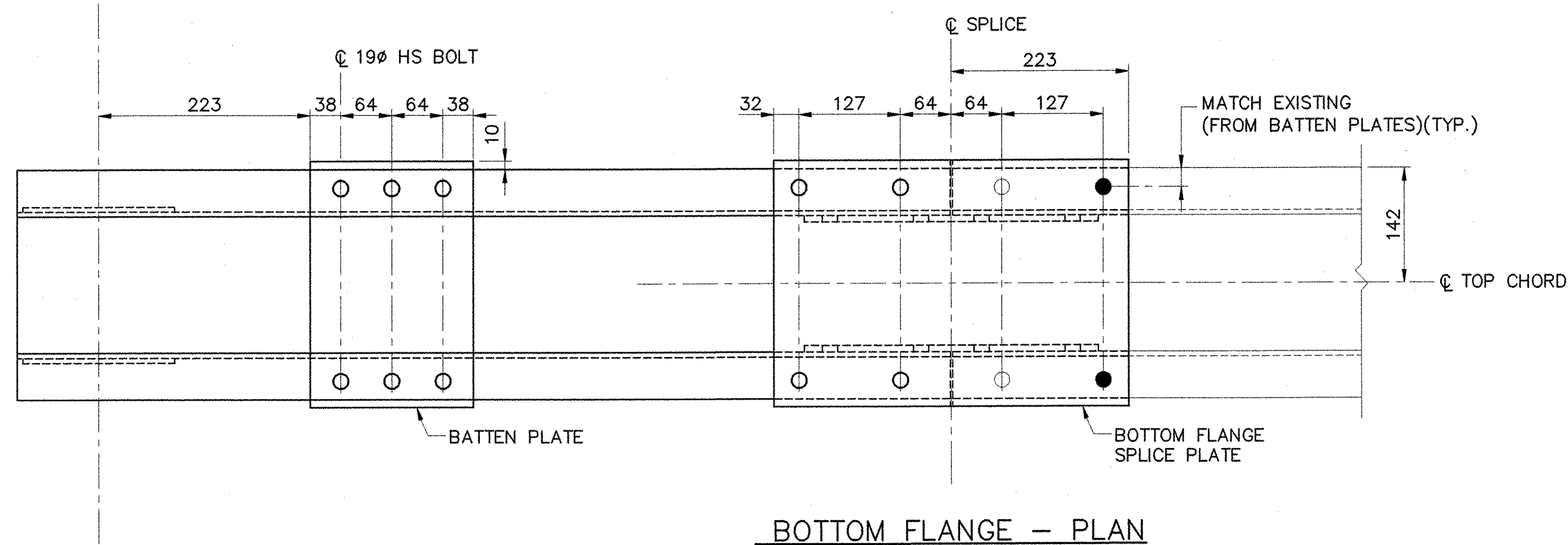
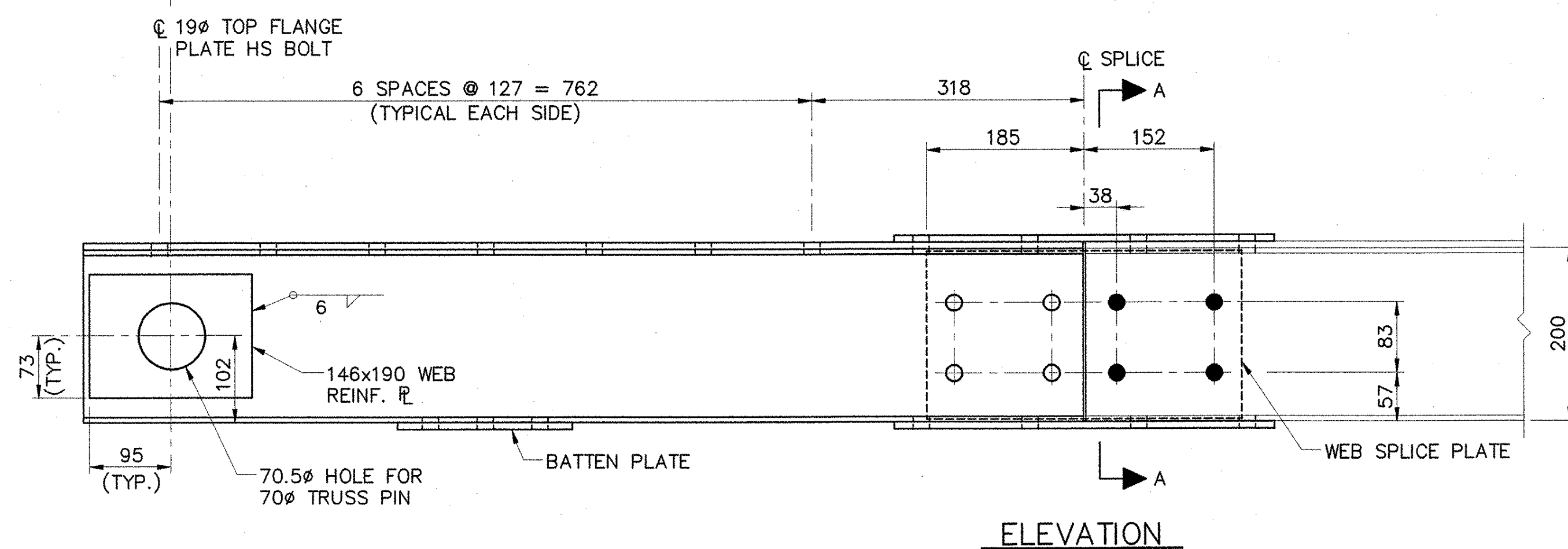


TOP FLANGE - PLAN
(TOP FLANGE PLATE BOLTS NOT SHOWN)

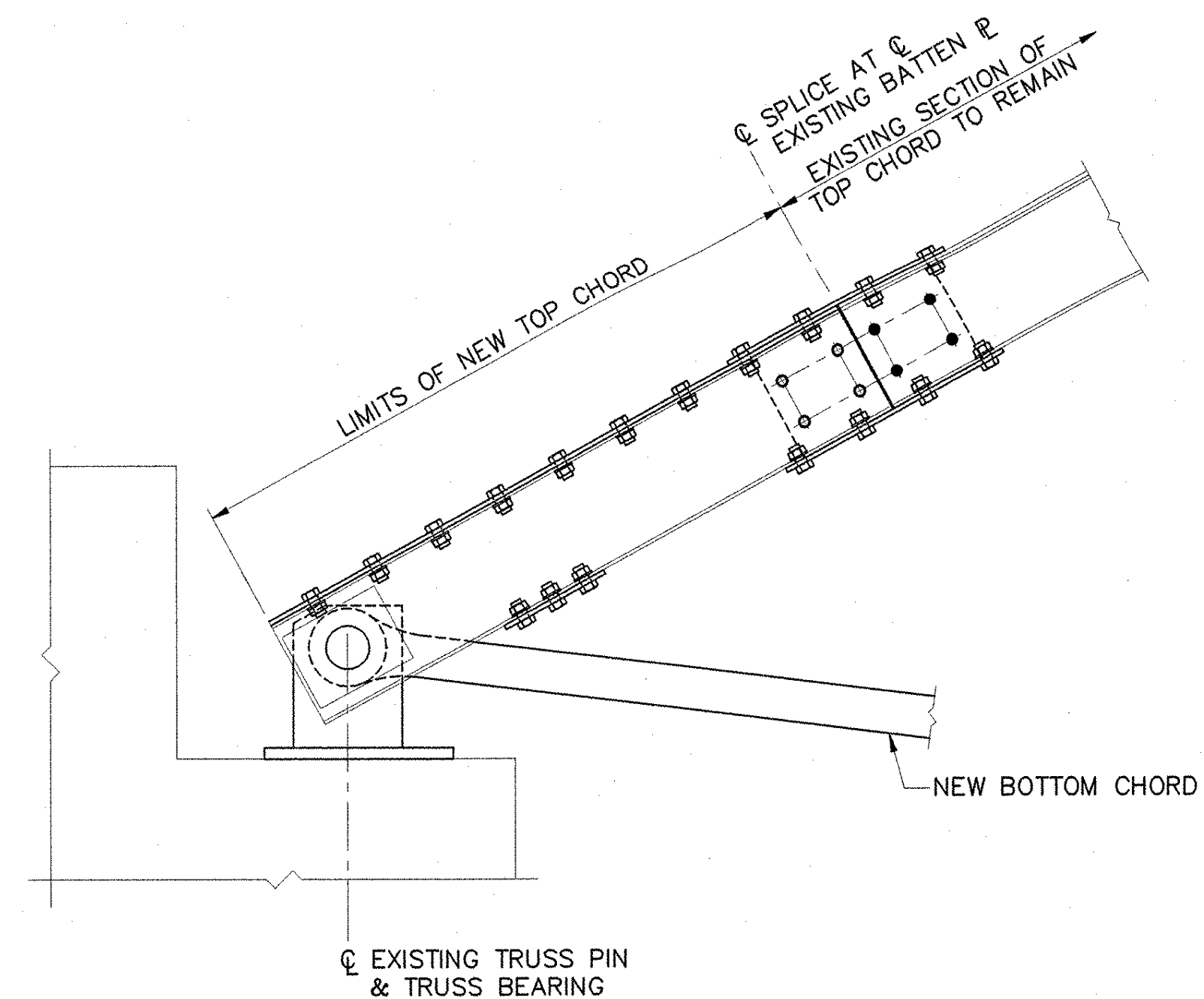


BOTTOM FLANGE - PLAN

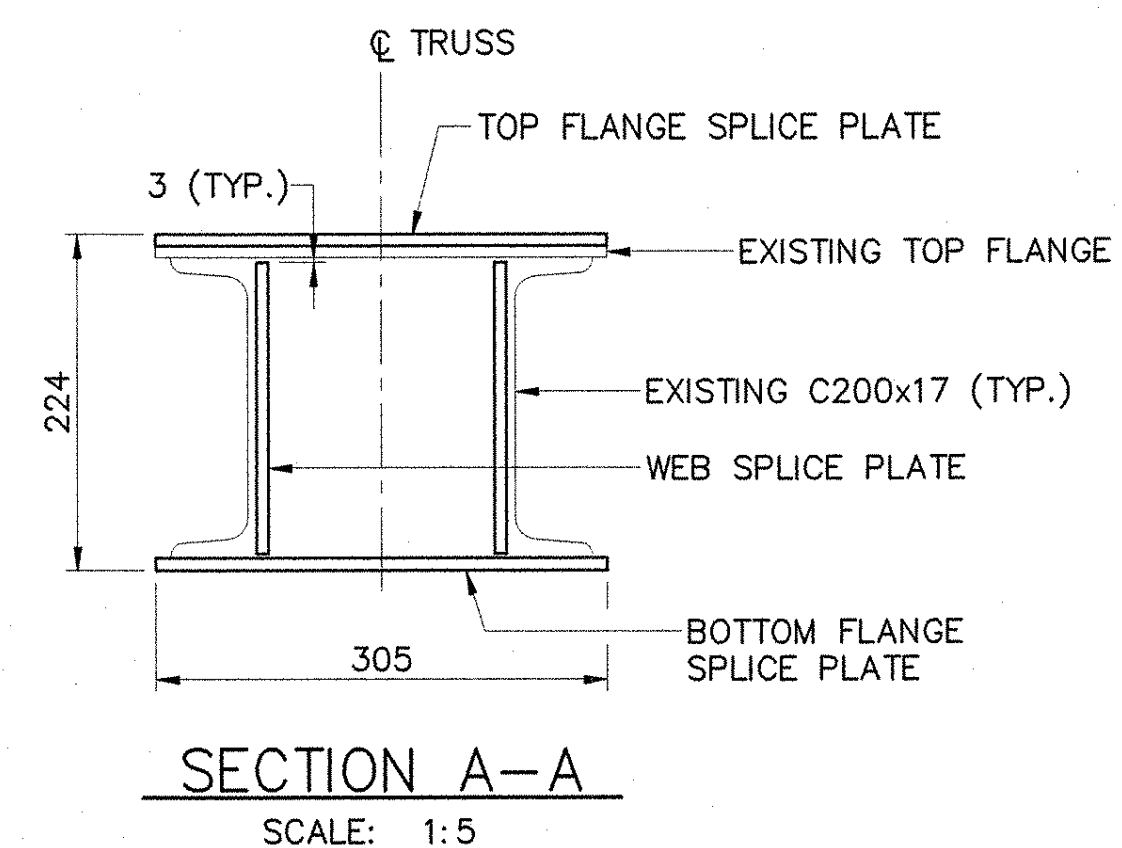


ELEVATION

SPLICE DETAILS
SCALE: 1:5



TYPICAL TRUSS END DETAIL
SCALE: 1:10



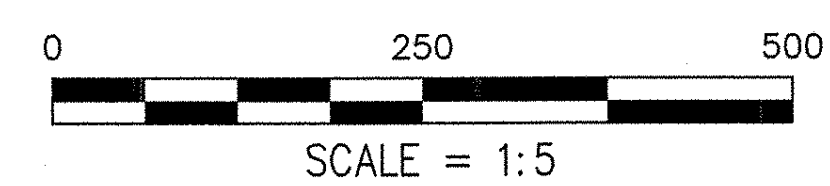
SECTION A-A
SCALE: 1:5

NOTES:

1. REMOVE AND REPLACE EXISTING TOP CHORD MEMBER AND BATTEN PLATE WITH NEW BUILT-UP TOP CHORD MEMBER.
2. DIMENSIONS TO EXISTING RIVET HOLES ARE APPROXIMATE AND SHALL BE FIELD VERIFIED BY THE CONTRACTOR.
3. ALL NEW AND EXISTING PLATES ARE 7.9 mm THICK UNLESS OTHERWISE NOTED.
4. MAXIMUM GAP BETWEEN EXISTING TOP CHORD AND NEW TOP CHORD SHALL BE 3 mm.

LEGEND

- NEW 19# HS BOLTS IN EXISTING RIVET HOLES
- NEW 19# HS BOLTS IN HOLES DRILLED IN EXISTING MEMBERS
- NEW 19# HS BOLTS IN NEW MEMBERS



VANASSE HANGEN BRUSTLIN, INC.

**STATE OF VERMONT
AGENCY OF TRANSPORTATION**

Town Of	CAVENDISH	Bridge No.	12
Highway No.	T.H. 4	Log Sta.	
		Surv. Sta.	

**T.H. 4 OVER BLACK RIVER
TRUSS REPAIR DETAILS (1 OF 2)**

Designed By	W.M. MOSHER	Drawn By	M.M. LANDREY
Checked By	Date	Bridge Design Supervisor	Date
T.S. BRYANT	1/04	S.W. JOHNSON	1/04
PROJECT	CAVENDISH	PROJECT NO.	BHO 1442 (22)
I.G.C. Info.		Bridge Sheet No.	49912TRD
		Sheet	13 of 34