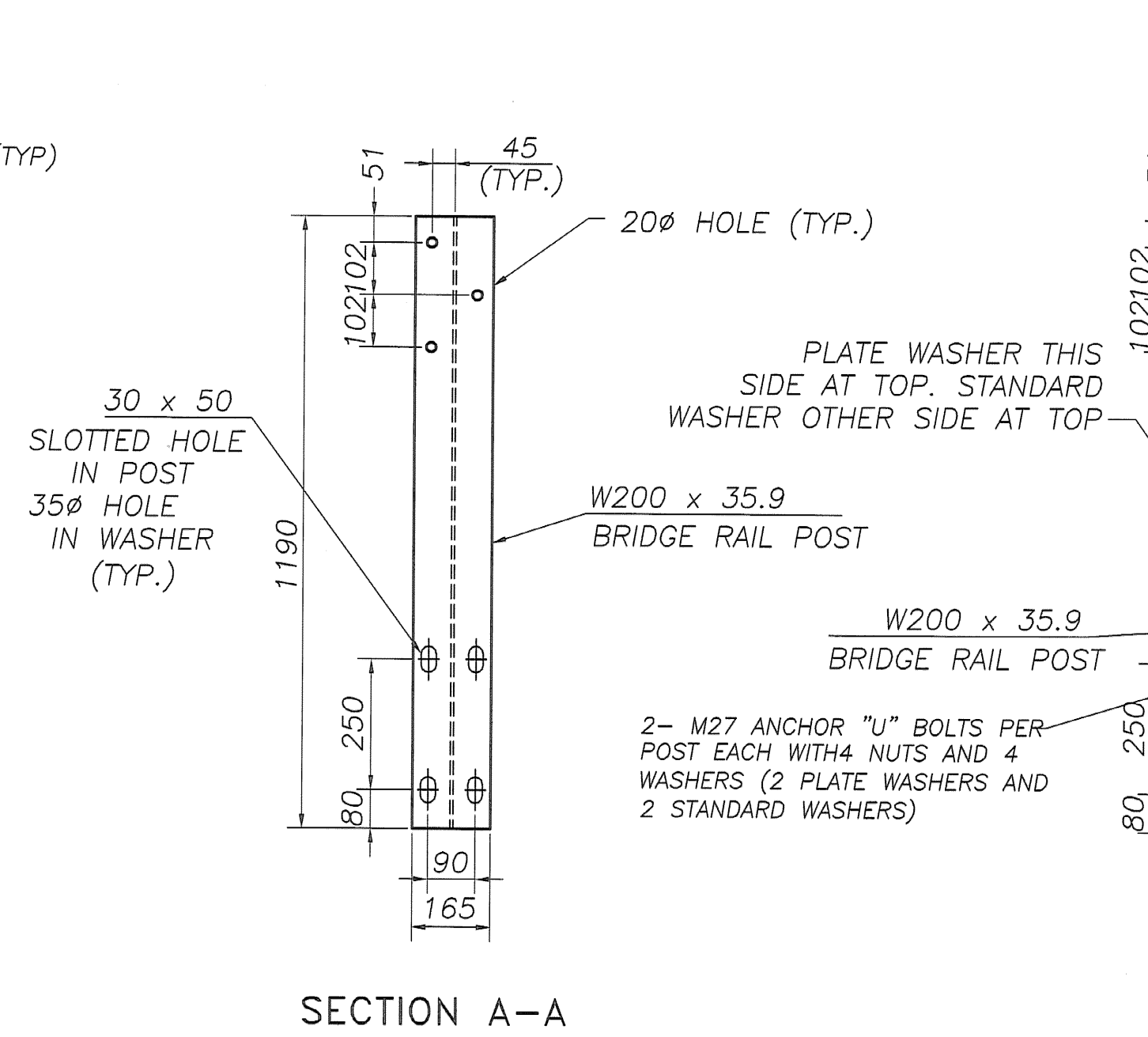
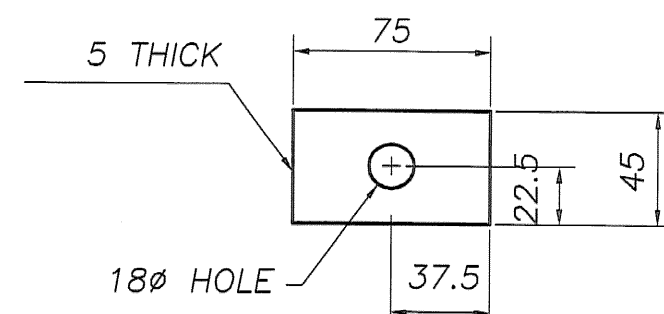


TRANSITION POST
W200x35.9



SECTION A-A

FASCIA MOUNTED POST



SPECIAL WASHER DETAIL

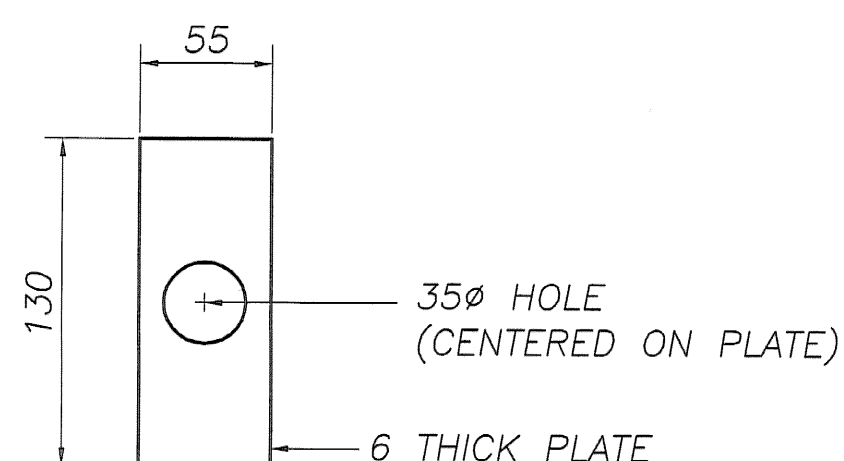
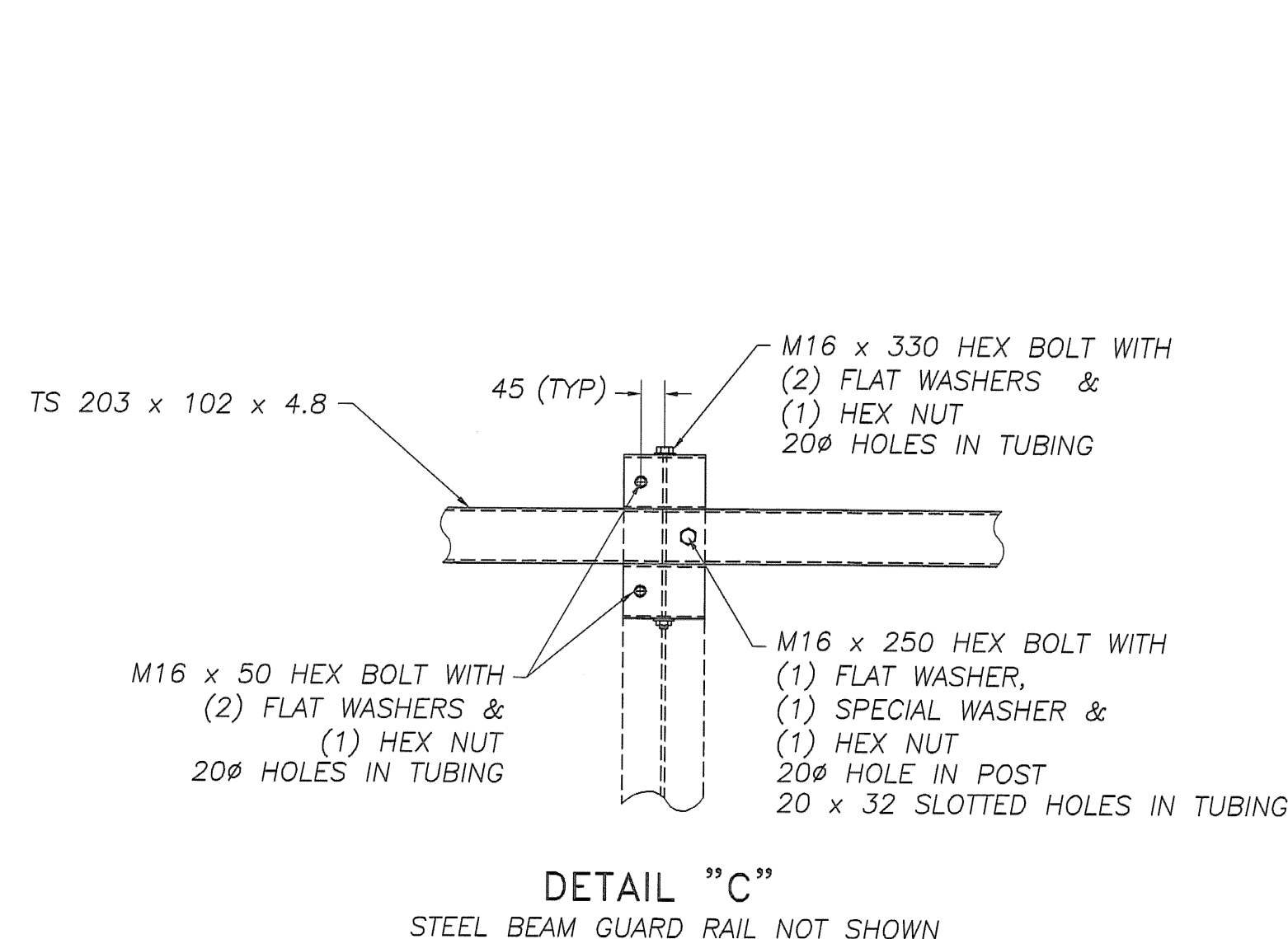
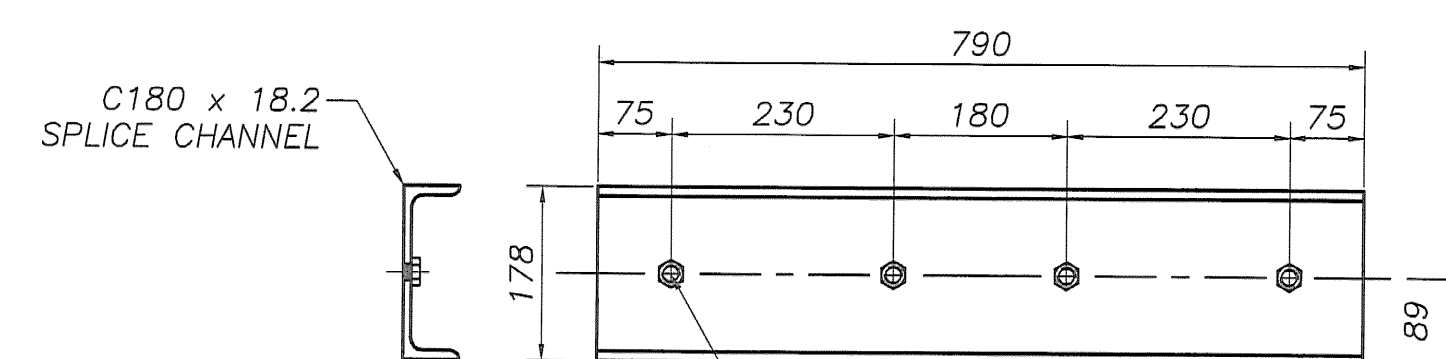


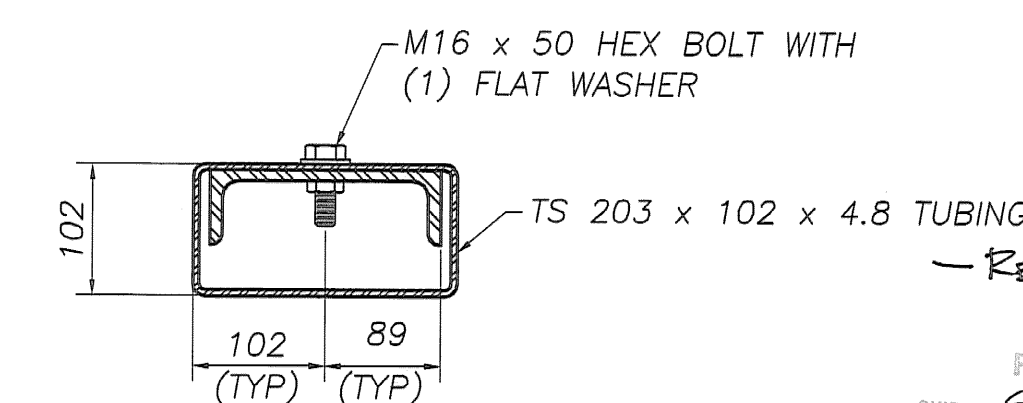
PLATE WASHER DETAIL
PROVIDED BY OTHERS - SHOWN FOR REFERENCE ONLY



DETAIL "C"
STEEL BEAM GUARD RAIL NOT SHOWN

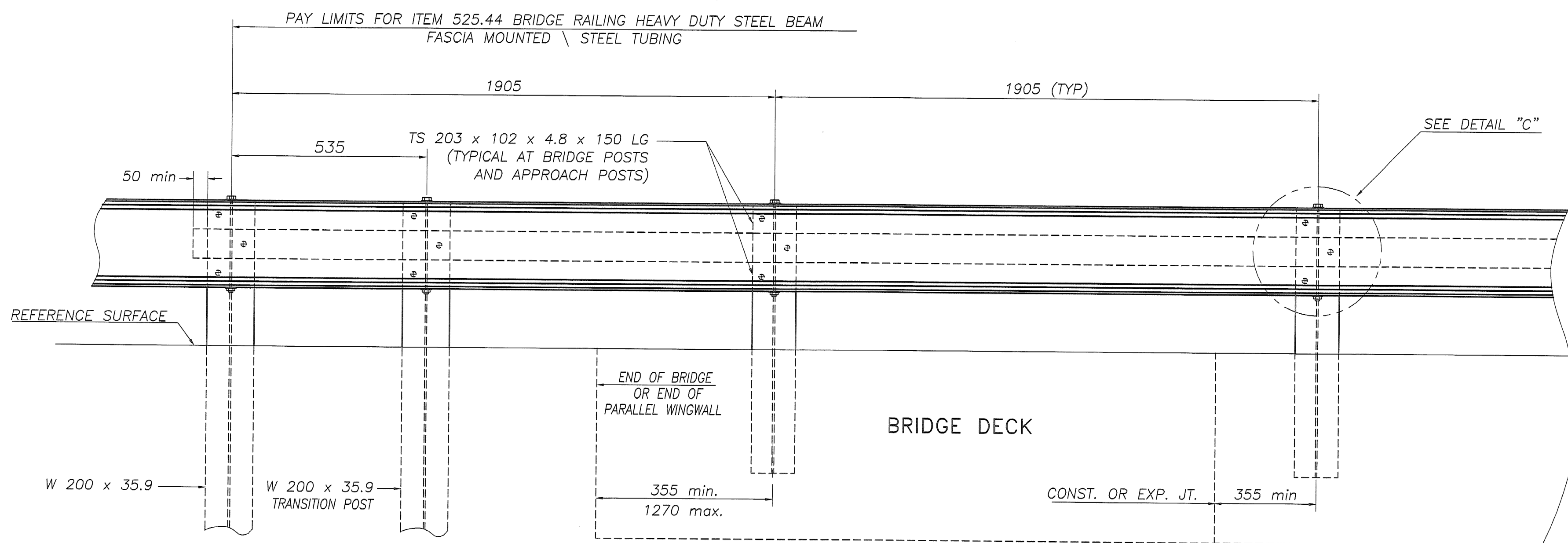


SPLICE BAR DETAIL



SECTION THROUGH SPLICE
SHOWING HAND RAIL TUBE & SPLICE CHANNEL

- NOTES:**
- HEAVY DUTY STEEL BEAM GUARD RAIL SHALL CONFORM TO VAOT STD. SPECIFICATION 732.
 - STRUCTURAL STEEL TUBING SHALL CONFORM TO VAOT STD. SPECIFICATION 732 AND SHALL BE GALVANIZED AFTER FABRICATION IN ACCORDANCE WITH AASHTO M 111.
 - ANCHOR BOLTS, NUTS AND WASHERS SHALL BE GALVANIZED IN ACCORDANCE WITH AASHTO M 223 AND SHALL CONFORM TO VAOT STD. SPECIFICATION 714 UNLESS OTHERWISE NOTED.
 - BRIDGE RAIL POSTS, SPECIAL WASHERS, PLATE WASHERS AND SPLICE BARS SHALL CONFORM TO AASHTO M 223/M 223M GRADE 345 AND SHALL BE GALVANIZED AFTER FABRICATION IN ACCORDANCE WITH AASHTO M 111.
 - ALL BOLTS AND RELATED HARDWARE SHALL CONFORM TO AASHTO M 164M, TYPE 1 BOLTS AND SHALL BE HOT DIPPED OR MECHANICALLY GALVANIZED PER SPECIFICATION.
 - PRIOR TO GALVANIZING, ALL EDGES OF STEEL SHAPES AND PLATES TO BE GROUNDED TO A MINIMUM OF 2mm RADIUS.
 - SEE STANDARD DRAWING G-1M AND G-1dM FOR ADDITIONAL DETAILS CONCERNING GUARDRAIL.
 - SEE STANDARD DRAWING SB-R6-82M FOR APPROACH RAIL DETAILS AND FOR INFORMATION RELATIVE TO SCHEDULE 1 AND SCHEDULE 11. ALL APPROACH RAIL SHALL BE HEAVY DUTY STEEL BEAM GUARDRAIL. ALSO SEE STD. DRAWING SB-R6-82M FOR HANDRAIL DETAILS (EXCEPT END DETAILS) IF HANDRAIL IS REQUIRED.
 - ALL POSTS SHALL BE SET NORMAL TO GRADE.
 - SPLICES FOR THE STEEL BEAM GUARDRAIL SHALL LAP IN THE DIRECTION OF TRAFFIC.
 - A RAILING JOINT SHALL BE PROVIDED AT EACH SUPERSTRUCTURE EXPANSION JOINT.
 - ALL FIELD CUT OR DRILLED AREAS SHALL BE COATED WITH AN APPROVED SEALANT.



RAILING ELEVATION VIEW
(SHOWN LOOKING FROM ϕ WITHOUT CURB)

REVISIONS		
No.	Remarks	Date
0	Initial submittal	

HIGHWAY SAFETY CORP.
GLASTONBURY, CT

ITEM 525.44 BRIDGE RAILING HDSB FASCIA MOUNTED STEEL TUBING TOWN OF SUNDERLAND, VERMONT RTE.: TH3, CLASS 2 F.A.S. 114, MAJOR CONNECTOR PROJECT NO. BRF 0114(2) BRIDGE NO. 14	DRAWN: MHM CHECKED: DATE: 7/31/06 SCALE: NTS HSC REFERENCE NO.: 1565 GENERAL CONTRACTOR: F.R. LAFAYETTE, INC. SUB CONTRACTOR: SIZE: D SHEET NO.: 2 of 2
--	---

RECORDED PLANS
RECEIVED
AUG 18 2006
APPROVED: X