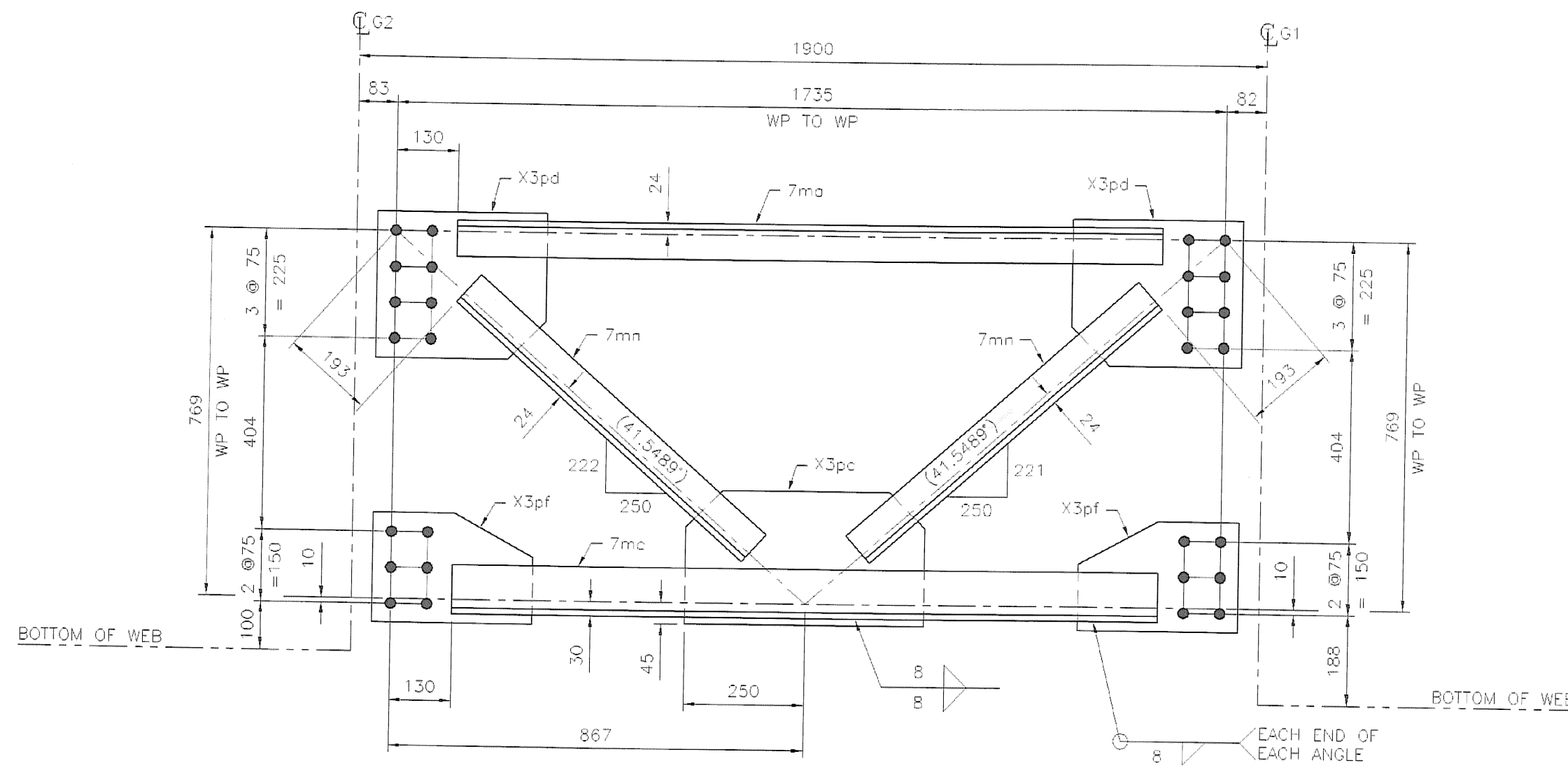
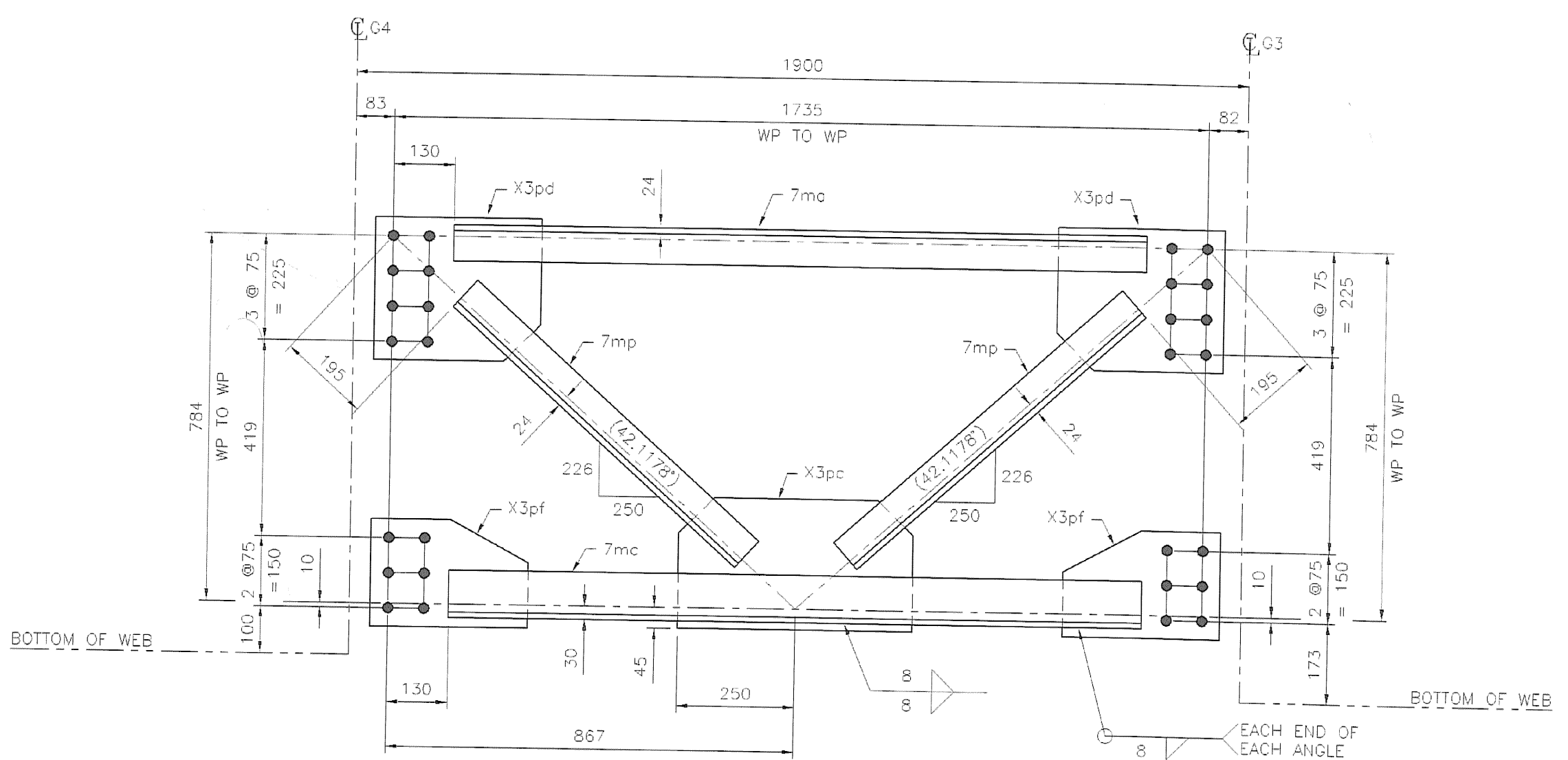


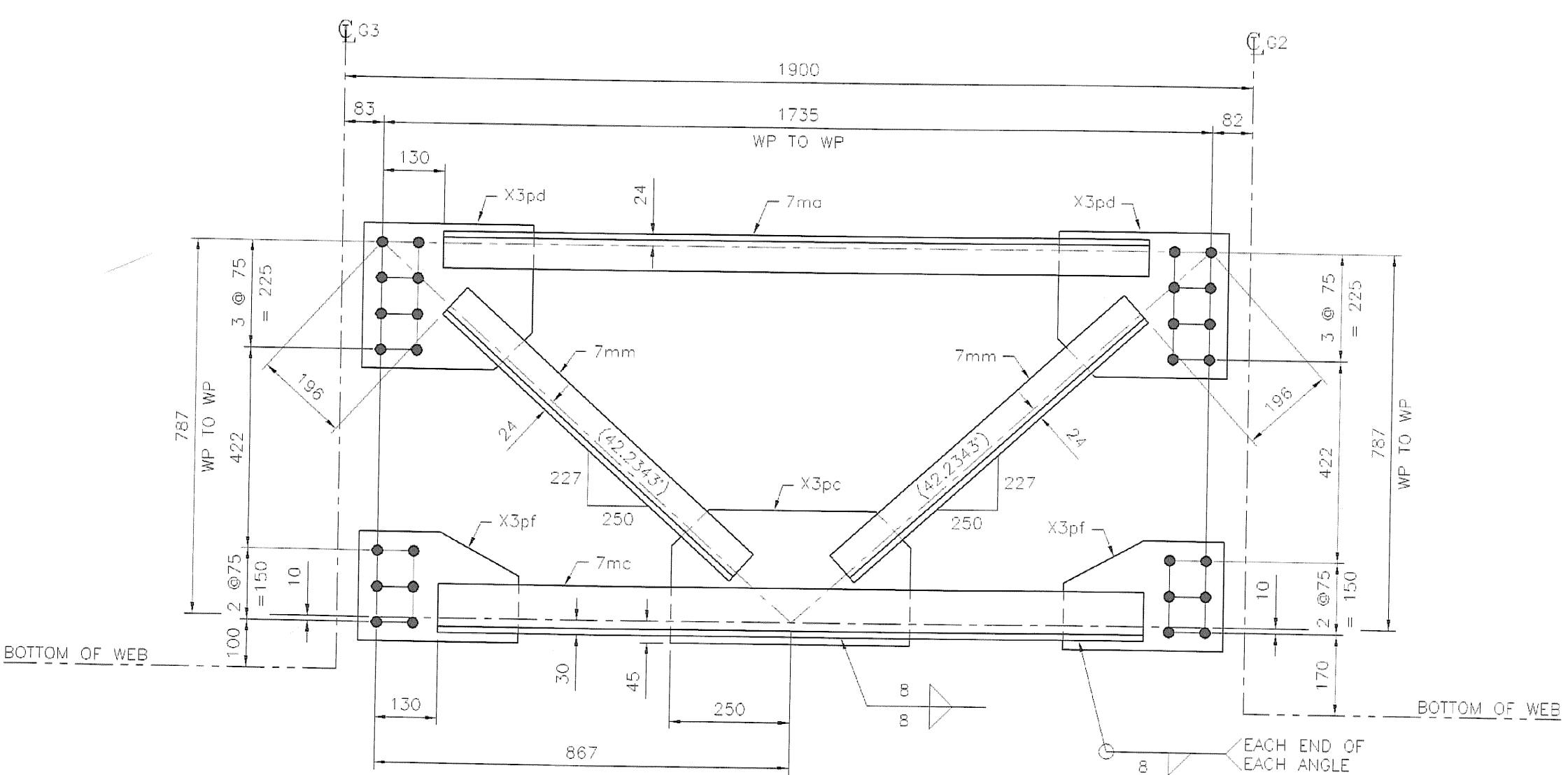
CF8A (1 REQ'D)
SCALE: 1:10



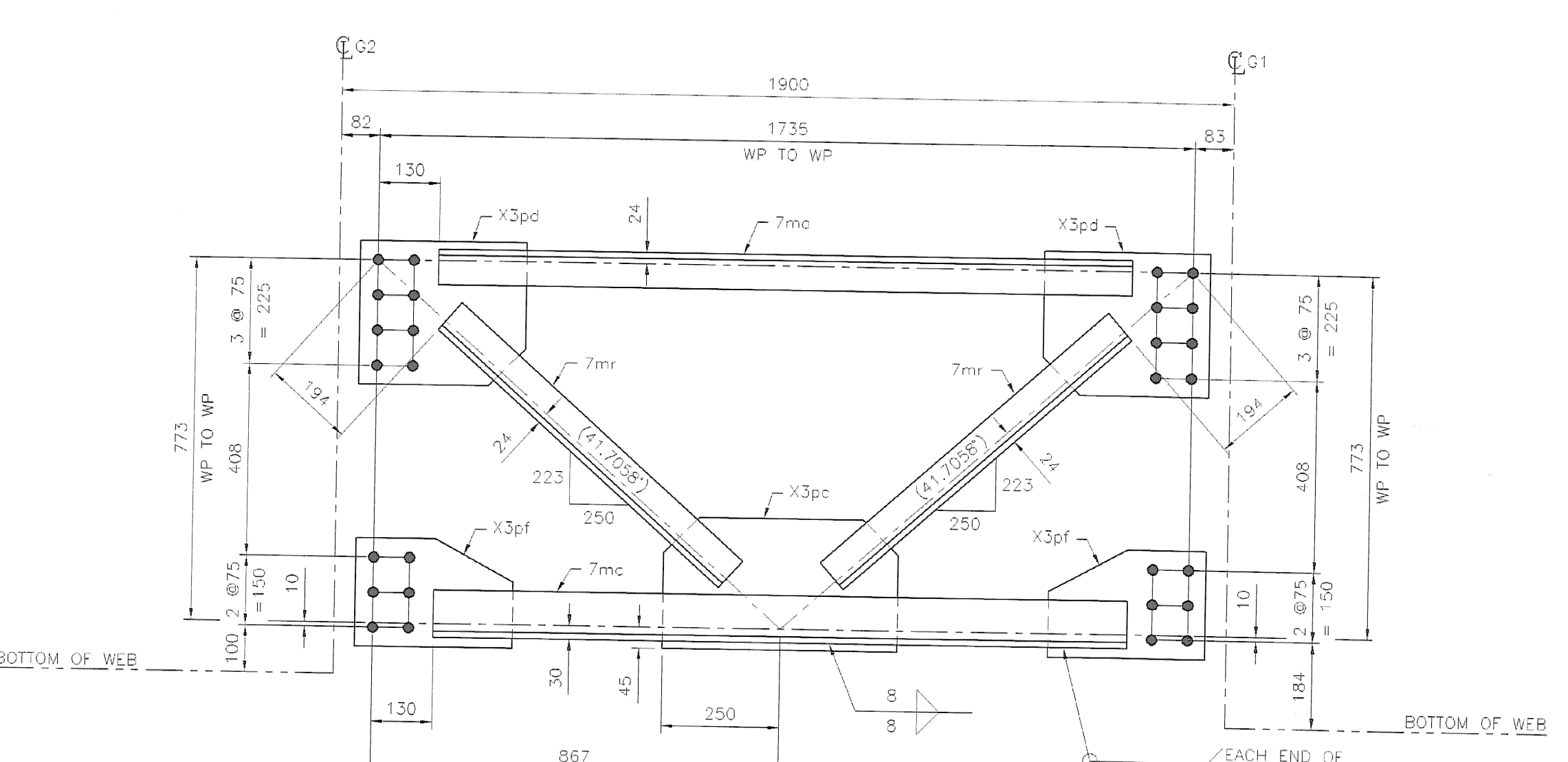
CF8B (1 REQ'D)
SCALE: 1:10



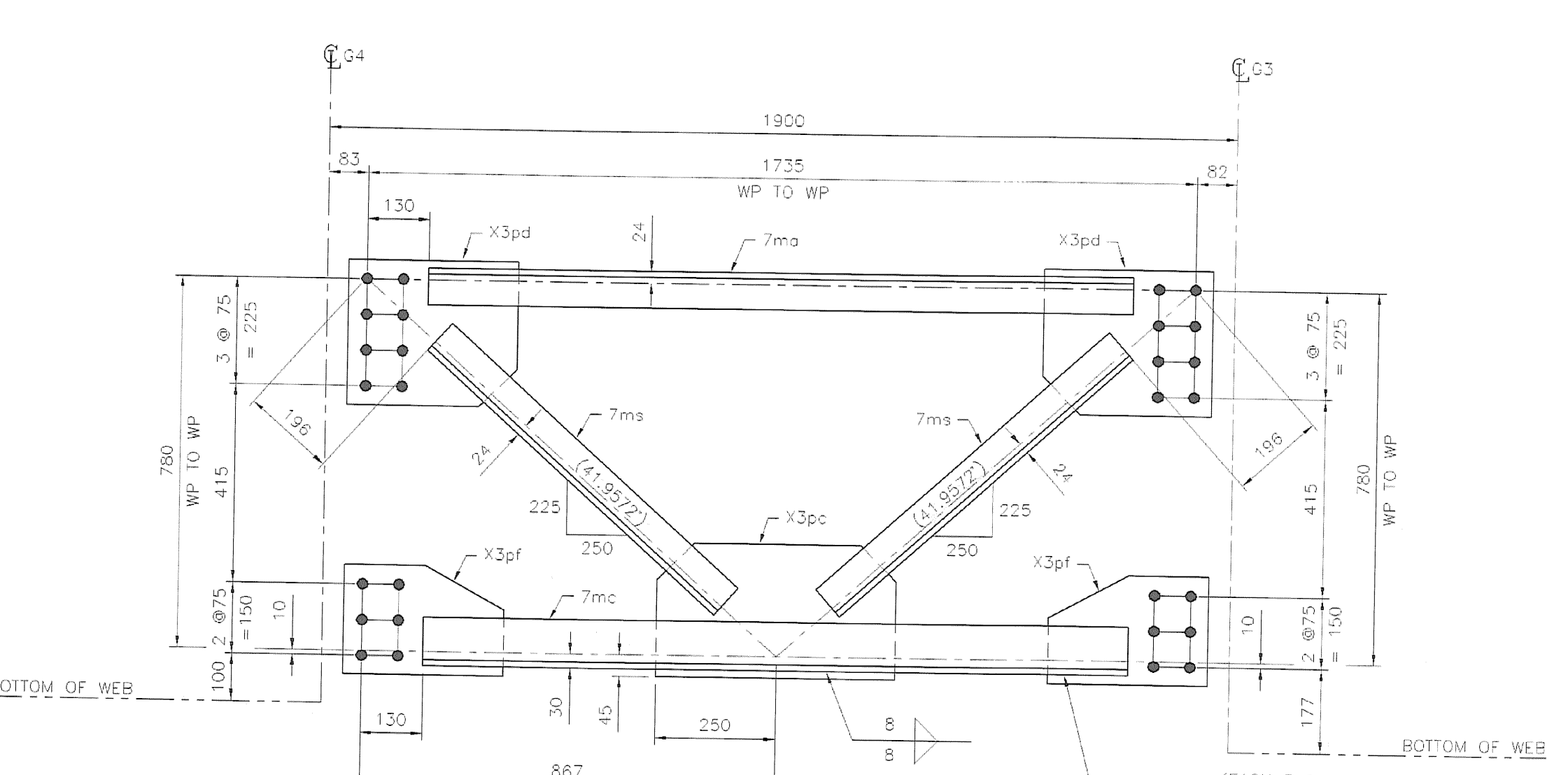
CF8C (1 REQ'D)
SCALE: 1:10



CF8D (1 REQ'D)
SCALE: 1:10



CF8E (1 REQ'D)
SCALE: 1:10



CF8G (1 REQ'D)
SCALE: 1:10

SHOP BILL									
LINE	MARK	NUMBER	SECTION	FINISHED LENGTH	ITEM NO.	REMARKS	WEIGHT		
				mm			kg		
1	CF8A	1				TOTAL WEIGHT:	124		
2	7ma	1	L 76x76x13	1476		CWN	21		
3	7mc	1	L 102x102x13	1476		CWN	28		
4	7mm	2	L 76x76x13	820		CWN	23		
5	X3pc	1	PL 13x280	500			14		
6	X3pd	2	PL 13x305	355			22		
7	X3pf	2	PL 13x230	335			16		
8									
9	CF8B	1				TOTAL WEIGHT:	124		
10	7ma	1	L 76x76x13	1476		CWN	21		
11	7mc	1	L 102x102x13	1476		CWN	28		
12	7mm	2	L 76x76x13	808		CWN	23		
13	X3pc	1	PL 13x280	500			14		
14	X3pd	2	PL 13x305	355			22		
15	X3pf	2	PL 13x230	335			16		
16									
17	CF8C	1				TOTAL WEIGHT:	124		
18	7ma	1	L 76x76x13	1476		CWN	21		
19	7mc	1	L 102x102x13	1476		CWN	28		
20	7mp	2	L 76x76x13	818		CWN	23		
21	X3pc	1	PL 13x280	500			14		
22	X3pd	2	PL 13x305	355			22		
23	X3pf	2	PL 13x230	335			16		
24									
25	CF8D	1				TOTAL WEIGHT:	124		
26	7ma	1	L 76x76x13	1476		CWN	21		
27	7mc	1	L 102x102x13	1476		CWN	28		
28	7mm	2	L 76x76x13	820		CWN	23		
29	X3pc	1	PL 13x280	500			14		
30	X3pd	2	PL 13x305	355			22		
31	X3pf	2	PL 13x230	335			16		
32									
33	CF8E	1				TOTAL WEIGHT:	124		
34	7ma	1	L 76x76x13	1476		CWN	21		
35	7mc	1	L 102x102x13	1476		CWN	28		
36	7mr	2	L 76x76x13	811		CWN	23		
37	X3pc	1	PL 13x280	500			14		
38	X3pd	2	PL 13x305	355			22		
39	X3pf	2	PL 13x230	335			16		
40									
41	CF8G	1				TOTAL WEIGHT:	124		
42	7ma	1	L 76x76x13	1476		CWN	21		
43	7mc	1	L 102x102x13	1476		CWN	28		
44	7ms	2	L 76x76x13	815		CWN	23		
45	X3pc	1	PL 13x280	500			14		
46	X3pd	2	PL 13x305	355			22		
47	X3pf	2	PL 13x230	335			16		
48									
49									
50									

ALL MATERIAL (EXCEPT BOLTS) TO BE ASTM: A709M-50W
 ALL WELDS TO BE MADE WITH ELECTRODES SERIES E70X
 OPEN HOLES ARE FOR U.S. BOLTS AND ARE TO BE FREE OF BURRS AND SCALE
 BOLTS: 7/8" M 16MM TYPE III OPEN HOLES: 24 UN PAINT: SEE GC-1

International Bridge & Iron Co.
 90 Day Street
 Newington, CT 06111

VERMONT DIV.
 SUNDERLAND BRIDGE
 FED. AID PROJ. NO.: BRP-0114 (2)
 CONTRACTOR: PETRICCA CONSTRUCTION CORP.
 ENGINEER: ROGER WHITCOMB

RECEIVED
 DRAWN BY J.V. DATE 02/16/07 CHECKED BY G.D. DATE 02/26/07
 CONTRACT SUFFIX DWG. NUMBER
 606 8

MAR 07 2007
 RESUBMITTED APPROVED BY CWC DATE 3/30/07