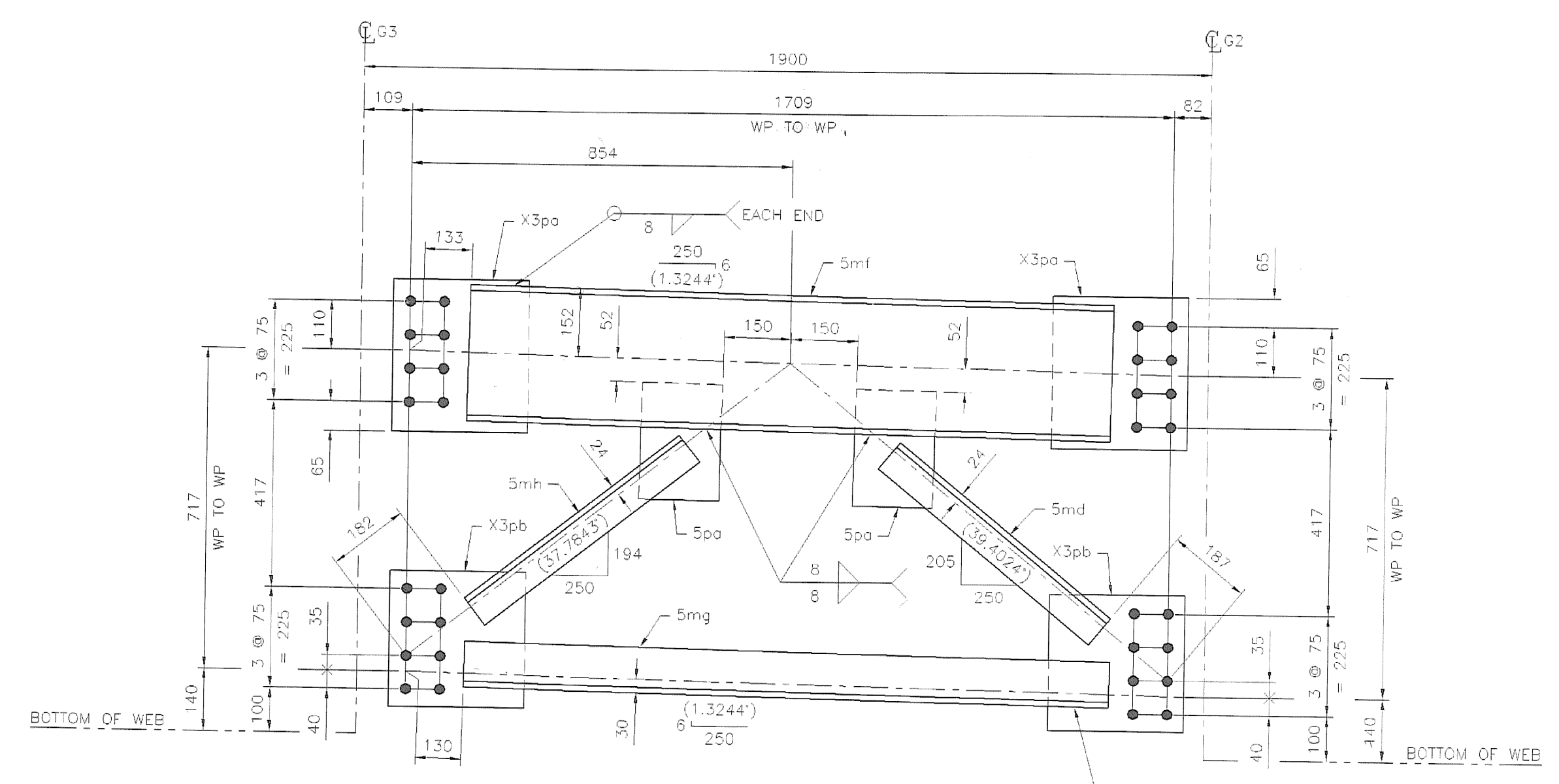
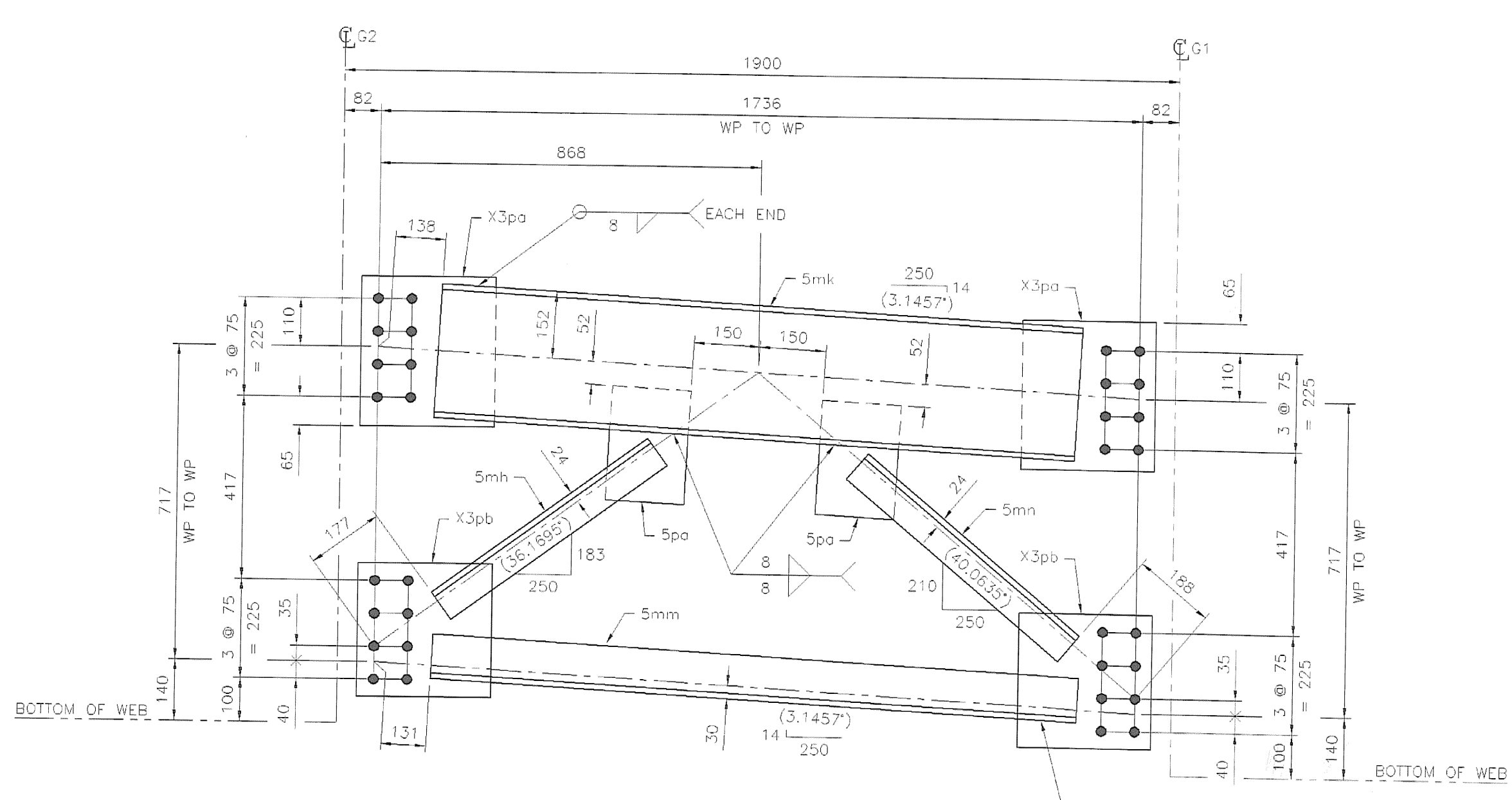


CF5A (1 REQ'D)
SCALE: 1:10
NO PAINT



CF5B (1 REQ'D)
SCALE: 1:10
NO PAINT



CF5C (1 REQ'D)
SCALE: 1:10
NO PAINT

SHOP BILL									
LINE	MARK	NUMBER	SHAPE	SECTION	FINISHED LENGTH mm	ITEM NO.	REMARKS	Weight kg	
1	CF5A	1						157	
2	5ma	1	C	310x45	1411			63	
3	5mb	1	L	102x102x13	1421			27	
4	5mc	1	L	76x76x13	590			8	
5	5md	1	L	76x76x13	615			9	
6	5pe	2	PL	13x180	260			10	
7	X3pa	2	PL	13x305	340			21	
8	X3pb	2	PL	13x305	305			19	
9									
10	CF5B	1						180	
11	5mf	1	C	310x45	1444			65	
12	5md	1	L	76x76x13	615			9	
13	5mq	1	L	102x102x13	1449			28	
14	5mh	1	L	76x76x13	605			8	
15	5pa	2	PL	13x180	260			10	
16	X3pa	2	PL	13x305	340			21	
17	X3pb	2	PL	13x305	305			19	
18									
19	CF5C	1						161	
20	5mh	1	L	76x76x13	605			8	
21	5mk	1	C	310x45	1463			66	
22	5mn	1	L	102x102x13	1474			28	
23	5mo	1	L	76x76x13	635			9	
24	5pa	2	PL	13x180	260			10	
25	X3pa	2	PL	13x305	340			21	
26	X3pb	2	PL	13x305	305			19	
27									
28									
29									
30									
31									
32									
33									
34									
35									
36									
37									
38									
39									
40									
41									
42									
43									
44									
45									
46									
47									
48									
49									
50									

ALL MATERIAL (EXCEPT BOLTS) TO BE ASTM: A709M-50W
 ALL WELDS TO BE MADE WITH ELECTRODES SERIES E70XX
 OPEN HOLES ARE FOR U.S. BOLTS AND ARE TO BE FREE OF BURRS AND SCALE
 BOLTS: 7/8" M 16MM TYPE III OPEN HOLES: 24 UN PAINT: SEE GN-1

International Bridge & Iron Co.
 90 Day Street
 Newington, CT 06111

VERMONT DOT
 SUNDERLAND BRIDGE
 FED. AID PROJ. NO.: BRP-0114 (2)
 CONTRACTOR: PETRICCA CONSTRUCTION CORP.
 ENGINEER: ROGER WHITE/OMB

For Approval/Revised/Issue to Shop END CROSSFRAMES
 Drawn by J.V. Date 02/18/07 G.D. Date 02/27/07
 Contract Suffix Dwg. Number
 606 5

RECEIVED
 CK'D BY *CWC* OK'D BY *DRP*
 MAR 07 2007
 RESUBMITTED APPROVED AS NOTED
 BY *CWC* DATE 3/30/07

17
 2/28/07