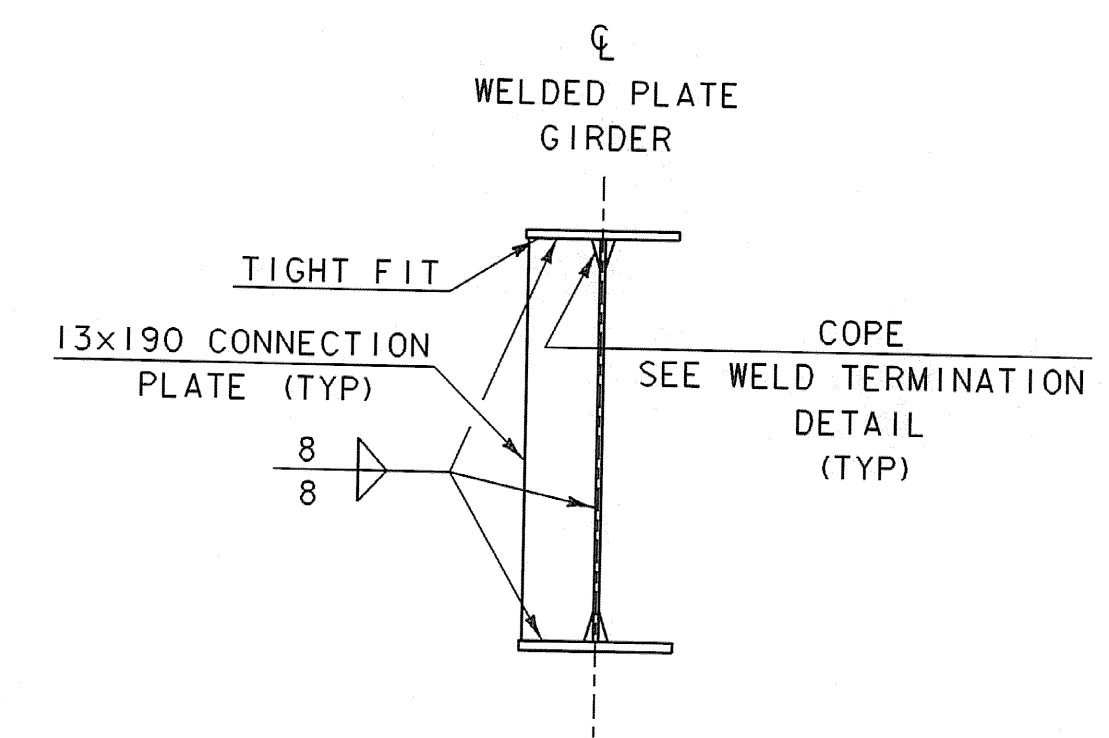


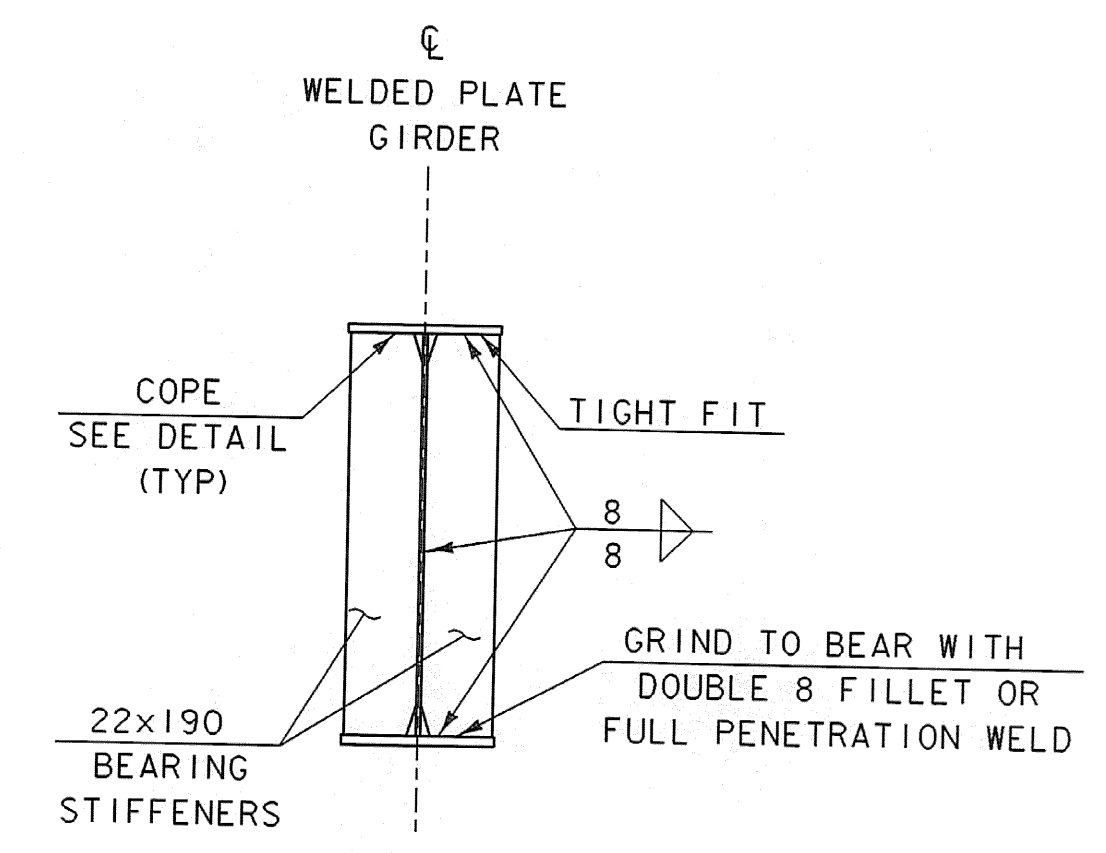
PLAN DRIP PLATE

NOTE: DRIP PLATES SHALL BE PLACED ON OUTSIDE EDGE OF THE TWO FASCIA GIRDERS ON EACH END OF THE BRIDGE, FOUR DRIP PLATES TOTAL.

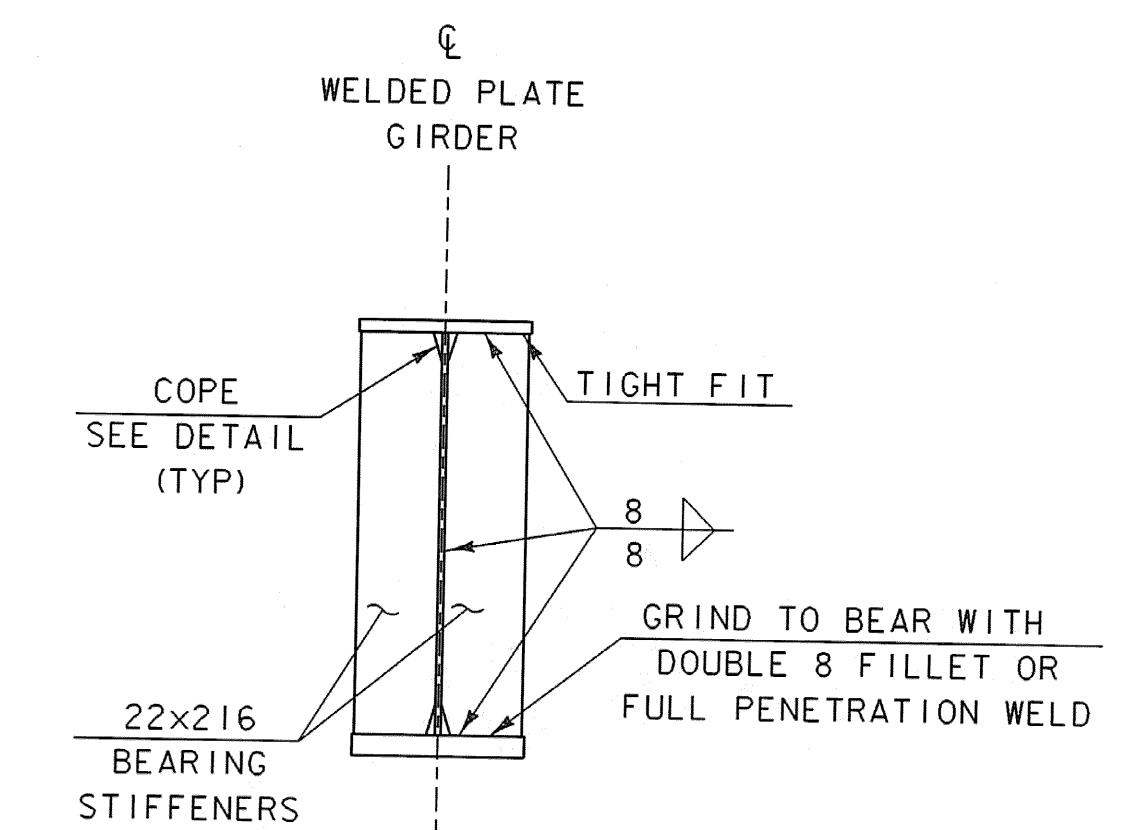


INTERMEDIATE CONNECTION PLATES FOR WELDED PLATE GIRDERS

SCALE: 1:20



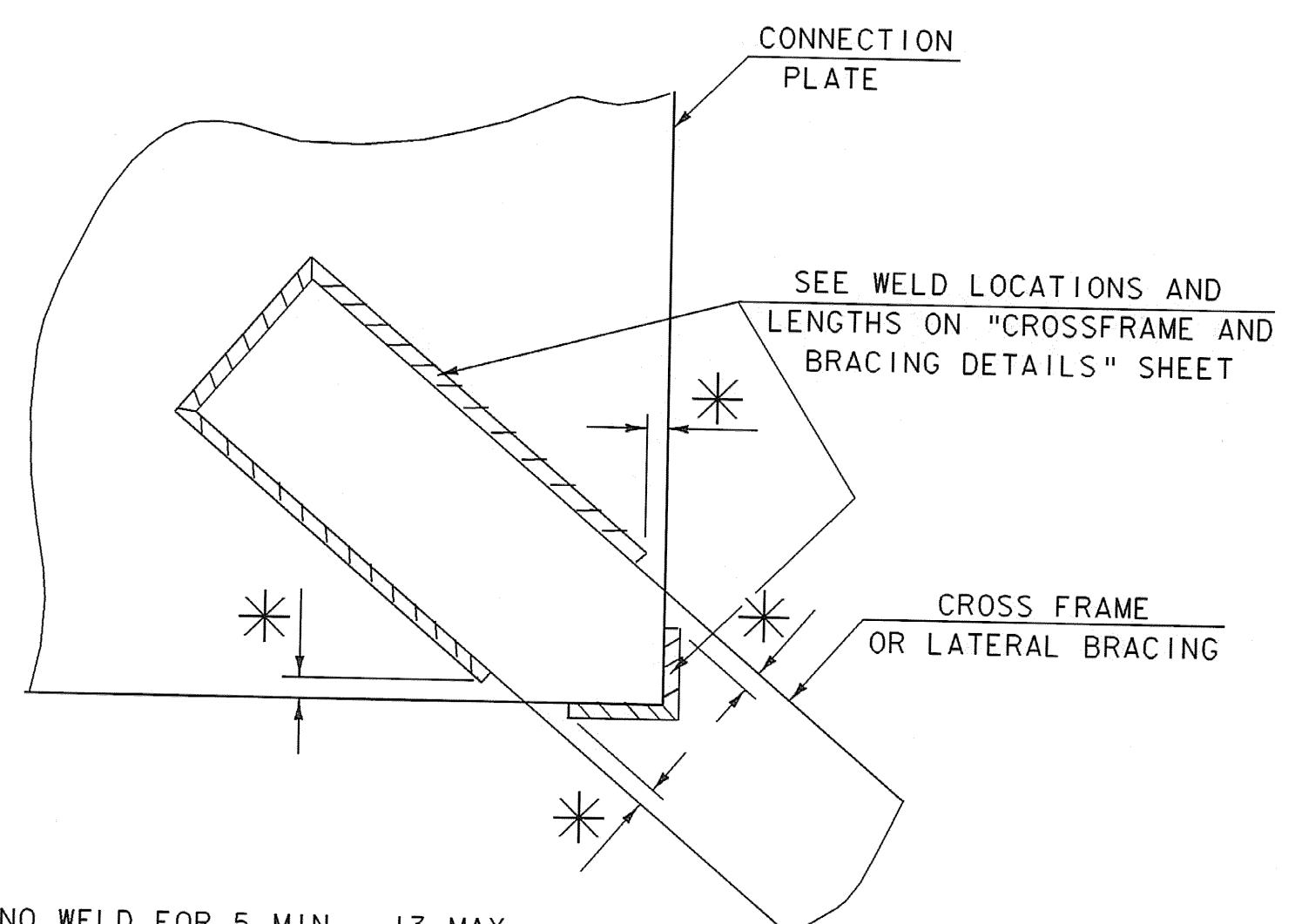
GIRDERS 1&2



GIRDERS 3&4

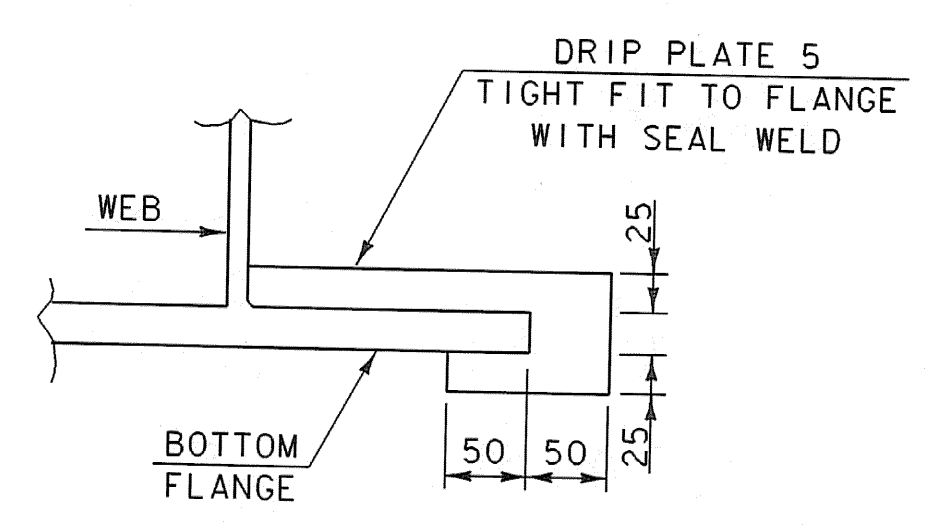
ABUTMENT BEARING STIFFENERS FOR WELDED PLATE GIRDERS

SCALE: 1:20

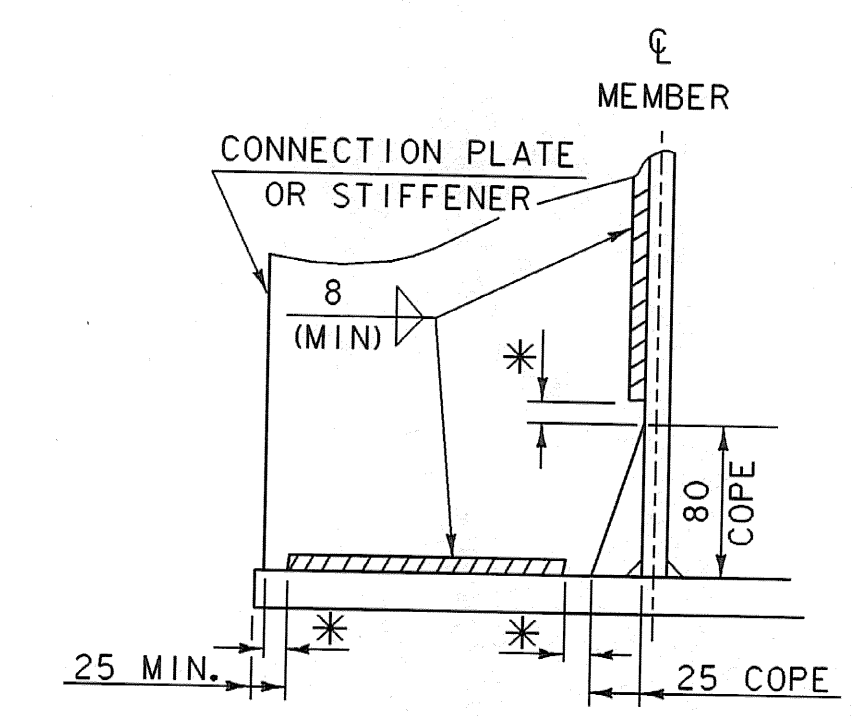


WELD LOCATION DETAIL AT CROSS FRAMES AND LATERAL BRACING

* NO WELD FOR 5 MIN., 13 MAX.



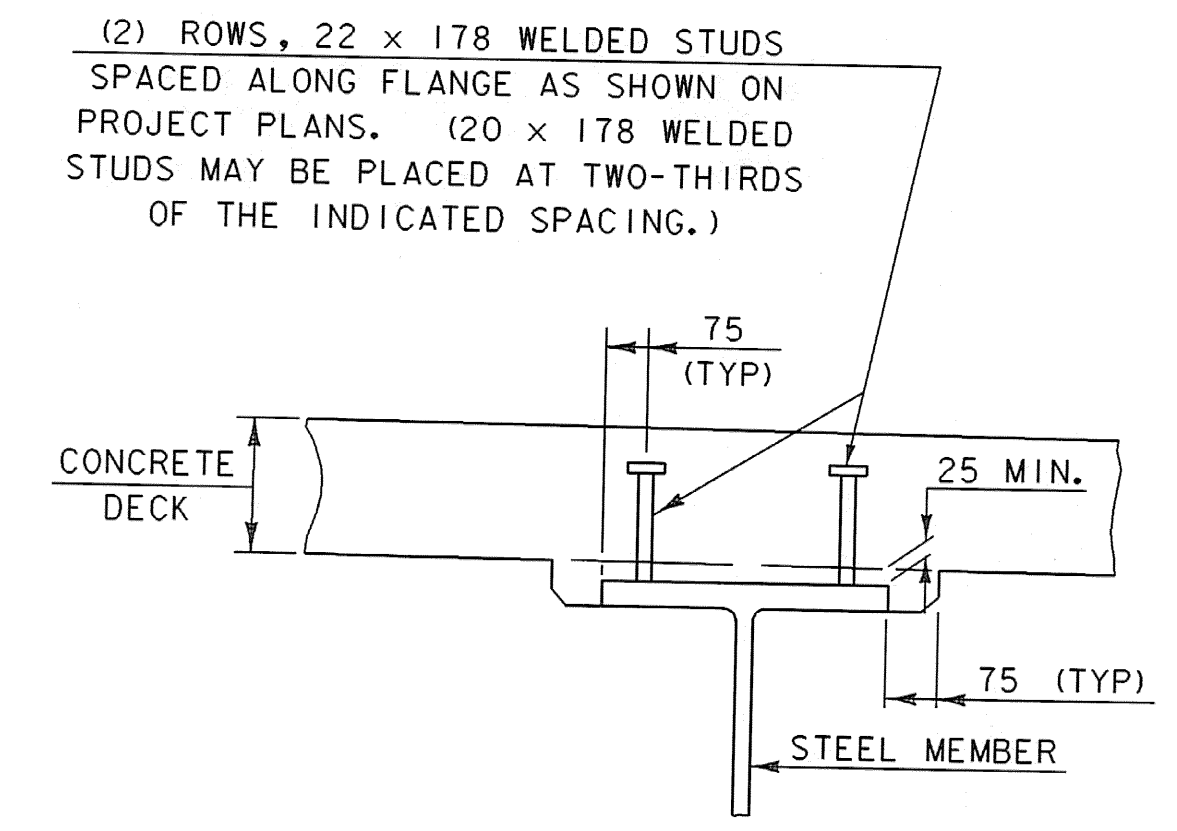
SECTION A - A



*NO WELD FOR 10 MIN. 13 MAX. (EXCEPT MUST MAINTAIN 25 MINIMUM FROM EDGE OF FLANGE.)

WELD TERMINATION AND COPING DETAILS FOR STEEL MEMBERS

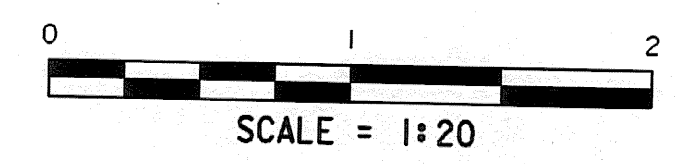
NTS



HAUNCH AND SHEAR CONNECTOR DETAILS

NTS

NOTE: THE 75 HORIZONTAL SECTION MAY BE ELIMINATED FOR FORMING SYSTEMS DESIGNED FOR THE CONSTRUCTION OF VERTICAL HAUNCHES IF APPROVED BY THE STRUCTURES ENGINEER. ANY HOLES RESULTING FROM THIS FORMING SYSTEM SHALL BE FILLED WITH MORTAR, TYPE IV.



SHEET NAME: SUPERSTRUCTURE DETAILS	
PROJECT NAME: SUNDERLAND	HIGHWAY NO.: TH 3
PROJECT NUMBER: BRF 0114(2)	BRIDGE NO.: 14
	OVER: ROARING BRANCH
FILE NAME: /PW/93J009/sj009sup.dgn	PLOT DATE: 14-DEC-2005
PROJECT MANAGER: R. R. WHITCOMB	DRAWN BY: J. GILMORE
DESIGNED BY: D. BONNEAU	IPARM NAME: sj009ssd.i
	SHEET 38 OF 67