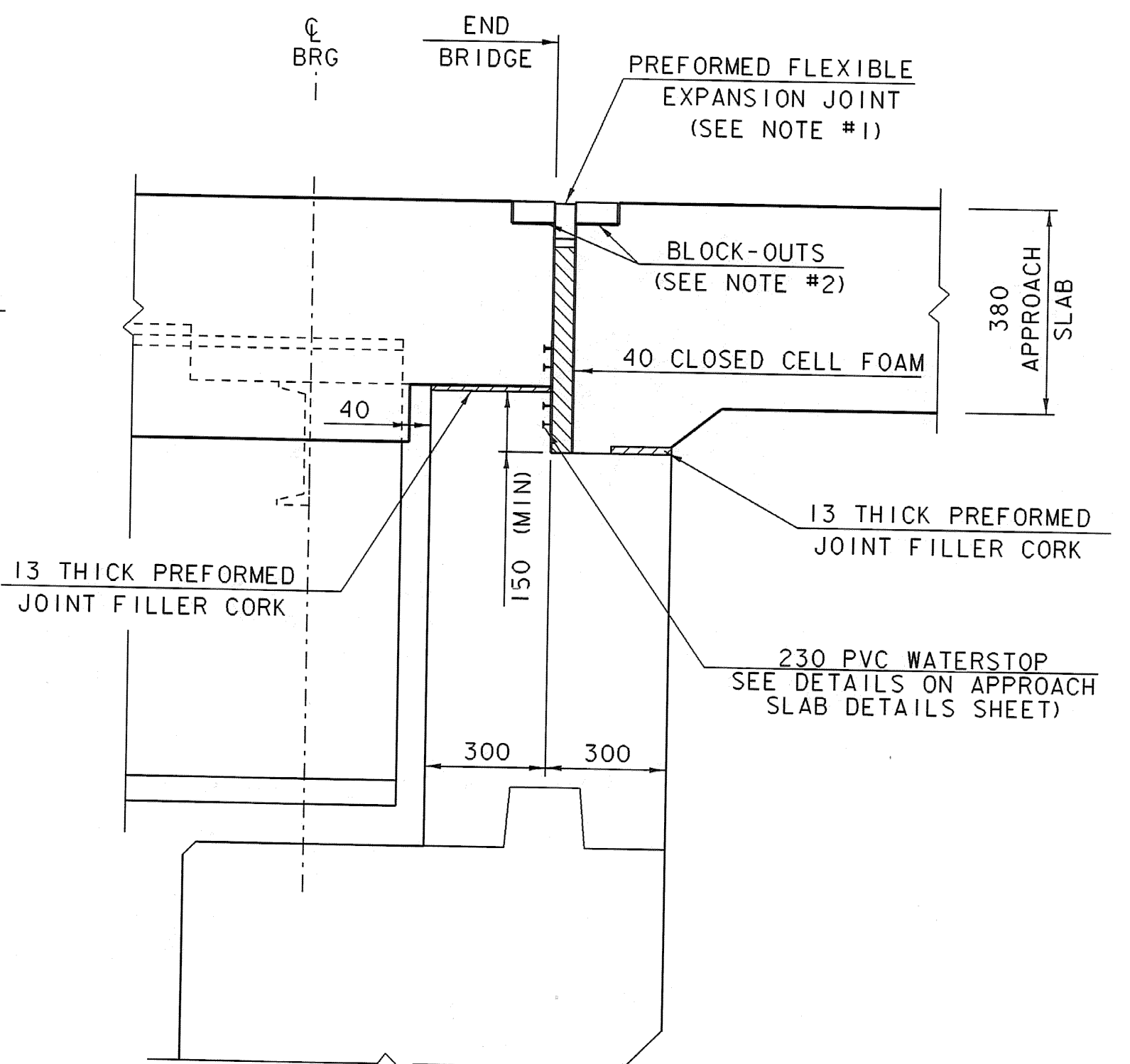


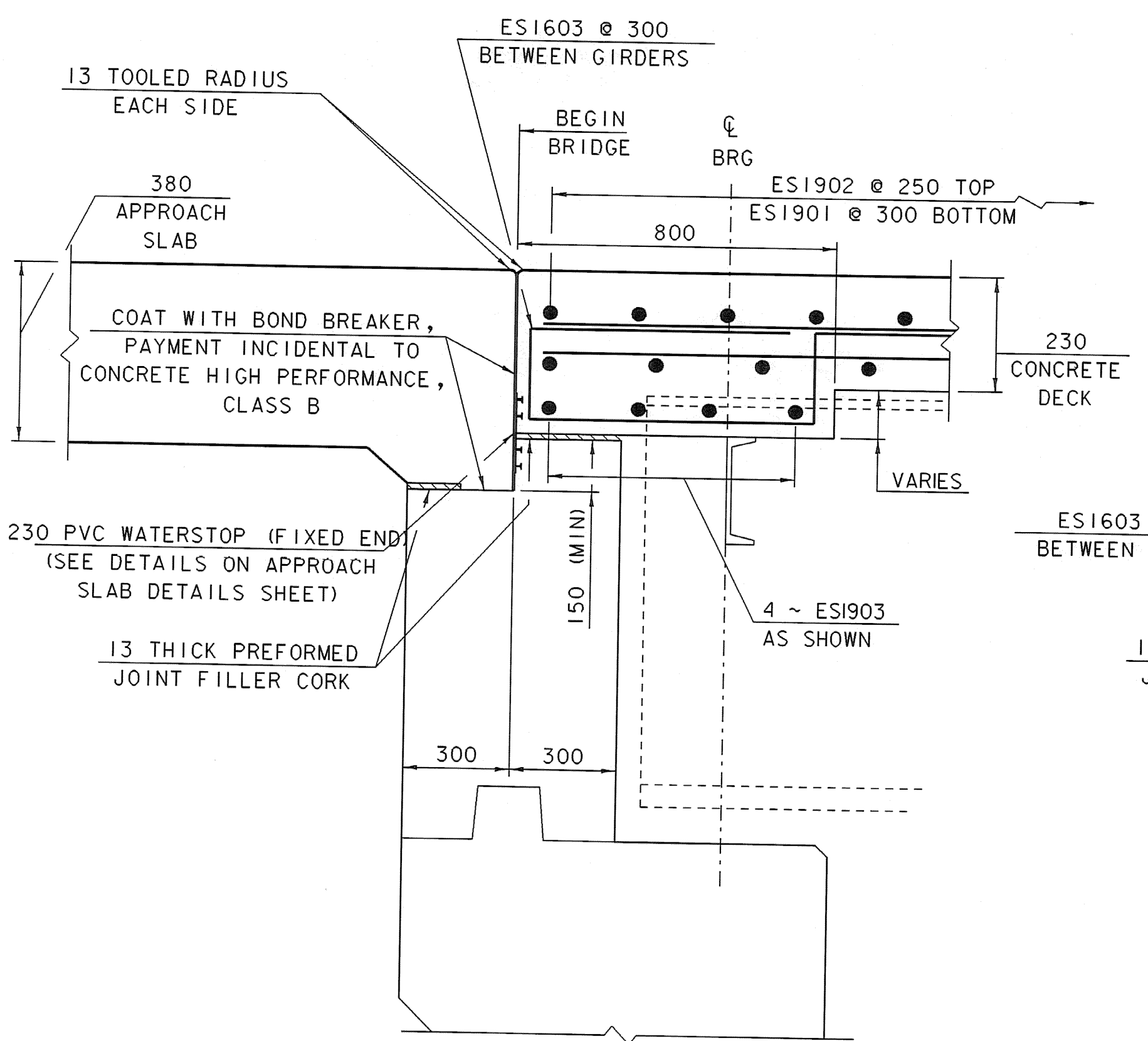
END DETAIL ABUTMENT #1
AT FASCIA
(FIXED END)



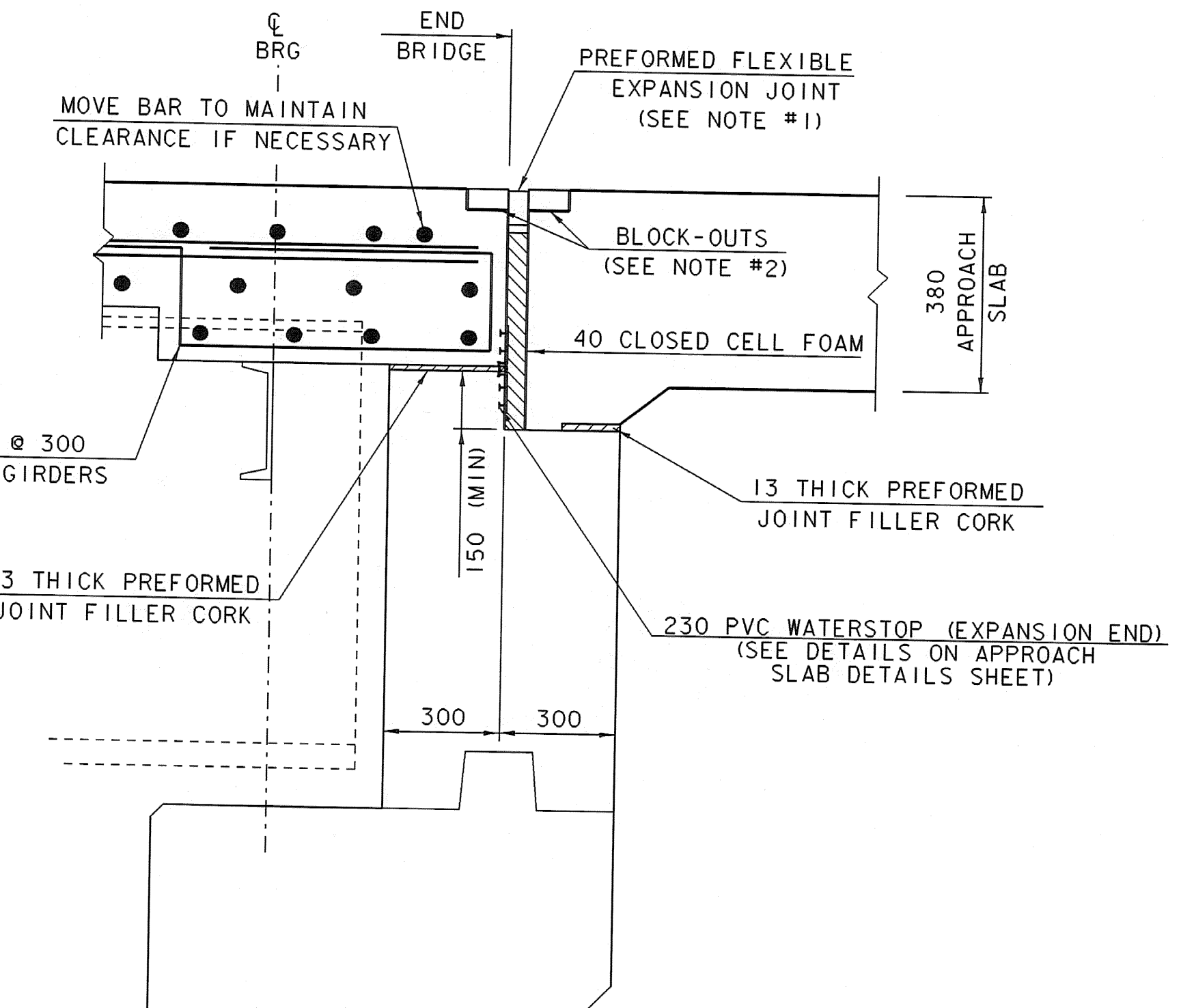
END DETAIL ABUTMENT #2
AT FASCIA
(EXPANSION END)

NOTES:

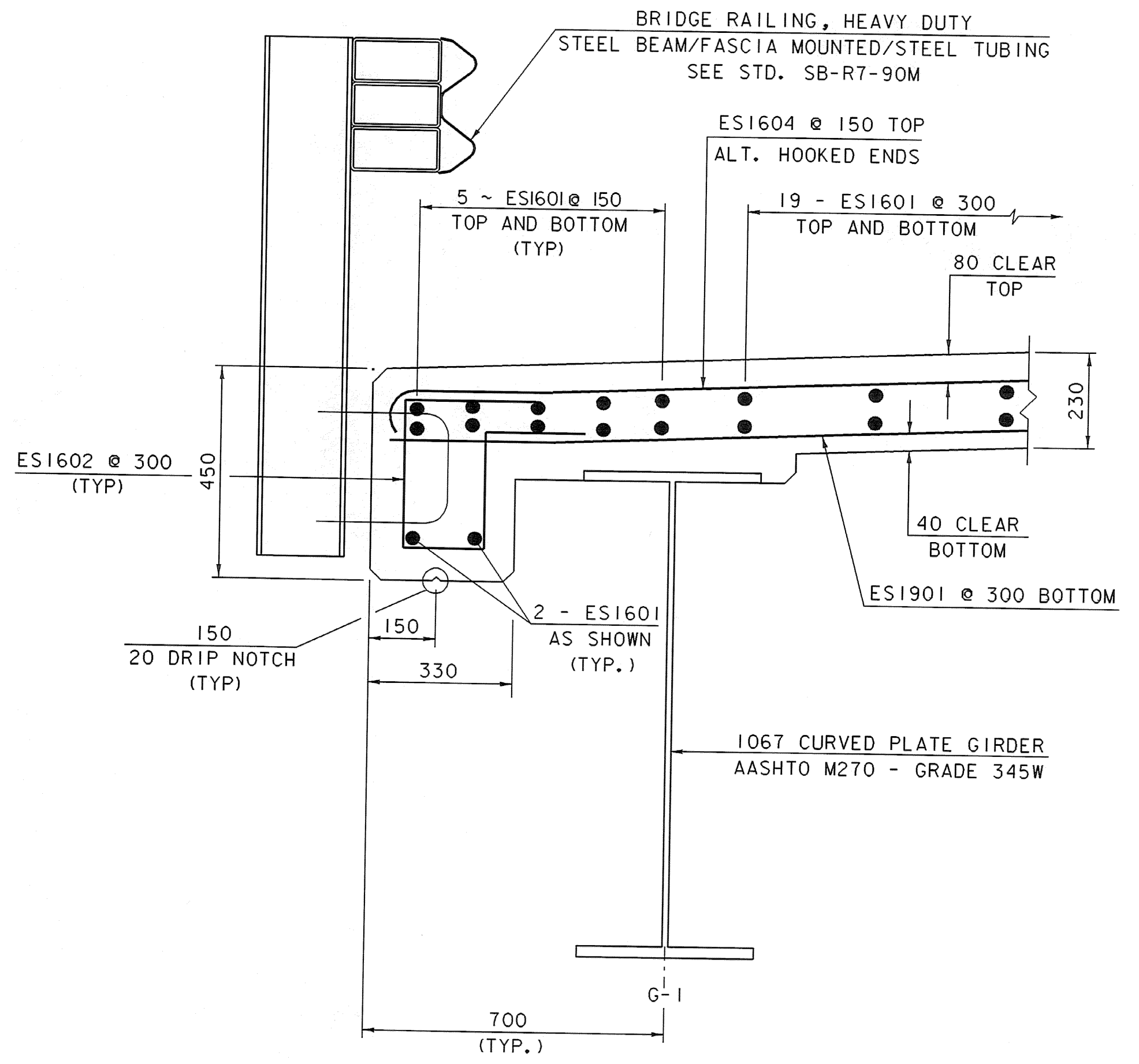
- 1) EXPANSION JOINT MATERIAL IS A PREFORMED, LOW-DENSITY, CLOSED CELL, IMPERMEABLE POLYETHYLENE FOAM ADHERED ON EACH SIDE WITH EPOXY ADHESIVE. (PRO-FLEX 2000 WITH METAZEAL BY CAPITAL SERVICES OF NY, INC., OR EQUAL)
- 2) BLOCK-OUTS FOR EXPANSION JOINT MATERIALS SHOWN AS 50 x 80 FOR THE JOINT SYSTEM SHOWN. A DIFFERENT BLOCK-OUT DIMENSION MAY BE REQUIRED BASED ON THE SUPPLIER, CHECK WITH CHOSEN SUPPLIER PRIOR TO POURING CONCRETE DECK. CLEARANCES TO REINFORCING BARS MUST BE MAINTAINED.



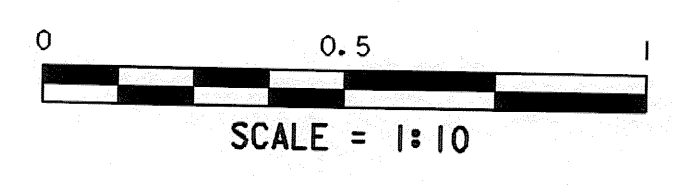
END DETAIL AT ABUT #1
(FIXED END)



END DETAIL AT ABUT #2
(EXPANSION END)



TYPICAL CURB SECTION



NOTE:

- NF = NEAR FACE
- FF = FAR FACE
- EF = EACH FACE
- ▲ = CUT TO FIT IN FIELD
- 80 CLR. UNLESS OTHERWISE SPECIFIED ON THE PLANS.

SHEET NAME: BRIDGE RAILING & DECK DETAILS		
PROJECT NAME: SUNDERLAND	HIGHWAY NO.: TH 3	
PROJECT NUMBER: BRF 0114(2)	BRIDGE NO.: 14	
	OVER: ROARING BRANCH	
FILE NAME: /PW/93J009/sj009sup.dgn	PLOT DATE: 14-DEC-2005	
PROJECT MANAGER: R. R. WHITCOMB	DRAWN BY: J. GILMORE	
DESIGNED BY: D. BONNEAU	IPARM NAME: sc009dck.1	
	SHEET 35 OF 67	