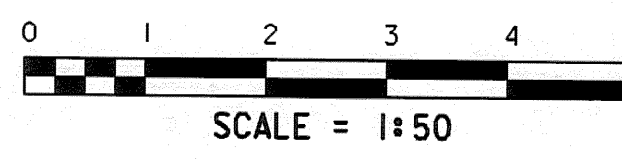
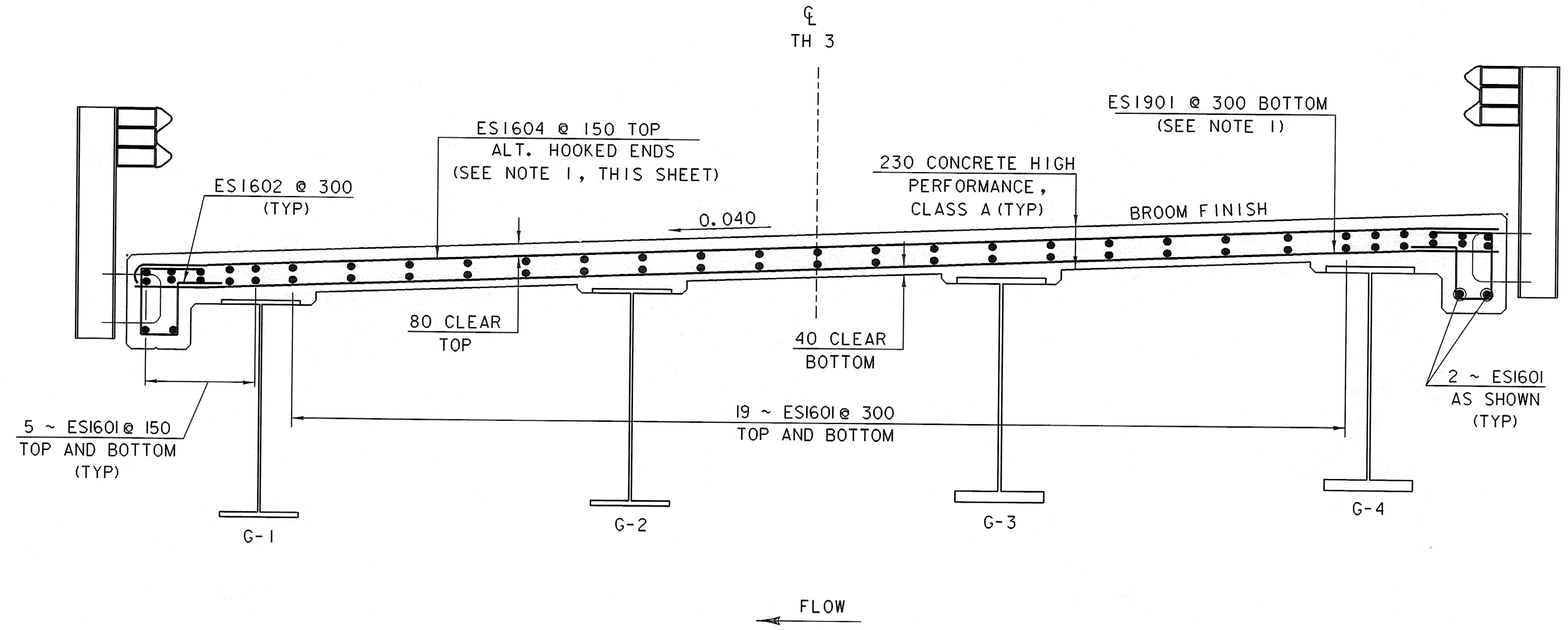
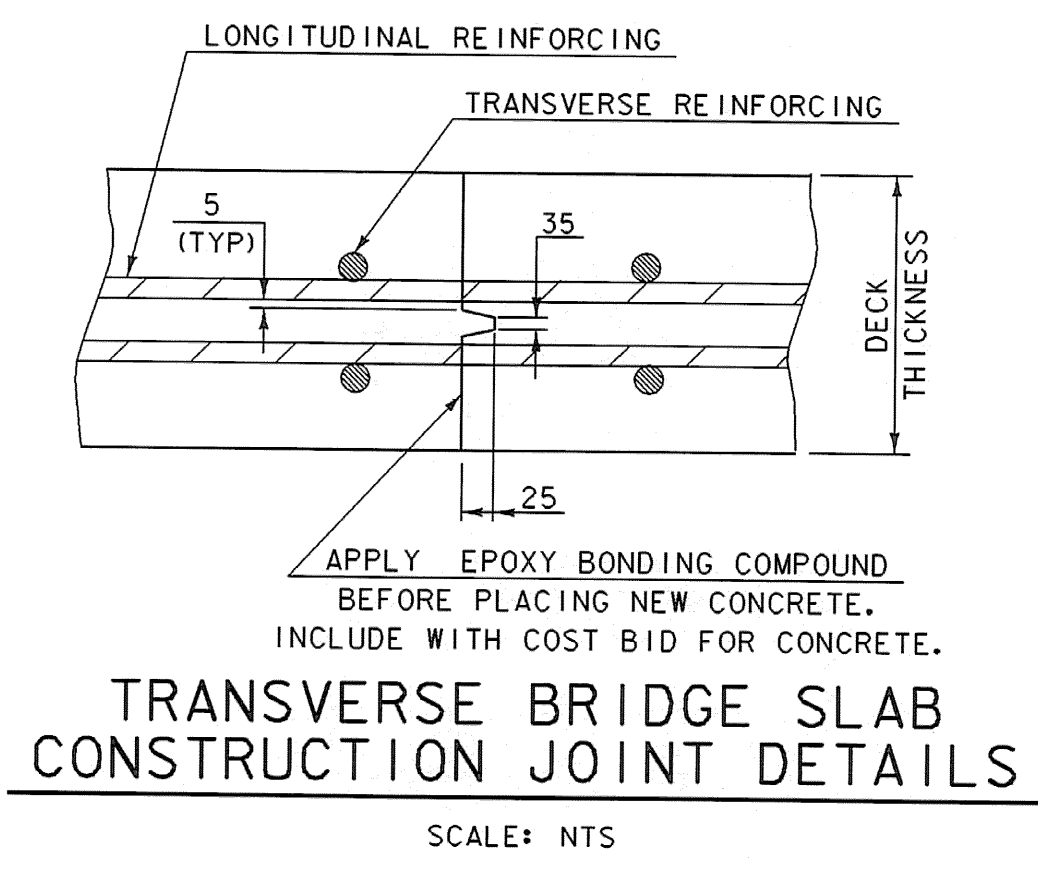


DECK PLAN

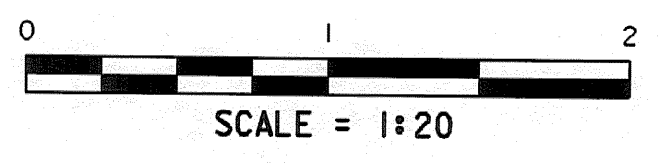


NOTES:

- 1) TRANSVERSE BARS IN DECK SHALL BE PLACED RADIALLY WITH SPACING BETWEEN BARS SET ALONG THE OUTSIDE GIRDER (G4).
- 2) SEE BRIDGE RAILING AND DECK DETAILS SHEET FOR DECK END DETAILS AND BRIDGE JOINT INFORMATION.



DECK REINFORCING STEEL LAYOUT



NOTE:

- NF = NEAR FACE
- FF = FAR FACE
- EF = EACH FACE
- ▲ = CUT TO FIT IN FIELD
- 80 CLR. UNLESS OTHERWISE SPECIFIED ON THE PLANS.

SHEET NAME: DECK PLAN		
PROJECT NAME: SUNDERLAND	HIGHWAY NO.: TH 3	
PROJECT NUMBER: BRF 0114(2)	BRIDGE NO.: 14	OVER: ROARING BRANCH
FILE NAME: /PW/93J009/sj009sup.dgn	PLOT DATE: 14-DEC-2005	
PROJECT MANAGER: R. R. WHITCOMB	DRAWN BY: J. GILMORE	
DESIGNED BY: D. BONNEAU	IPARM NAME: sj009dkp.i	SHEET 34 OF 67