

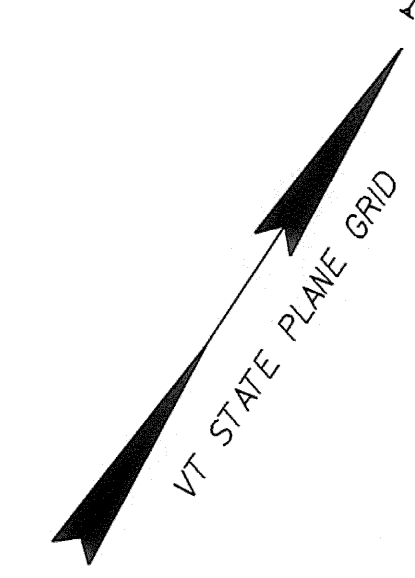
NOTES

- 1) REMOVAL OF TREES TO BE PAID FOR UNDER CLEARING AND GRUBBING
- 2) RADIUS OF CURVES LISTED IN METERS
- 3) LOCATIONS INDICATED FOR EVERGREEN TREES ARE APPROXIMATE. FINAL LOCATION TO BE DETERMINED BY ENGINEER & PROPERTY OWNER.

EVERGREEN TREES

3+664.0	(12.0 LT)
3+668.0	(15.0 LT)
3+671.5	(13.0 LT)
3+676.0	(16.0 LT)
3+682.0	(11.0 LT)
3+682.0	(16.0 LT)
3+685.5	(13.0 LT)

(N) - NEW
(R) - REMOVE
(S) - SAVE



CONSTRUCT GRAVEL DRIVES WITH PAVED APRONS
 3+564.0 LT
 3+568.0 RT (SKEWED 38.0°)
 3+593.4 RT
 4+015.0 RT

CONSTRUCT PAVED DRIVE
 3+695.0 LT (SKEWED 14.0°)

CONSTRUCT PAVED APRON
 3+520.0 RT - 3+545.0 RT

450 PIPE OPTION
 3+577.0 RT - 3+589.6 LT

375 PIPE OPTION
 3+571.2 RT - 3+576.6 RT

HEAVY DUTY STEEL BEAM GUARD RAIL
 3+611.8 - 3+625.6 LT
 3+615.1 - 3+625.8 RT
 3+655.2 - 3+664.0 RT
 3+655.4 - 3+667.2 LT

REMOVE EXISTING CONCRETE PAD
 3+585.5 LT- 3+607.5 LT

REMOVAL OF EXISTING RAILING
 3+650.0 - 3+657.5 RT

REMOVING & RESETTING FENCE
 3+568.0 LT (3 SECTIONS)

BRIDGE RAILING HEAVY DUTY STEEL BEAM / FASCIA MOUNTED / STEEL TUBING
 3+625.6 - 3+655.4 LT
 3+625.8 - 3+655.2 RT

ANCHOR FOR STEEL BEAM RAIL
 3+613.8 LT
 3+616.7 RT
 3+663.3 RT
 3+665.3 LT

RELOCATE MAILBOX, SINGLE SUPPORT
 FROM 3+606.1 RT TO 3+588.0 LT
 FROM 3+675 LT +/- TO 3+687.9 LT

CONSTRUCT SPECIAL DITCH
 3+589.6 - 3+631.8 LT
 3+600.0 - 3+625.5 RT
 3+655.9 - 3+685.0 LT

REMOVE STONE WALLS
 3+575.5 - 3+582.0 RT
 3+666.0 - 3+674.5 LT

MAINLINE CURVE DATA
 $\Delta = 89^\circ - 58' - 55.7''$ LT
 R = 83.000
 T = 82.974
 L = 130.350
 E = 34.361
 BANK = 0.040 M/M

REMOVE EXISTING DRIVE PVMT.
 REPLACE WITH TOPSOIL
 SEED AND MULCH

STATION 3+680.000
 END PROJECT
 BEGIN APPROACH

STATION 3+710.000
 END APPROACH

STATION 3+627.000
 BEGIN BRIDGE
 F.G. = 285.768

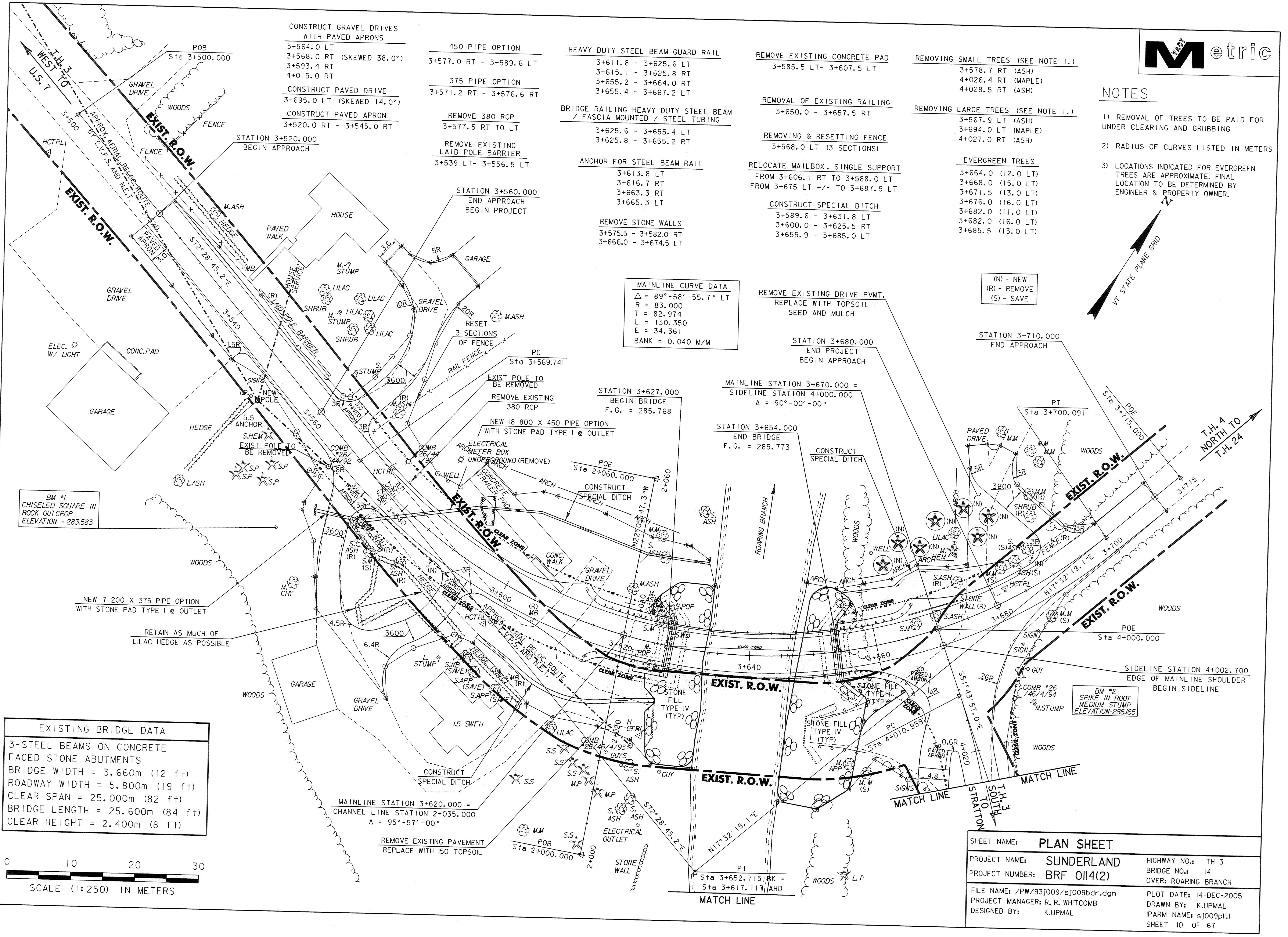
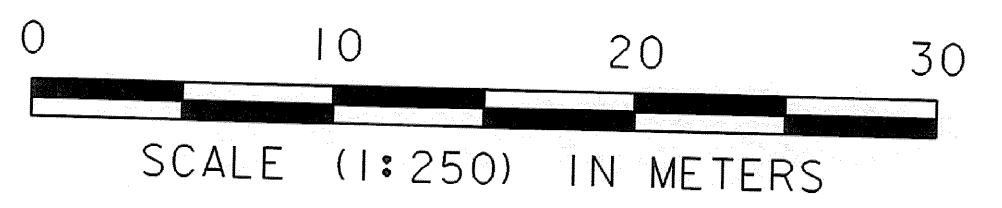
MAINLINE STATION 3+670.000 =
 SIDELINE STATION 4+000.000
 $\Delta = 90^\circ - 00' - 00''$

STATION 3+654.000
 END BRIDGE
 F.G. = 285.773

BM #1
 CHISELED SQUARE IN
 ROCK OUTCROP
 ELEVATION = 283.583

BM #2
 SPIKE IN ROOT
 MEDIUM STUMP
 ELEVATION = 286.165

EXISTING BRIDGE DATA
 3-STEEL BEAMS ON CONCRETE
 FACED STONE ABUTMENTS
 BRIDGE WIDTH = 3.660m (12 ft)
 ROADWAY WIDTH = 5.800m (19 ft)
 CLEAR SPAN = 25.000m (82 ft)
 BRIDGE LENGTH = 25.600m (84 ft)
 CLEAR HEIGHT = 2.400m (8 ft)



SHEET NAME: PLAN SHEET	
PROJECT NAME: SUNDERLAND	HIGHWAY NO.: TH 3
PROJECT NUMBER: BRF 0114(2)	BRIDGE NO.: 14
	OVER: ROARING BRANCH
FILE NAME: /PW/93j009/sj009bdr.dgn	PLOT DATE: 14-DEC-2005
PROJECT MANAGER: R. R. WHITCOMB	DRAWN BY: K.UPMAL
DESIGNED BY: K.UPMAL	IPARM NAME: sj009pil.1
	SHEET 10 OF 67