

GPS CONTROL POINTS

ALTERNATE HCTRL

STANDARD DISK STAMPED

" M 15 "
 N = 66179.823
 E = 447946.304
 ELEV. = 195.137

TO REACH THE MARK FROM THE POST OFFICE IN ARLINGTON, GO NORTH ON U.S. HIGHWAY 7 FOR 2.7 KILOMETERS TO A GRADE CROSSING AND THE MARK ON THE RIGHT. THE MARK IS A STANDARD DISK SET IN THE TOP OF A SQUARE CONCRETE MONUMENT THAT PROJECTS 15.2 CENTIMETERS. IT IS 1.7 METERS SOUTHWEST OF THE CENTER OF THE GRADE CROSSING, 12.5 METERS SOUTHWEST OF THE CENTER OF HIGHWAY 7, 2.6 METERS NORTHWEST OF THE WEST RAIL OF TRACKS, 2.3 METERS SOUTHWEST OF POWERLINE POLE NUMBER 304 AND 0.5 METERS NORTHEAST OF A METAL WITNESS POST.



ALTERNATE HCTRL

STANDARD DISK STAMPED

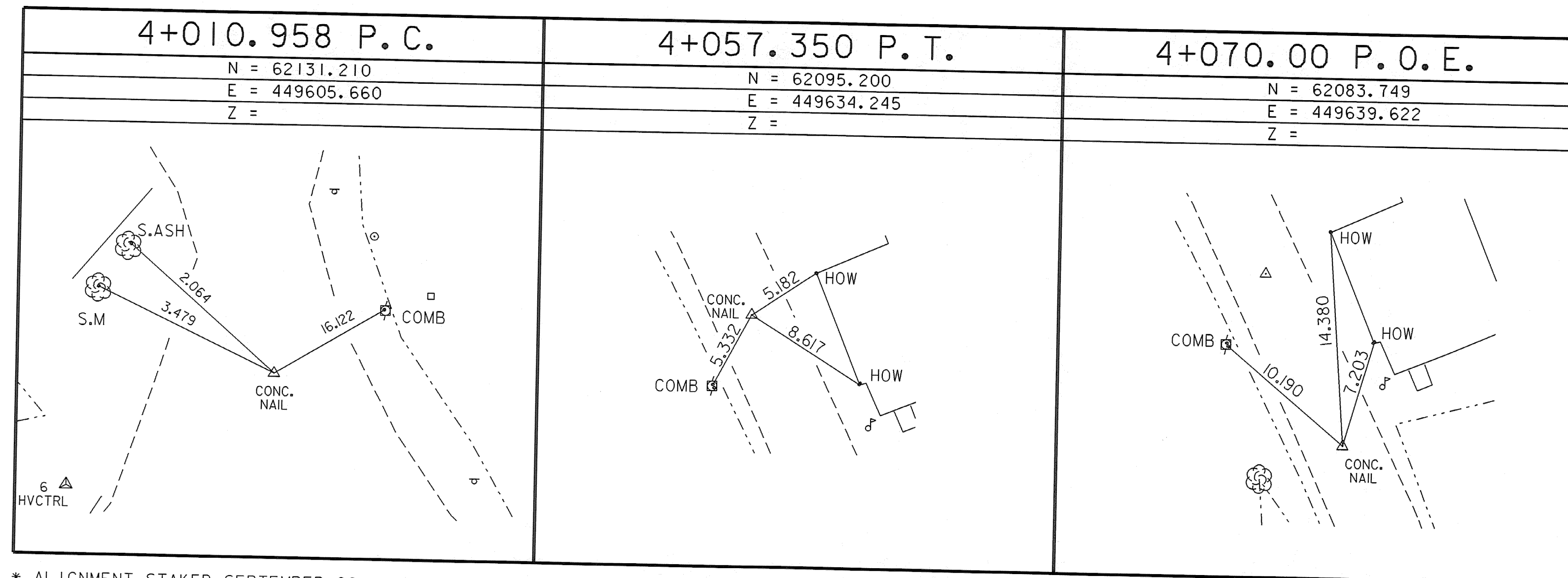
" RV 15 "
 N = 60375.510
 E = 445735.146
 ELEV. = 236.420

TO REACH THE MARK FROM THE POST OFFICE IN IN ARLINGTON, GO NORTH ON U.S. HIGHWAY 7 FOR 1.4 KILOMETERS TO A PARKING LOT ON THE RIGHT AND THE MARK IN THE SOUTH END OF A BRIDGE ABOUT 45.7 METERS TO THE EAST. THE MARK IS A MONEL METAL RIVET CEMENTED IN A DRILL HOLE IN THE ROCK BRIDGE SEAT OF THE RAILROAD BRIDGE. IT IS 2.4 METERS WEST OF THE WEST RAIL OF TRACKS, 0.7 FOOT WEST OF THE WEST EDGE OF THE STEEL FOOTING OF THE BRIDGE AND 1.7 METERS LOWER THAN THE TRACKS.

* DESCRIPTION PROVIDED BY VERMONT AGENCY OF TRANSPORTATION GEODETIC SURVEY UNIT

TRAVERSE TIES

ALIGNMENT TIES



* ALIGNMENT STAKED SEPTEMBER 28, 1999 BY L. ORVIS & R. BULLOCK

DATUM	
VERTICAL	NAVD 88
HORIZONTAL	NAD 83/92

NOTE: TIE DISTANCES ARE IN METERS

SHEET NAME: TIE SHEET	
PROJECT NAME: SUNDERLAND	HIGHWAY NO.: TH 3
PROJECT NUMBER: BRF 0114(2)	BRIDGE NO.: 14
	OVER: ROARING BRANCH
FILE NAME: /PW/93j009/sj009+tie.dgn	PLOT DATE: 14-DEC-2005
PROJECT MANAGER: R. R. WHITCOMB	DRAWN BY: G.HITCHCOCK
DESIGNED BY: K.UPMAL	IPARM NAME: sj009+t2.1
	SHEET 9 OF 67