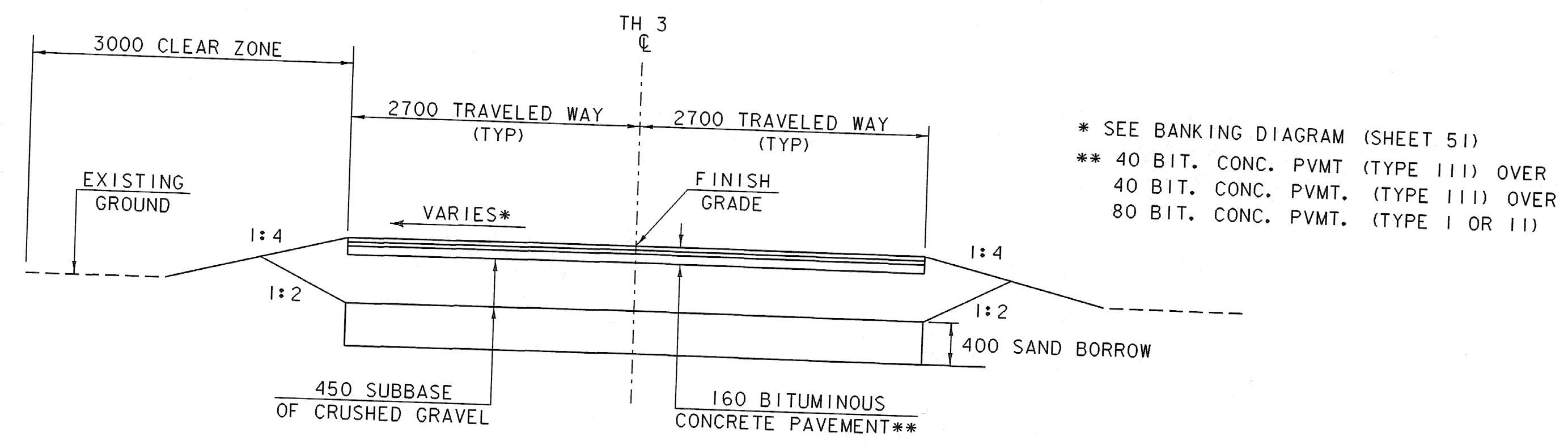
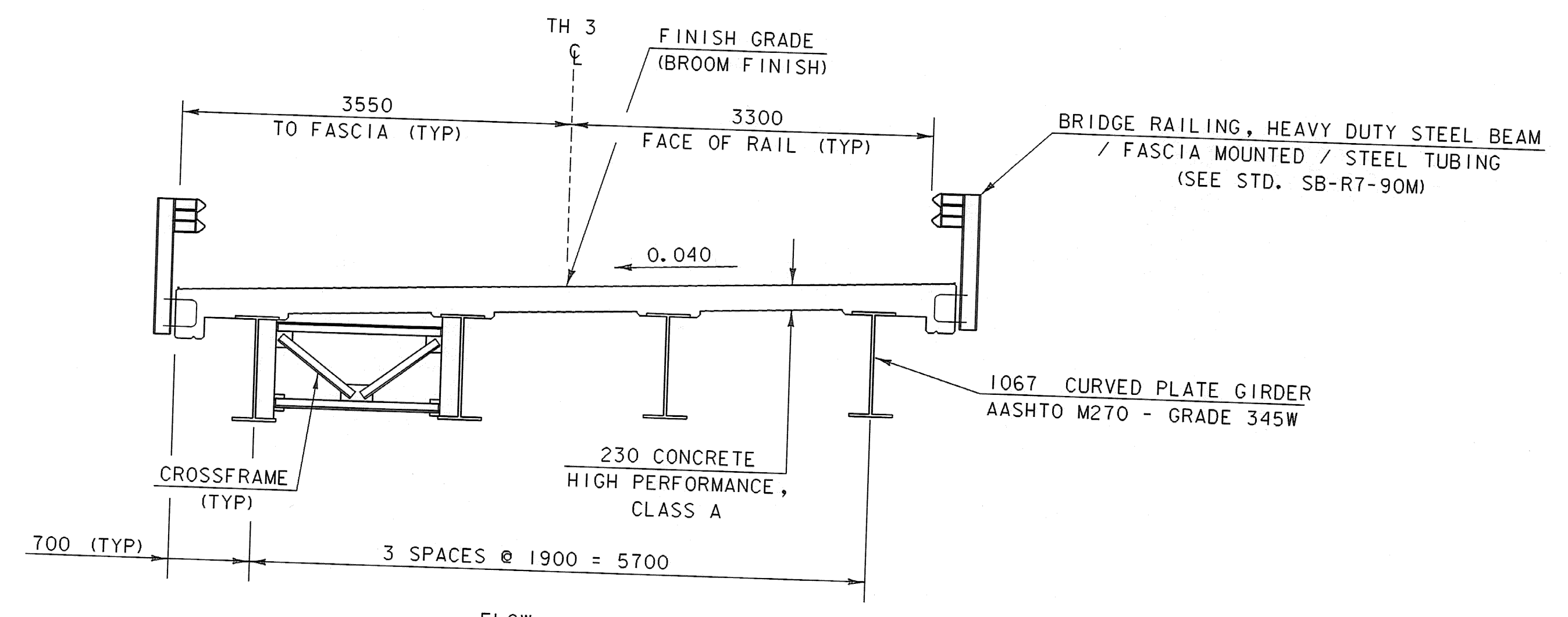


TYPICAL MAINLINE ROADWAY SECTION
SCALE 1:40

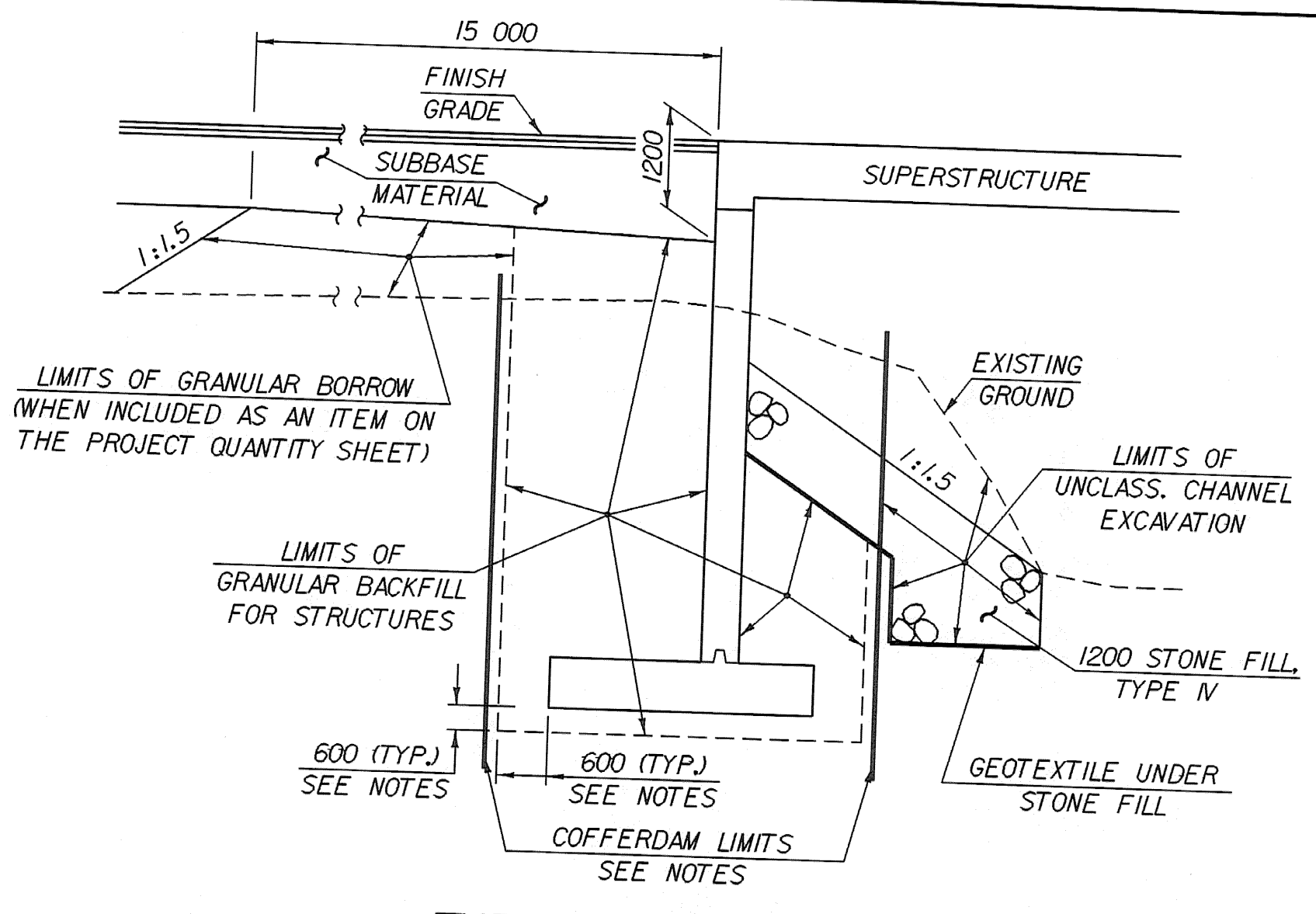


TYPICAL SIDELINE ROADWAY SECTION
SCALE 1:40



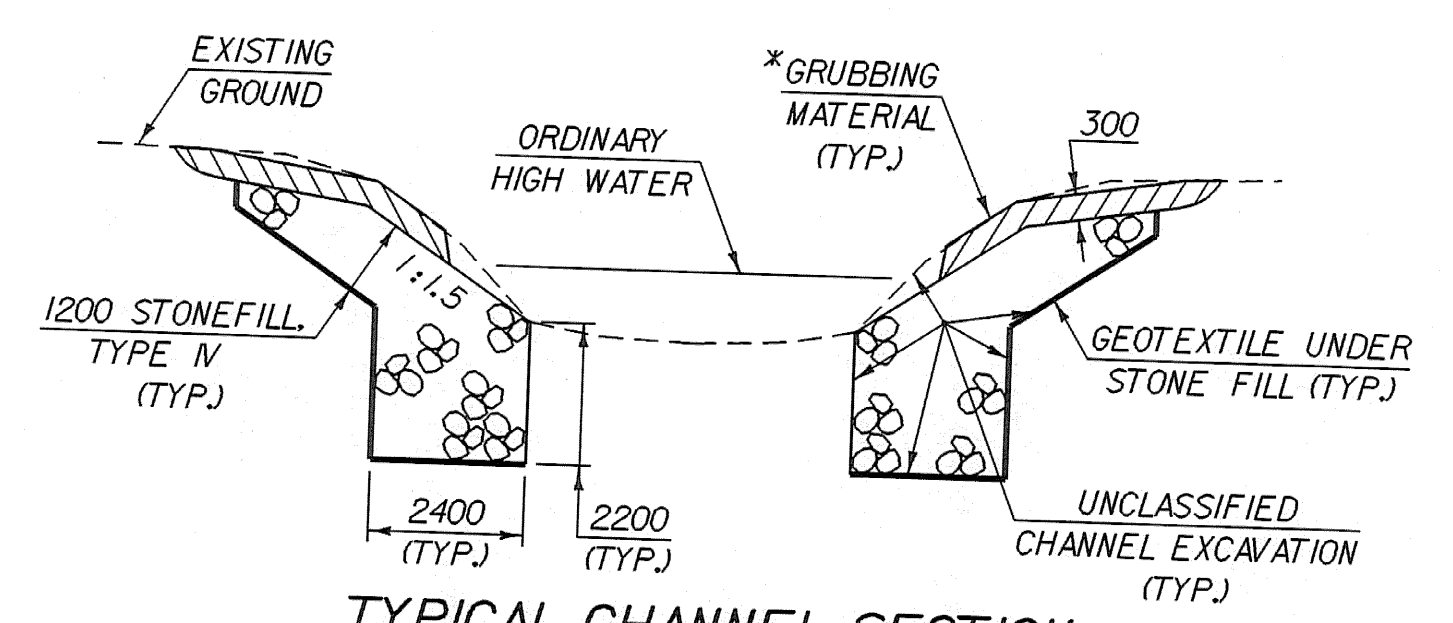
TYPICAL BRIDGE SECTION
SCALE 1:40

MATERIAL ITEM	TOLERANCE
PAVEMENT	±5 mm TOTAL THICKNESS
AGGREGATE SURFACE COURSE	± 10 mm
BASE COURSE	± 10 mm
SUBBASE	± 30 mm
SAND BORROW	± 30 mm
GRANULAR BORROW	± 30 mm



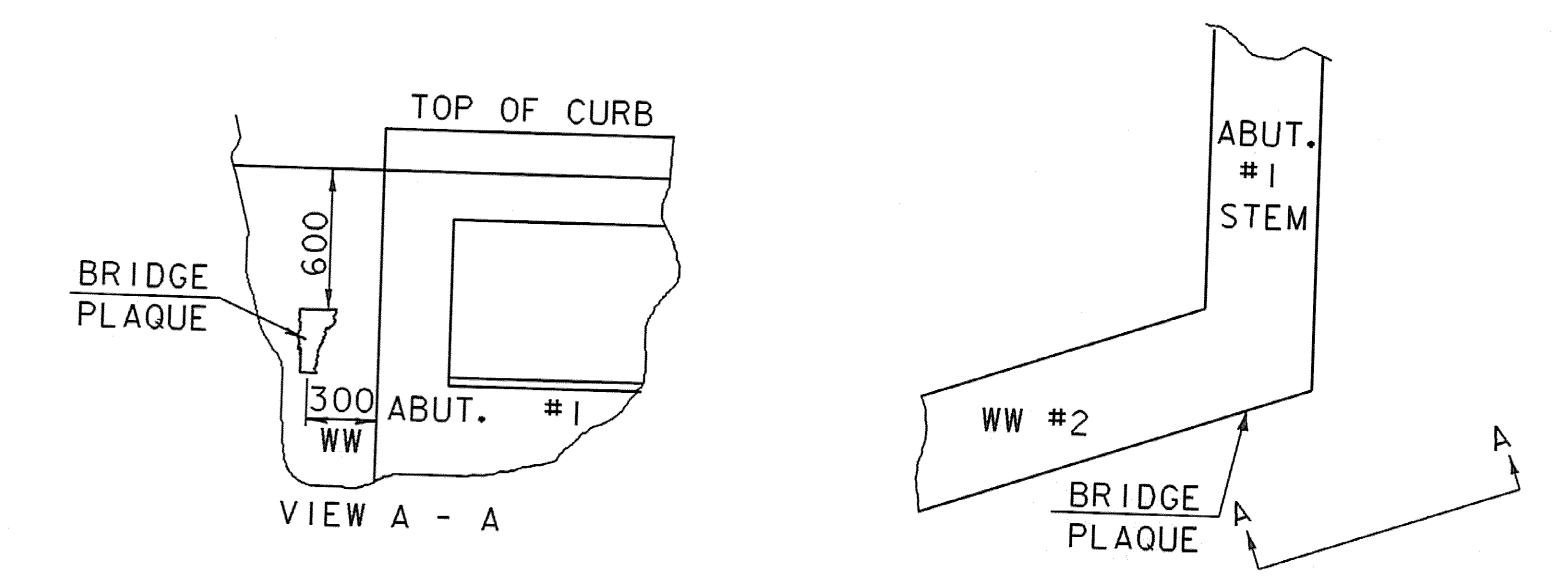
TYPICAL ABUTMENT SECTION
(NOT TO SCALE)

- NOTES**
1. COFFERDAM LIMITS TO BE DETERMINED BY THE CONTRACTOR.
 2. FOR PURPOSES OF ESTIMATING EARTHWORK QUANTITIES, THE LIMITS OF COFFERDAM HAVE BEEN ASSUMED TO BE 600 OUTSIDE THE PERIMETER OF THE FOOTING.
 3. 600 UNDERCUT AS DETERMINED NECESSARY BY THE RESIDENT ENGINEER.
 4. IF A COFFERDAM IS CONSTRUCTED WHICH IS MORE THAN THE INDICATED DISTANCE OUTSIDE THE FOOTING LIMITS, PAYMENT FOR ALL UNCLASSIFIED CHANNEL EXCAVATION INCLUDING THAT PORTION WHICH IS INSIDE THE COFFERDAM BUT OUTSIDE THE COFFERDAM LIMITS SHOWN WILL BE MADE AT THE CONTRACT UNIT PRICE FOR UNCLASSIFIED CHANNEL EXCAVATION.



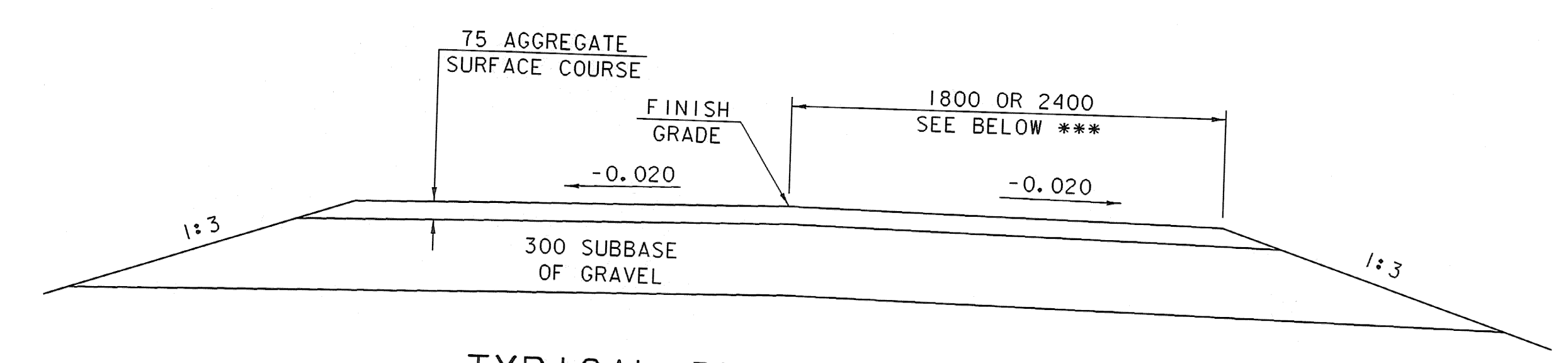
TYPICAL CHANNEL SECTION
(NOT TO SCALE)

* GRUBBING MATERIAL SHALL NOT BE PLACED ON THE STONE FILL IN THE AREA UNDER THE BRIDGE. WHENEVER CHANNEL SLOPE INTERSECTS ROADWAY SUBBASE, GRUBBING MATERIAL SHALL BEGIN AT THE BOTTOM OF SUBBASE.



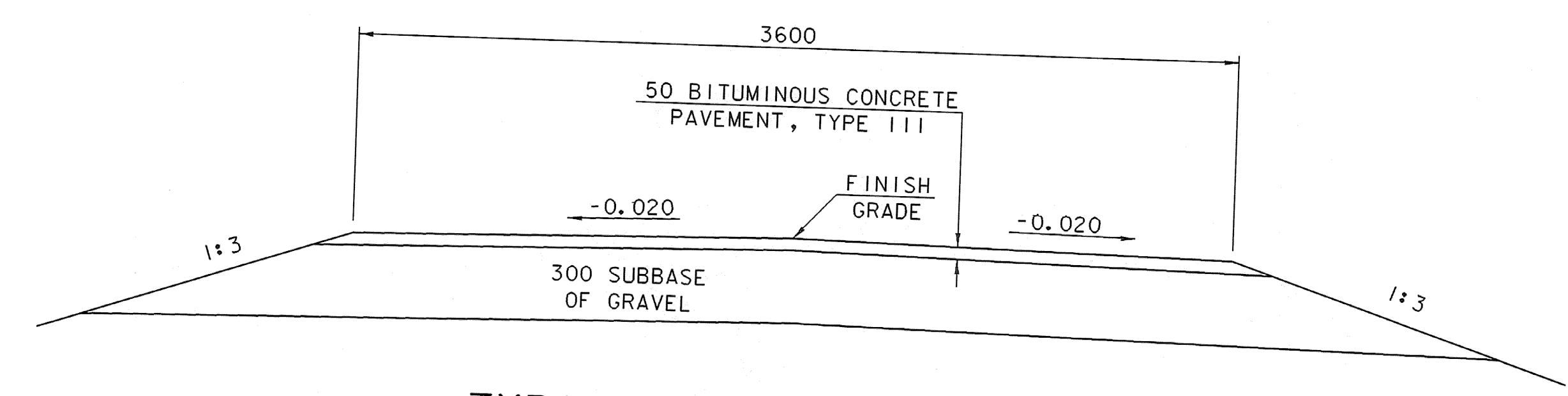
LOCATE BRIDGE PLAQUE PLAN

THE BRIDGE PLAQUE WILL BE SUPPLIED BY THE AGENCY OF TRANSPORTATION AND SHALL BE INSTALLED BY THE CONTRACTOR AT ABUTMENT #1 ON THE RIGHT SIDE AS SHOWN OR AS DIRECTED BY THE ENGINEER. (DETAILS ABOVE ARE NOT MEANT TO BE SITE SPECIFIC.)



TYPICAL DRIVE SECTION
SCALE 1:20

- *** 1800 FOR DRIVES AT
3+564.0 LT
3+568.0 RT
3+593.4 RT
2400 FOR DRIVE AT
4+010.0 RT



TYPICAL DRIVE SECTION
SCALE 1:20

DRIVE AT 3+695.0 LT

SHEET NAME: TYPICAL DETAIL SHEET	
PROJECT NAME: SUNDERLAND	HIGHWAY NO.: TH 3
PROJECT NUMBER: BRF 0114(2)	BRIDGE NO.: 14
FILE NAME: /PW/93J009/sj009+yp.dgn	OVER: ROARING BRANCH
PROJECT MANAGER: R. R. WHITCOMB	PLOT DATE: 14-DEC-2005
DESIGNED BY: K. UPMAL	DRAWN BY: K. UPMAL
	IPARM NAME: sj009+yp.1
	SHEET 3 OF 67