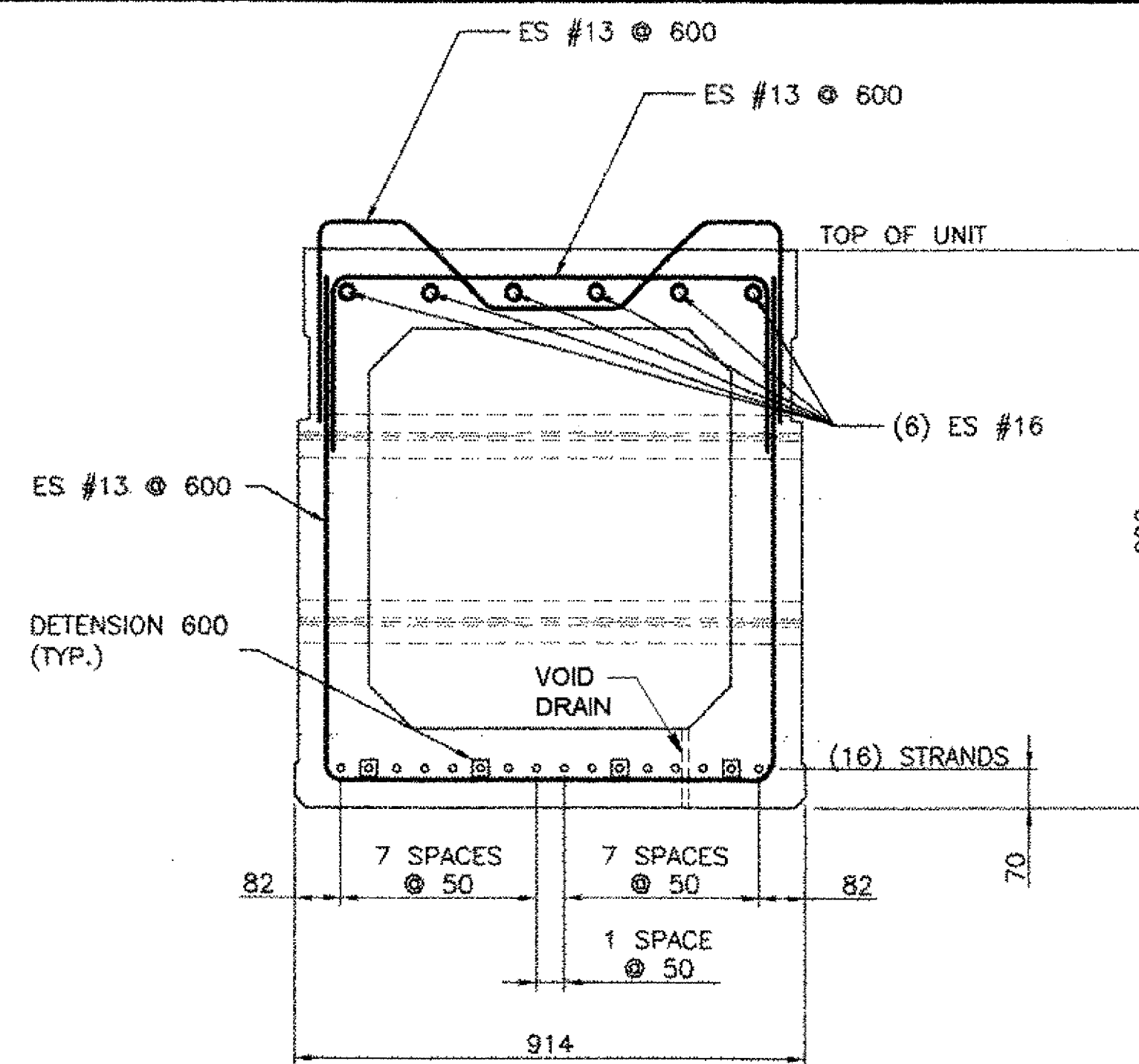
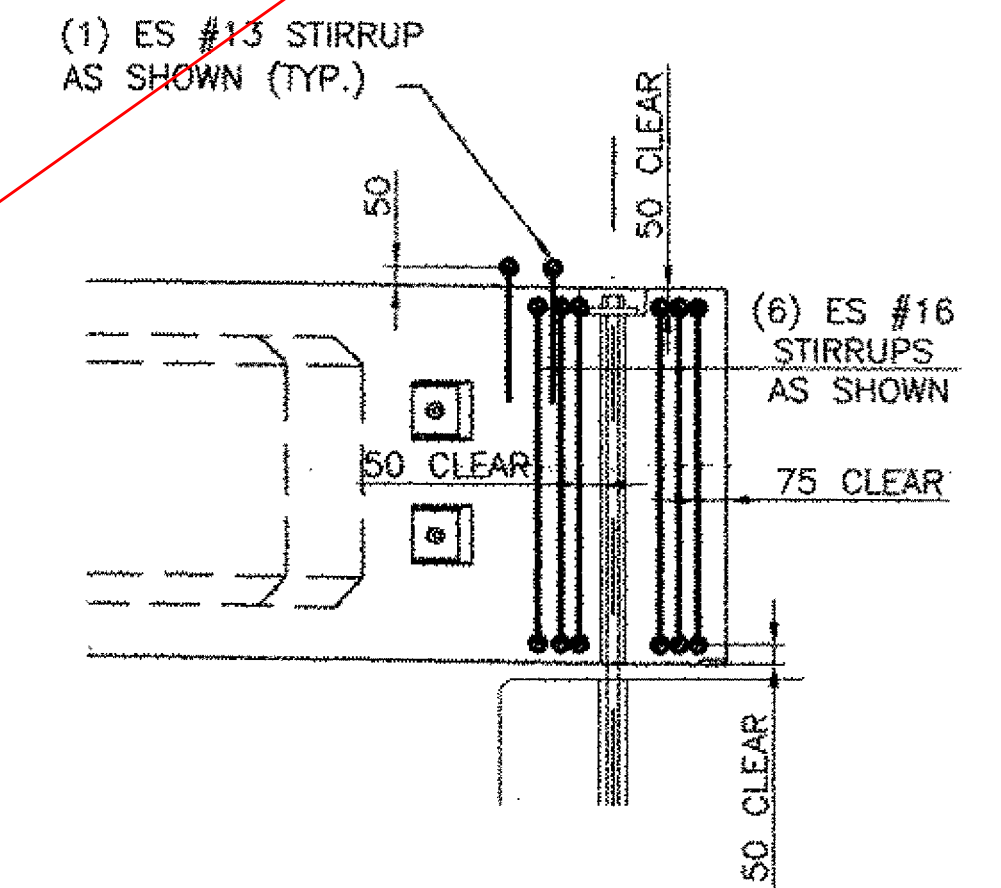


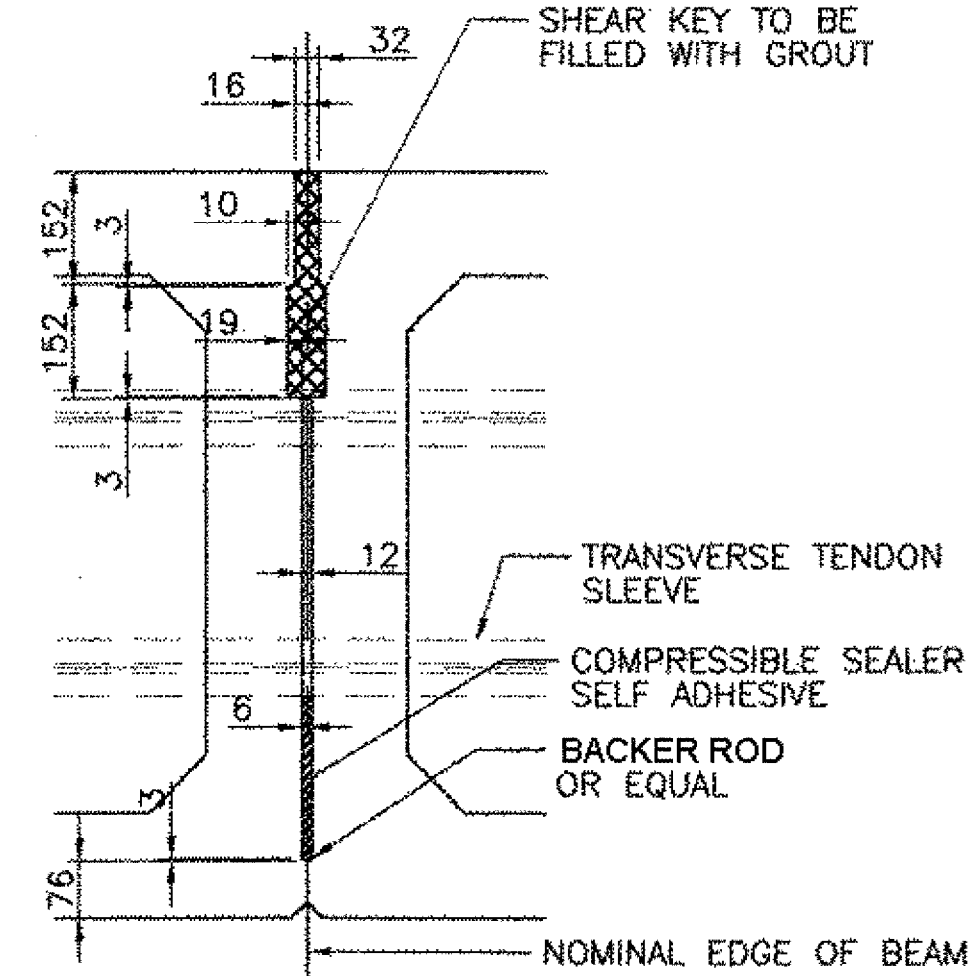
UNIT NO. 4, 5, 6 AND 7 SECTION
SCALE: 1 : 10



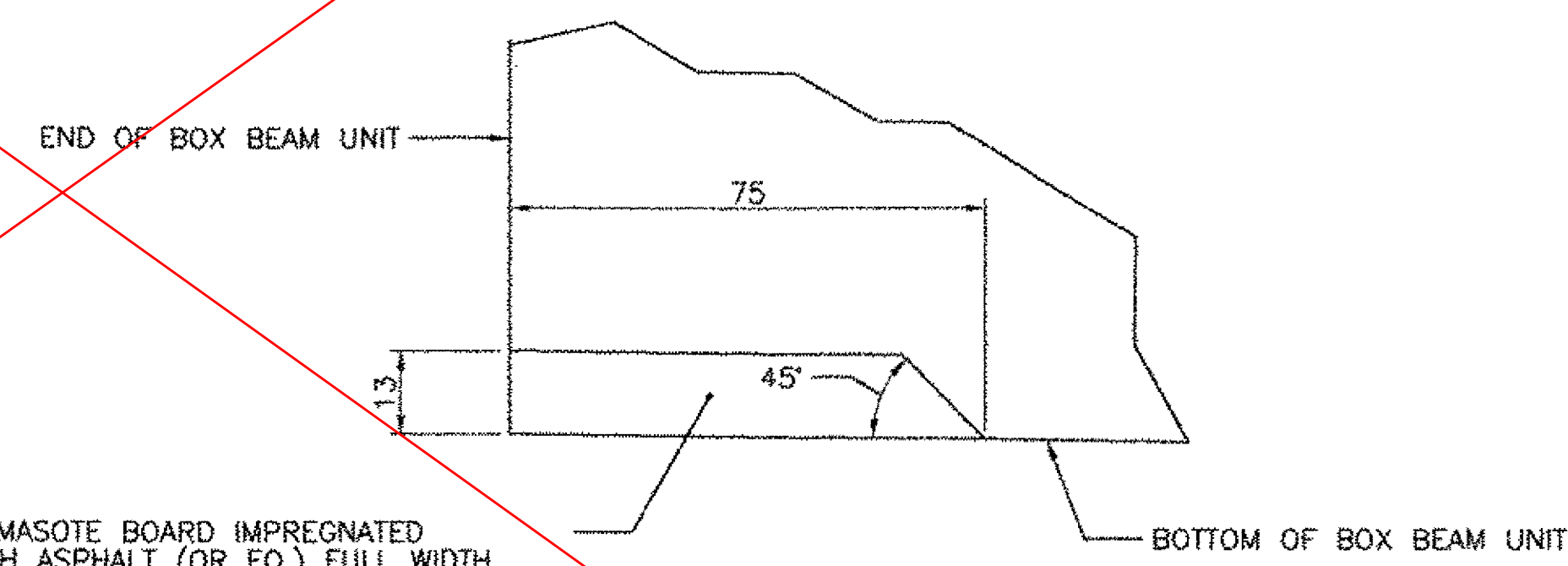
UNIT NO. 1, 2, 3, 8, 9 AND 10 SECTION
SCALE: 1 : 10



PRESTRESSED BOX BEAM UNIT
END DETAIL ELEVATION
SCALE: 1:20

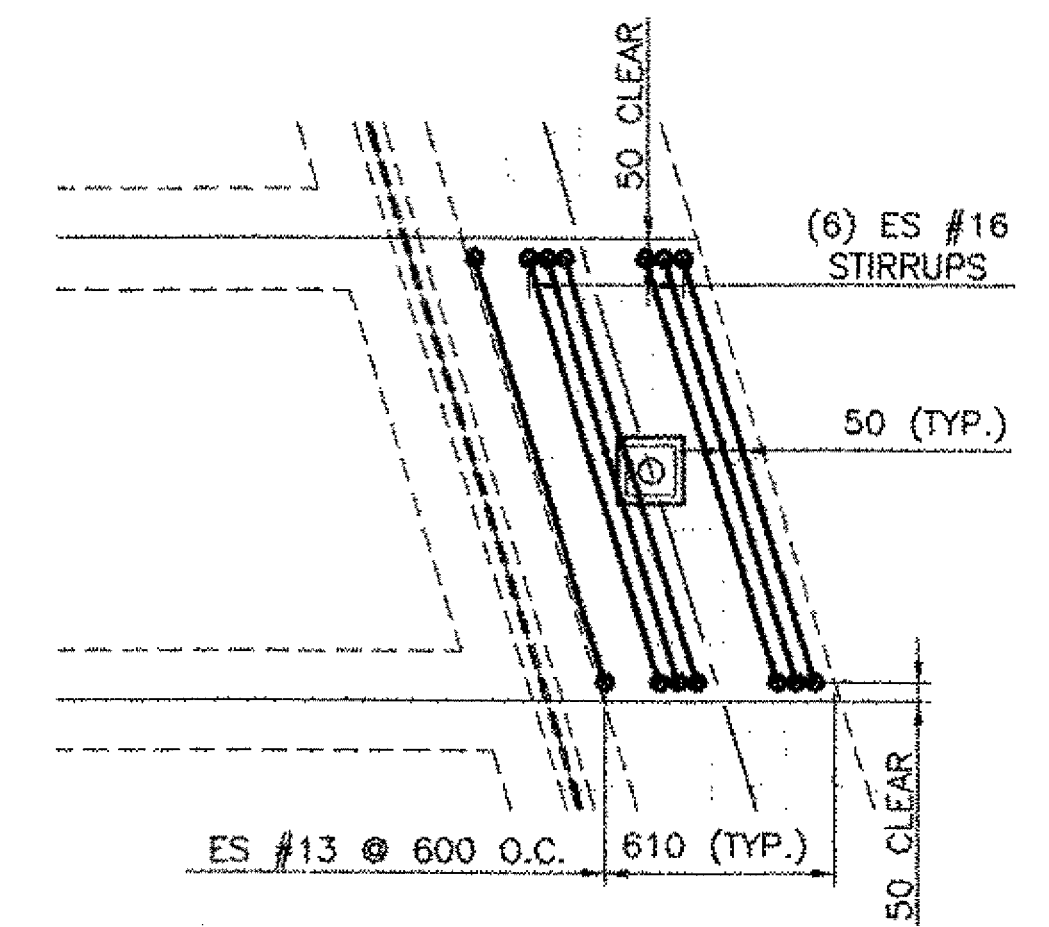


TYPICAL SHEAR KEY DETAIL
SCALE: 1 : 10

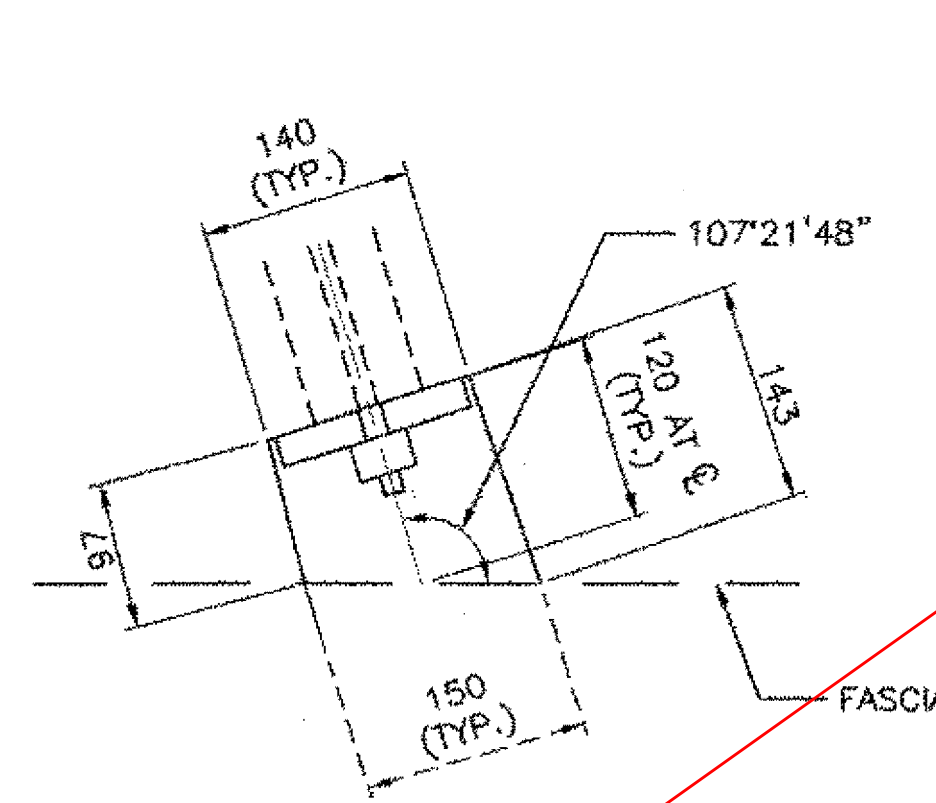


HOMASOTE BOARD IMPREGNATED WITH ASPHALT (OR EQ.) FULL WIDTH, OF END, OF PRECAST UNIT FASTENED TO PRECAST UNIT TYP. EACH END. PAYMENT SHALL BE INCIDENTAL TO ITEM 510.21, "PRESTRESSED CONCRETE BOX BEAM (990 X 914)" AND ITEM 510.21, "PRESTRESSED CONCRETE BOX BEAM (990 X 1220)".

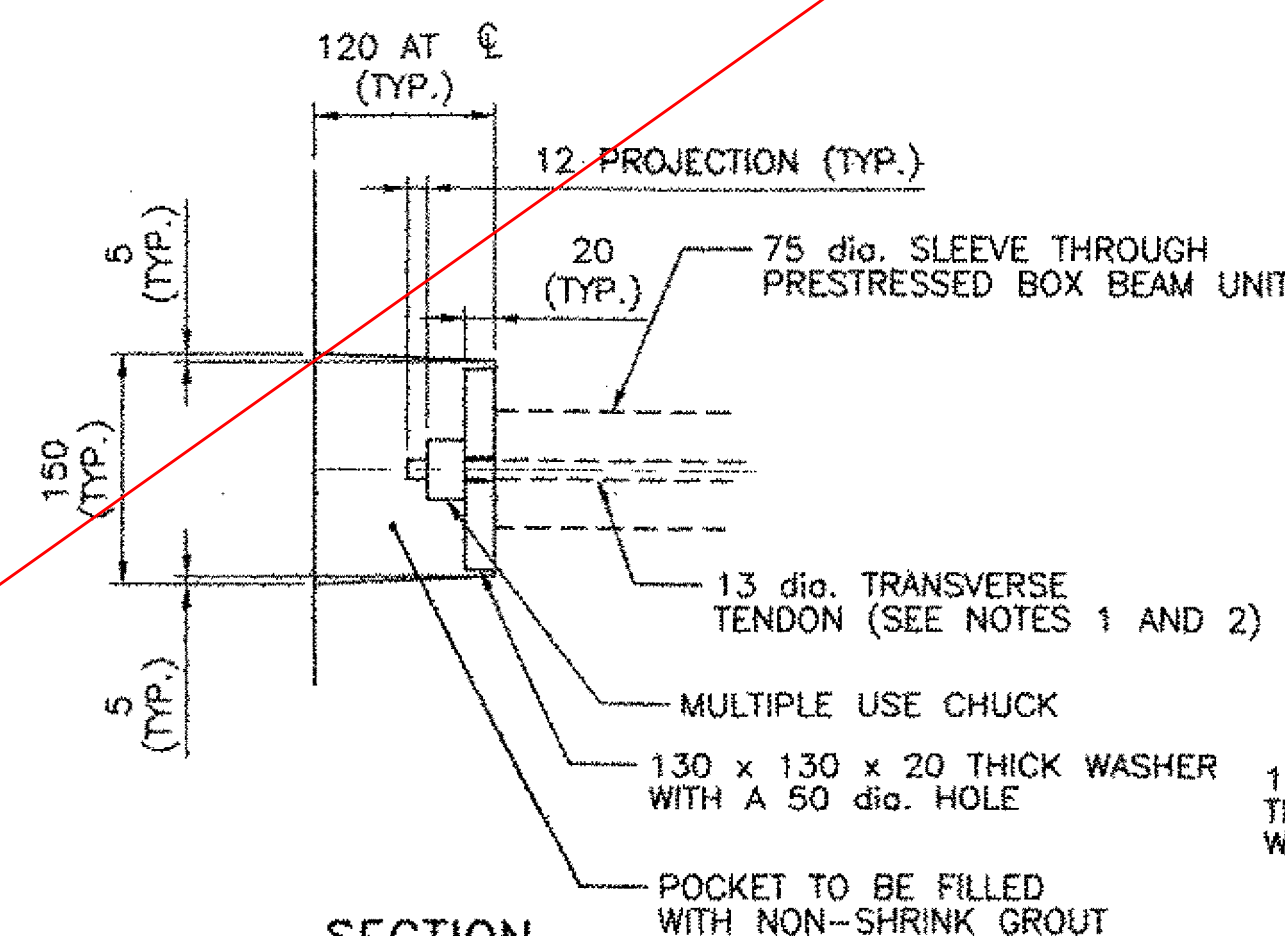
HOMASOTE DETAIL
FULL SCALE



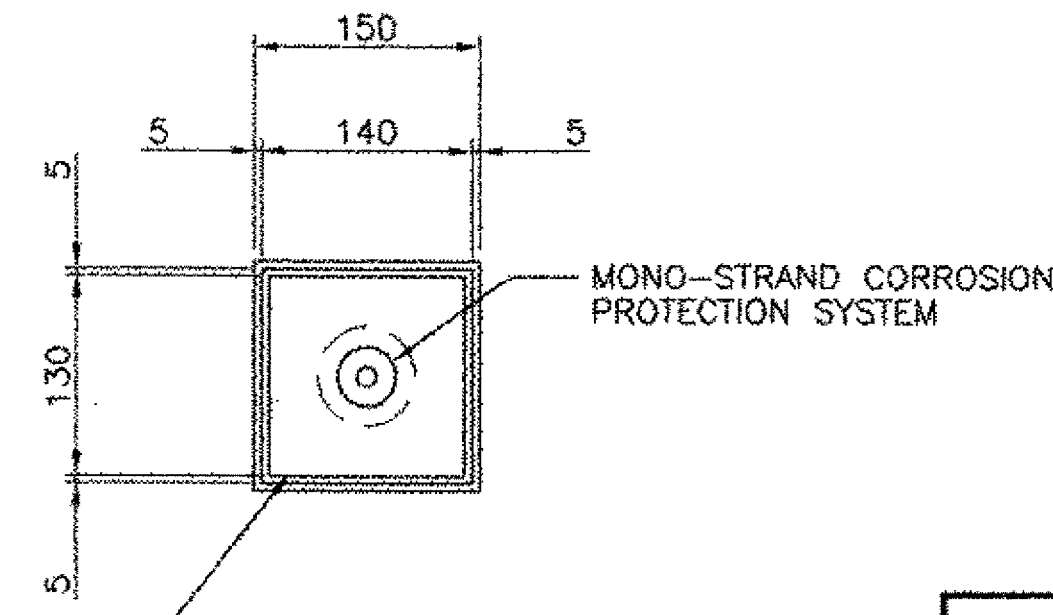
PRESTRESSED BOX BEAM UNIT
END DETAIL PLAN
SCALE: 1:20



PLAN OF POCKET



SECTION
TRANSVERSE TENDON DETAIL
SCALE: 1:5



PLAN

SHEET NOT USED

NOTES:

1. TRANSVERSE TIES SHALL BE COVERED BY SEAMLESS POLYPROPYLENE SHEATH (WITH CORROSION INHIBITER GREASE BETWEEN SHEATH AND STRAND) FOR THE LENGTH OF STRAND. EXCEPT AT ANCHORAGE LOCATIONS, TIES SHALL BE TENSIONED TO 133.5 kn
2. THE 20 THICK BAR SHALL CONFORM TO AASHTO M270/M270M GRADE 250, GALVANIZED AFTER FABRICATION, ACCORDING TO AASHTO M232. THE CHUCK SHALL ALSO BE GALVANIZED PER AASHTO M232.

REVISIONS			STATE OF VERMONT AGENCY OF TRANSPORTATION	
NO.	DESCRIPTION	BY & DATE		
			CLARENDON, VERMONT	Bridge No. 14
			TOWN HIGHWAY NO. 1	Log Sta.
				Surv. Sta.
TOWN HIGHWAY NO. 1 OVER THE COLD RIVER				
PRESTRESS UNIT DETAILS				
Designed by: B. C. AUSTIN			Drawn by: E. B. SMALL	
Checked by: K. S. MARSHIA date 05/02			Bridge Design Supervisor: J.W. TUCKER date 05/02	
PROJECT: CLARENDON			PROJECT NO.: BRO 1443(29)	
Bridge Sheet No.			SHEET 21 OF 41	

