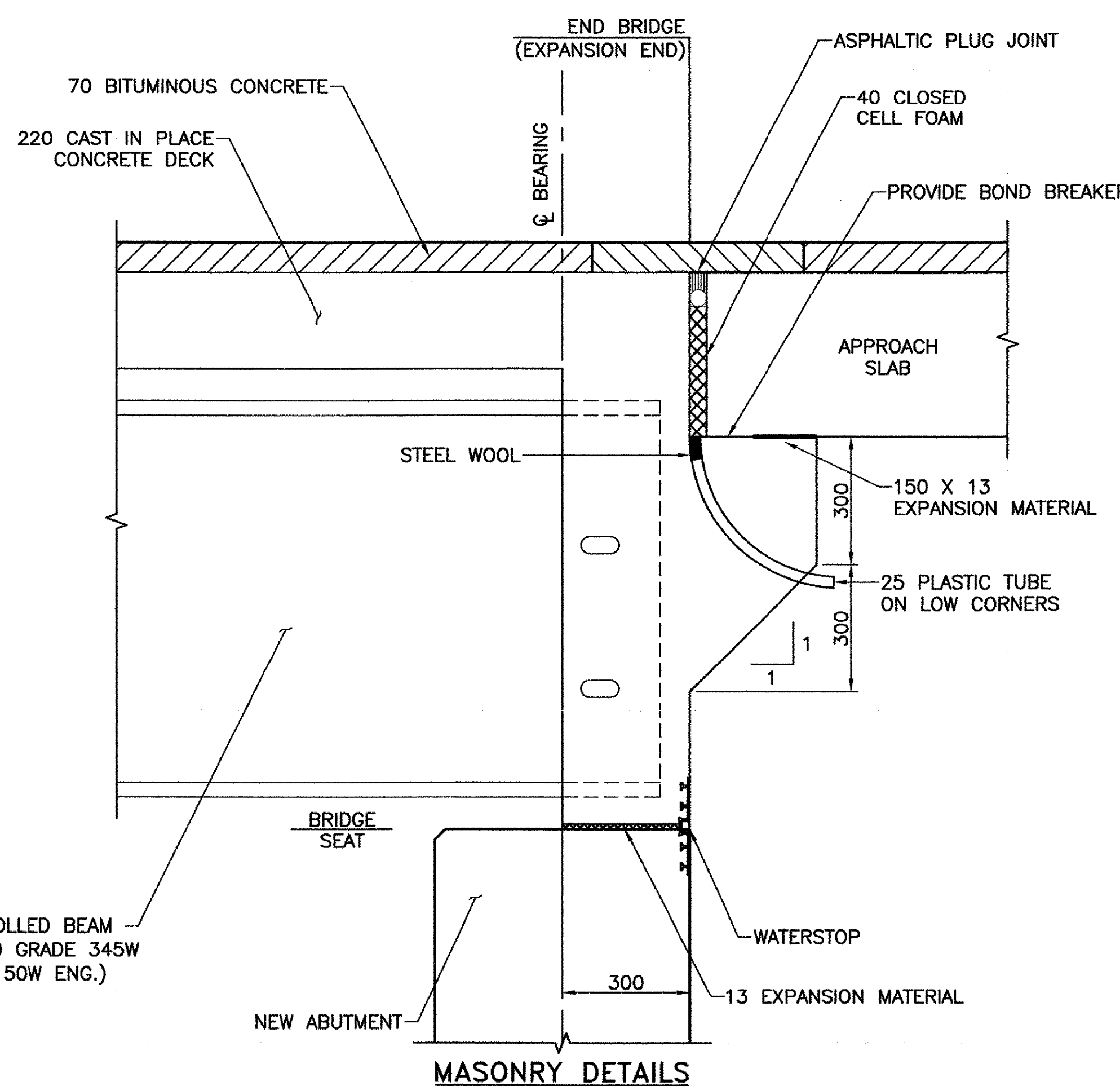
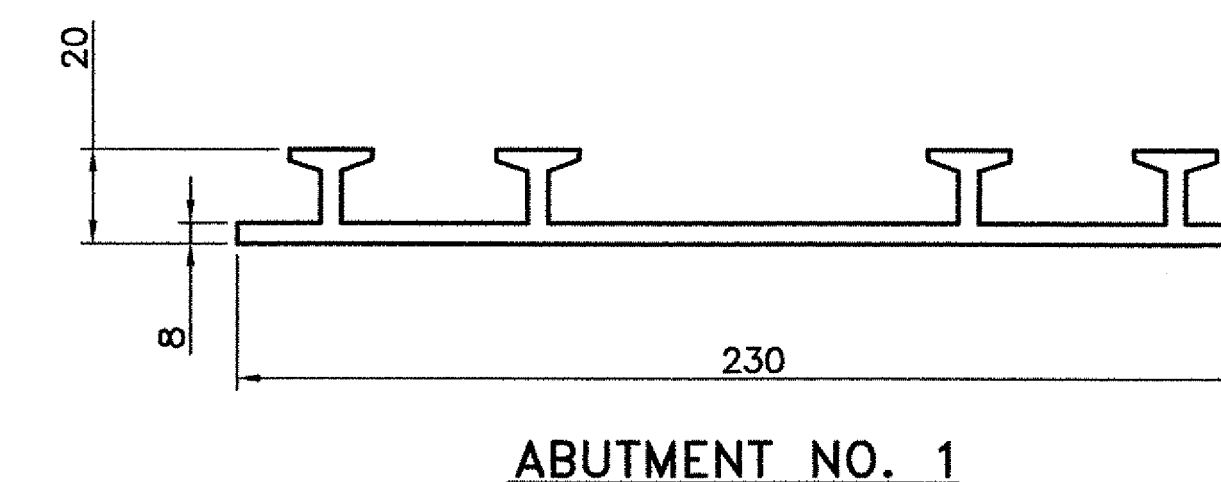


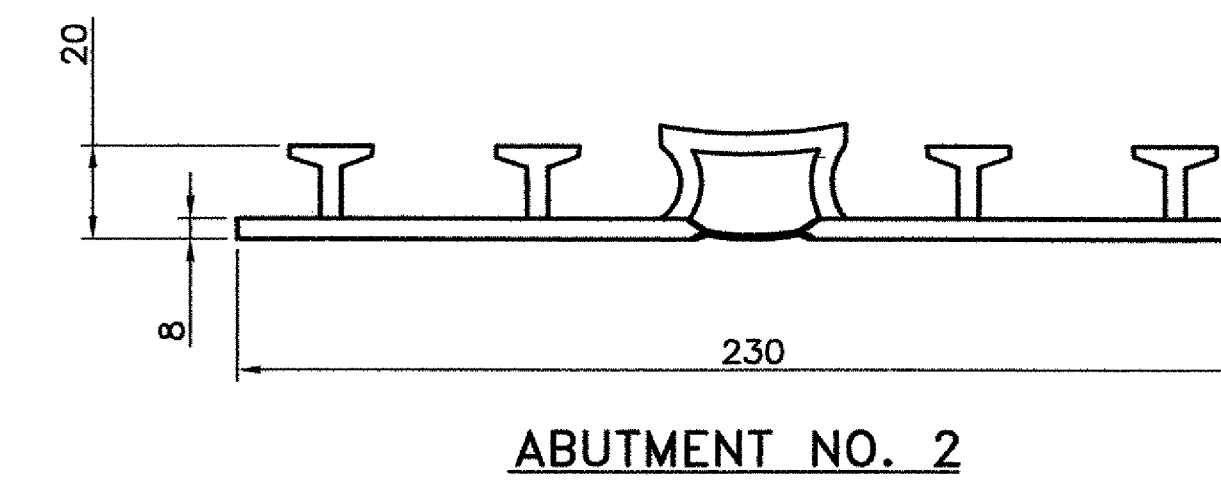
MASONRY DETAILS



MASONRY DETAILS



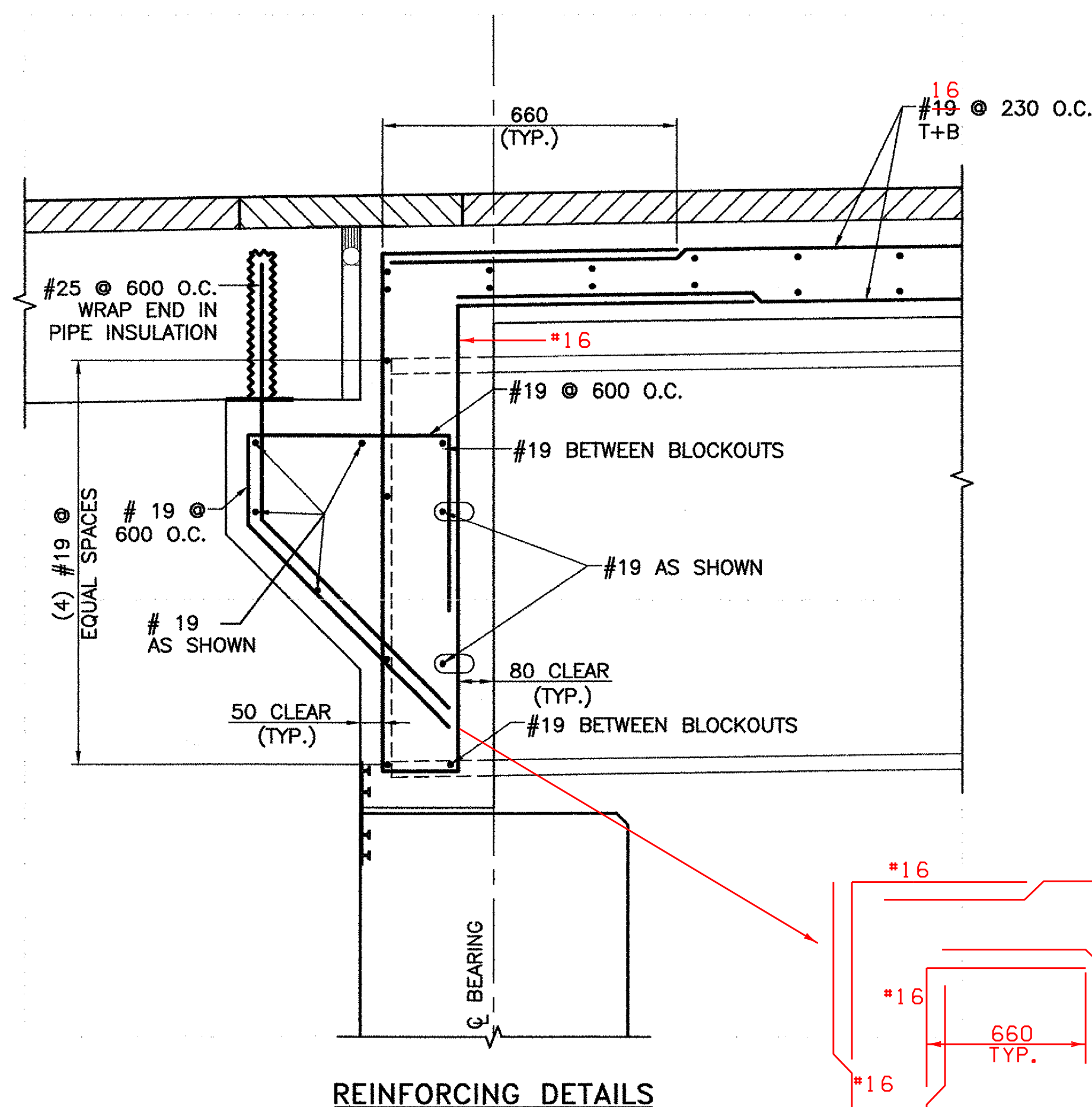
ABUTMENT NO. 1



ABUTMENT NO. 2

P. V. C. WATERSTOP FOR JOINT AT BACKWALL

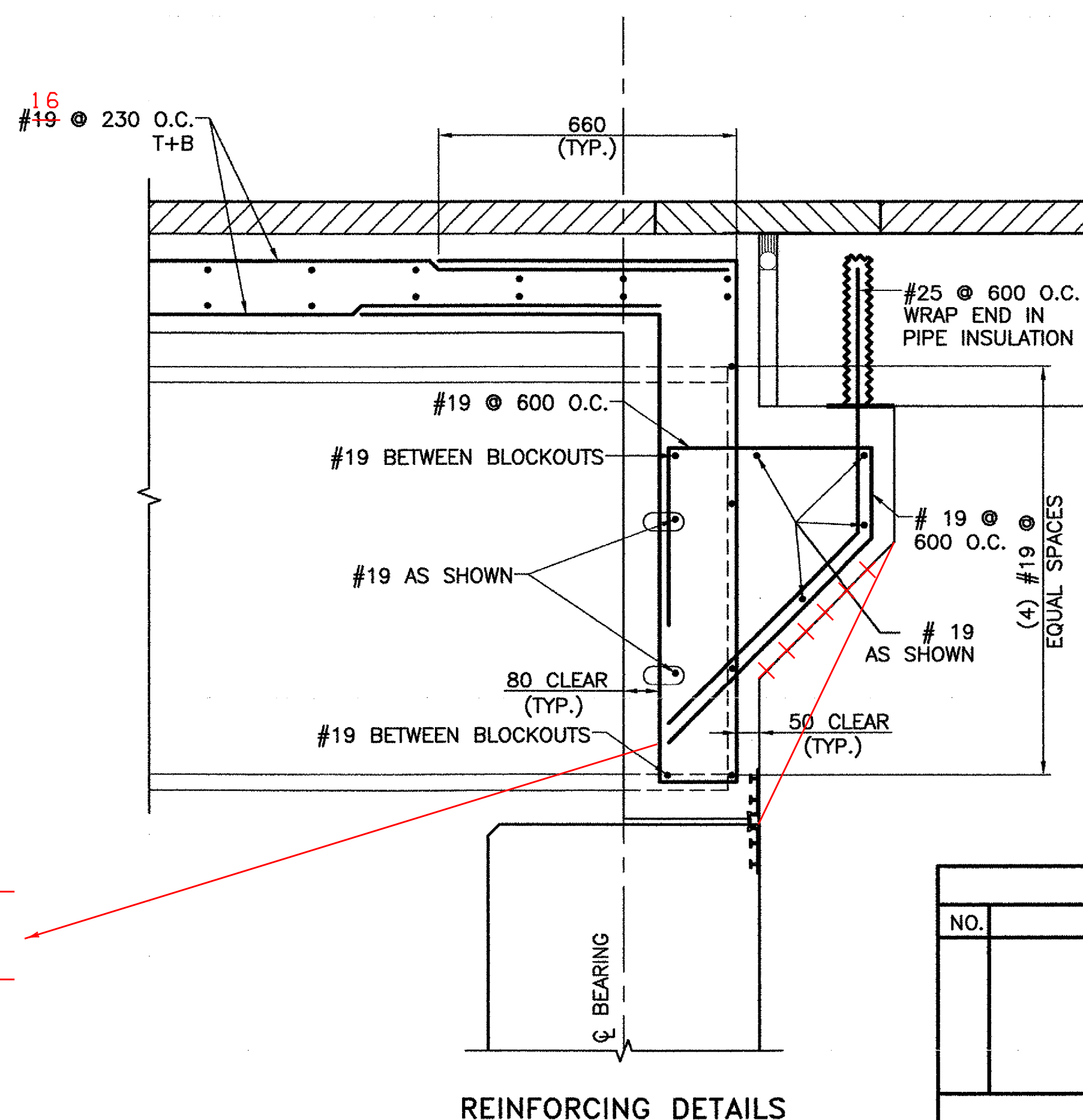
THE COST FOR P. V. C. WATERSTOPS SHALL BE INCLUDED IN THE UNIT PRICE BID FOR CONCRETE. OTHER CONFIGURATIONS MAY BE USED UPON APPROVAL OF THE ENGINEER.



REINFORCING DETAILS

ABUTMENT NO. 1 DECK END DETAIL (FIXED END)

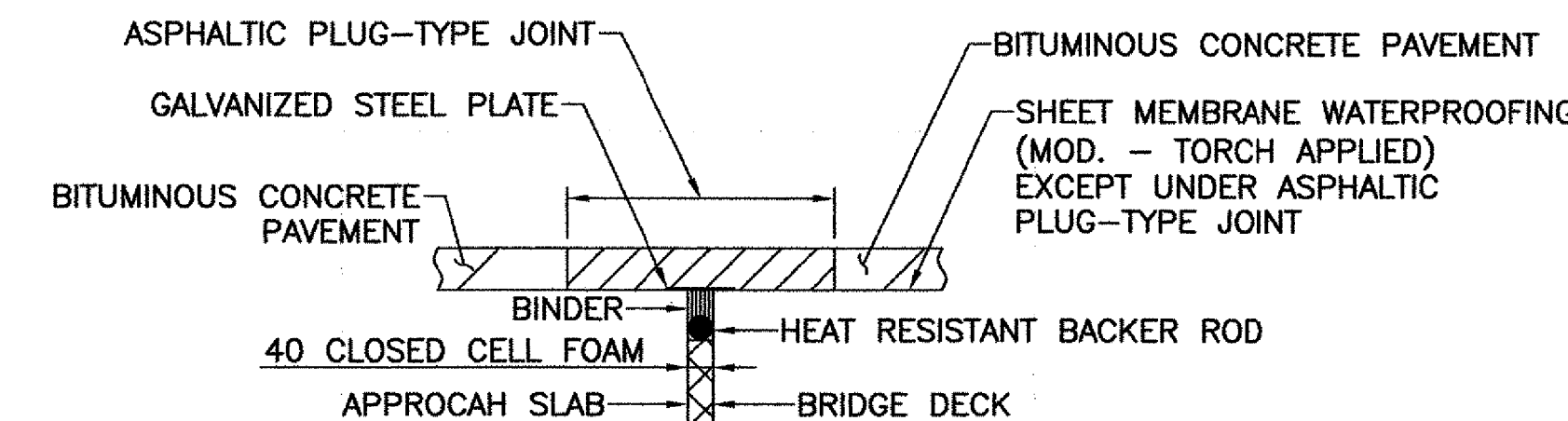
SCALE: 1:10



REINFORCING DETAILS

ABUTMENT NO. 2 DECK END DETAIL (EXPANSION END)

SCALE: 1:10



ASPHALTIC PLUG-TYPE JOINT DETAIL

NTS

NOTE:

- ALL REINFORCEMENT IN DECK AND CURTAIN WALLS SHALL BE EPOXY COATED.
- CONTRACTOR SHALL VERIFY ALL REINFORCING STEEL LENGTHS AND DIMENSIONS PRIOR TO ORDERING REINFORCEMENT. THE CURRENT REINFORCING STEEL SCHEDULE IS NOT ACCURATE AND SHALL NOT BE USED AS THE BASIS FOR ORDERING REINFORCEMENT.

NOTES:

- NF = NEAR FACE
- FF = FAR FACE
- EF = EACH FACE
- ▲ = CUT TO FIT IN FIELD
- T+B = TOP AND BOTTOM
- OC = ON CENTER
- MINIMUM LAP LENGTH NOT DETAILED SHALL BE 660

NOTE:

SECTIONS ARE PERPENDICULAR TO FACE OF ABUTMENT.

REVISIONS		
NO.	DESCRIPTION	BY & DATE

STATE OF VERMONT AGENCY OF TRANSPORTATION

CLARENDON, VERMONT	Bridge No. 14
TOWN HIGHWAY NO. 1	Log Sta.
TOWN HIGHWAY NO. 1 OVER THE COLD RIVER	
BRIDGE END DETAILS	
Designed by: A.P. GUYETTE	Drawn by: A.P. GUYETTE
Checked by: J.W. TUCKER date 1/06	Bridge Design Supervisor J.W. TUCKER date 1/06
PROJECT CLARENDON	PROJECT NO. BRO 1443(29)
Bridge Sheet No.	SHEET 19A OF 41