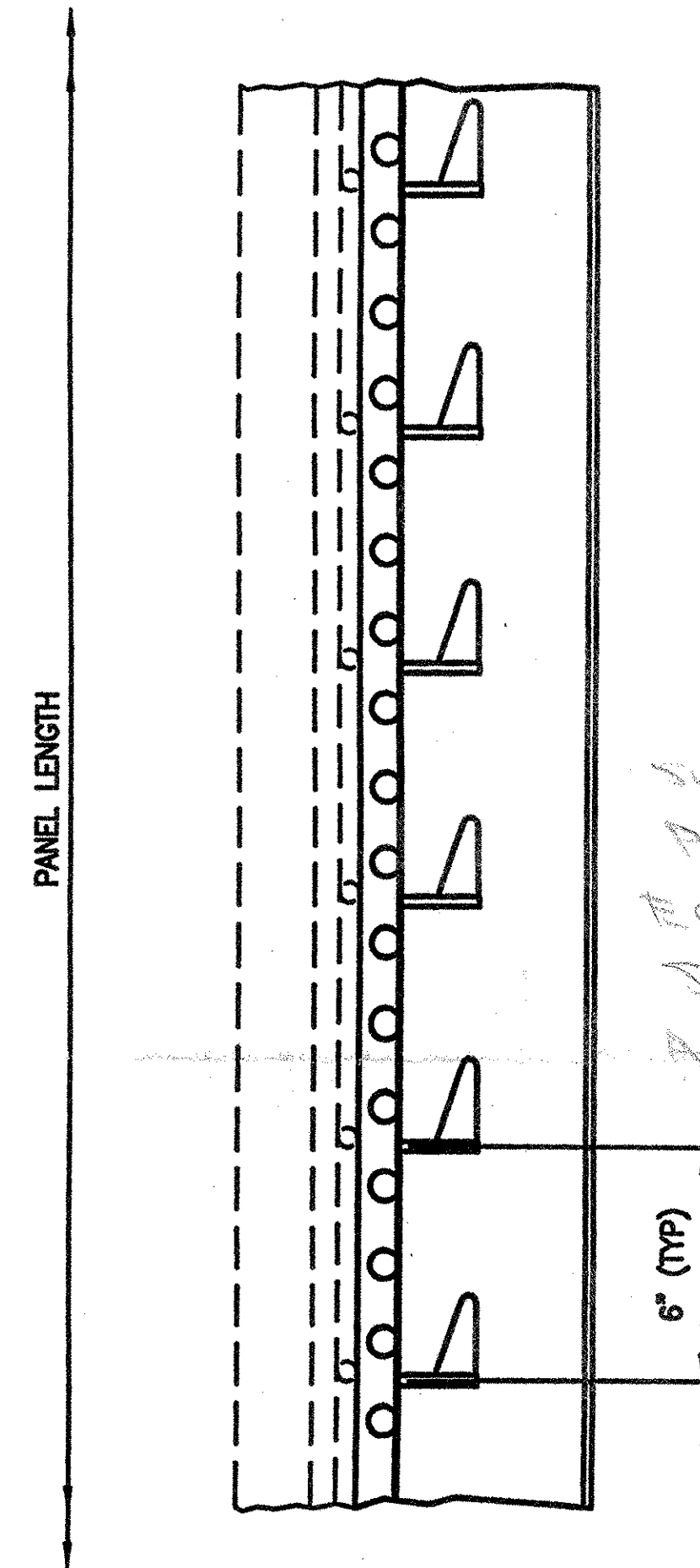
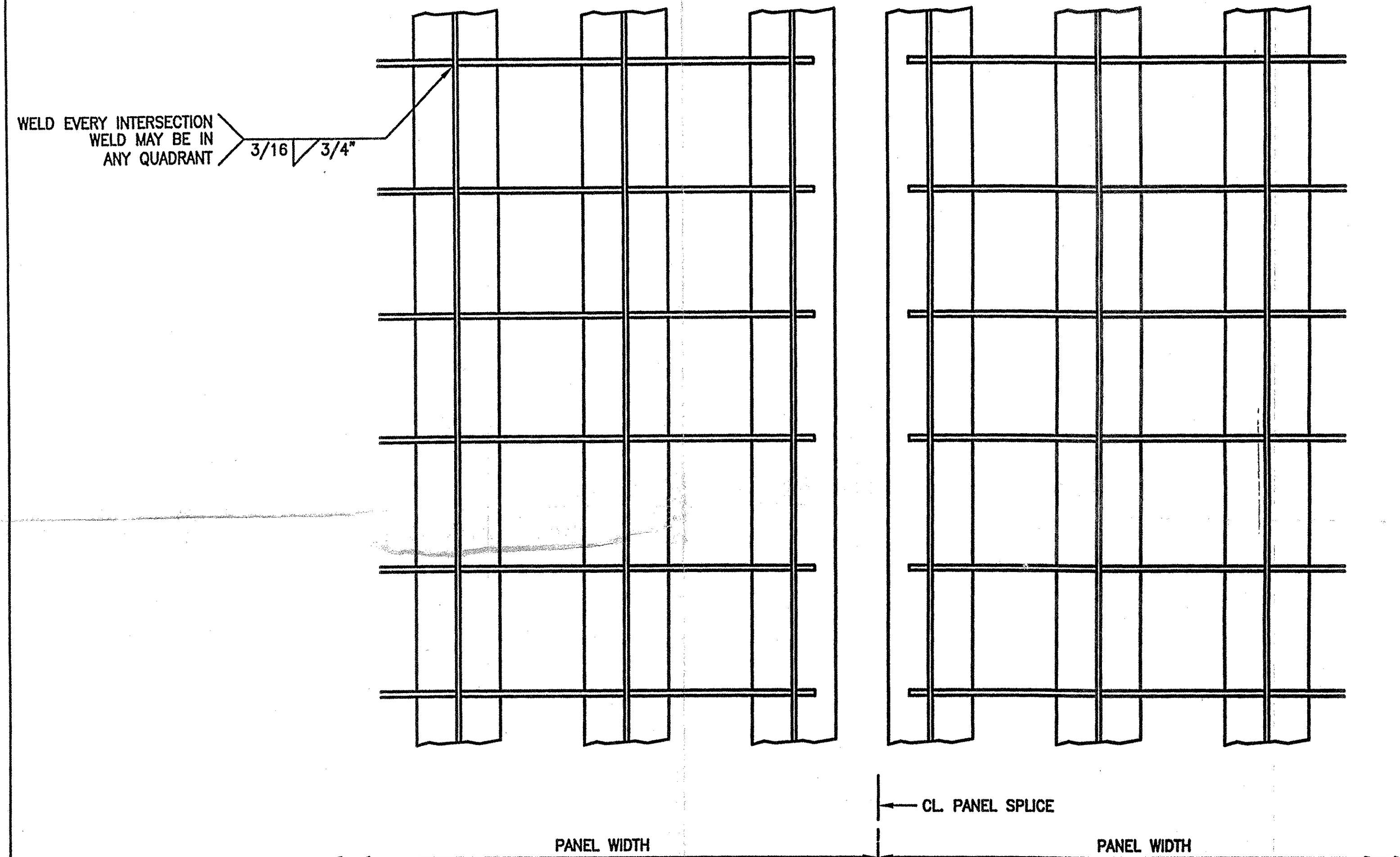


STANDARD PANEL TOLERANCES	
PANEL WIDTH	+0 -1/8
PANEL LENGTH	±1/4
SQUARENESS	±1/2
TRANSVERSE CAMBER (WIDTH)	.005 x WIDTH
LONGITUDINAL CAMBER (LENGTH)	.003 x LENGTH
SIDE BOW (SWEEP)	±1/4 PER 10'-0"
MAIN BAR VERTICALITY	±1/8
CROSS BAR VERTICALITY	±1/16

MATERIAL SPECIFICATIONS			
DESCRIPTION	ASTM	ALLOY / GR.	REMARKS
WT6 X 7 AND DISTRIBUTION BARS	A 572 (ASHTO M270)	GRADE 50	
20 GA. FORM PAN	A 366		BLACK (SHOP WELDED PANS)
20 GA. FORM PAN	A 653	GR. 90 OR BETTER	GALV'D (FIELD INSTALLED PANS)
TEK SCREWS			SMD 8-18 X 1/2 HWH #4 ZINC PLATED



*SURFACE PREP. TO BE EQUIVALENT TO SSPC-SP8 IN ACCORDANCE WITH 706.14.5(1)*

**GENERAL NOTES:**  
 MATERIAL AND WORKMANSHIP SHALL BE IN ACCORDANCE WITH THE STATE OF VERMONT AGENCY OF TRANSPORTATION "STANDARD SPECIFICATIONS FOR CONSTRUCTION" DATED 2001 AND ITS LATEST REVISIONS.  
 SHOP WELDING SHALL BE PERFORMED BY THE GAS METAL ARC PROCESS (MIG) USING ER70S-3 FILLER METAL PER AWS D1.5 OF THE BRIDGE WELDING CODE.  
 BLAST CLEANING NOT REQUIRED. SHOP WELD AREAS TO BE WIRE BRUSHED PRIOR TO WELDING.  
 AFTER FABRICATION, GRID PANELS SHALL BE HOT DIPPED GALVANIZED PER ASTM A123. DUE TO THE GALVANIZING PROCESS, PANELS MAY HAVE SOME DISTORTION AND SIDE SWEEP WHICH WILL REQUIRE ADJUSTMENT BY THE CONTRACTOR PRIOR TO INSTALLATION.  
 PAY ITEM: 509.20 STEEL GRID FLOORING (EXODERMIC)  
 PAY AREA: 3,172 SF

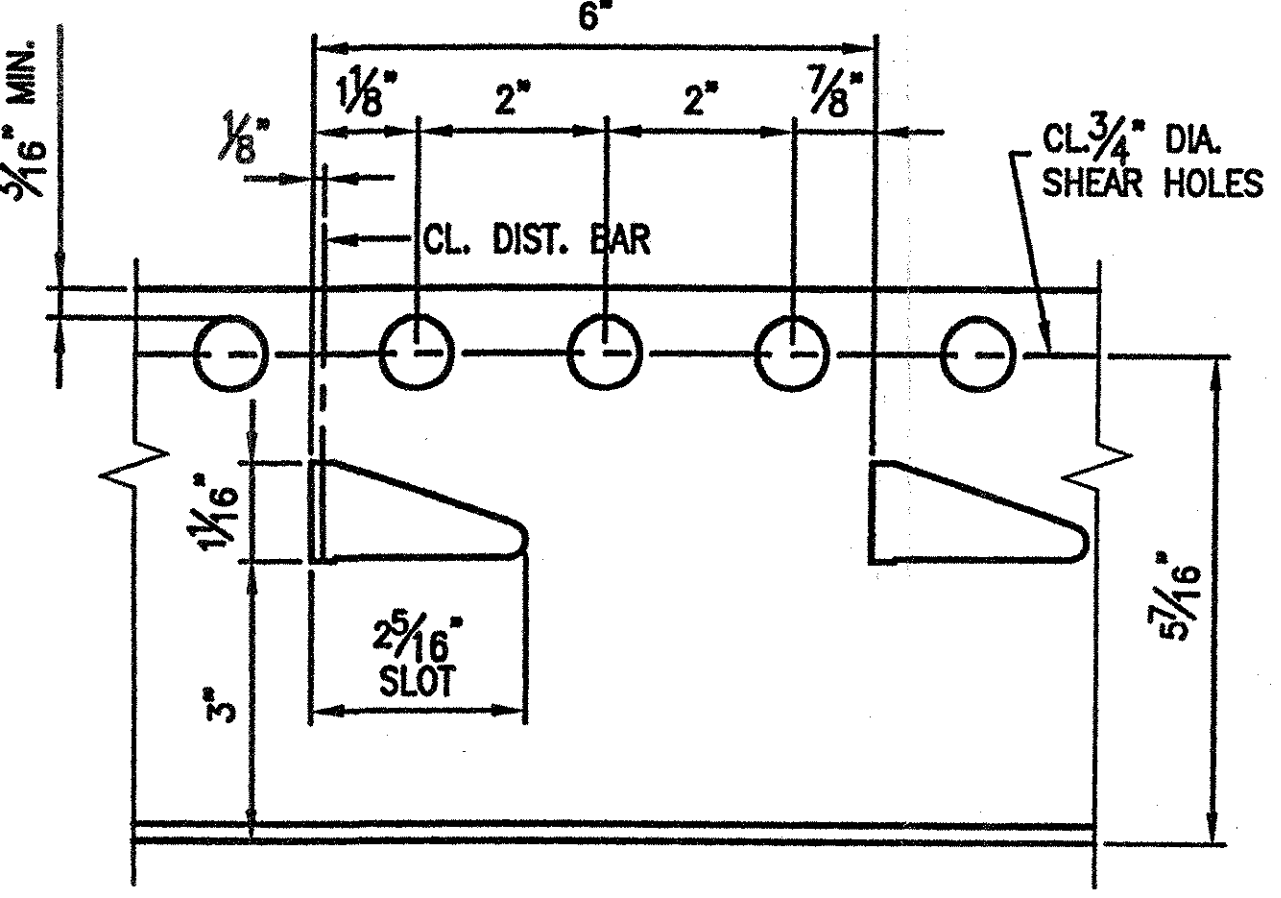
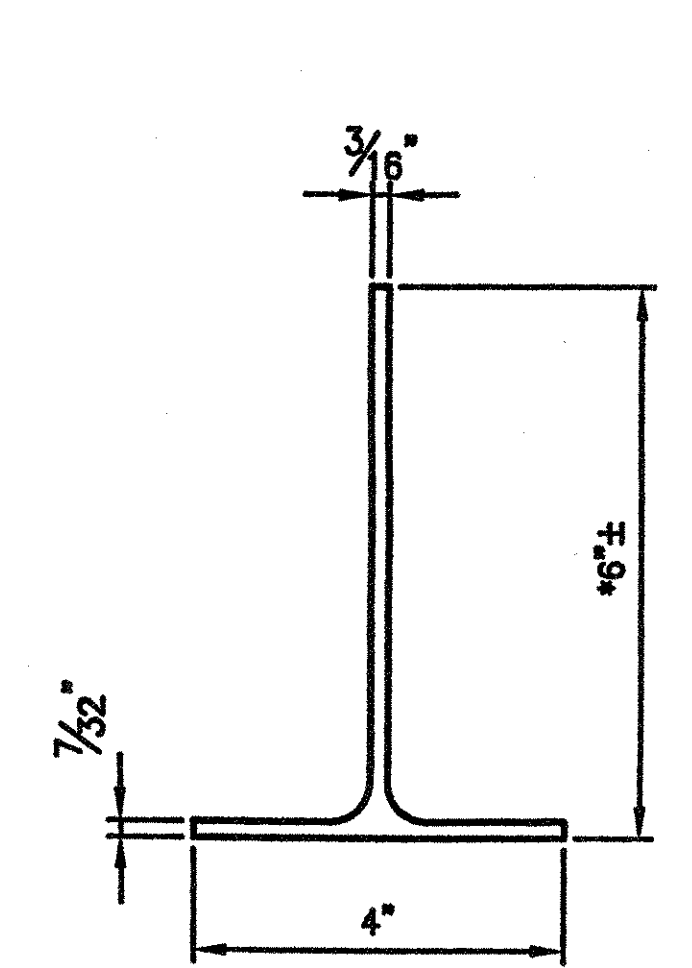
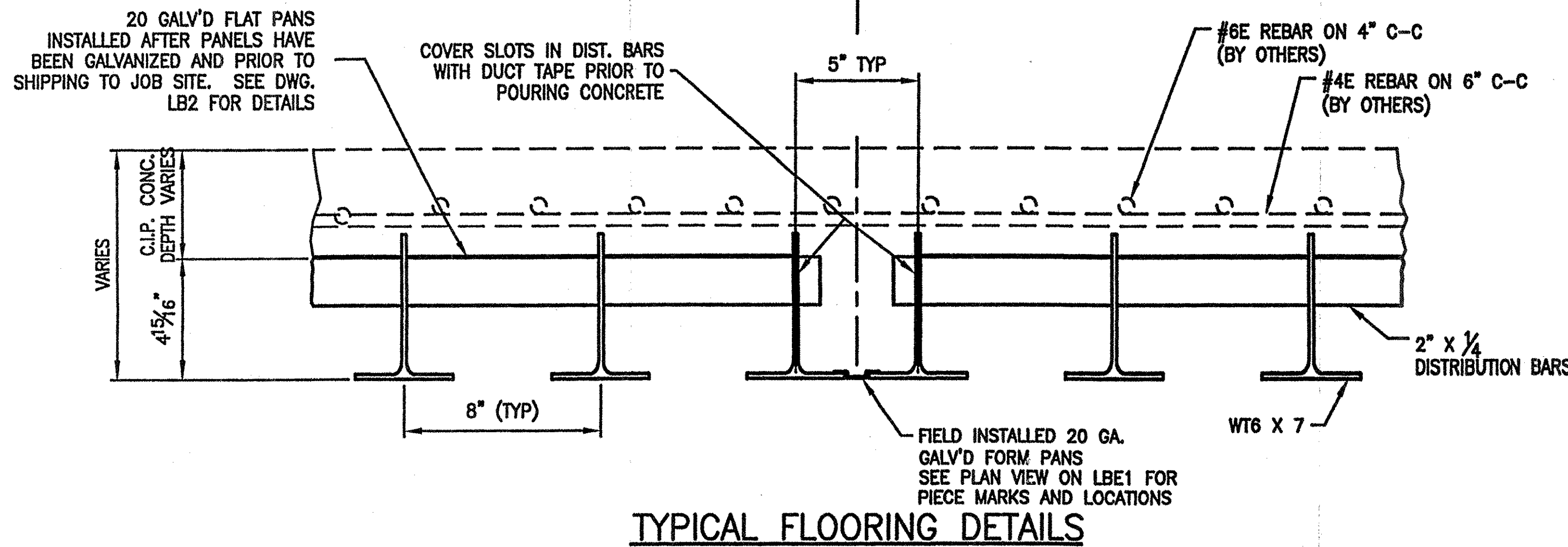
**STRUCTURE'S COPY**

- NO EXCEPTION TAKEN
- REJECTED
- MAKE CORRECTIONS NOTED
- REVISE AND RESUBMIT
- SUBMIT SPECIFIED FEEL

CHECKING IS ONLY FOR GENERAL CONFORMANCE WITH THE DESIGN CONCEPT OF THE PROJECT AND GENERAL COMPLIANCE WITH THE INFORMATION GIVEN IN THE CONTRACT DOCUMENTS. ANY ACTION GIVEN BY SUBJECT TO THE REQUIREMENTS OF THE PLANS AND SPECIFICATIONS, CONTRACTOR IS RESPONSIBLE FOR DIMENSIONS WHICH SHALL BE OBTAINED AND CORRELATED AT THE JOB SITE. FABRICATION PROCESSES AND TECHNIQUES OF CONSTRUCTION, COORDINATION OF HIS WORK WITH THAT OF ALL OTHER TRADES AND THE SATISFACTORY PERFORMANCE OF HIS WORK.

CLOUGH HARBOR & ASSOCIATES LLP  
 ENGINEERS, SURVEYORS, ARCHITECTS  
 & LANDSCAPE ARCHITECTS  
 DATE: 5/13/07 BY: [Signature]

REVIEWED MAY 18 2007  
 CPM CONSTRUCTORS  
 MICHAEL P. HEINA  
 REGISTERED PROFESSIONAL ENGINEER  
 PENNSYLVANIA  
 05/18/07



**TYPICAL FLOORING DETAILS**

**WT 6 X 7 DETAIL**

\*DUE TO MILL TOLERANCES, THE WT6 X 7 MAY VARY IN HEIGHT.

APPROVED: \_\_\_\_\_  
 L. B. FOSTER CO.  
 GENERAL OFFICES  
 PITTSBURGH, PENNSYLVANIA 15220  
 FOR: CPM CONSTRUCTORS  
 VERMONT AGENCY OF TRANSPORTATION  
 TOWN OF ST. JOHNSBURY, COUNTY OF CALEDONIA  
 T.H. 85 (CL.3) BRIDGE 29 OVER THE PASSUMPSIC RIVER  
 6" EXODERMIC GRID GENERAL NOTES AND TYPICAL DETAILS  
 MADE RLP DATE 4/10/07 JOB NO. SD0181  
 CHECK BLJ DATE 4/30/07 DRAWING LB1  
 REV. NO. 086 BG

REV	DESCRIPTION	BY	DATE	CHKD