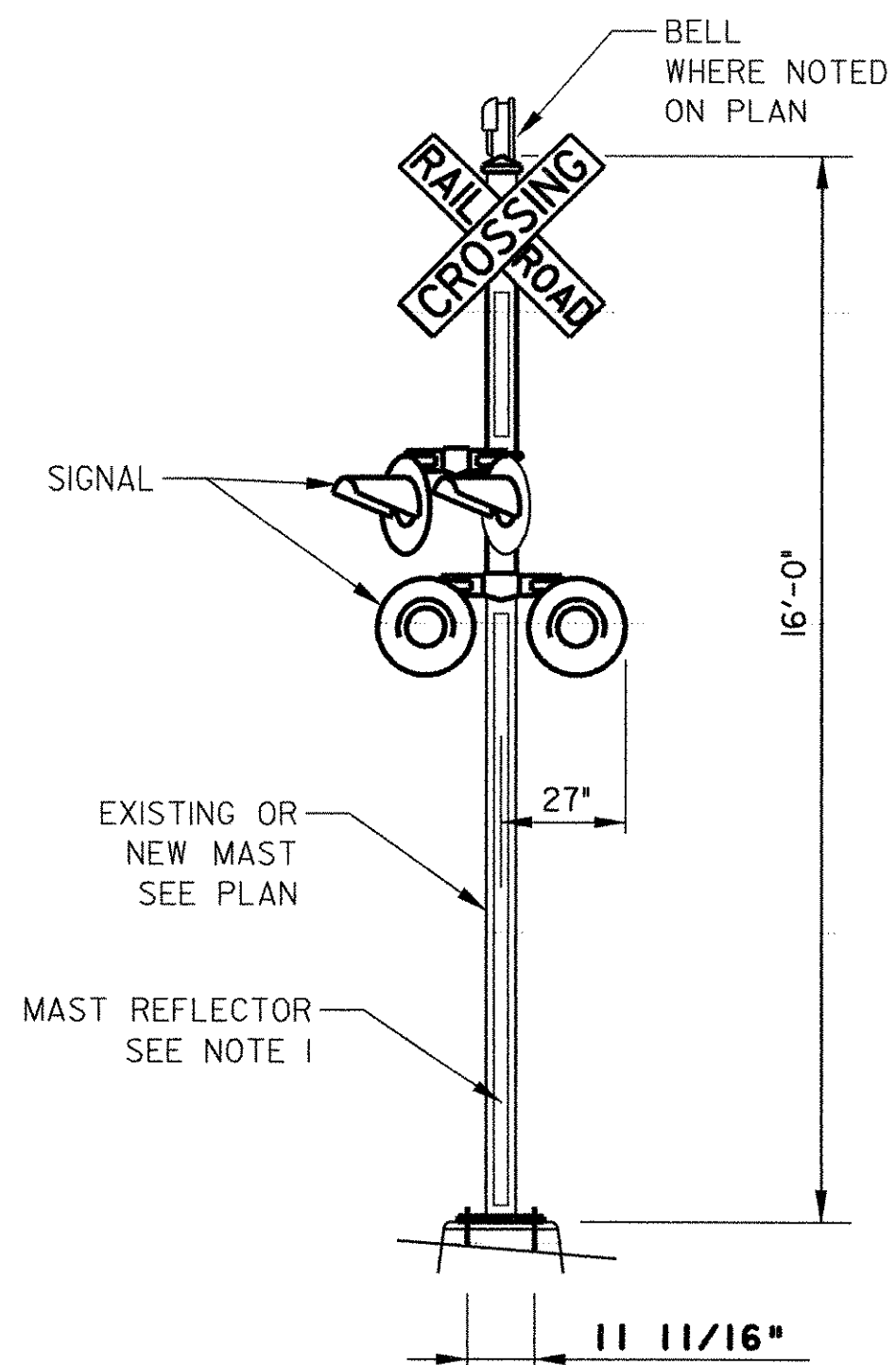


**TYPICAL RAILROAD  
CANTILEVER SIGNAL DETAIL**

NTS

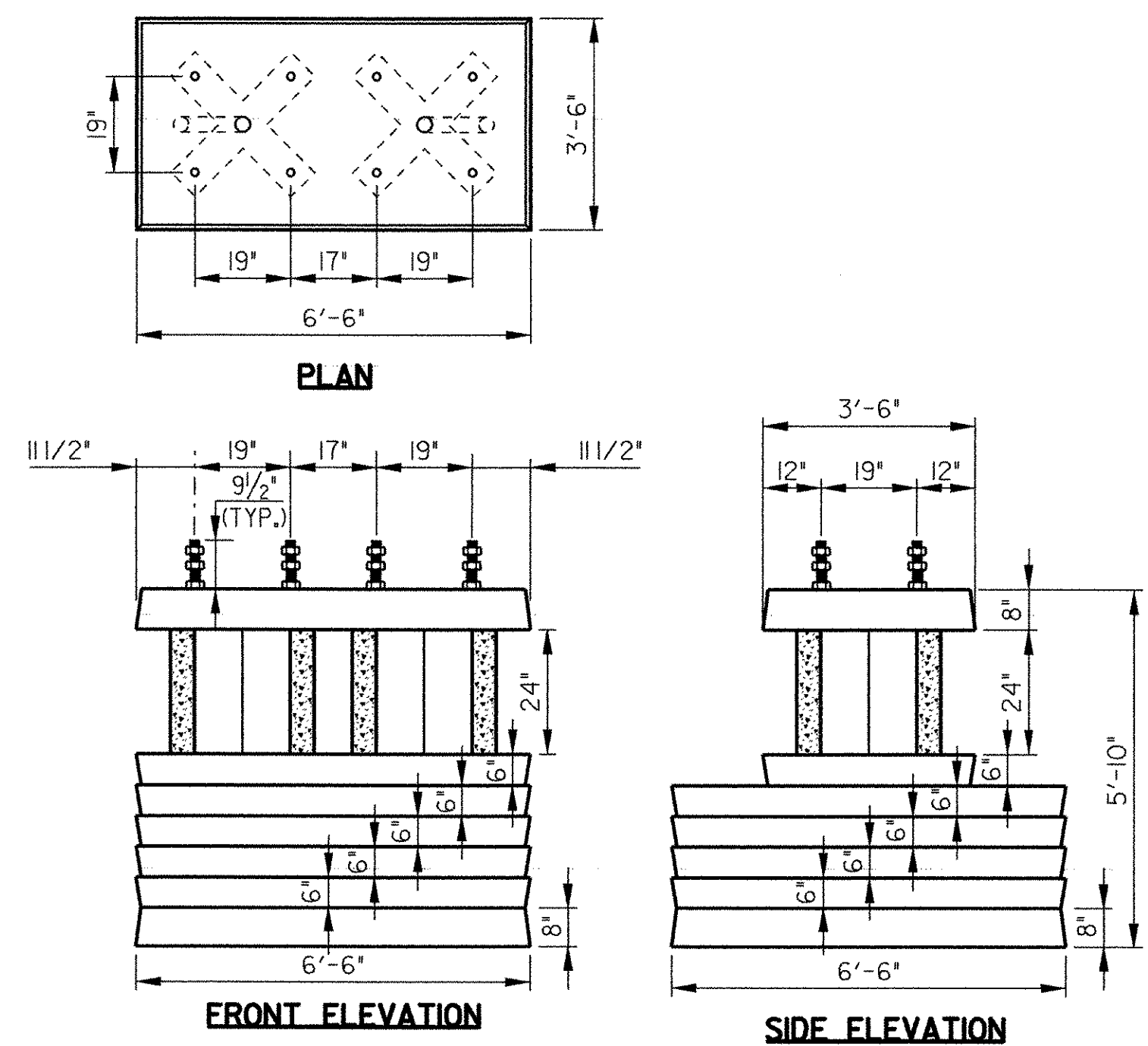


**TYPICAL RAILROAD SIGNAL DETAIL**

NTS

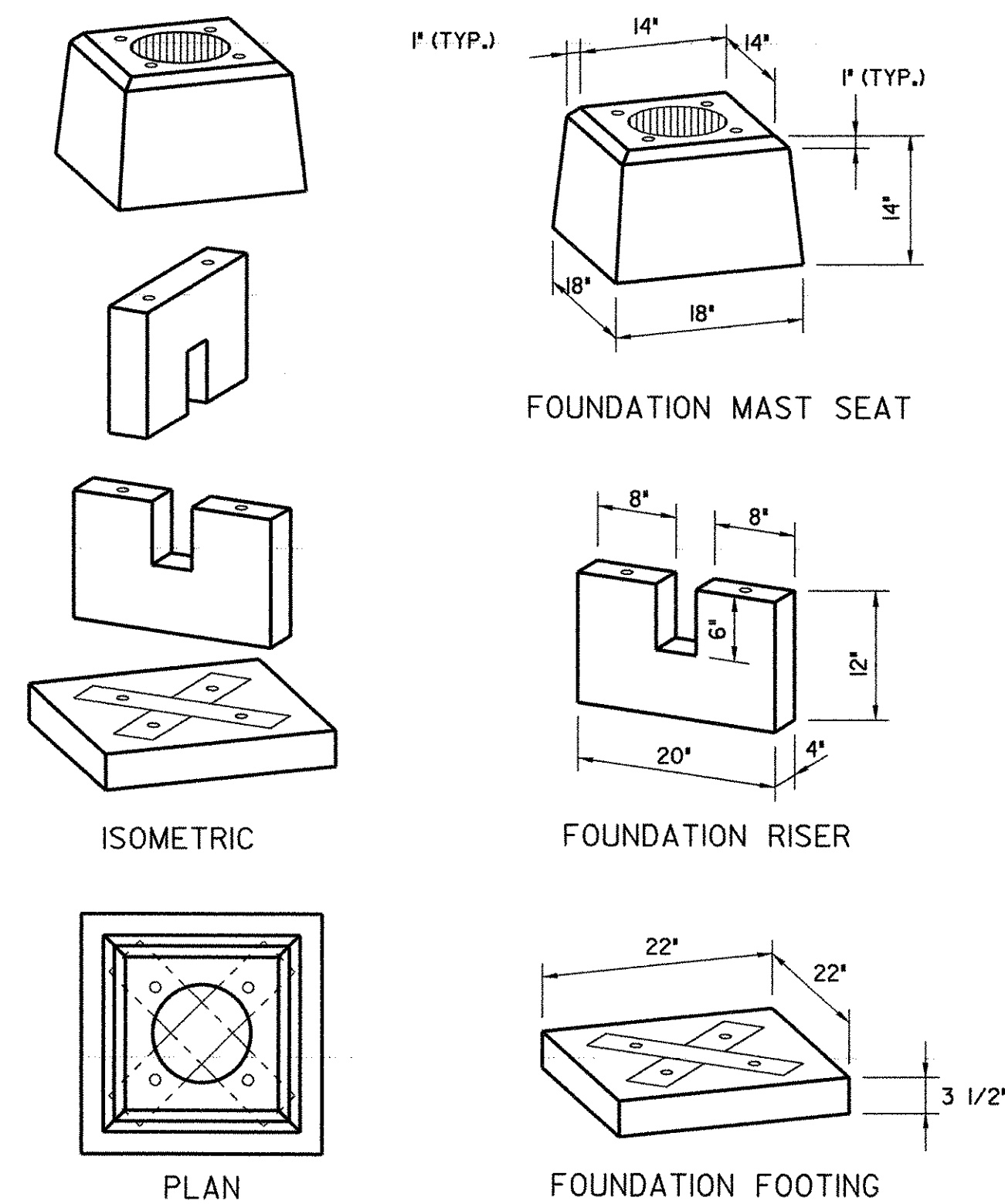
**NOTES:**

1. A STRIP OF ASTM TYPE III OR TYPE V RETROREFLECTIVE WHITE MATERIAL NOT LESS THAN 2 INCHES IN WIDTH, SHALL BE USED ON EACH SUPPORT AT HIGHWAY-RAIL GRADE CROSSING FOR THE FULL LENGTH OF THE FRONT AND BACK OF THE SUPPORT FROM THE CROSSBUCK SIGN OR NUMBER OF TRACKS SIGN TO NEAR GROUND LEVEL.
2. PLACE A MINIMUM OF (3) 1-13d SIGNS AT EACH CROSSING. ONE ON EACH SIDE OF THE CROSSING ON SIGNAL MASTS AND ONE ON THE SIGNAL CASE OR HOUSE.
3. FLASHING LIGHT SIGNAL EQUIPMENT SHALL BE 12" LED FLASHING LIGHT UNITS.



**TYPICAL DOUBLE MAST FOUNDATION DETAIL**

NTS



**TYPICAL FOUNDATION DETAIL**

NTS

PROJECT NAME: ST. JOHNSBURY

PROJECT NUMBER: BRO 1447(19)

FILE NAME: S92J104RRFNDT.dgn  
PROJECT LEADER: C. WILLIAMS  
DESIGNED BY: C. WILLIAMS

PLOT DATE: 10/16/06  
DRAWN BY: C. WILLIAMS  
CHECKED BY: C. WILLIAMS  
SHEET 55 OF 72