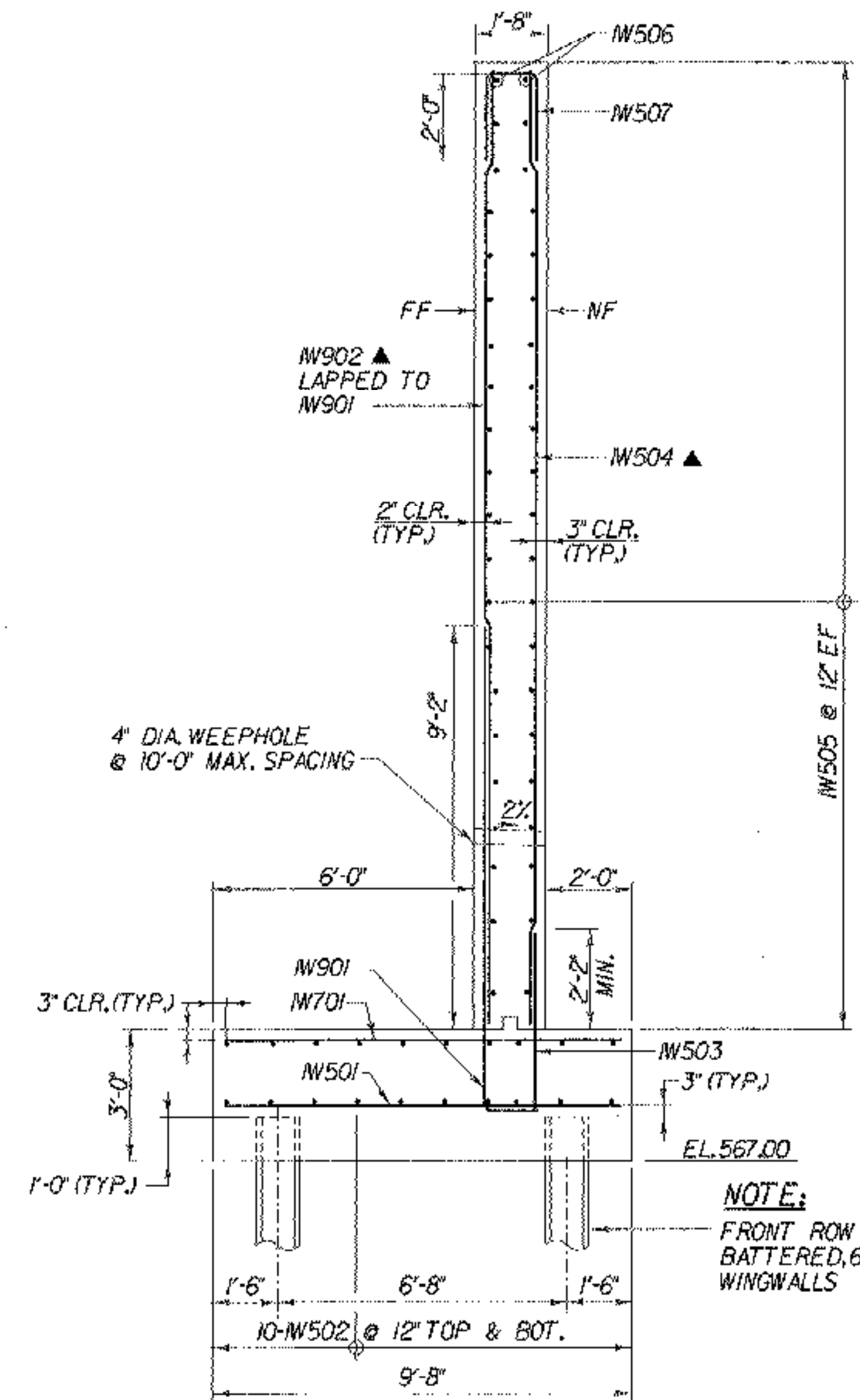
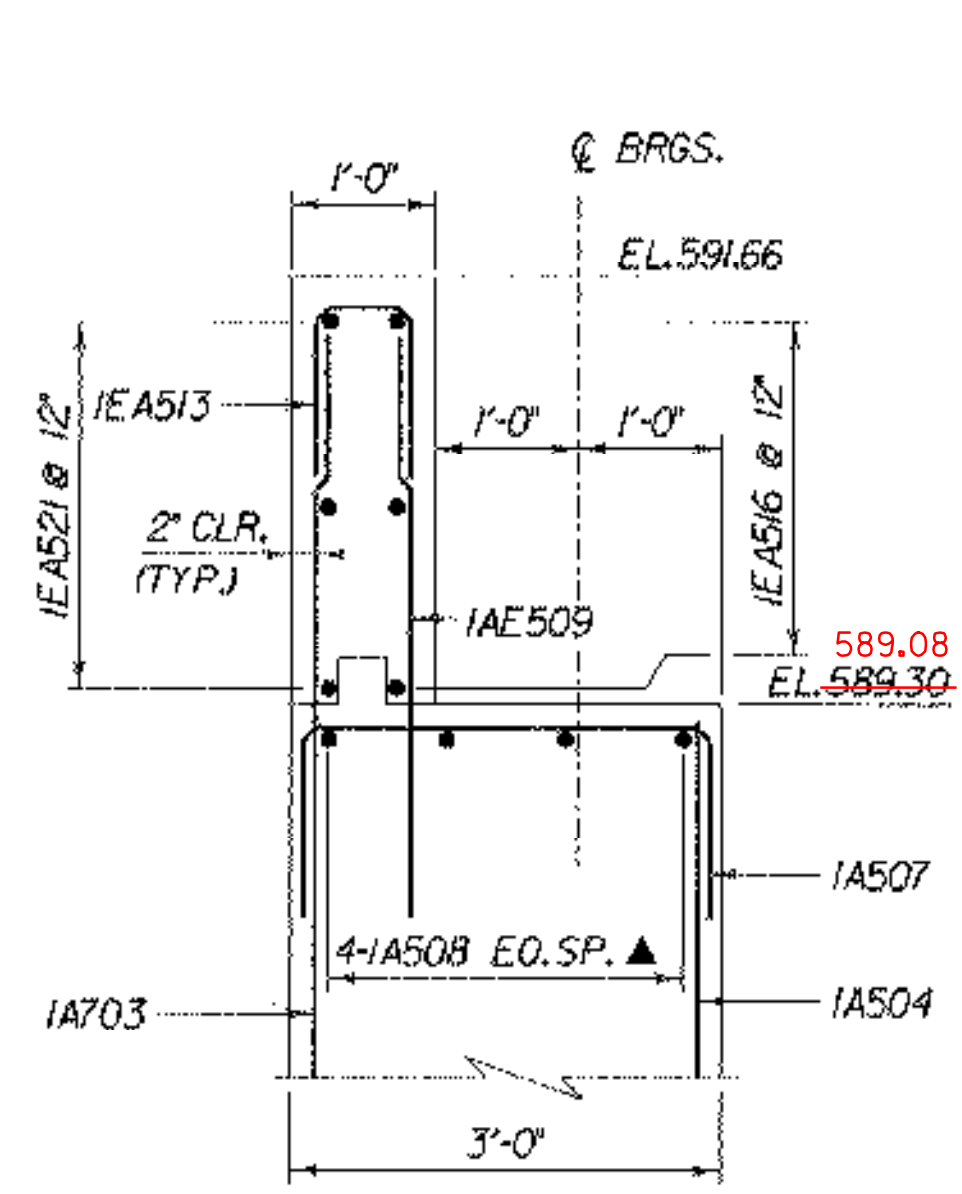


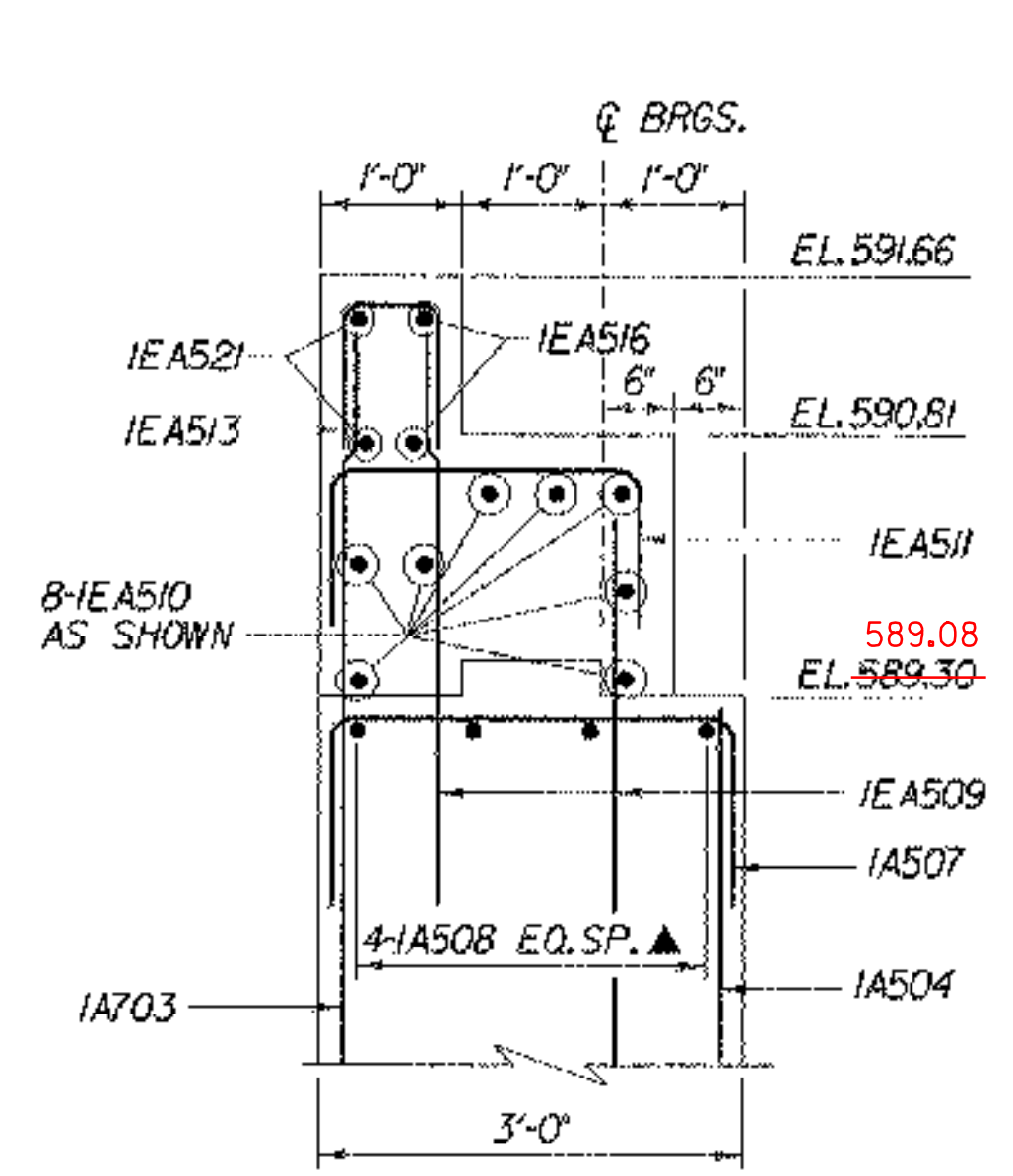
**A ABUTMENT 1 SECTION**  
 BR113  
 BR117  
 (ABUTMENT 2 SIMILAR)  
 SCALE 3/8" = 1'-0"  
 1 0 1 2 3 4



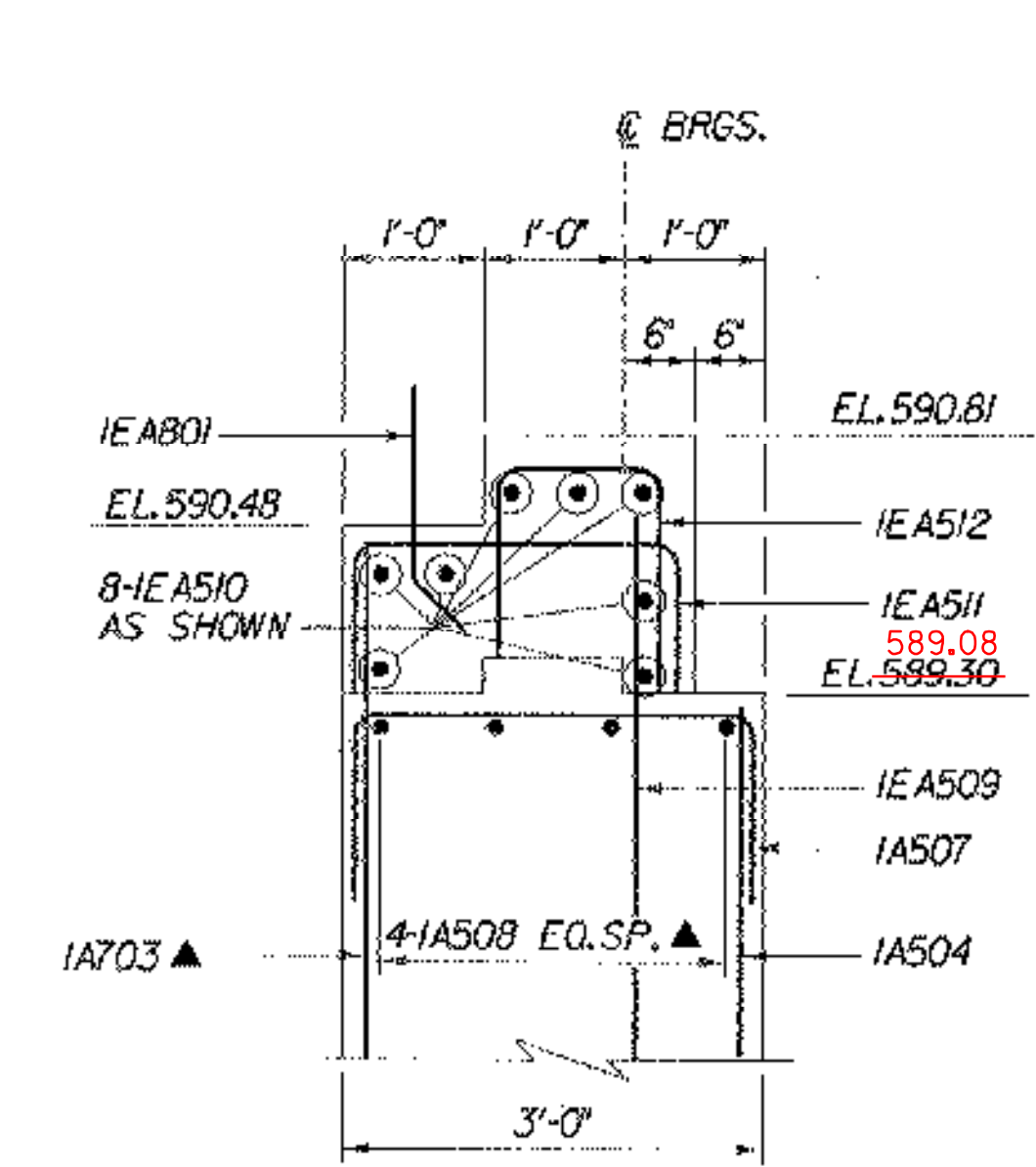
**H TYPICAL WINGWALL SECTION**  
 BR113  
 BR117  
 (WW 1 SHOWN, OTHERS SIMILAR)  
 SCALE 3/8" = 1'-0"  
 1 0 1 2 3 4



**B BACKWALL SECTION**  
 BR113  
 BR117  
 SCALE 3/4" = 1'-0"  
 1 0 1 2



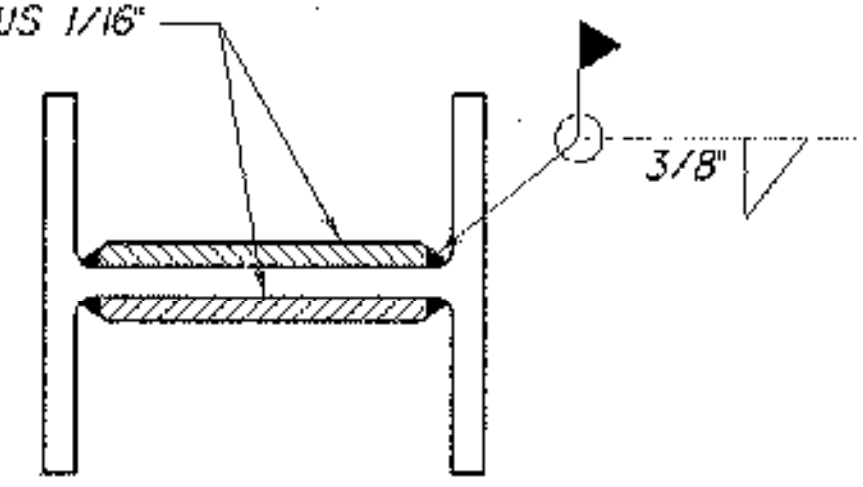
**C BACKWALL SECTION**  
 BR113  
 BR117  
 SCALE 3/4" = 1'-0"  
 1 0 1 2



**D BACKWALL SECTION**  
 BR113  
 BR117  
 SCALE 3/4" = 1'-0"  
 1 0 1 2

**NOTE:**  
 FRONT ROW OF PILES ARE  
 BATTERED, 6/4 AT ALL OTHER  
 WINGWALLS

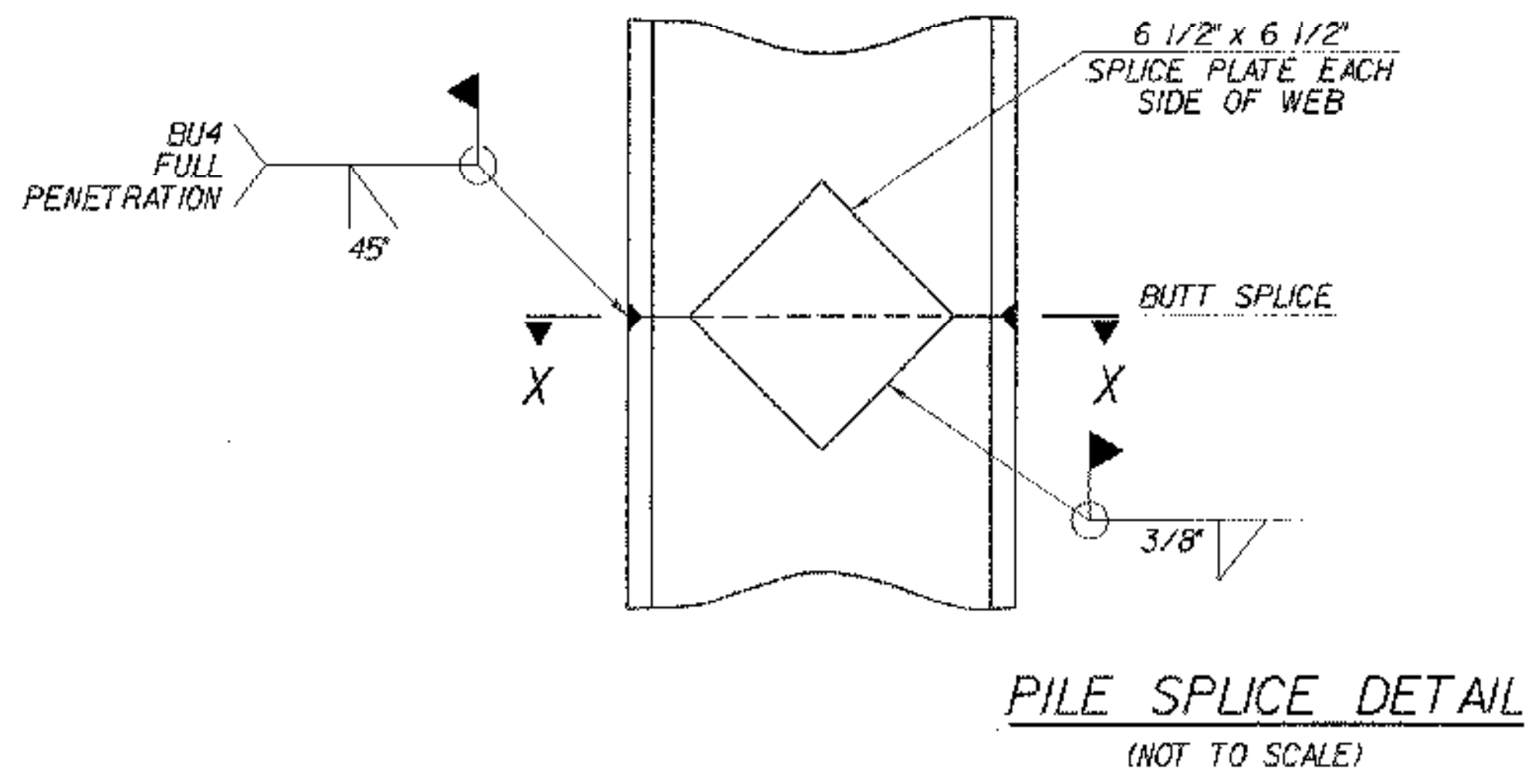
SPlice PLATES TO BE  
 THE SAME THICKNESS  
 AS PILE WEB PLUS 1/16"



**SECTION X-X**

PREFABRICATED PILE SPlice PLATES  
 MAY BE USED WITH THE APPROVAL  
 OF THE RESIDENT ENGINEER

- PILE NOTES:**
1. PILE SIZE: HP 14 x 73
  2. PILE STEEL: AASHTO M270 GRADE 50
  3. WELDING PROCEDURES TO BE APPROVED BY THE STRUCTURES ENGINEER PRIOR TO WELDING.



**PILE SPlice DETAIL**  
 (NOT TO SCALE)

- NOTES:**
1. MATERIAL FOR STEEL H-PILE SPlices SHALL CONFORM TO AASHTO M270, GRADE 50.
  2. 3" CLR, UNLESS OTHERWISE SPECIFIED ON THE PLANS.

- LEGEND:**
- NF - NEAR FACE
  - FF - FAR FACE
  - EF - EACH FACE
  - ▲ - CUT TO FIT IN FIELD

**STATE OF VERMONT  
 AGENCY OF TRANSPORTATION**

Town Of	ST. JOHNSBURY	Bridge No.	29
Highway No.	T.H. 85	Log Sta.	
		Surv. Sta.	
DEPOT HILL ROAD OVER THE PASSUMPSIC RIVER			
TYPICAL ABUTMENT REINFORCING SECTIONS			
Designed By	M. SMULLEN	Drawn by	Rm WEATHERBY
Checked By	M. OLSTAD	Date	7/2003
		Bridge Design Supervisor	P. HALSTEAD
		Date	9/2006
PROJECT	ST. JOHNSBURY	PROJECT NO.	BR0 144709
LOG. Info.			
Bridge Sheet No.	BR119	Sheet	52 OF 72

