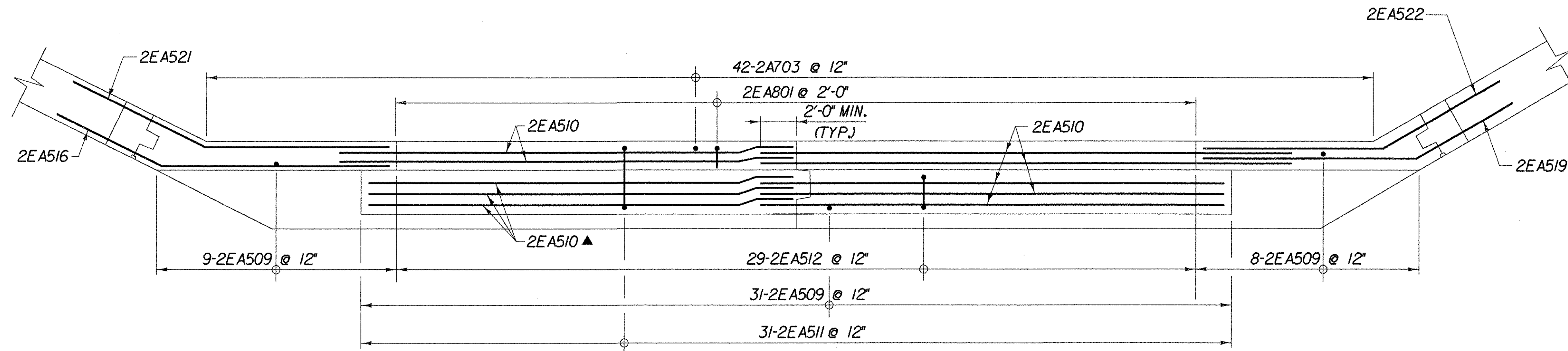


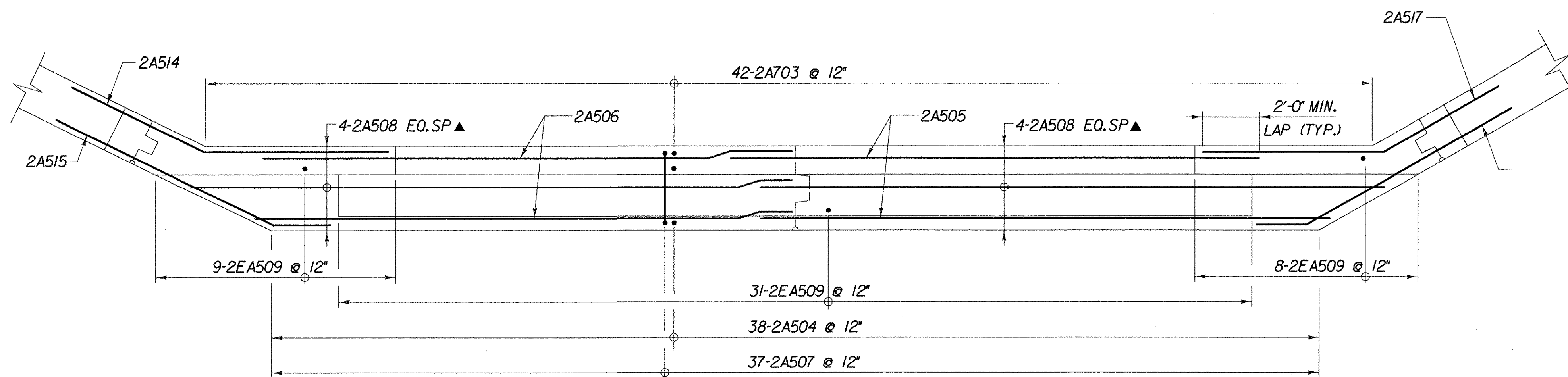
E TOP OF BACKWALL AND TOP OF PEDESTAL REINFORCING PLAN

BRII7
SCALE 3/8" = 1'-0"
1 0 1 2 3 4



F BACKWALL AND PEDESTAL REINFORCING PLAN

BRII7
SCALE 3/8" = 1'-0"
1 0 1 2 3 4



G STEM REINFORCING PLAN

BRII7
SCALE 3/8" = 1'-0"
1 0 1 2 3 4

NOTES:

1, 3' CLR. UNLESS OTHERWISE SPECIFIED ON THE PLANS.

LEGEND:

- NF = NEAR FACE
- FF = FAR FACE
- EF = EACH FACE
- ▲ = CUT TO FIT IN FIELD

**STATE OF VERMONT
AGENCY OF TRANSPORTATION**

Town Of	ST. JOHNSBURY	Bridge No. 29
Highway No.	T.H. 85	Log Sta.
DEPOT HILL ROAD OVER THE PASSUMPSIC RIVER		
ABUTMENT 2 REINFORCING DETAILS		
Designed By	M. SMULLEN	Drawn by Wm WEATHERBY
Checked By	M. OLSTAD	Bridge Design Supervisor P. HALSTEAD
Date	7/2003	Date 9/2006
PROJECT	ST. JOHNSBURY	PROJECT NO. BRO 1447(09)
I.G.C. Info.		
Bridge Sheet No.	BRII8	Sheet 51 OF 72



FILE NAME = sub\3797\mas\15\br25\1447ab2.rfl.dgn
DATE/TIME = 12/20/2006
USER = z467