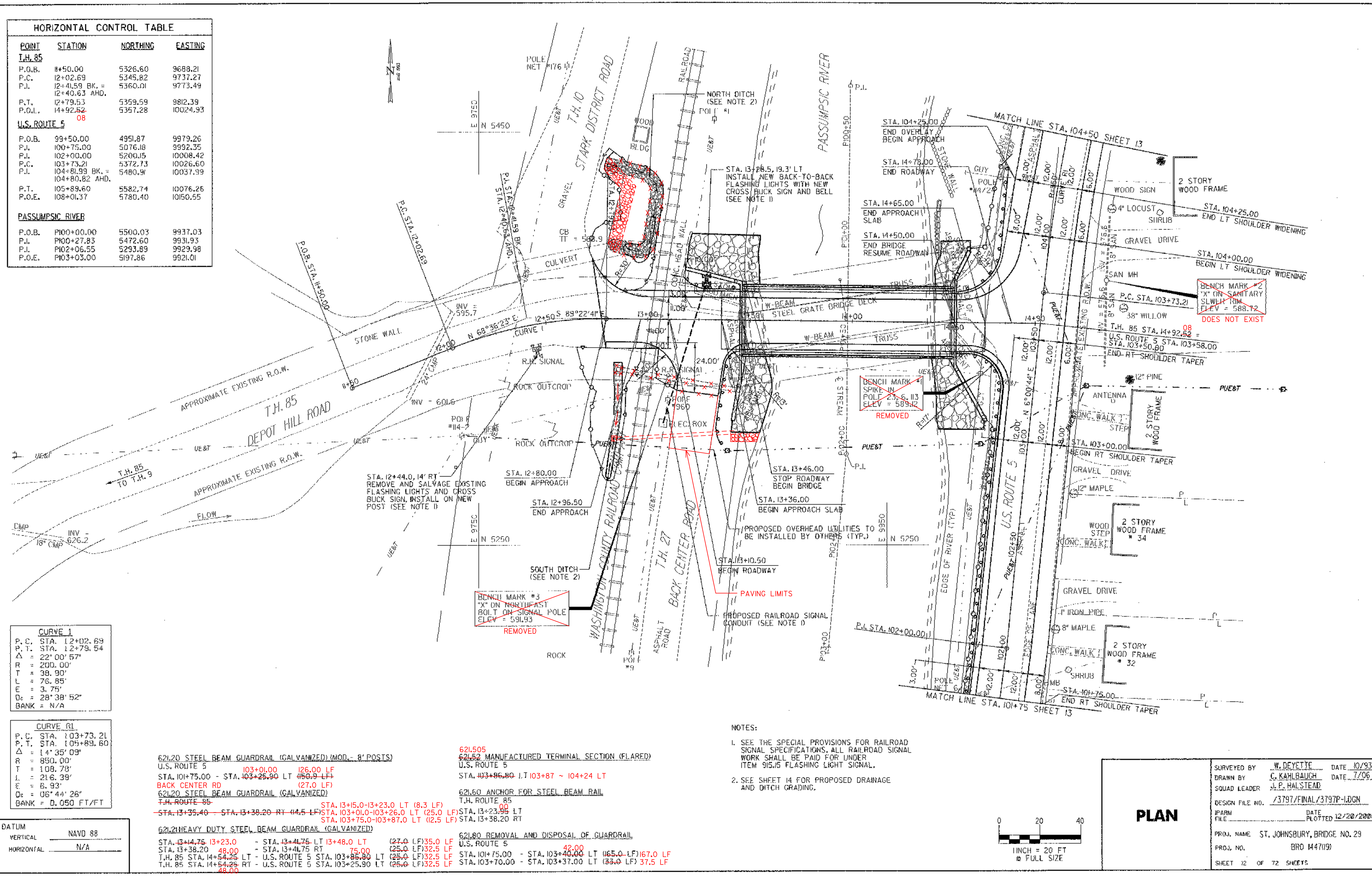


HORIZONTAL CONTROL TABLE

POINT	STATION	NORTHING	EASTING
T.H. 85			
P.O.B.	11+50.00	5326.60	9688.21
P.C.	12+02.69	5345.82	9737.27
P.L.	12+41.59 BK. = 12+40.63 AHD.	5360.01	9773.49
P.T.	12+79.53	5359.59	9812.39
P.O.L.	14+92.52	5357.28	10024.93
U.S. ROUTE 5			
P.O.B.	99+50.00	4951.87	9979.26
P.L.	100+75.00	5076.18	9992.35
P.L.	102+00.00	5200.15	10008.42
P.C.	103+73.21	5372.73	10026.60
P.L.	104+81.99 BK. = 104+80.82 AHD.	5480.91	10037.99
P.T.	105+89.60	5582.74	10076.26
P.O.E.	108+01.37	5780.40	10150.55
PASSUMPSIC RIVER			
P.O.B.	P100+00.00	5500.03	9937.03
P.L.	P100+27.83	5472.60	9931.93
P.L.	P102+06.55	5293.89	9929.98
P.O.E.	P103+03.00	5197.86	9921.01



CURVE 1

P.C.	STA. 12+02.69
P.T.	STA. 12+79.54
Δ	= 22° 00' 57"
R	= 200.00'
T	= 38.90'
L	= 76.85'
E	= 3.75'
D _c	= 28° 38' 52"
BANK	= N/A

CURVE 2

P.C.	STA. 103+73.21
P.T.	STA. 105+89.60
Δ	= 14° 35' 09"
R	= 850.00'
T	= 108.78'
L	= 216.39'
E	= 6.93'
D _c	= 06° 44' 26"
BANK	= 0.050 FT/FT

- 621.20 STEEL BEAM GUARDRAIL (GALVANIZED) (MOD. - 8' POSTS)
- U.S. ROUTE 5 STA. 103+01.00 - 126.00 LF
- STA. 101+75.00 - STA. 103+25.90 LT (450.9 LF)
- BACK CENTER RD (27.0 LF)
- 621.20 STEEL BEAM GUARDRAIL (GALVANIZED)
- T.H. ROUTE 85 STA. 13+5.0 - 13+23.0 LT (8.3 LF)
- STA. 13+35.40 - STA. 13+38.20 RT (4.5 LF)
- STA. 103+01.00 - 103+26.0 LT (25.0 LF)
- STA. 103+75.0 - 103+87.0 LT (12.5 LF)
- 621.21 HEAVY DUTY STEEL BEAM GUARDRAIL (GALVANIZED)
- STA. 13+4.75 - 13+23.0 - STA. 13+4.75 LT 13+48.0 LT (27.0 LF) 35.0 LF
- STA. 13+38.20 - 48.00 - STA. 13+4.75 RT 75.00 (25.0 LF) 32.5 LF
- T.H. 85 STA. 14+54.25 LT - U.S. ROUTE 5 STA. 103+85.80 LT (25.0 LF) 32.5 LF
- T.H. 85 STA. 14+54.25 RT - U.S. ROUTE 5 STA. 103+25.90 LT (25.0 LF) 32.5 LF
- 621.505 621.52 MANUFACTURED TERMINAL SECTION (FLARED)
- U.S. ROUTE 5 STA. 103+86.80 LT 103+87 - 104+24 LT
- 621.60 ANCHOR FOR STEEL BEAM RAIL
- T.H. ROUTE 85 STA. 13+23.95 LT
- STA. 13+38.20 RT
- 621.80 REMOVAL AND DISPOSAL OF GUARDRAIL
- U.S. ROUTE 5 STA. 101+75.00 - STA. 103+40.00 LT (165.0 LF) 167.0 LF
- STA. 103+70.00 - STA. 103+37.00 LT (33.0 LF) 37.5 LF

- NOTES:**
- SEE THE SPECIAL PROVISIONS FOR RAILROAD SIGNAL SPECIFICATIONS. ALL RAILROAD SIGNAL WORK SHALL BE PAID FOR UNDER ITEM 915.15 FLASHING LIGHT SIGNAL.
 - SEE SHEET 14 FOR PROPOSED DRAINAGE AND DITCH GRADING.



PLAN

SURVEYED BY	W. DEYETTE	DATE	10/93
DRAWN BY	G. KAHLBAUGH	DATE	7/06
SQUAD LEADER	J. P. HALSTEAD		
DESIGN FILE NO.	/3797/FINAL/3797P-1.DGN		
IPARM FILE		DATE PLOTTED	12/20/2006
PROJ. NAME	ST. JOHNSBURY, BRIDGE NO. 29		
PROJ. NO.	BRD M47(19)		
SHEET	12	OF	72 SHEETS