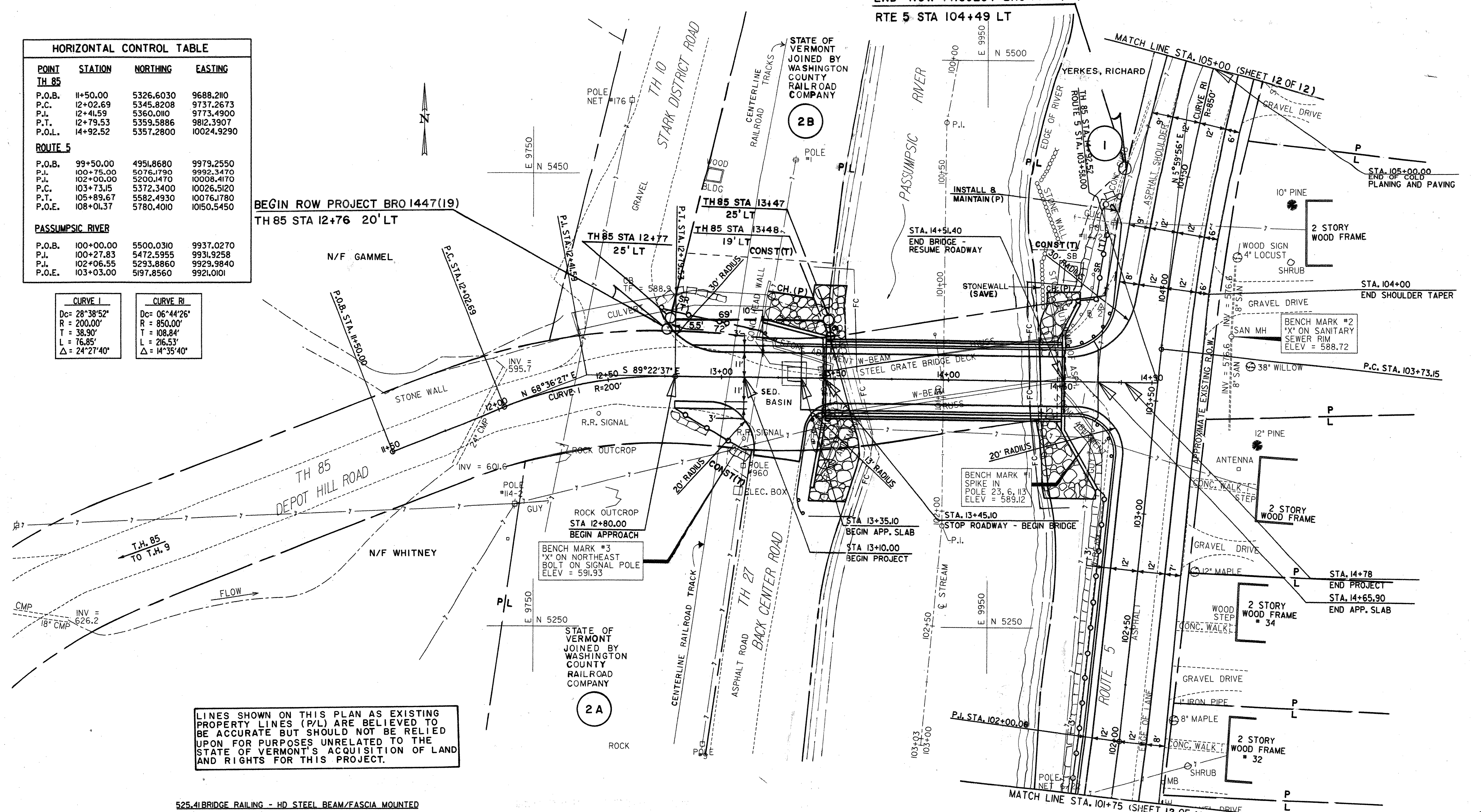


END ROW PROJECT BRO 1447(19)
 RTE 5 STA 104+49 LT

HORIZONTAL CONTROL TABLE			
POINT	STATION	NORTHING	EASTING
TH 85			
P.O.B.	11+50.00	5326.6030	9688.210
P.C.	12+02.69	5345.8208	9737.2673
P.L.	12+41.59	5360.0110	9773.4900
P.T.	12+79.53	5359.5886	9812.3907
P.O.L.	14+92.52	5357.2800	10024.9290
ROUTE 5			
P.O.B.	99+50.00	4951.8680	9979.2550
P.L.	100+75.00	5076.1790	9992.3470
P.C.	102+00.00	5200.1470	10008.4170
P.T.	103+73.15	5372.3400	10026.5120
P.O.E.	105+89.67	5582.4930	10076.1780
P.O.L.	108+01.37	5780.4010	10150.5450
PASSUMPSIC RIVER			
P.O.B.	100+00.00	5500.0310	9937.0270
P.L.	100+27.83	5472.5955	9931.9258
P.C.	102+06.55	5293.8860	9929.9840
P.O.E.	103+03.00	5197.8560	9921.0101

CURVE I	CURVE RI
Dc= 28°38'52"	Dc= 06°44'26"
R = 200.00'	R = 850.00'
T = 38.90'	T = 108.84'
L = 76.85'	L = 216.53'
Δ = 24°27'40"	Δ = 14°35'40"

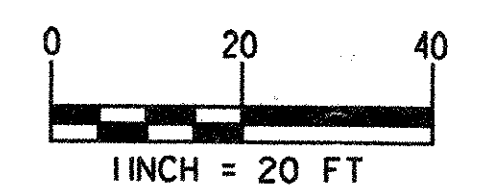


LINES SHOWN ON THIS PLAN AS EXISTING PROPERTY LINES (P/L) ARE BELIEVED TO BE ACCURATE BUT SHOULD NOT BE RELIED UPON FOR PURPOSES UNRELATED TO THE STATE OF VERMONT'S ACQUISITION OF LAND AND RIGHTS FOR THIS PROJECT.

- 525.41 BRIDGE RAILING - HD STEEL BEAM/FASCIA MOUNTED
 STA. 13+42.1 - STA. 14+53.9 RT (111.8 FT)
 STA. 13+42.1 - STA. 14+53.9 LT (111.8 FT)
- 621.20 STEEL BEAM GUARDRAIL W/8 FT POSTS (MOD.)
 STA. 101+75 - STA. 103.29.7 (154.7 FT)
- 621.20 STEEL BEAM GUARDRAIL
 STA. 13+17.5 - STA. 13+42.1 LT (24.6 FT)
 STA. 13+33.9 - STA. 13+42.1 RT (52 FT)
 STA. 14+53.9 - STA. 14+73.0 LT (119.1 FT)
 STA. 14+53.9 - STA. 14+67.1 RT (13.2 FT)

- 621.60 ANCHOR FOR STEEL BEAM RAIL
 STA. 13+23.5 LT
 STA. 13+33.9 RT
- 621.80 REMOVAL AND DISPOSAL OF GUARDRAIL
 STA. 101+75 - STA. 103+36.9 LT (161.9 FT)

NOTE:
 1. THE CULVERT'S SIZE, TYPE AND CONDITION WILL BE DETERMINED AT A LATER DATE.



PLAN

SURVEYED BY	W. DEYETTE	DATE	10/93
DRAWN BY	J. LUKOVITS	DATE	6/00
SQUAD LEADER	T. KARIS		
DESIGN FILE NO.	/3797/FINAL/3797PLDGN		
IPARM FILE		DATE PLOTTED	
PROJ. NAME	ST. JOHNSBURY, BRIDGE NO. 29		
PROJ. NO.	BRO 1447(19)		
ROW Sheet 11 of 12 Sheets	11 OF 72		

FILE NAME = u:\3797\mstr\03\Final\3797p-1.dgn
 DATE/TIME = 08 SEP 2000
 USER = 597