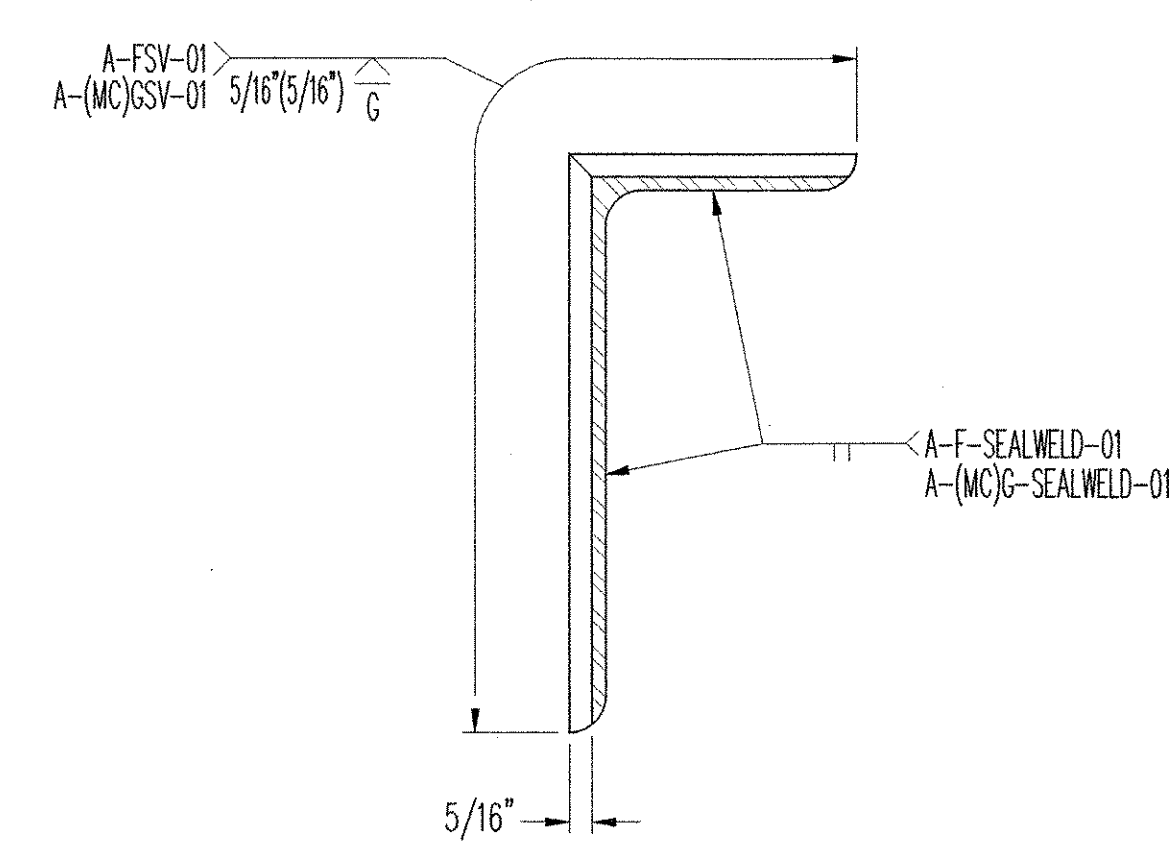
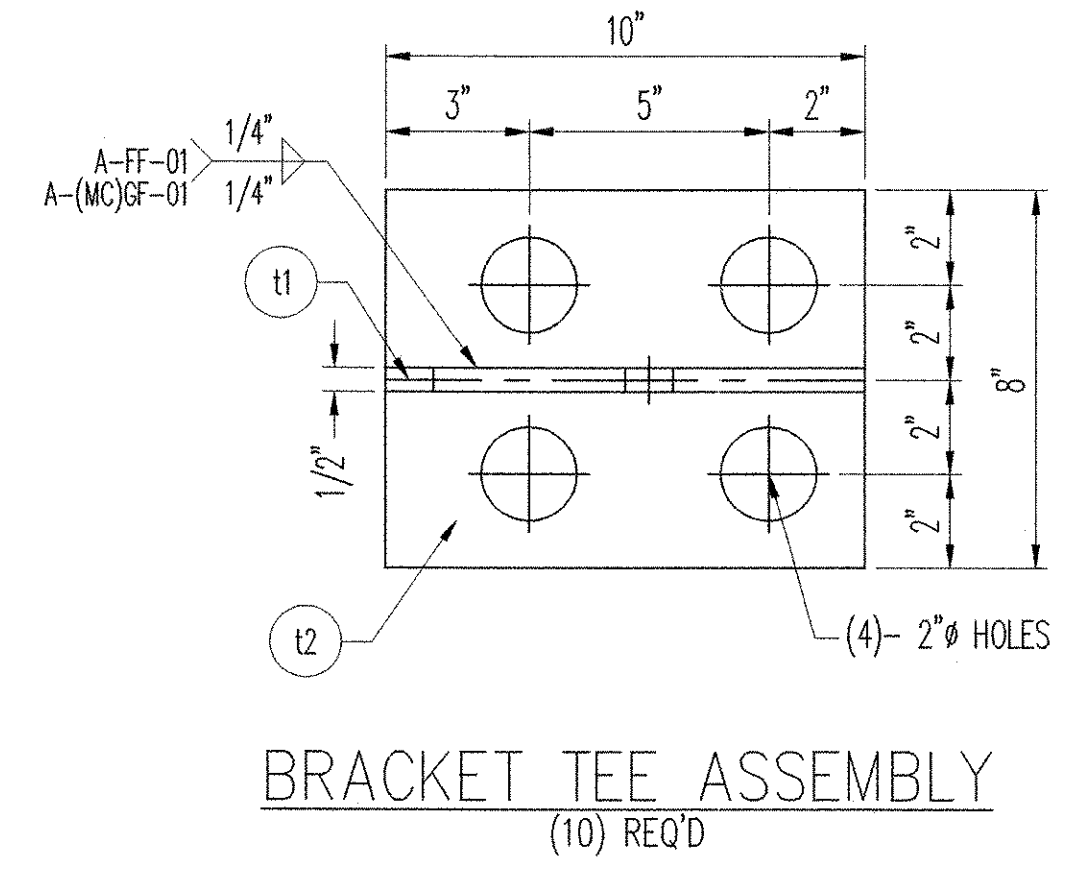
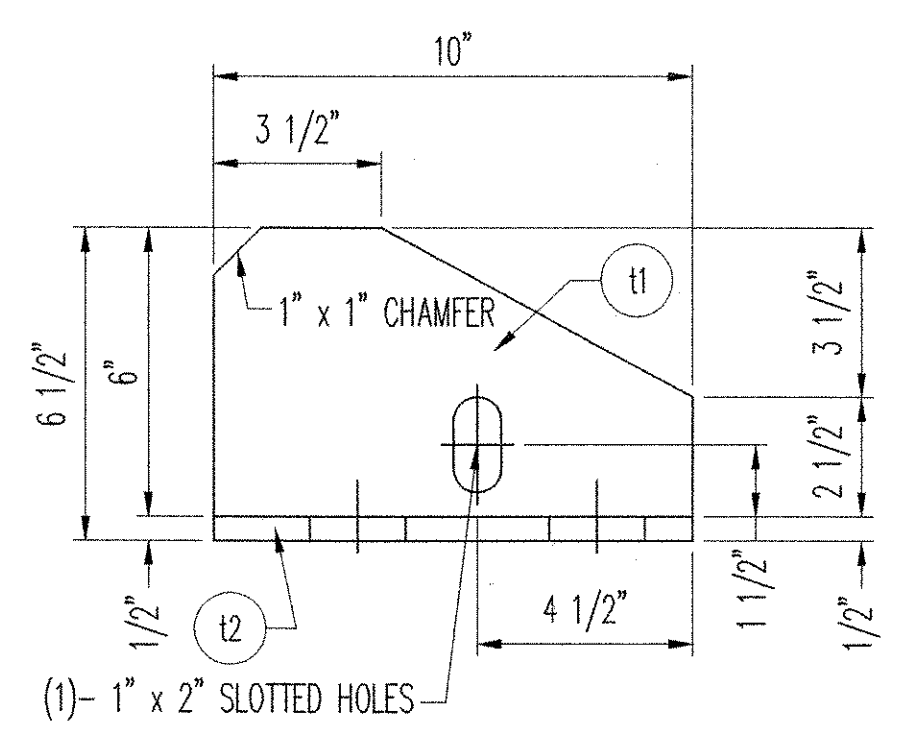
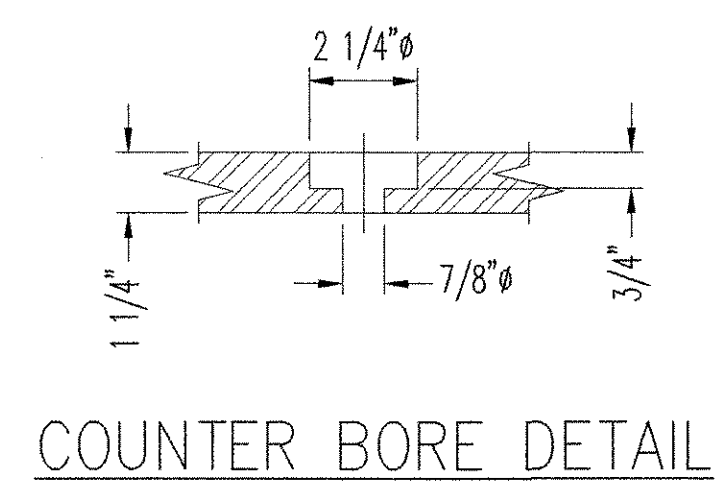


TEMP.	"A" DIST.	"B" DIST.
0° F	1 3/8"	3 3/8"
15° F	1 1/4"	3 1/4"
30° F	1 1/8"	3 1/8"
45° F	1"	3"
60° F	7/8"	2 7/8"
75° F	3/4"	2 3/4"
90° F	5/8"	2 5/8"
105° F	1/2"	2 1/2"

SECTION THRU JOINT AT GIRDER
 * DIMENSION IS THEORETICAL AND MAY CHANGE DEPENDING UPON THE OUTCOME OF THE BEAM PROFILES.



ANGLE SHOP SPLICE DETAIL
 AT & CROWN ONLY



COUNTER BORE DETAIL

MK	QTY.	DESCRIPTION	MATERIAL	LENGTH	REMARKS	PART NO.
		LOOSE ITEMS:				
2h4	10	HB 3/4 x 2 1/4	A325 MG	(8)		23-121
2h8	44	RB 10 CONT. THREAD	A36	0'-6"	(40) HDG	18-27
2h10	88	HN 10 HVY	A563DH	(80) HDG		25-15
2h11	88	FB 3/8 x 3	A36	0'-3"	(80) HDG	16-73

NOTE: ALL MATERIALS SPECIFICATION DESCRIPTIONS ARE ASTM, UNLESS OTHERWISE NOTED.

GENERAL NOTES

ALL MATERIALS, CONSTRUCTION AND DESIGN SHALL CONFORM TO THE STATE OF VERMONT, AGENCY OF TRANSPORTATION STANDARD SPECIFICATION FOR CONSTRUCTION, DATED 2001, AND ITS LATEST REVISIONS, AND THE AASHTO STANDARD SPECIFICATIONS FOR HIGHWAY BRIDGES, SEVENTEENTH EDITION DATED 2002, AND ITS LATEST REVISION.

WELDING SHALL MEET THE REQUIREMENTS OF THE ANSI/AASHTO/AWS D1.5 BRIDGE WELDING CODE AS MODIFIED BY STANDARD SPECIFICATIONS.

STUD ANCHORS SHALL BE AASHTO M169 (ASTM A-108) AND AUTOMATIC END WELDED WITH COMPLETE FUSION. A-F-F-STUD-REP-01 / A-(MC)G-F-STUD-REP-01 OR A-SM-STUD-REP-01 WILL BE USED, AS REQUIRED, TO REPAIR STUDS.

ANY TIGHTLY ADHERENT WELD SPATTER NEED NOT BE REMOVED IN COATING AREAS TO BE CAST IN CONCRETE.

ALL STEEL COMPONENTS SHALL BE AASHTO M270 GRADE 36 GALVANIZED OR METALIZED AS PER SUBSECTION 516.15 (U.N.O.).

PRIOR TO GALVANIZING OR METALIZING, ALL CORNERS AND EDGES OF STEEL PLATES, SHAPES, ETC., SHALL BE GROUND TO A 1/16" INCH RADIUS.

PREFORMED FABRIC MATERIAL SHALL BE CONTINUOUS AND SHALL CONFORM TO SUBSECTION 707.07.

BUTYL RUBBER TAPE SHALL CONFORM TO AASHTO SPECIFICATION M-198, TYPE II.

FABRIC TROUGH SHALL BE THOROUGHLY CLEANED AND FLUSHED AFTER PAVING OPERATION.

THE EXPANSION JOINT SHALL BE SHOP ASSEMBLED AND SHIPPED AS ONE UNIT.

REV.	DESCRIPTION	DATE	TMB	TKE
1	REVISED GENERAL NOTES & ANGLE SHOP SPLICE DETAIL	1-10-05	TMB	TKE

LOCATION	ITEM	QUANTITY
BRIDGE — 11		
PROJECT — HDP 9281 (1)		
CITY — BARRE		
P.O. NO. — C-1455		
DESIGNER — VERMONT D.O.T.		
CUSTOMER — WINTERSET INC.		

SCALE:	DRAWN BY:	CHECKED BY:	DATE:	SHEET
N.T.S.	T.BOWERS	T.ELLER	10-25-04	2 OF 3
DESCRIPTION:	PROJECT NUMBER:	PRODUCT CODE:	RELEASE:	SHEET
VERMONT EXPANSION JOINT STANDARD DETAILS	12550	1042		2
COUNTY OF WASHINGTON, VERMONT				

D.S. BROWN
 300 E. CHERRY STREET
 NORTH BALTIMORE, OHIO 45872
 419.257.3561
 FAX: 419.257.0332
 4201 NOREX DRIVE
 CHASKA, MINNESOTA 55318
 952.368.3000
 FAX: 952.448.7000
 DSBROWN.COM

RECEIVED
 JAN 12 2005
 1/21/2005