

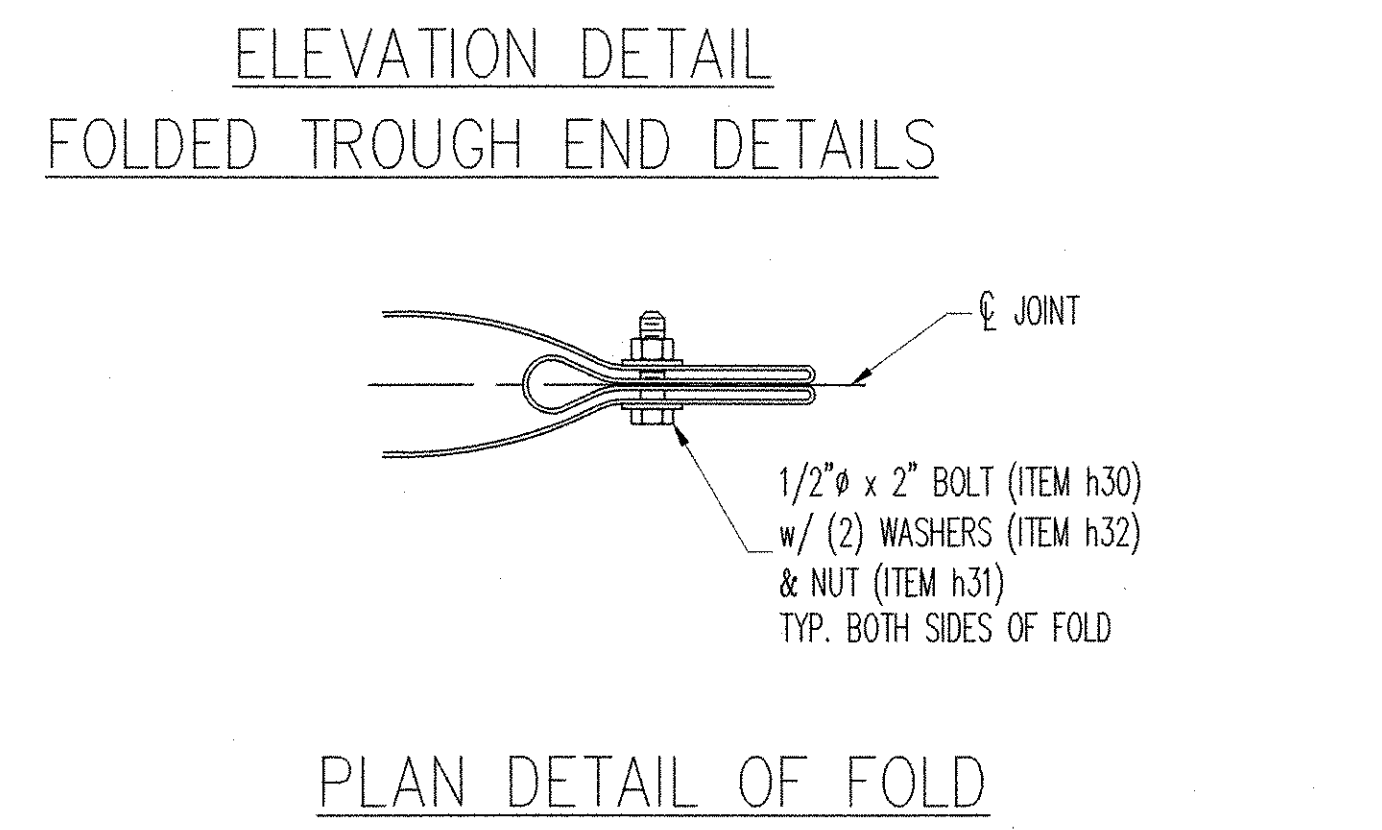
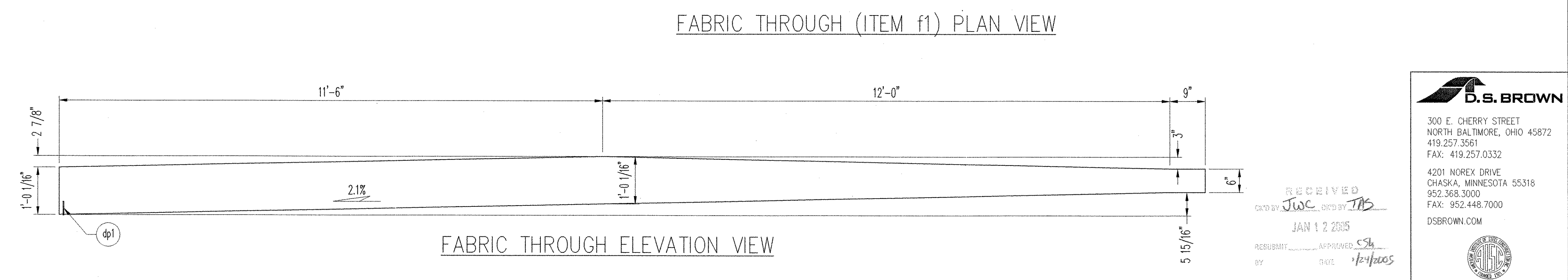
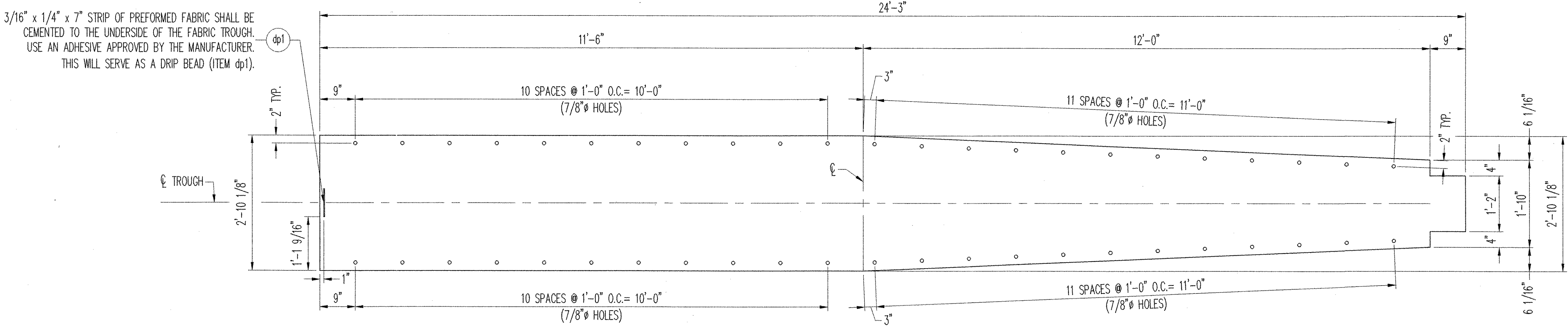
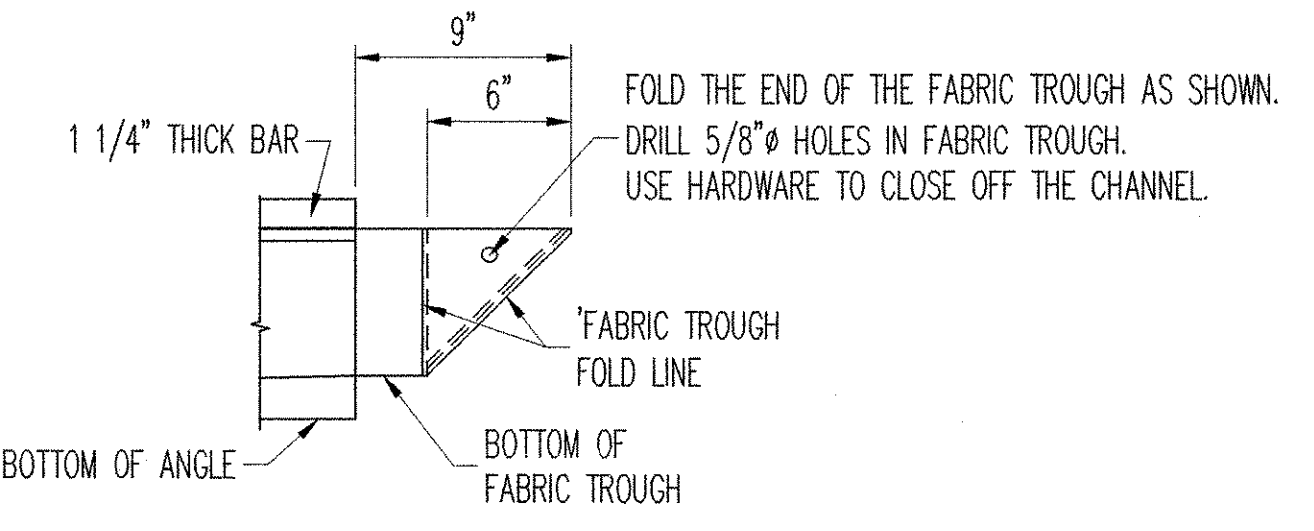
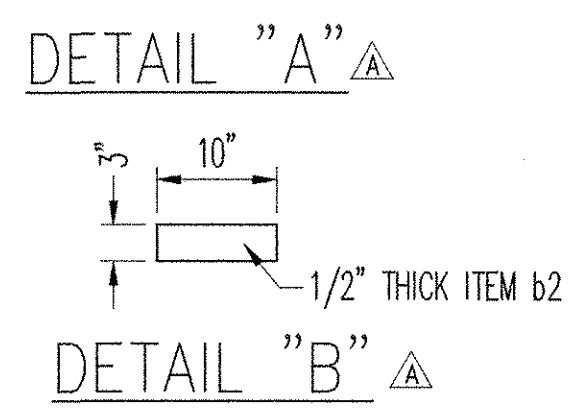
PLAN VIEW NO. 1
 CITY OF BARRE
 BRIDGE NO. 11
 ABUTMENT 2
 VERMONT EXP. JOINT
 (1) JOINT TOTAL

SHOP NOTES:
 1) WORK WITH SHEET 2.
 2) COAT BOLTS AND INSERTS WITH NEVER SEIZE GREASE PRIOR TO ASSEMBLY.
 3) WRENCH TIGHTEN BOLTS AFTER ASSEMBLY UNIT.
 4) SEAL ALL ACCESSIBLE JOINTS FOR GALVANIZING.

CONTRACTOR NOTES:
 REMOVE SHIPPING ANGLES AND REPLACE BOLTS WITH 3/4" x 2 1/4" BOLTS.
 REUSE EXISTING FLAT WASHERS.
 COAT BOLT THREADS WITH ANTI SEIZE GREASE PRIOR TO ASSEMBLY.

MK	QTY.	DESCRIPTION	MATERIAL	LENGTH	REMARKS	PART NO.
1A	1	EXP. JOINT ASSEMBLY		23'-6"	HJD	
a1	1	L 8 x 4 x 1/2	A36	11'-6"	SEE DETAIL "C" FOR CUT	15-100
a2	1	L 8 x 4 x 1/2	A36	11'-6"		15-100
a3	1	L 8 x 4 x 1/2	A36	12'-0"		15-100
a4	1	L 8 x 4 x 1/2	A36	12'-0"		15-100
p1	1	PL 1 1/4 x 5	A36	11'-6"		16-168
p2	1	PL 1 1/4 x 5	A36	11'-6"		16-168
p3	1	PL 1 1/4 x 5	A36	12'-0"		16-168
p4	1	PL 1 1/4 x 5	A36	12'-0"		16-168
b1	1	FB 1/2 x 4	A36	1'-0"	SEE DETAIL "A"	16-96
b2	1	FB 1/2 x 3	A36	0'-10"	SEE DETAIL "B"	16-93
t1	10	PL 1/2 x 6	A36	0'-10"		19-16
t2	10	PL 1/2 x 8	A36	0'-10"		19-16
h1	20	WS 3/4 x 10	A108			29-19
h2	20	WS 3/4 x 10	A108		BEND 45° @ 3"	29-19
h3	4	L 4 x 4 x 1/2	A36 B	0'-11"		15-62
h4	38	HB 3/4 x 2 1/4	A325 MG			23-121
h5	8	HB 3/4 x 3 3/4	A325 MG			23-136
h6	46	FW 3/4	F436 MG			27-8
h7	46	MI 3/4 FERRULE LOOP INSERT	ZP		DAYTON/RICHMOND F-42	35-9
f1	1	EP 3/16 x 34 1/8		24'-3"	3 PLY. FABRIC TROUGH	
db1	1	EP 3/16 x 1/4		0'-7"	3 PLY. DRIP BEAD	
h30	1	HB 1/2 x 2	A307 MG		TROUGH CLOSURE	23-534
h31	1	HN 1/2	A563DH MG		TROUGH CLOSURE	25-2
h32	2	FW 1/2	F436 MG		TROUGH CLOSURE	27-2
m1	2	MI 1/8 x 1 1/2 BUTYL RUBBER TAPE	NEWMASTER CORR #385845	50' ROLL		31-134
m2	1	MI ANTI SEIZE GREASE				

NOTE: ALL MATERIALS SPECIFICATION DESCRIPTIONS ARE ASTM, UNLESS OTHERWISE NOTED.



D.S. BROWN
 300 E. CHERRY STREET
 NORTH BALTIMORE, OHIO 45872
 419.257.3561
 FAX: 419.257.0332
 4201 NOREX DRIVE
 CHASKA, MINNESOTA 55318
 952.368.3000
 FAX: 952.448.7000
 DSBROWN.COM

RECEIVED
 JAN 12 2005
 PROJECT: VERMONT EXP. JOINT
 DRAWN BY: T.BOWERS
 CHECKED BY: TELLER

REV.	DESCRIPTION	DATE	TMB	TKE
1	ADDED ITEM b1 & b2 & CLIP LEG OF ITEM a1	1-10-05		

LOCATION	ITEM	QUANTITY
BRIDGE — 11		
PROJECT — HDP 9281 (1)		
CITY — BARRE		
P.O. NO. — C-1455		
DESIGNER — VERMONT D.O.T.		
CUSTOMER — WINTerset INC.		

SCALE	DRAWN BY	CHECKED BY	DATE	SHEET
N.T.S.	T.BOWERS	TELLER	10-25-04	1 OF 3
PROJECT NUMBER	PRODUCT CODE	RELEASE	SHEET	
12550	1042		081	1