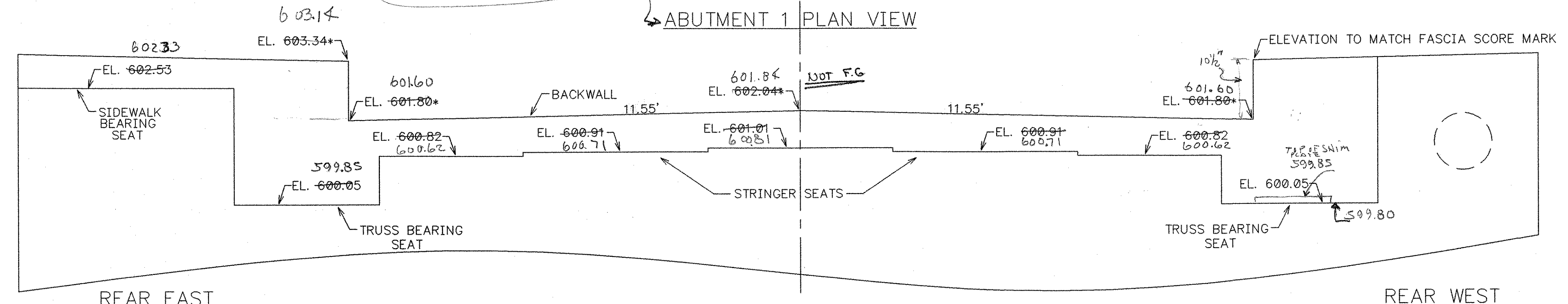
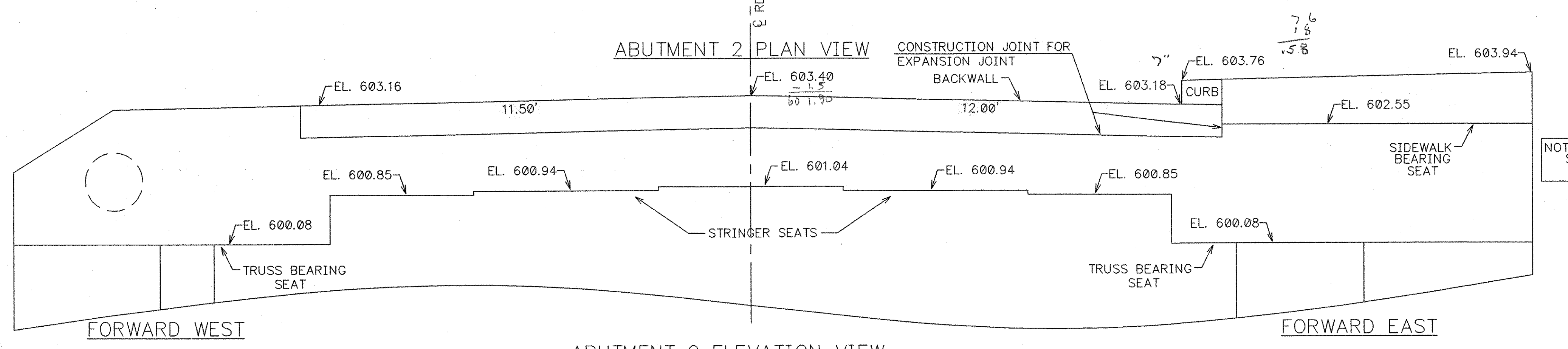
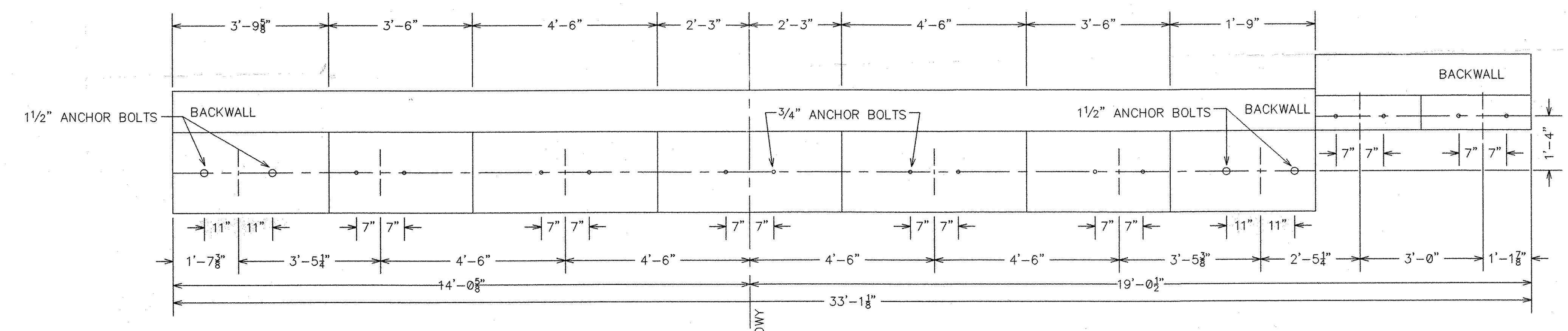


NOTE: THESE ELEVATIONS ARE NOT SAME AS INDICATED IN THE CONTRACTORS PLANS

NOTE - ELEVATIONS SHOWN AT FACE OF BACKWALL.



ABUTMENT 1 ELEVATION VIEW
* THESE ELEVATIONS ARE TO BE VARIFIED OR DETERMINED AFTER THE TRUSS IS SET.



NOTE - ELEVATIONS SHOWN AT FACE OF BACKWALL.

ABUTMENT 2 ELEVATION VIEW

RECEIVED
NOV 13 2004
DATE 12-14-04

FABRICATOR: U.S. BRIDGE
201 WHEELING AVE.
P.O. BOX 757
CAMBRIDGE, OHIO 43725
1-888-872-7434

NO.	DATE	REVISIONS	BY
1	11/29/04	ELEVATIONS REVISED	JEC

112'-5" TRUSS BRIDGE
GRANITE STREET
CITY OF BARRE
WASHINGTON COUNTY, VERMONT

21'-0" RDWY + 6' SW
PROJ. NO. HDP 9281(1)
BRIDGE # 11

DESIGN SAF
CHECK/DATE AG 10/8/04

DRAWN JEC
DATE OCTOBER 20, 2004
FABRICATOR U.S. BRIDGE

DRAWING NO. ABUTMENT ELEVATIONS
SHEET 11 OF 11
080 58

NOTE: DRAWINGS RELATIVE DO NOT SCALE