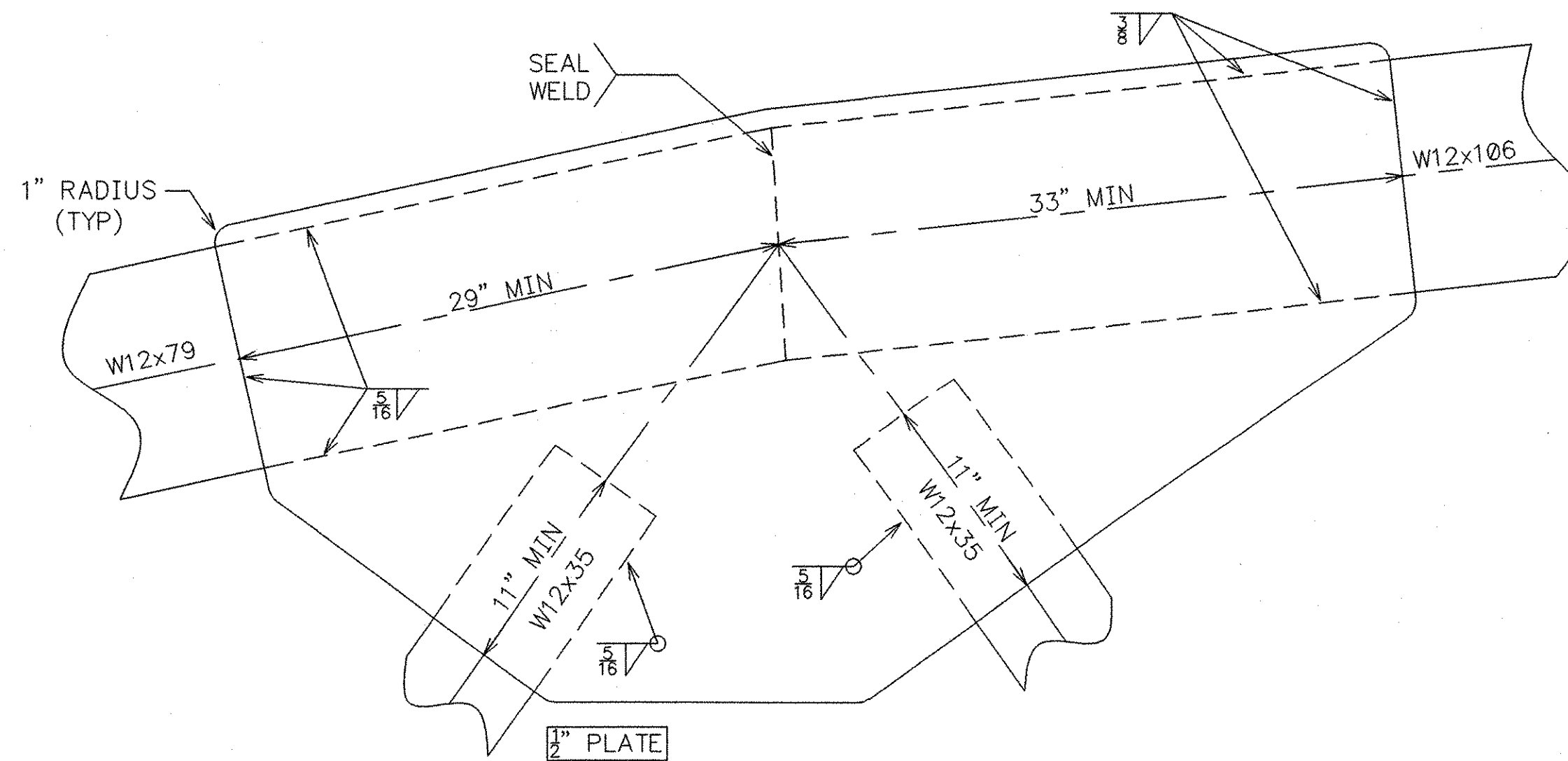
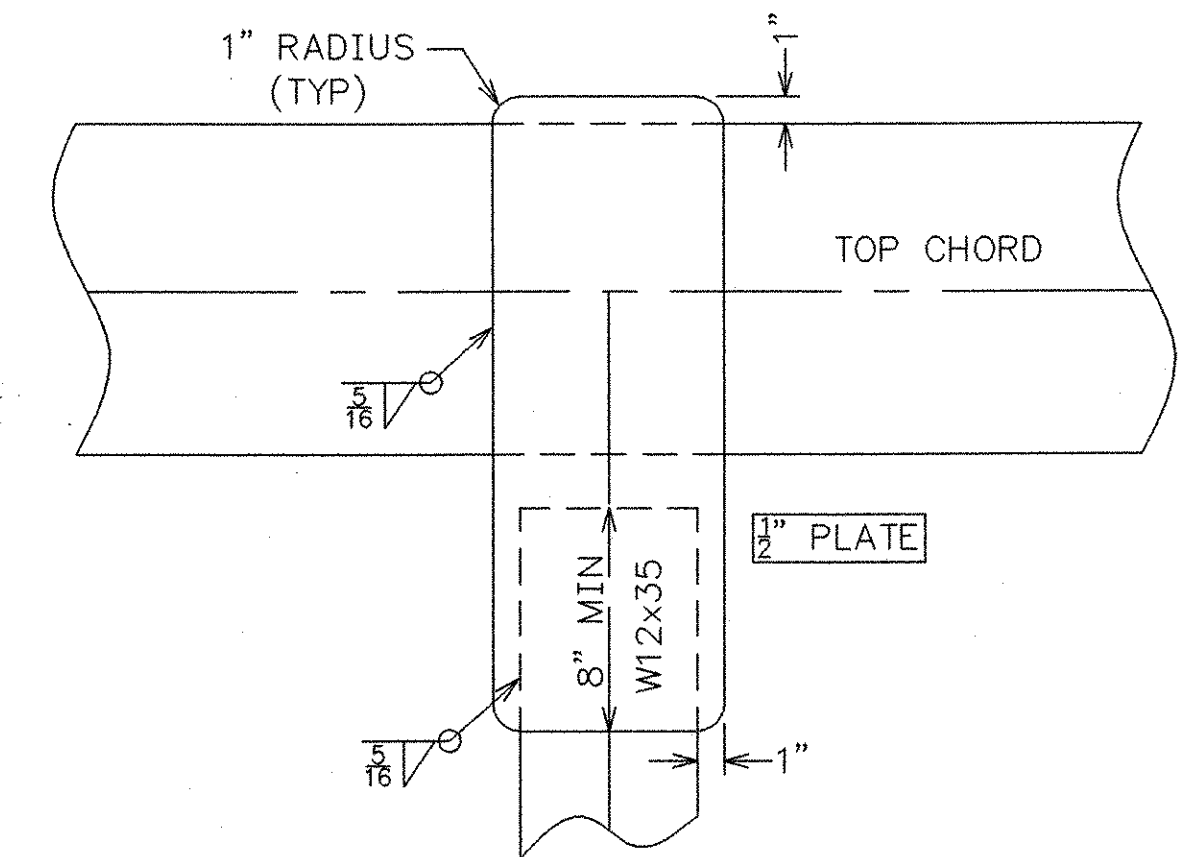


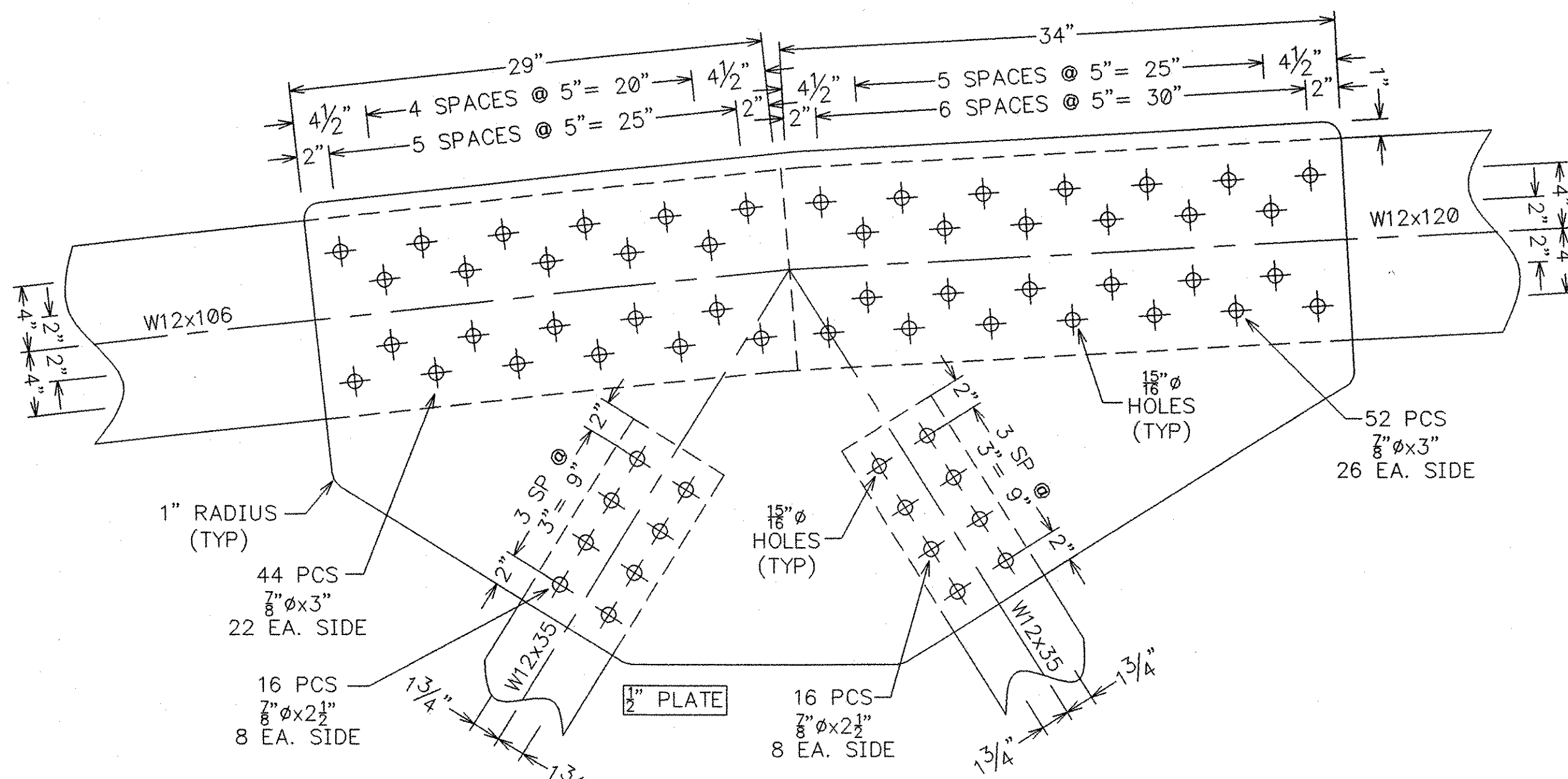
GUSSET PLATES U2 & U16
8 REQ'D
(BOTH SIDES TRUSS 1)
(BOTH SIDES TRUSS 2)



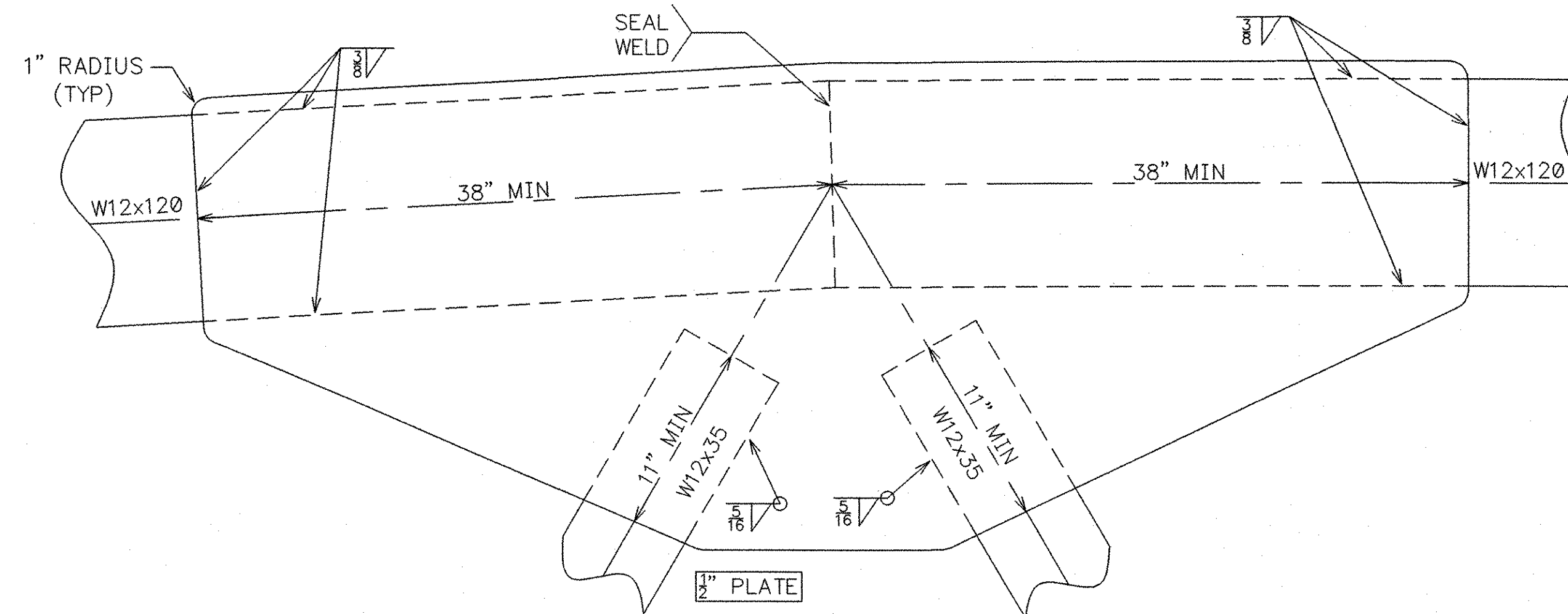
GUSSET PLATES U4 & 14
8 REQ'D
(BOTH SIDES TRUSS 1)
(BOTH SIDES TRUSS 2)



GUSSET PLATES U3, U5, U7, U9, U11, U13, & U15
28 REQ'D



GUSSET PLATES U6 & U12
8 REQ'D
(BOTH SIDES TRUSS 1)
(BOTH SIDES TRUSS 2)



GUSSET PLATES U8 & U10
8 REQ'D
(BOTH SIDES TRUSS 1)
(BOTH SIDES TRUSS 2)

NOTE: 1/4"±1/8" HOLD BACK ON EACH WELD ON EACH SIDE FOR CHANGE OF PLANE WELDS.

NOTE: DRAWINGS RELATIVE DO NOT SCALE

RECEIVED
NOV 13 2004
DATE 12-14-04

FABRICATOR: U.S. BRIDGE
CONTACT: 201 WHEELING AVE.
P.O. BOX 757
CAMBRIDGE, OHIO 43725
1-888-872-7434

NO.	DATE	REVISIONS	BY	112'-5" TRUSS BRIDGE GRANITE STREET CITY OF BARRE WASHINGTON COUNTY, VERMONT	21'-0" RDWY + 6' SW PROJ. NO. HDP 9281(1) BRIDGE # 11
				DESIGN SAF	DRAWN JEC
				CHECK/DATE AG 10/8/04	DATE OCTOBER 20, 2004
				FABRICATOR U.S. BRIDGE	DRAWING NO. TOP CHORD GUSSET PLATES
					SHEET 10 OF 11

07255