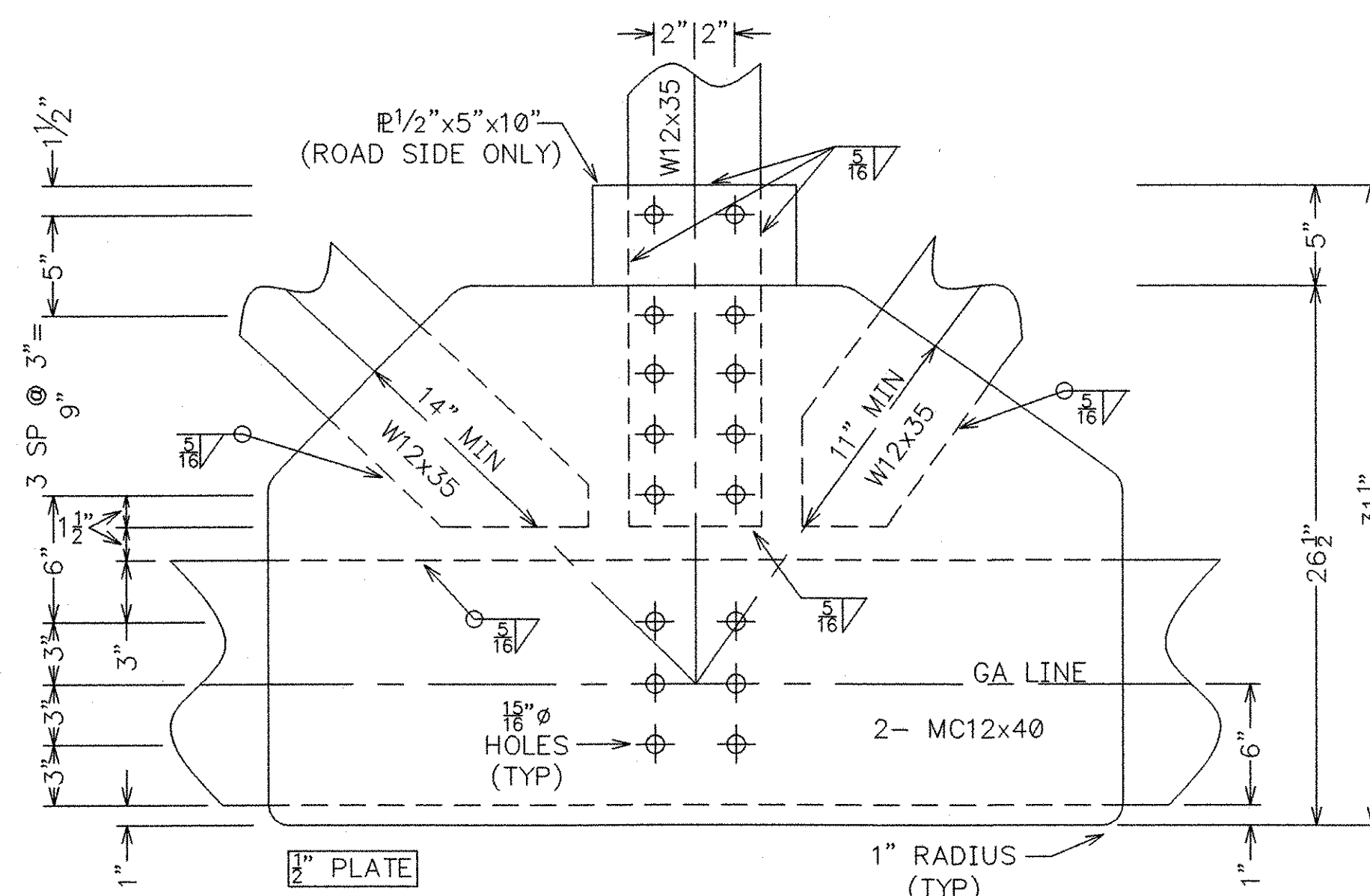
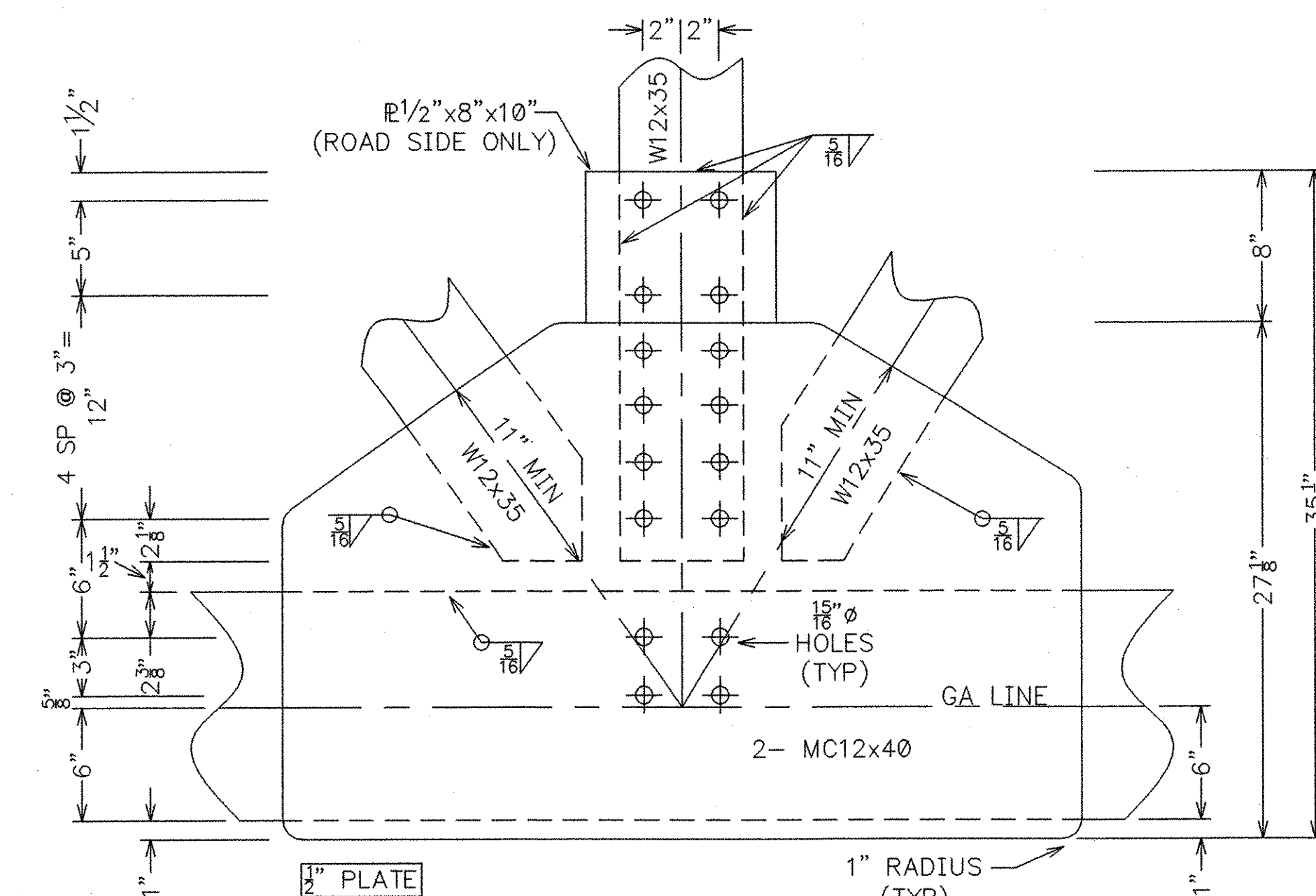


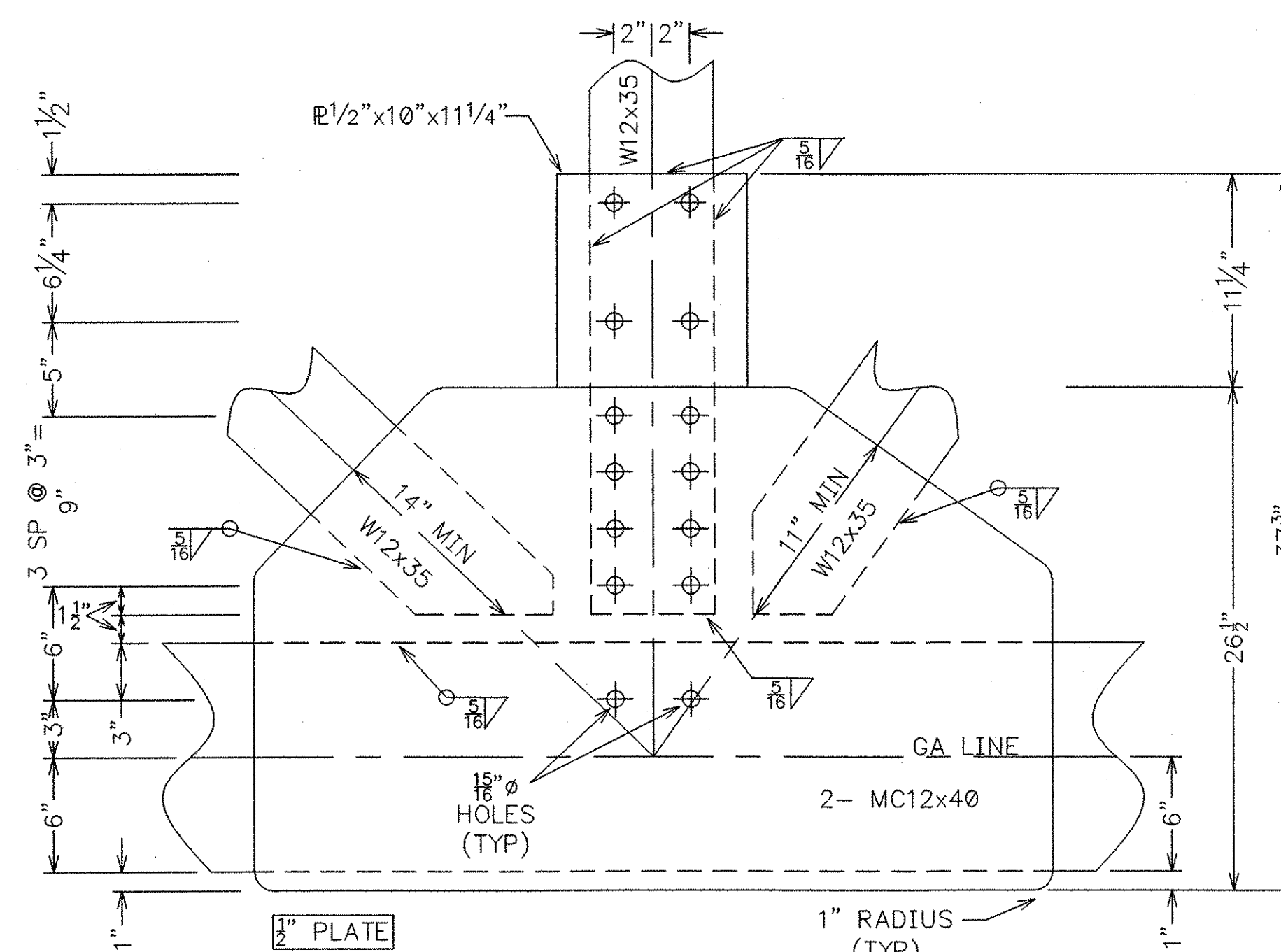
GUSSET PLATE L1 & L17  
8 REQ'D  
(BOTH SIDES TRUSS 1)  
(BOTH SIDES TRUSS 2)



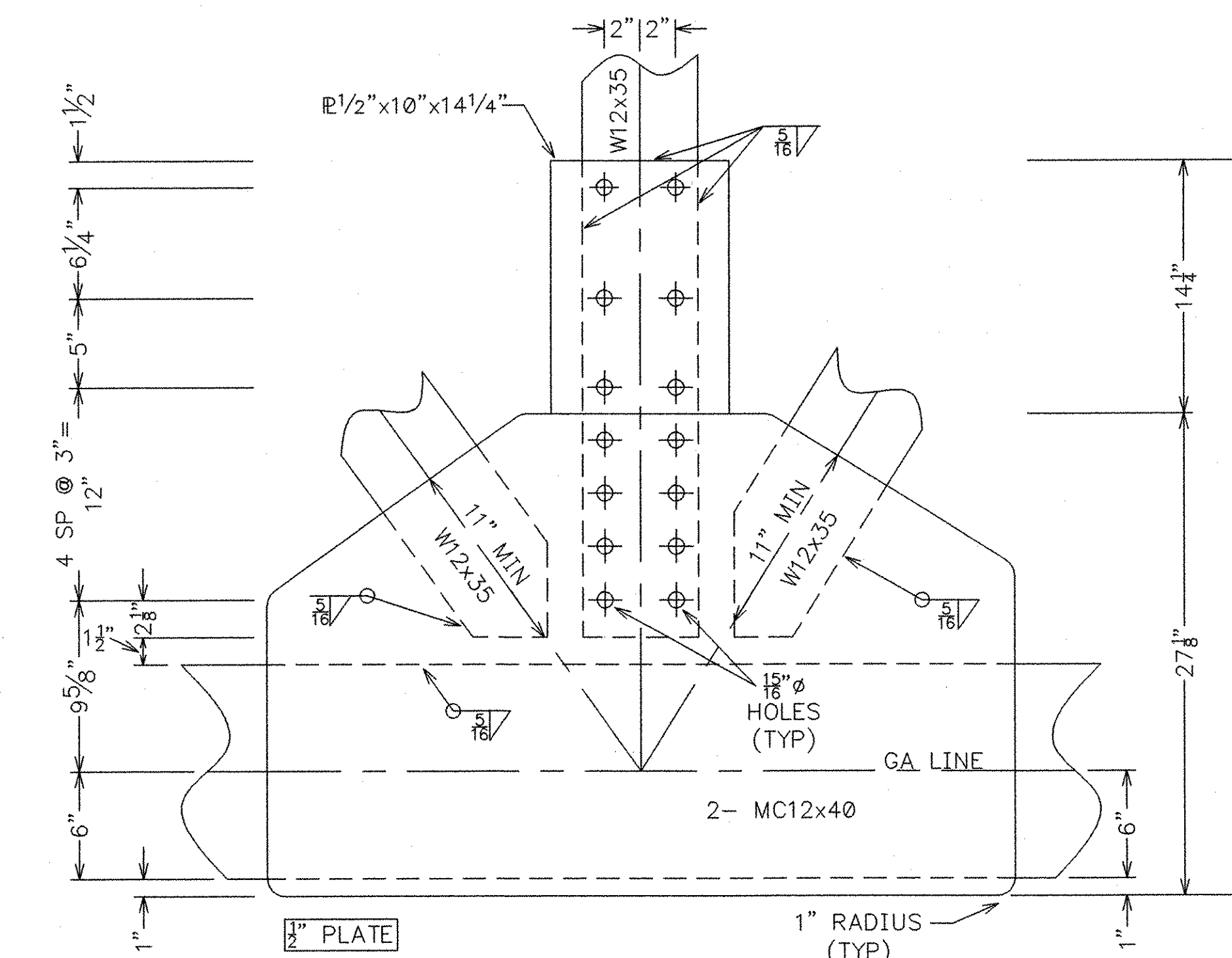
GUSSET PLATE L3 & L15  
6 REQ'D  
(ROAD SIDE TRUSS 2)  
(ROAD SIDE TRUSS 1)  
(OUTSIDE TRUSS 1 NO 1/2"x5"x10")



GUSSET PLATES L5 & L13  
6 REQ'D  
(ROAD SIDE TRUSS 2)  
(ROAD SIDE TRUSS 1)  
(OUTSIDE TRUSS 1 NO 1/2"x8"x10")



GUSSET PLATE L3 & L15  
2 REQ'D  
(SIDEWALK SIDE TRUSS 2)



GUSSET PLATES L5 & L13  
2 REQ'D  
(SIDEWALK SIDE TRUSS 2)

NOTE: 1/4"±1/8" HOLD BACK ON EACH WELD  
ON EACH SIDE FOR CHANGE OF PLANE WELDS.

NOTE: DRAWINGS RELATIVE DO NOT SCALE

RECEIVED  
O.K'D BY JAS  
NOV 13 2004  
SUBMIT APPROVED  
BY DATE 12-14-04

FABRICATOR: U.S. BRIDGE  
CONTACT: 201 WHEELING AVE.  
P.O. BOX 757  
CAMBRIDGE, OHIO 43725  
1-888-872-7434

NO.	DATE	REVISIONS	BY

112'-5" TRUSS BRIDGE  
GRANITE STREET  
CITY OF BARRE  
WASHINGTON COUNTY, VERMONT

21'-0" RDWY + 6' SW  
PROJ. NO. HDP 9281(1)  
BRIDGE # 11

DESIGN SAF	DRAWN JEC	DATE OCTOBER 20, 2004	DRAWING NO. BOTTOM CHORD GUSSET PLATES
CHECK/DATE AG 10/8/04	FABRICATOR U.S. BRIDGE		SHEET 8 OF 11 07755