

DESIGN SPECIFICATIONS
 AASHTO STANDARD SPECIFICATIONS FOR HIGHWAY BRIDGES, 17th EDITION (2002), DIVISION I, WITH ALL ITS LATEST REVISIONS IN EFFECT.

LIVE LOAD
 AASHTO HS25

MATERIAL
 ALL STEEL STRUCTURES SHALL BE ASTM A709, GRADE 50 (ASTM A572 GR50) GALVANIZED AFTER FABRICATION

ALL FASTENERS UNLESS NOTED OTHERWISE, SHALL BE 7/8" Ø HIGH STRENGTH BOLTS, ASTM A325 WITH ASTM A563 GRADE C NUT AND ONE ASTM F436 WASHER PER BOLT. FASTENERS SHALL BE FURNISHED WITH ROTATIONAL CAPACITY TESTS.

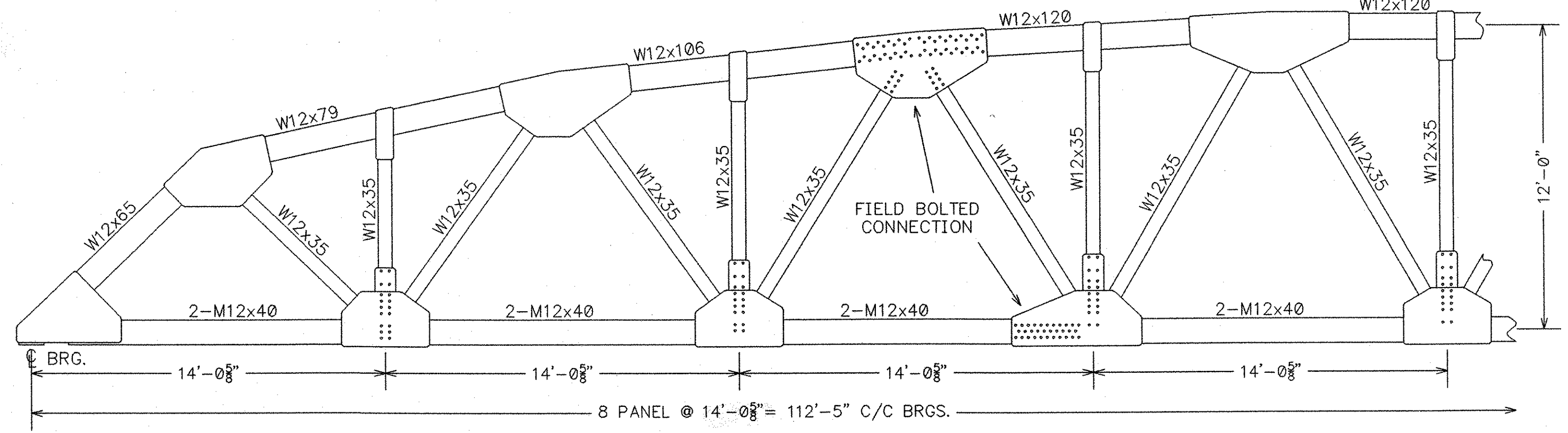
CONSTRUCTION/FABRICATION
 AASHTO STANDARD SPECIFICATIONS FOR HIGHWAY BRIDGES, 16th EDITION (1996), DIVISION II, WITH ALL INTERIM SPECIFICATIONS IN EFFECT

WELDING
 ALL WELDING SHALL BE IN ACCORDANCE WITH AASHTO/AWS D1.5 BRIDGE WELDING CODE AND THE AASHTO FRACTURE CONTROL, WHERE APPLICABLE.

NON-DESTRUCTIVE TESTING OF WELDS SHALL BE PERFORMED AS FOLLOWS:
 FILLET WELDS - VISUAL - 100%
 - MT. - 10% MIN

TRUSS SHOE REACTION

DEAD LOAD	144.6 K
LIVE LOAD (HS 25)	85.9 K
IMPACT	18.1 K
SW DL+LL	67.5 K
TOTAL	316.1 K



WELD MEMBERS TO GUSSET PLATES WITH MINIMUM 5/16 INCH FILLET WELDS AT EACH END OF EACH MEMBER.

ALL GUSSET PLATES 1/2 INCH THICK EXCEPT AS NOTED WITH SUFFICIENT FLAT AREAS TO RESIST STRESSES AND SO SHAPED TO PRODUCE AN AESTHETIC ARCHITECTURAL APPEARANCE.

TRUSS ELEVATION
 TRUSS LIFTING WEIGHT= 35.2K

DESIGN DEAD LOADS

8 1/2" CONCRETE	107 PSF
3" ASPHALT	38 PSF
HAUNCH	15 PSF
DECK FORMS	15 PSF
CONCRETE CURB	235 PLF
SIDEWALK DECK	70 PSF

NOTE: DRAWINGS RELATIVE DO NOT SCALE

NO.	DATE	REVISIONS	BY
1	11/29/04	DIMENSIONS UPDATED	JEC
2	11/29/04	TITLE BLOCK UPDATED	JEC
3	11/29/04	GENERAL NOTES UPDATED	JEC

112'-5" TRUSS BRIDGE
 GRANITE STREET
 CITY OF BARRE
 WASHINGTON COUNTY, VERMONT

21'-0" RDWY + 6' SW
 PROJ. NO. HDP 9281(1)
 BRIDGE # 11

DESIGN SAF
 CHECK/DATE AG 10/8/04

DRAWN JEC
 DATE OCTOBER 20, 2004
 FABRICATOR U.S. BRIDGE

DRAWING NO. GENERAL DETAILS

FABRICATOR: U.S. BRIDGE
 CONTACT: 201 WHEELING AVE.
 P.O. BOX 757
 CAMBRIDGE, OHIO 43725
 1-888-872-7434

RECEIVED
 NOV 13 2004

NO. 1 OF 11
 070 35