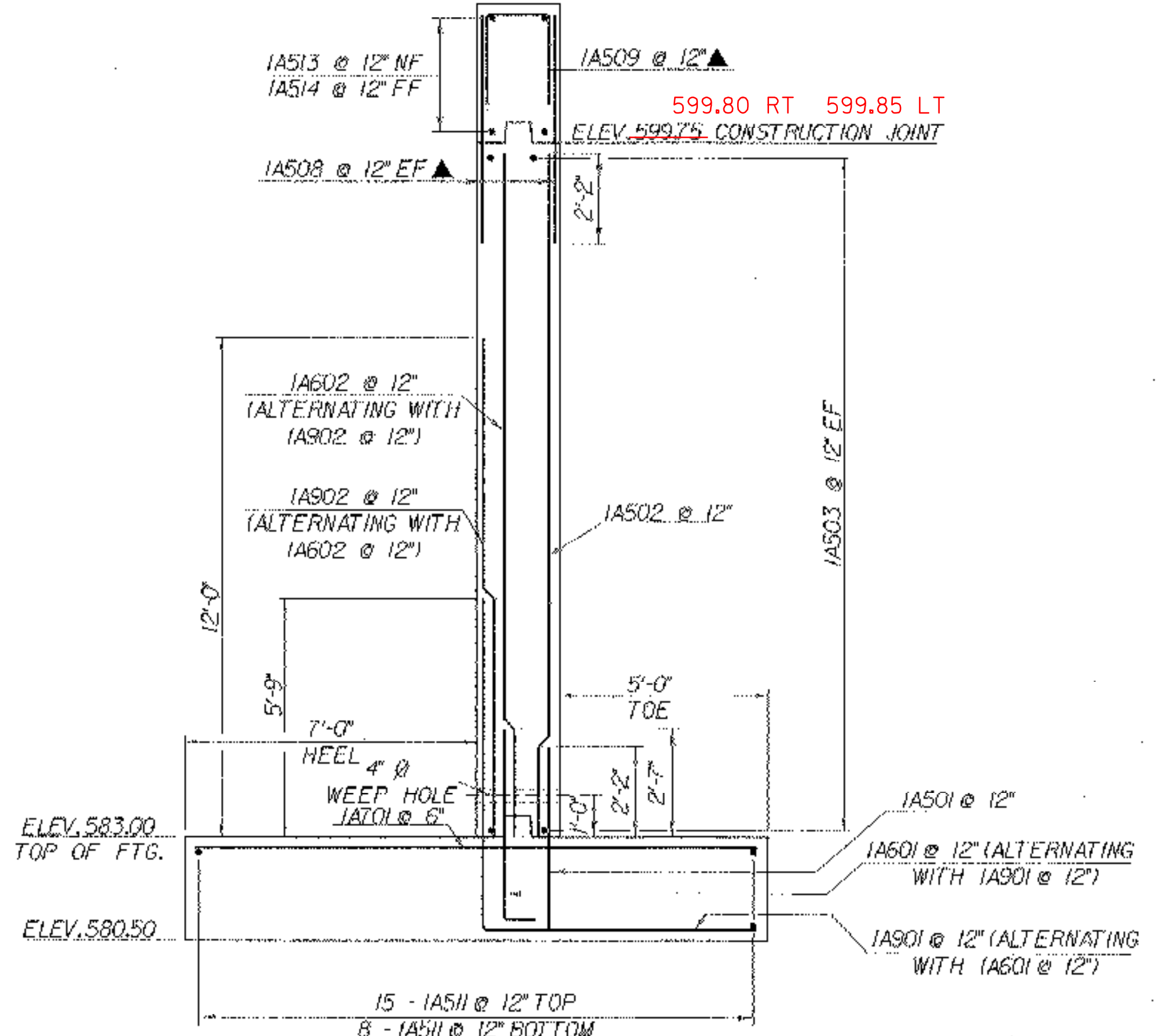
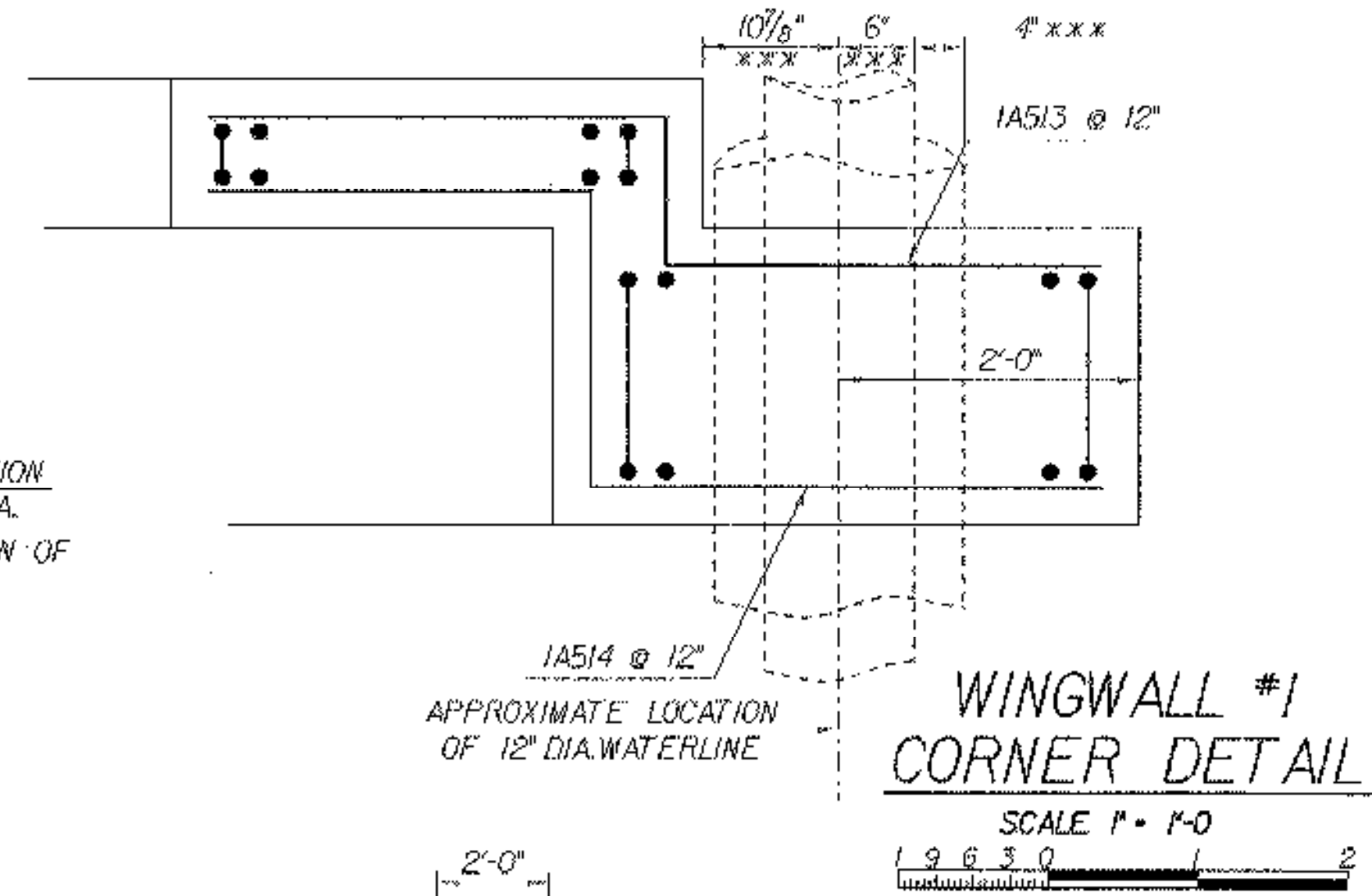


ABUTMENT #1 ELEVATION

SCALE 1/2" = 1'-0"

NOTE: SEE SHEET 44 FOR WINGWALL #2 DETAILS AND CORNER DETAILS

*THIS ELEVATION IS APPROXIMATE. ACTUAL ELEVATION TO BE DETERMINED BY TRUSS FABRICATOR.
 **THIS DIMENSION IS TO BE DETERMINED IN THE FIELD AFTER THE TRUSS IS SET.



WINGWALL #1 TYPICAL

SCALE 3/8" = 1'-0"

NOTE:
 NF - NEAR FACE
 FF - FAR FACE
 EF - EACH FACE
 ▲ - CUT TO FIT IN FIELD
 3" CLR. UNLESS OTHERWISE SPECIFIED ON THE PLANS.

ABUTMENT 1 DETAILS

PROJECT NAME:	BARRE CITY	PLOT DATE:	16-JUN-2004
PROJECT NUMBER:	HDP 9281(1)	DRAWN BY:	K. RUTTER
FILE NAME:	str5/92j099/sj099sub.dgn	CHECKED BY:	T.A. SUMNER
PROJECT LEADER:	C. KELLER	SHEET	42 OF 58
DESIGNED BY:	K. RUTTER		