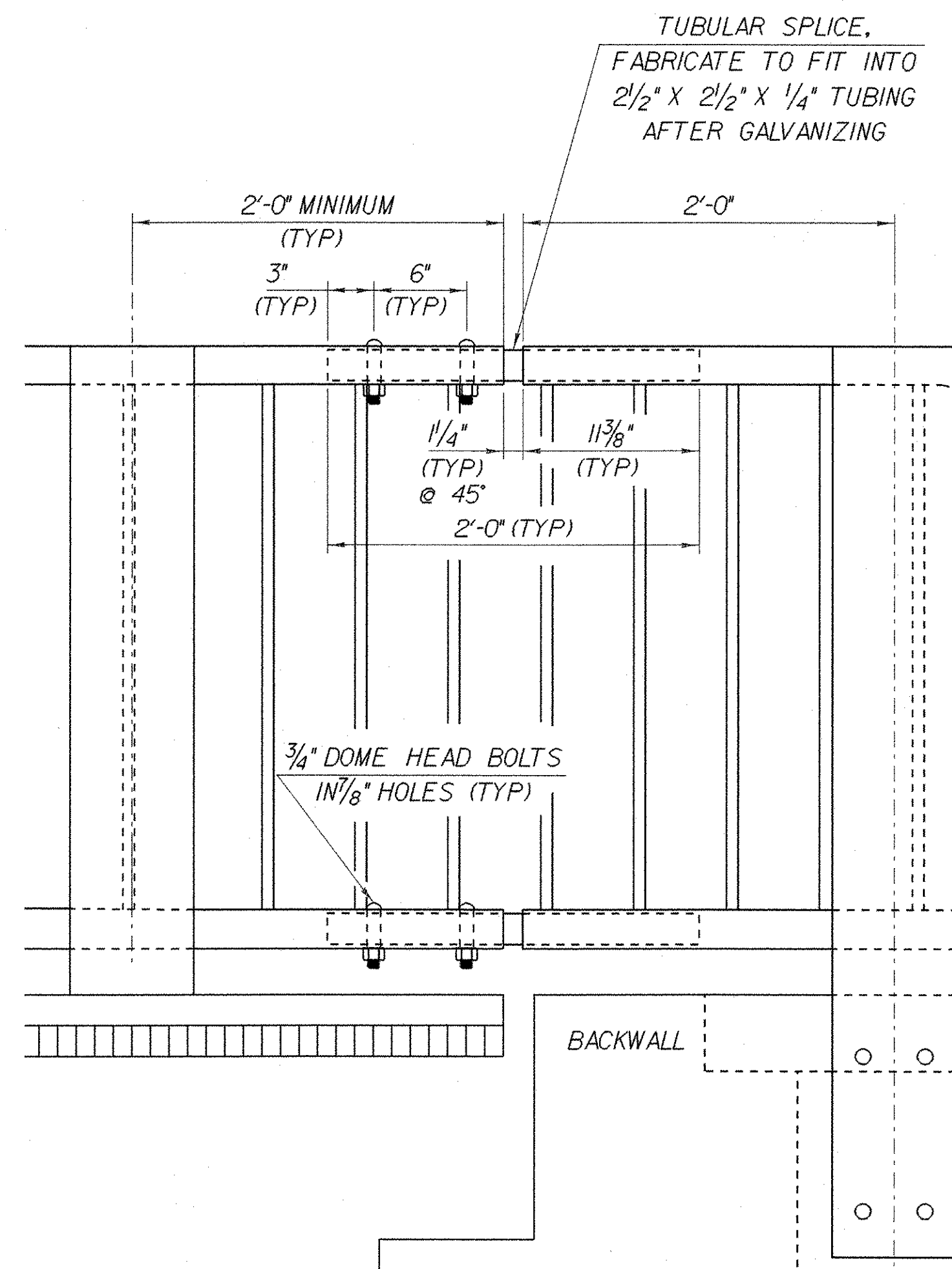


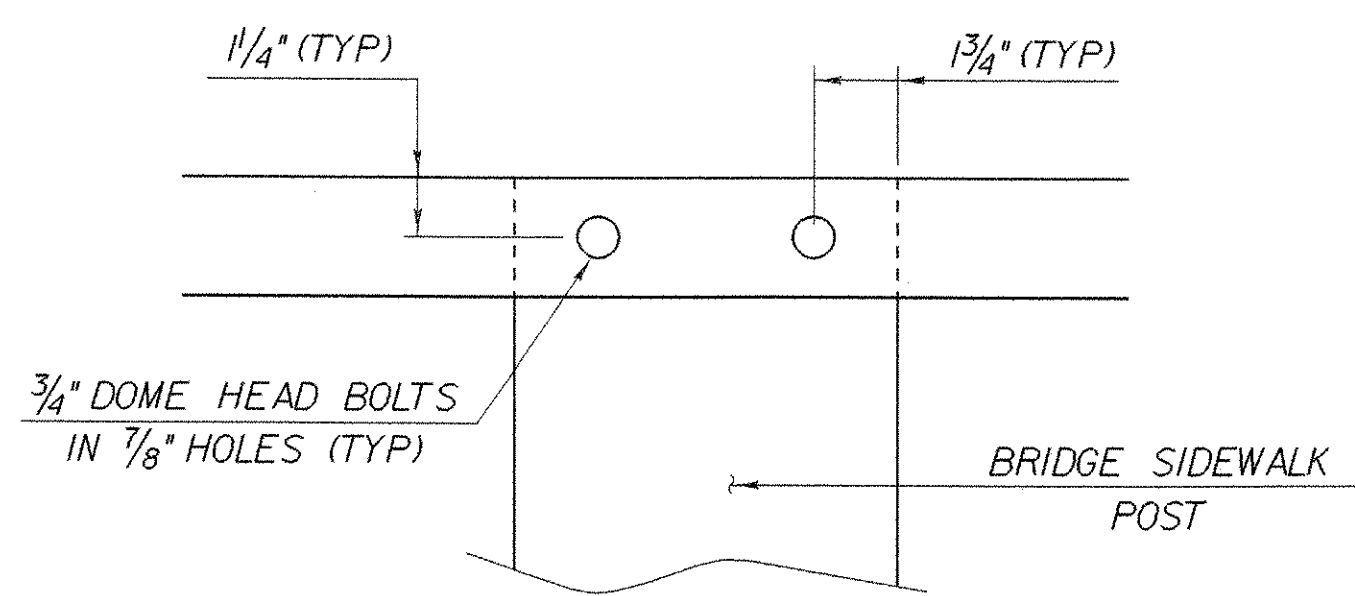
ELEVATION PEDESTRIAN RAILING

HORIZONTAL SCALE: $\frac{3}{8}$ " = 1'-0"
 VERTICAL SCALE: 1" = 1'-0"



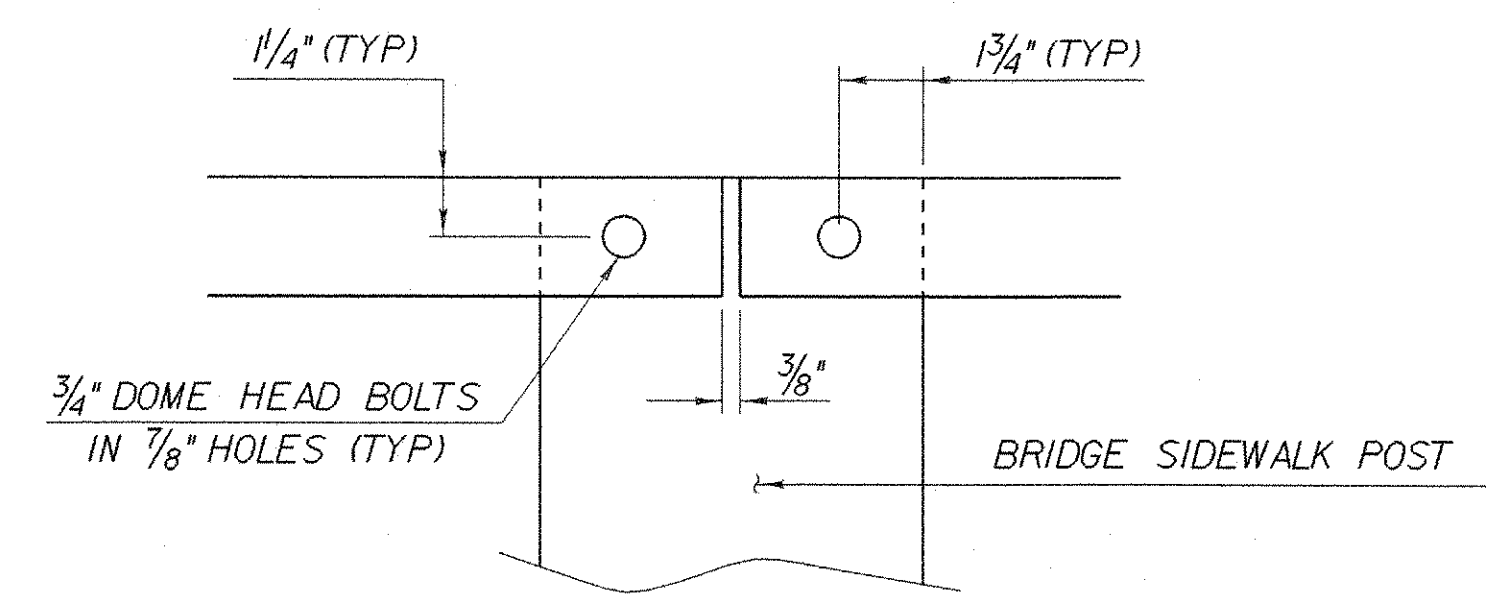
PEDESTRIAN RAILING EXPANSION JOINT AT ABUTMENT #2

SCALE $1\frac{1}{2}$ " = 1'-0"
 1 9 6 3 0 1



BOLTING DETAIL "A"

SCALE 3" = 1'-0"
 1 9 6 3 0 1



BOLTING DETAIL "B"

SCALE 3" = 1'-0"
 1 9 6 3 0 1

* BRIDGE PEDESTRIAN RAIL POST SPACING, PANEL LENGTH AND NUMBER OF POSTS PER PANEL IS TO BE DETERMINED BY THE TRUSS FABRICATOR.

PEDESTRIAN RAIL DETAILS

PROJECT NAME: BARRE CITY	PLOT DATE: 16-JUN-2004
PROJECT NUMBER: HDP 9281(I)	DRAWN BY: K. RUTTER
FILE NAME: str5/92j099/sj099pedrail.d	CHECKED BY: T.A. SUMNER
PROJECT LEADER: C. KELLER	SHEET 29 OF 58
DESIGNED BY: K. RUTTER	
sj099pedrail.i	