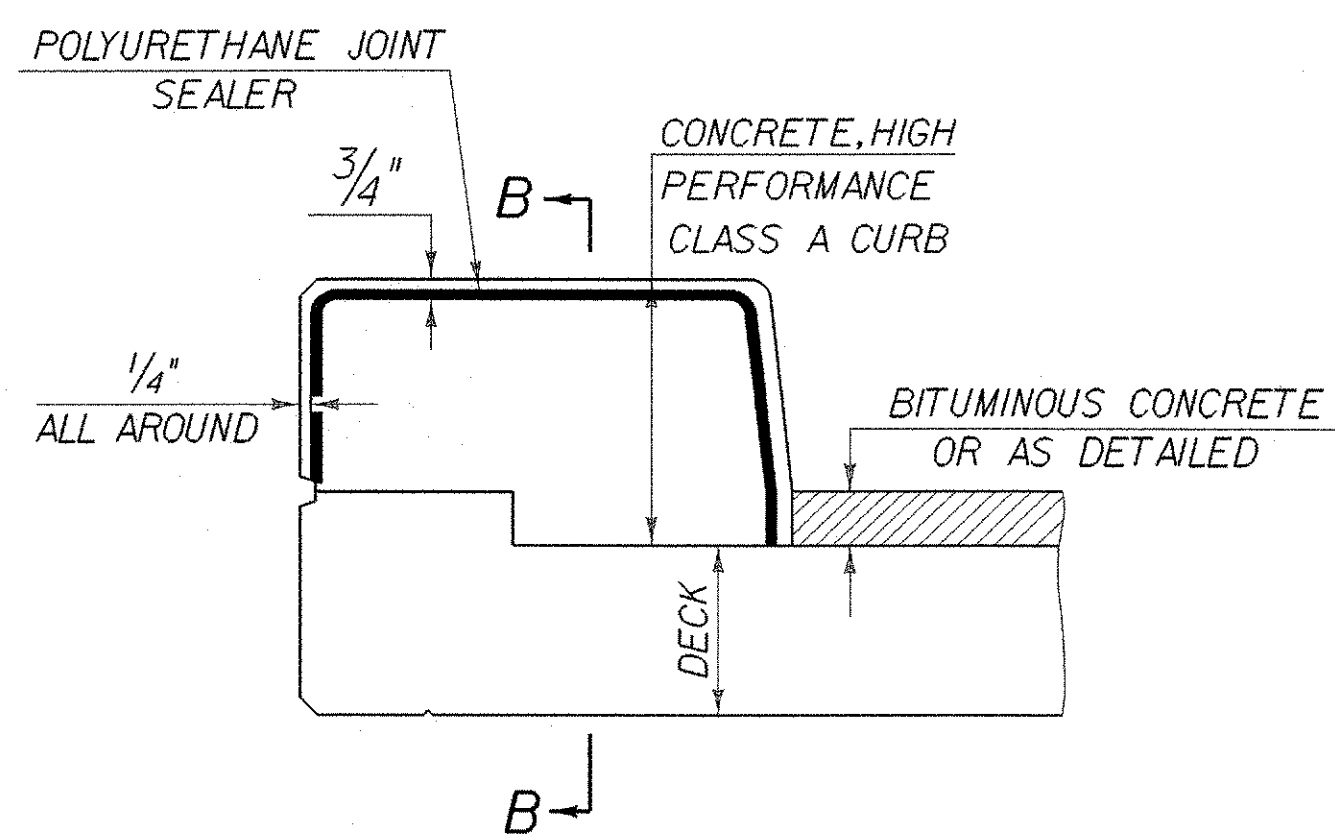


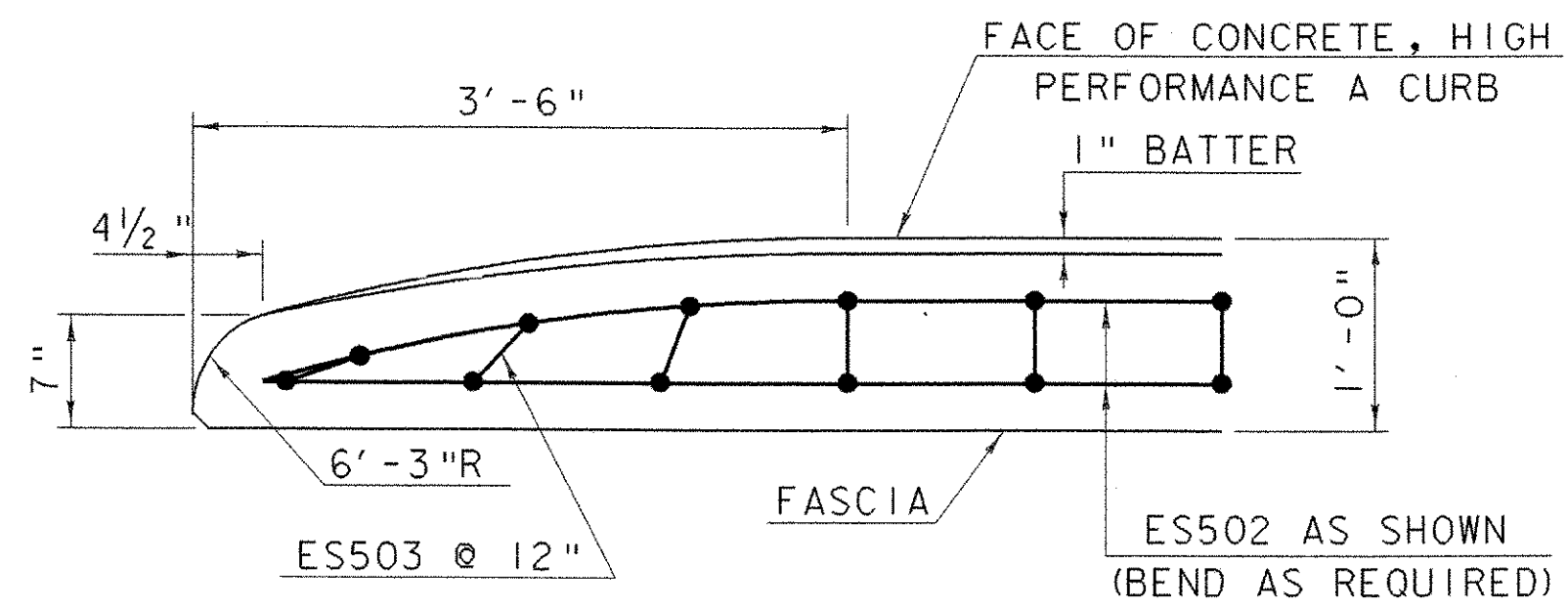
NOTE: \odot BOLT HOLES SHALL BE DRILLED IN TRUSS MEMBERS AT THE SPACING SHOWN

* THIS DIMENSION IS BASED ON A TRUSS MEMBER WIDTH OF 12". ACTUAL DIMENSION MAY VARY DUE TO TRUSS FABRICATOR USING A DIFFERENT MEMBER WIDTH.



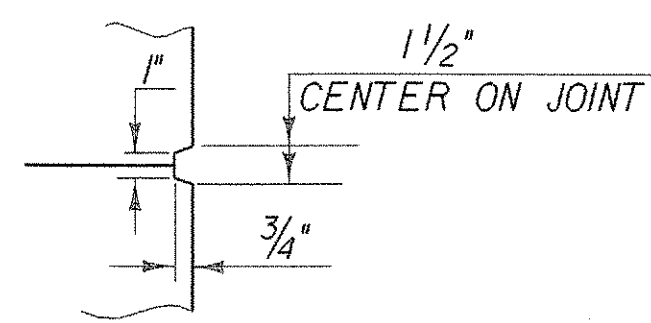
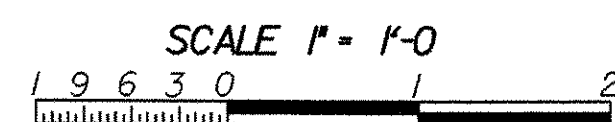
TYPICAL SECTION THROUGH CONCRETE CURB CONSTRUCTION JOINT (FOR DOWNSTREAM CURB ONLY)

- NOTES:
1. CONSTRUCTION JOINTS THROUGH CONCRETE CURBS SHALL BE SPACED MAXIMUM 5'-0" CENTER TO CENTER AND SHALL BE 1'-6" MINIMUM FROM THE CENTER OF THE NEAREST BRIDGE RAIL POST. CONCRETE SHALL BE PLACED IN ALTERNATING SECTIONS WITH A MINIMUM OF 48 HOURS DELAY BETWEEN ADJACENT POURS.
 2. LONGITUDINAL REINFORCING SHALL PASS THROUGH CONCRETE CURB CONSTRUCTION JOINTS.

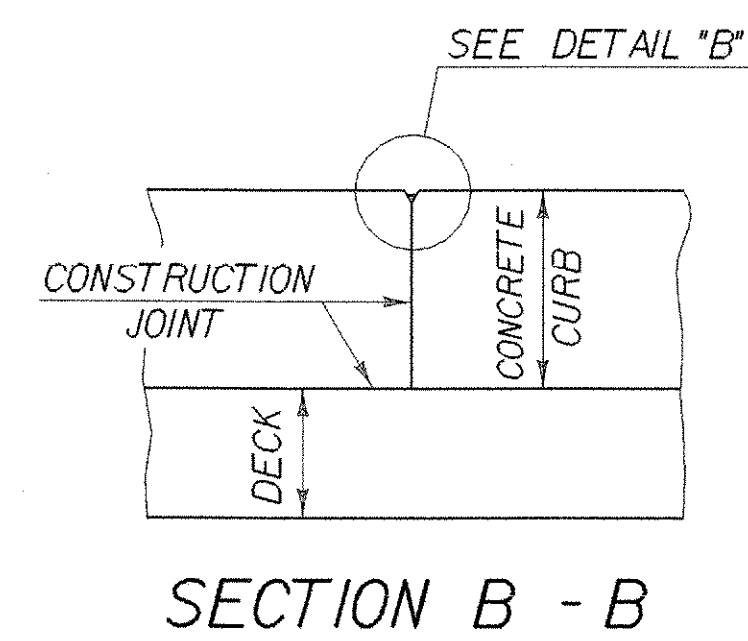


FLARED END DETAIL FOR 1'-0" CURB NEAR WW#1 AND WW#3

CURB REINFORCING STIRRUP BARS SHALL BE TURNED AS REQUIRED TO FIT FLARED ENDS.

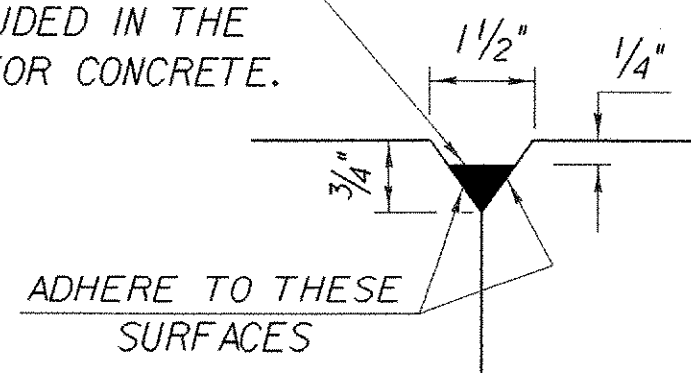


SCORE MARK DETAIL

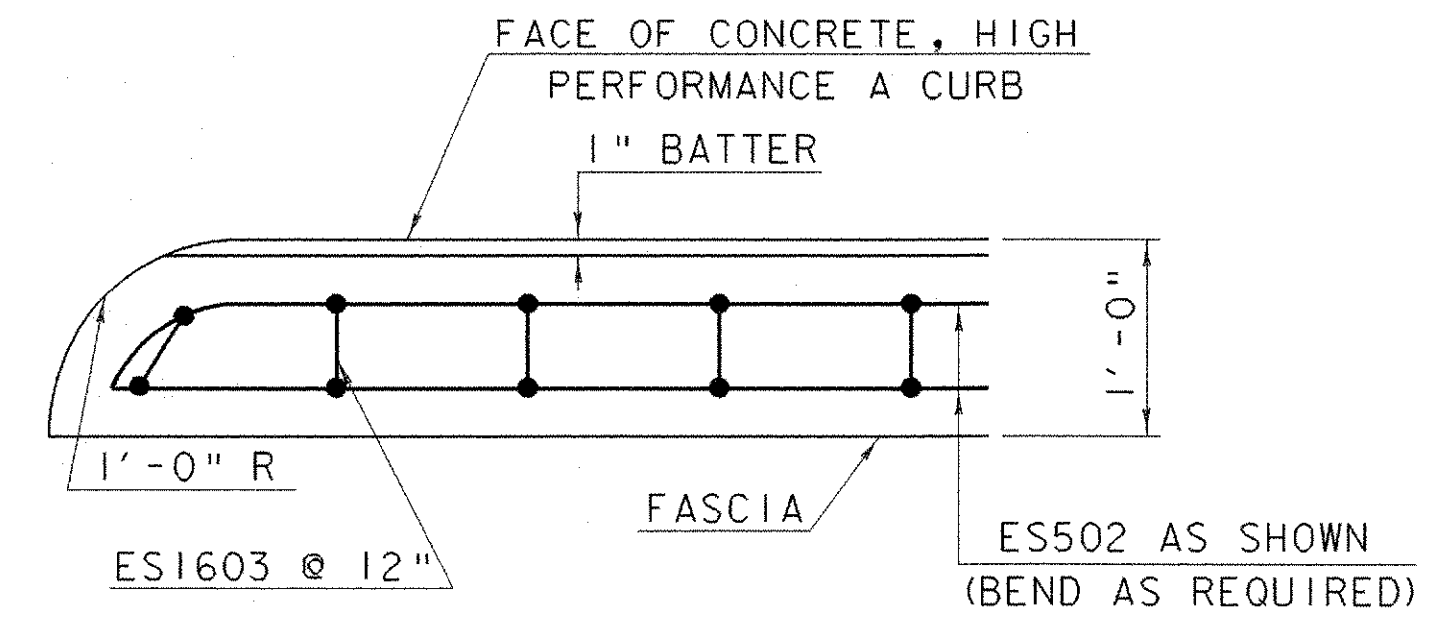


SECTION B - B

POLYURETHANE JOINT SEALER PER SUBSECTION 524.06C. COLOR TO MATCH CONCRETE. COST TO BE INCLUDED IN THE UNIT PRICE BID FOR CONCRETE.

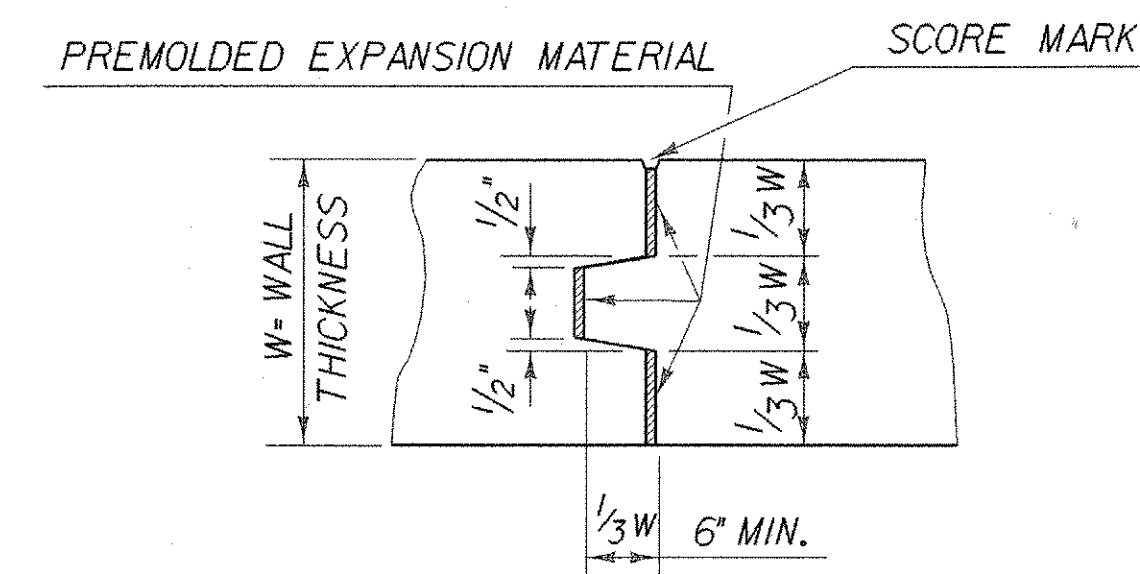
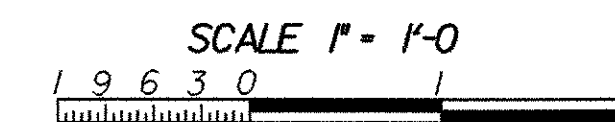


DETAIL "B"

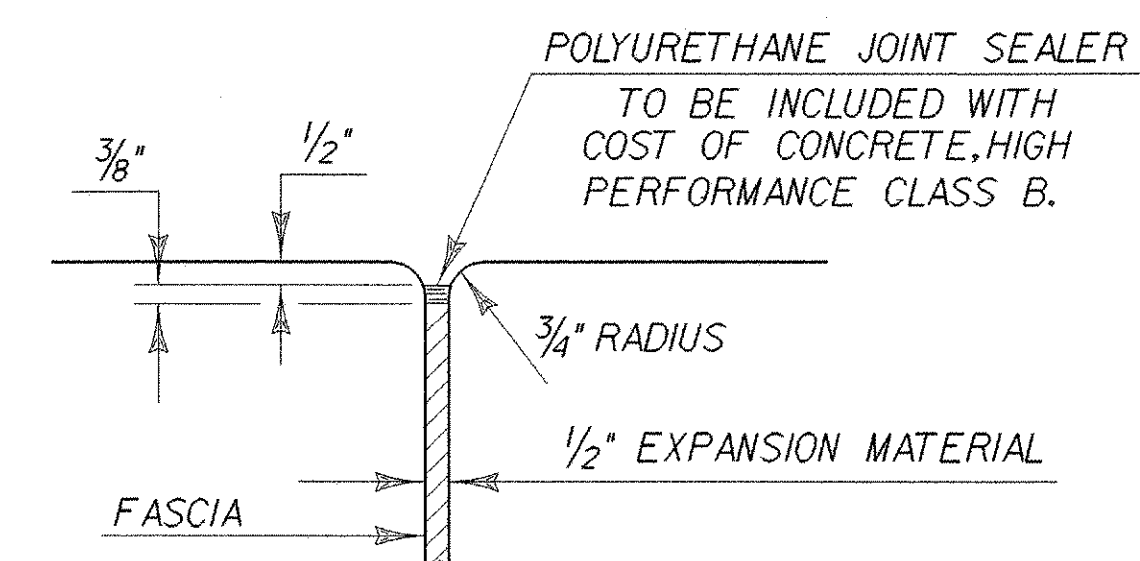


FLARED END DETAIL FOR 1'-0" CURB NEAR WW#4

CURB REINFORCING STIRRUP BARS SHALL BE TURNED AS REQUIRED TO FIT FLARED ENDS.



TYPICAL CONCRETE EXPANSION JOINT



JOINT BETWEEN FASCIA AND WINGWALL

BRIDGE CURB DETAILS

PROJECT NAME:	BARRE CITY	PLOT DATE:	16-JUN-2004
PROJECT NUMBER:	HDP 9281(I)	DRAWN BY:	K. RUTTER
FILE NAME:	/str5/92j099/sj099sup.dgn	CHECKED BY:	T.A. SUMNER
PROJECT LEADER:	C. KELLER	SHEET	24 OF 58
DESIGNED BY:	K. RUTTER		
	sj099supdet.i		