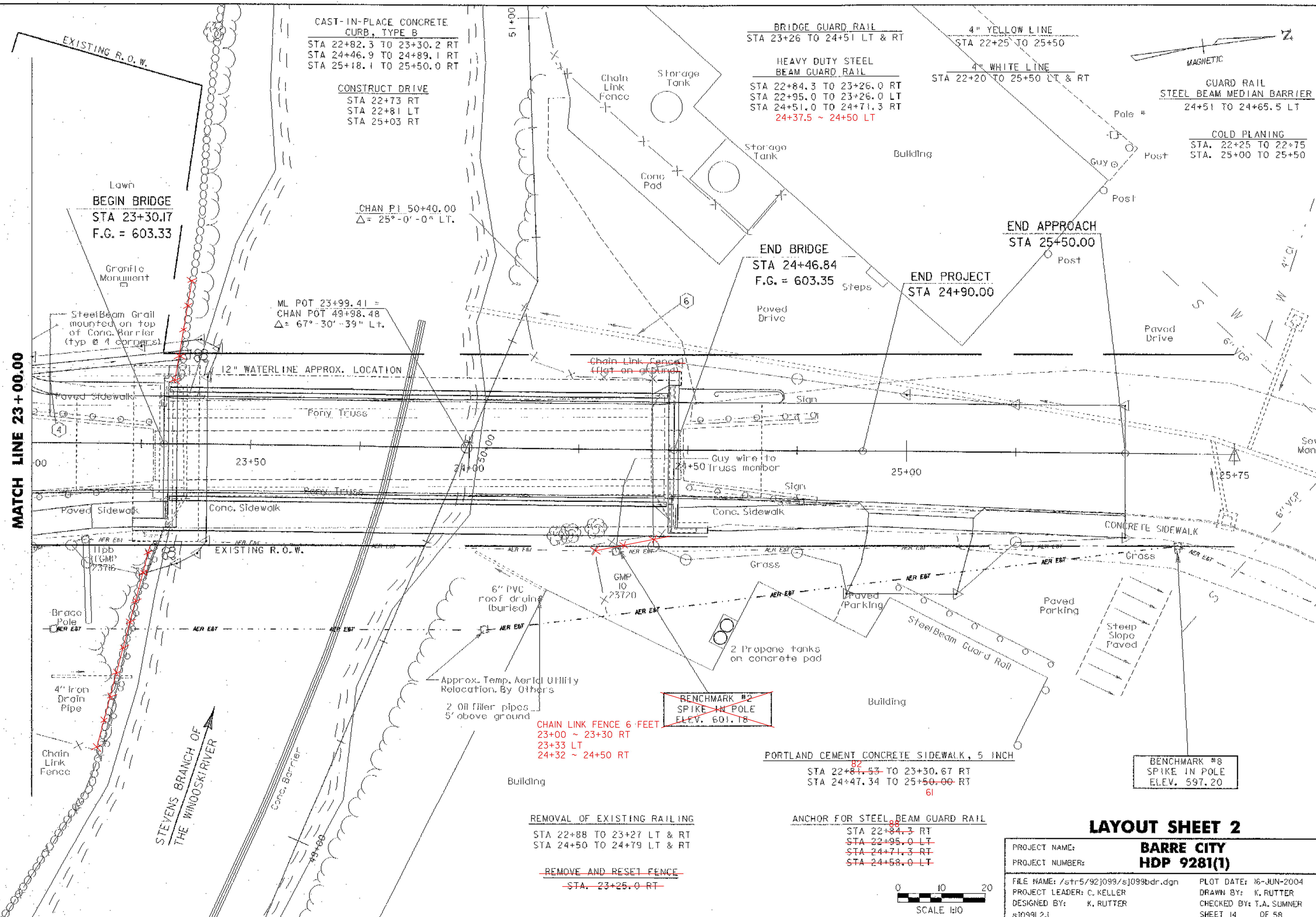


MATCH LINE 23+00.00



CAST-IN-PLACE CONCRETE CURB, TYPE B  
STA 22+82.3 TO 23+30.2 RT  
STA 24+46.9 TO 24+89.1 RT  
STA 25+18.1 TO 25+50.0 RT

CONSTRUCT DRIVE  
STA 22+73 RT  
STA 22+81 LT  
STA 25+03 RT

CHAN P.I. 50+40.00  
 $\Delta = 25^\circ - 0' - 0''$  LT.

ML POT 23+99.41 =  
CHAN POT 49+98.48  
 $\Delta = 67^\circ - 30' - 39''$  Lt.

BRIDGE GUARD RAIL  
STA 23+26 TO 24+51 LT & RT

HEAVY DUTY STEEL BEAM GUARD RAIL  
STA 22+84.3 TO 23+26.0 RT  
STA 22+95.0 TO 23+26.0 LT  
STA 24+51.0 TO 24+71.3 RT  
24+37.5 ~ 24+50 LT

4" YELLOW LINE  
STA 22+25 TO 25+50

4" WHITE LINE  
STA 22+20 TO 25+50 LT & RT

GUARD RAIL STEEL BEAM MEDIAN BARRIER  
24+51 TO 24+65.5 LT

COLD PLANING  
STA. 22+25 TO 22+75  
STA. 25+00 TO 25+50

END BRIDGE  
STA 24+46.84  
F.G. = 603.35

END APPROACH  
STA 25+50.00

END PROJECT  
STA 24+90.00

~~BENCHMARK #2  
SPIKE IN POLE  
ELEV. 601.18~~

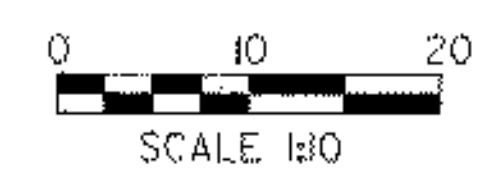
BENCHMARK #8  
SPIKE IN POLE  
ELEV. 597.20

REMOVAL OF EXISTING RAILING  
STA 22+88 TO 23+27 LT & RT  
STA 24+50 TO 24+79 LT & RT

~~REMOVE AND RESET FENCE  
-STA. 23+25.0 RT-~~

ANCHOR FOR STEEL BEAM GUARD RAIL  
STA 22+84.3 RT  
STA 22+95.0 LT  
STA 24+71.3 RT  
STA 24+58.0 LT

PORTLAND CEMENT CONCRETE SIDEWALK, 5 INCH  
STA 22+81.53 TO 23+30.67 RT  
STA 24+47.34 TO 25+50.00 RT  
61



### LAYOUT SHEET 2

**BARRE CITY  
HDP 9281(1)**

PROJECT NAME:	<b>BARRE CITY HDP 9281(1)</b>
PROJECT NUMBER:	
FILE NAME: /str5/92j099/sj099bdr.dgn	PLOT DATE: 16-JUN-2004
PROJECT LEADER: C. KELLER	DRAWN BY: K. RUTTER
DESIGNED BY: K. RUTTER	CHECKED BY: T.A. SUMNER
sj099L2.i	SHEET 14 OF 58