

GPS CONTROL POINTS

HVCTRL

STANDARD DISK STAMPED
Skyline

N = 622276.13
E = 1635312.54
ELEV. = 0.00

DESCRIBED BY VERMONT AGENCY OF TRANSPORTATION 1993
GENERAL LOCATION - BARRE CITY OWNERSHIP - CITY OF BARRE R.O.W.
TO REACH FROM THE INTERSECTION OF U.S ROUTE 302 AND THE INTERSTATE
ACCESS ROAD (VERMONT ROUTE 62) IN BARRE, GO NORTHWEST ALONG VERMONT
ROUTE 62 FOR 0.3 MI (0.5 KM) TO A TRAFFIC SIGNAL LIGHT AT A FOUR WAY
INTERSECTION. TURN LEFT AND GO SOUTHWEST ALONG BERLIN STREET FOR
ABOUT 40 M (131.2 FT) TO ITS INTERSECTION WITH RAILROAD STREET. TURN
RIGHT AND GO NORTHWEST ALONG RAILROAD STREET FOR 0.35 MI (0.56 KM) TO
THE MARK ON THE RIGHT SET IN THE TOP OF A MASSIVE LEDGE OUTCROP.
THE STATION IS LOCATED 34.8 FT (10.6 M) NORTHEAST OF AND ABOUT 2.5 FT
(0.8 M) HIGHER THAN THE CENTERLINE OF RAILROAD STREET, 44 FT
(13.4 M) SOUTHEAST OF POLE NUMBER 18A, 62.2 FT (19.0 M) EAST
NORTHEAST OF POLE NUMBER 18, 14.2 FT (4.3 M) SOUTH SOUTHWEST OF THE
HIGH POINT OF A STATE OF VERMONT RIGHT OF WAY FENCE, 6.5 FT (2.0 M)
NORTHEAST OF A FIBERGLASS WITNESS POST.

- TO ALLOW THE STATE PLANE COORDINATES TO FIT THE AGENCY DESIGN PLANE, SUBTRACT 600,000 FROM THE NORTING AND SUBTRACT 1,600,000 FROM THE EASTING
- DESCRIPTION PROVIDED BY VERMONT AGENCY OF TRANSPORTATION GEODETIC SURVEY UNIT

The control for this project
came from a previous
Barre City job (TH2-9523
95j302). Points 1 & 2 of this
job are equal to points 4 &
3 on the prior job.

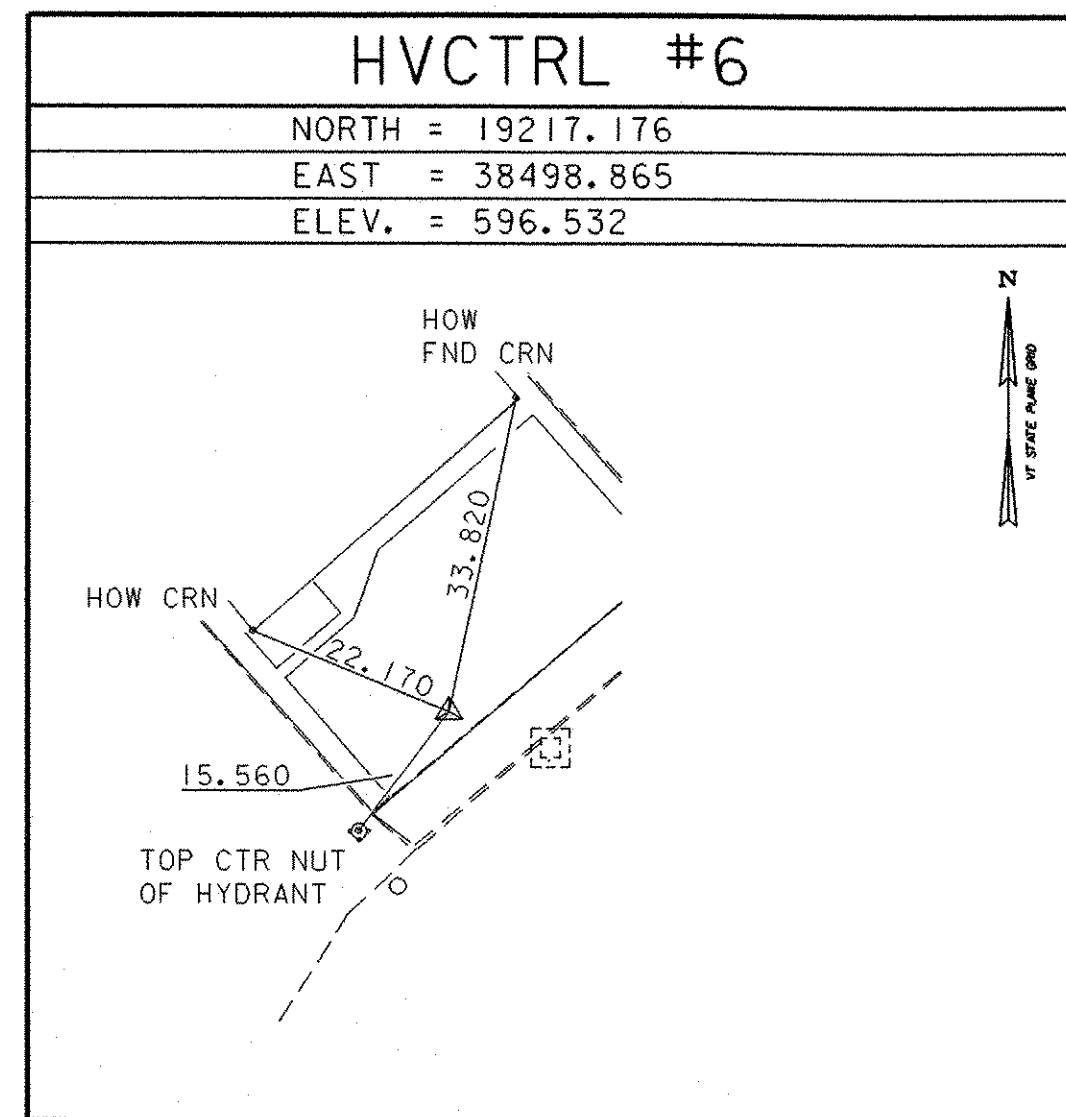
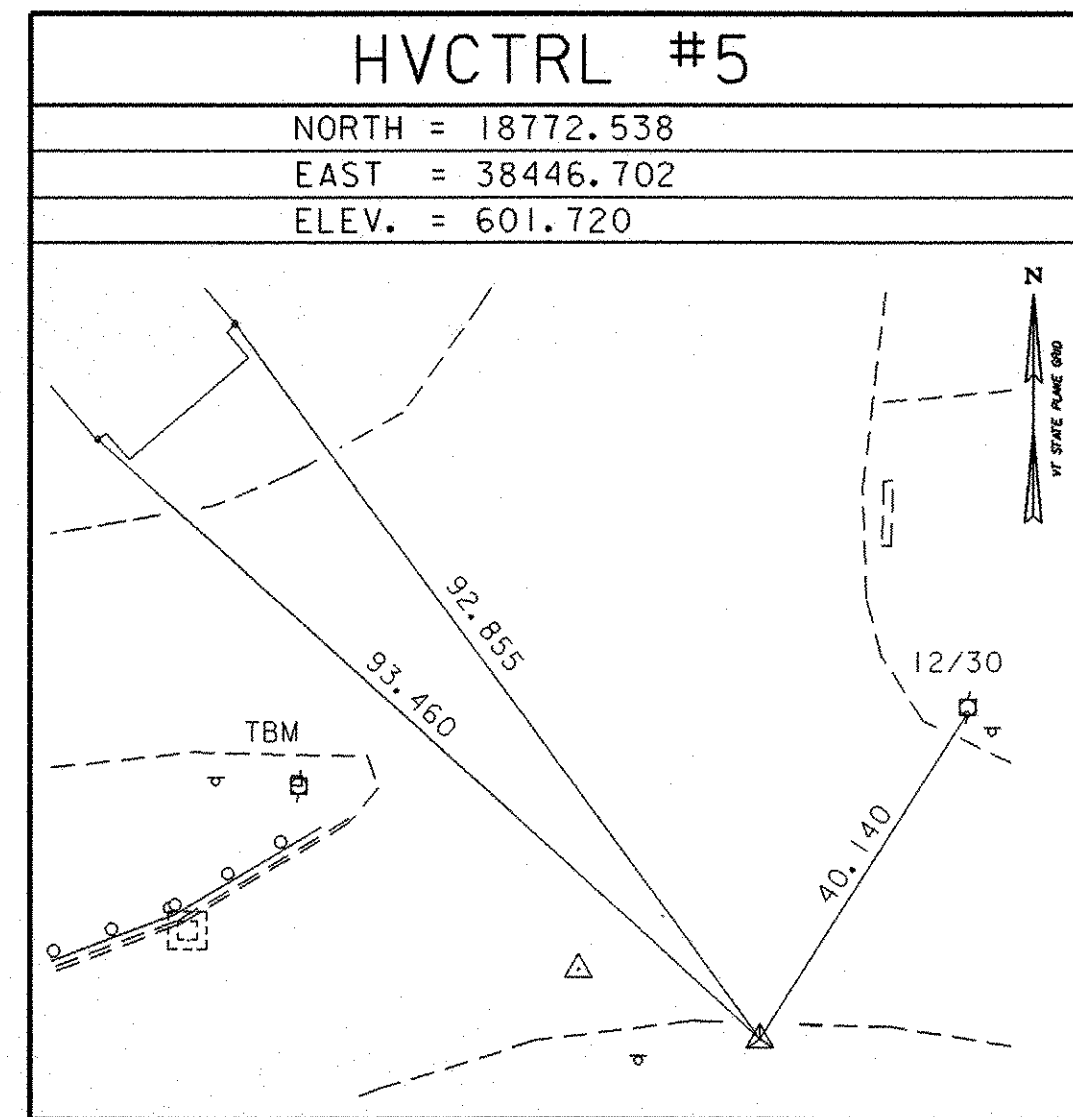
HVCTRL

STANDARD DISK STAMPED
Provencher

N = 625935.89
E = 1634048.31
ELEV. = 0.00

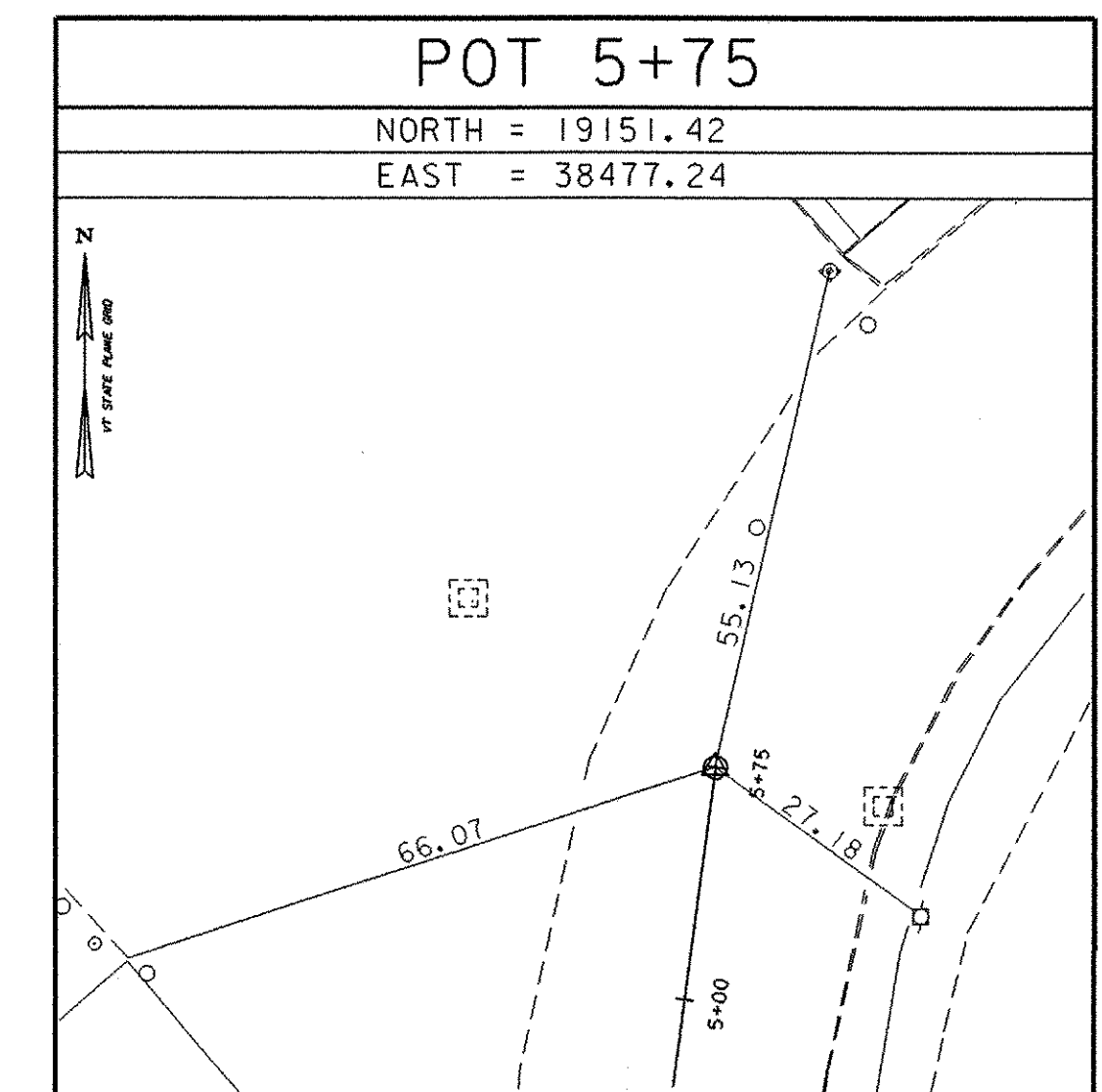
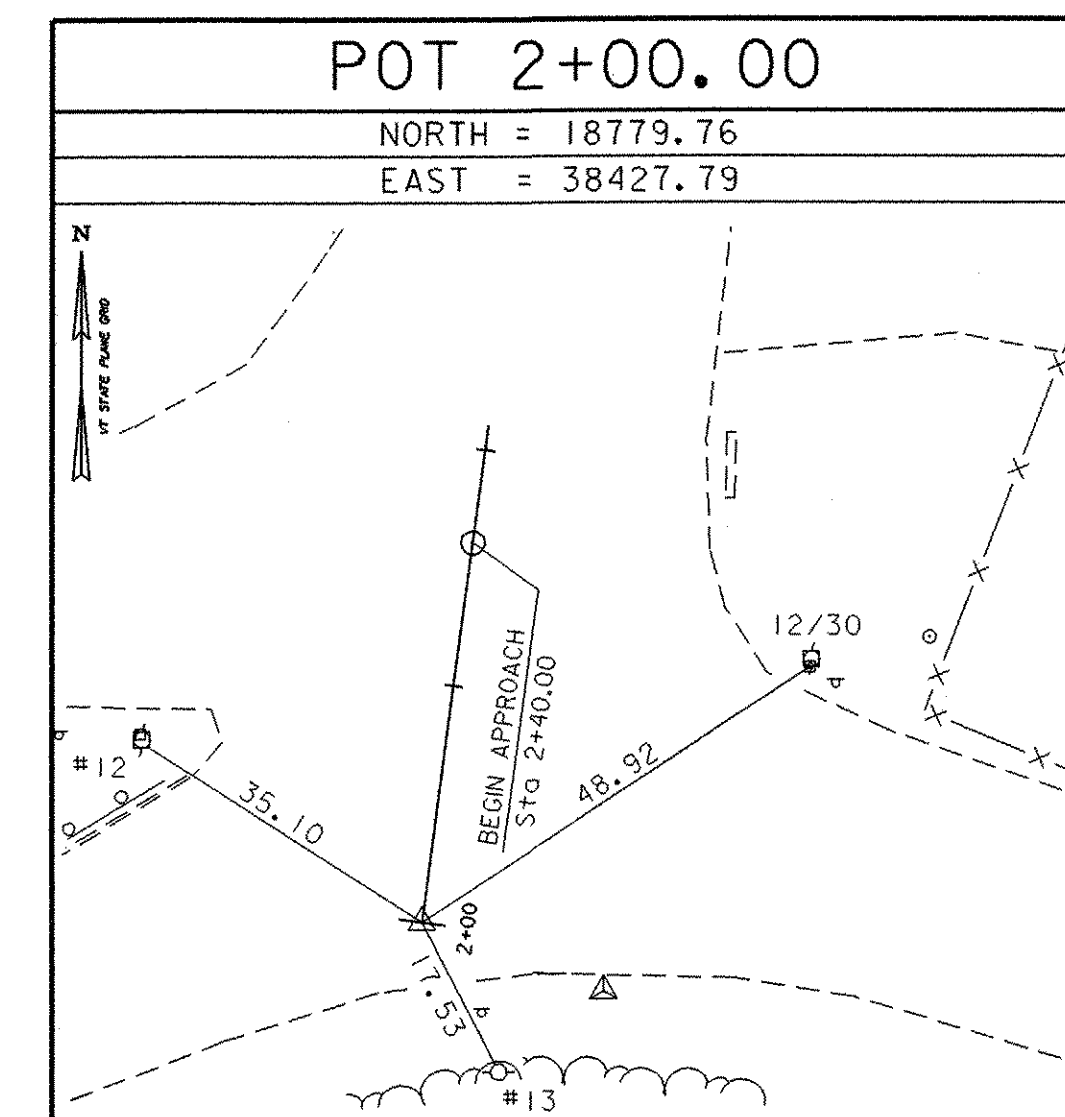
DESCRIBED BY VERMONT AGENCY OF TRANSPORTATION 1996 (DJM)
GENERAL LOCATION - RICHARDSON RD, BARRE OWNERSHIP - PHILLIP
PROVENCHER TO REACH FROM THE INTERSECTION OF U.S. RTE 302 AND
RICHARDSON RD GO 0.5 MI (0.8 KM) NORTHEAST AND NORTHWEST ALONG
RICHARDSON RD TO A PRIVATE PAVED DRIVE LEFT. TURN LEFT AND GO
NORTHWEST ALONG PRIVATE DRIVE FOR 0.1 MI (0.2 KM) TO A TAN AND WHITE
1 1/2 STORY HOUSE AND END OF CAR TRAVEL. PACK 300 FT (91.4 M) SOUTHWEST
THROUGH AN OLD HAY FIELD TO A POINT APPROX 30 FT (9.1 M) SOUTHWEST OF
ITS HIGH POINT TO THE STATION. THE STATION IS 195.5 FT (59.6 M) WEST
SOUTHWEST OF THE SOUTHWEST CORNER OF A 1 STORY SHED, 110.5 FT (33.7 M)
SOUTHWEST OF THE EAST END OF AN EAST-WEST STONE WALL AT A 24 INCH
MAPLE, 149 FT (45.4 M) SOUTHWEST OF THE WEST END OF AN OLD STONE
FOUNDATION, AND 2 FT (0.6 M) SOUTH OF A FIBERGLASS WITNESS POST.

TRAVERSE TIES



OLD ALIGNMENT TIES ARE
FOR RIGHT OF WAY
USE ONLY

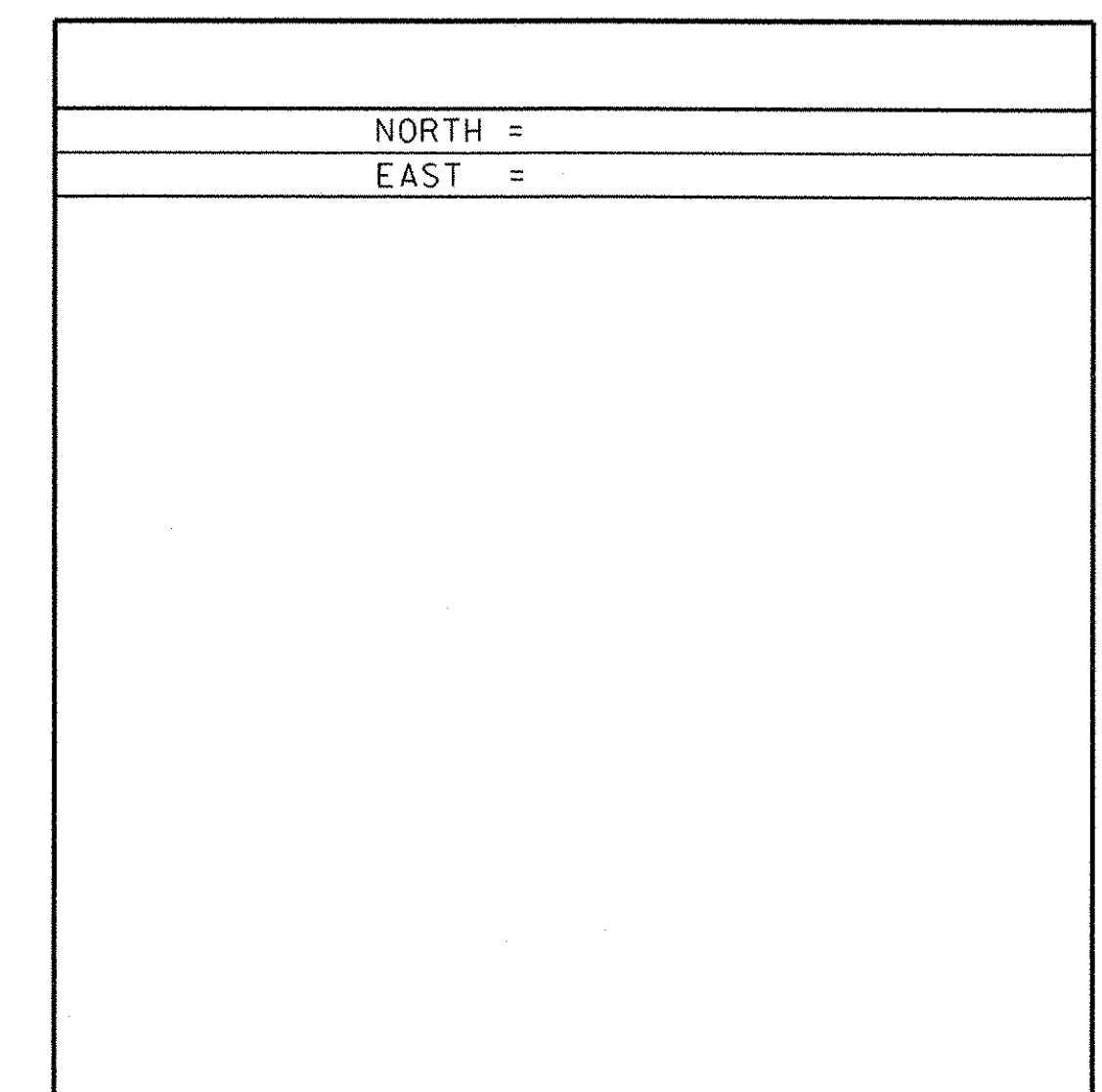
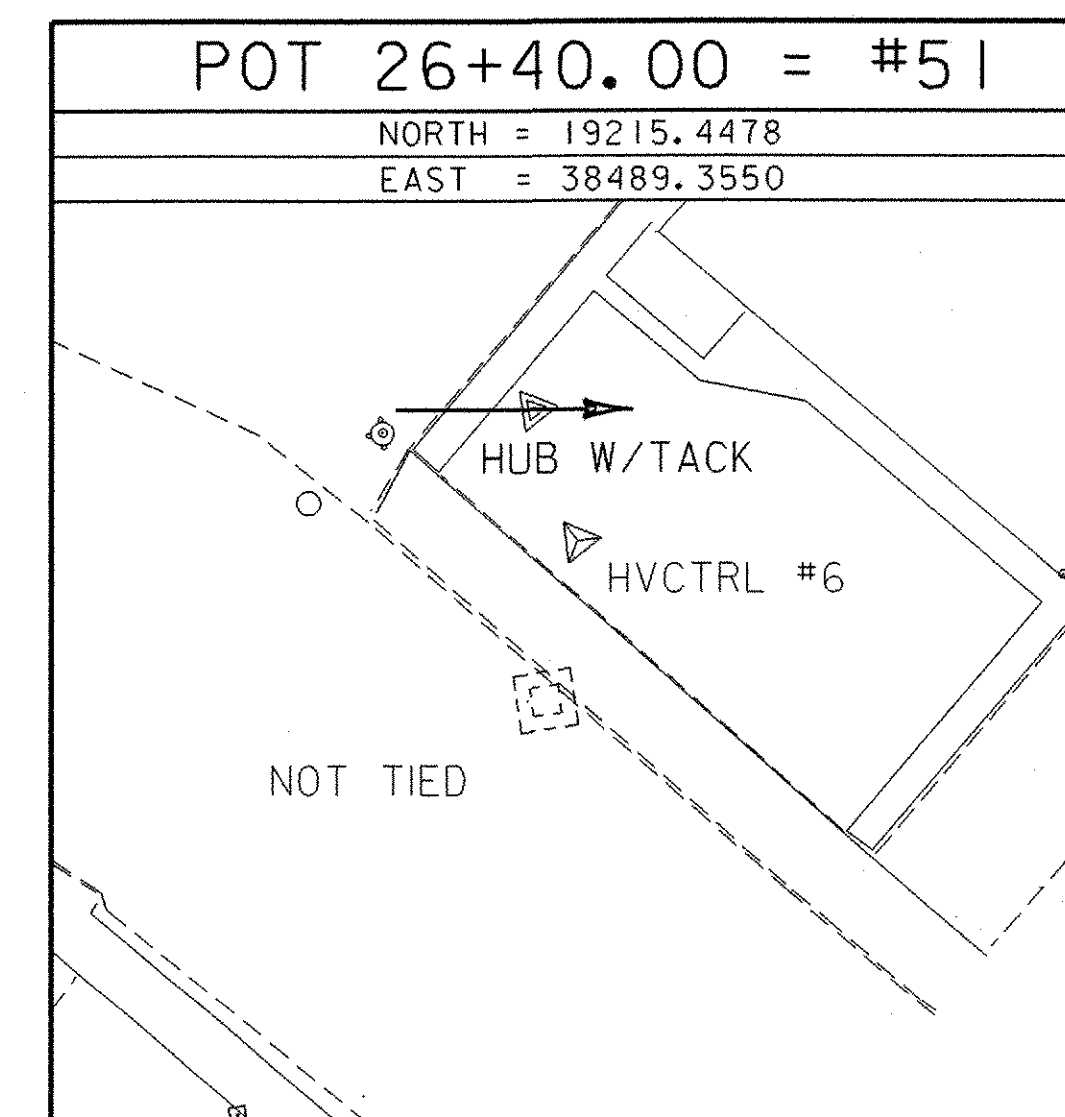
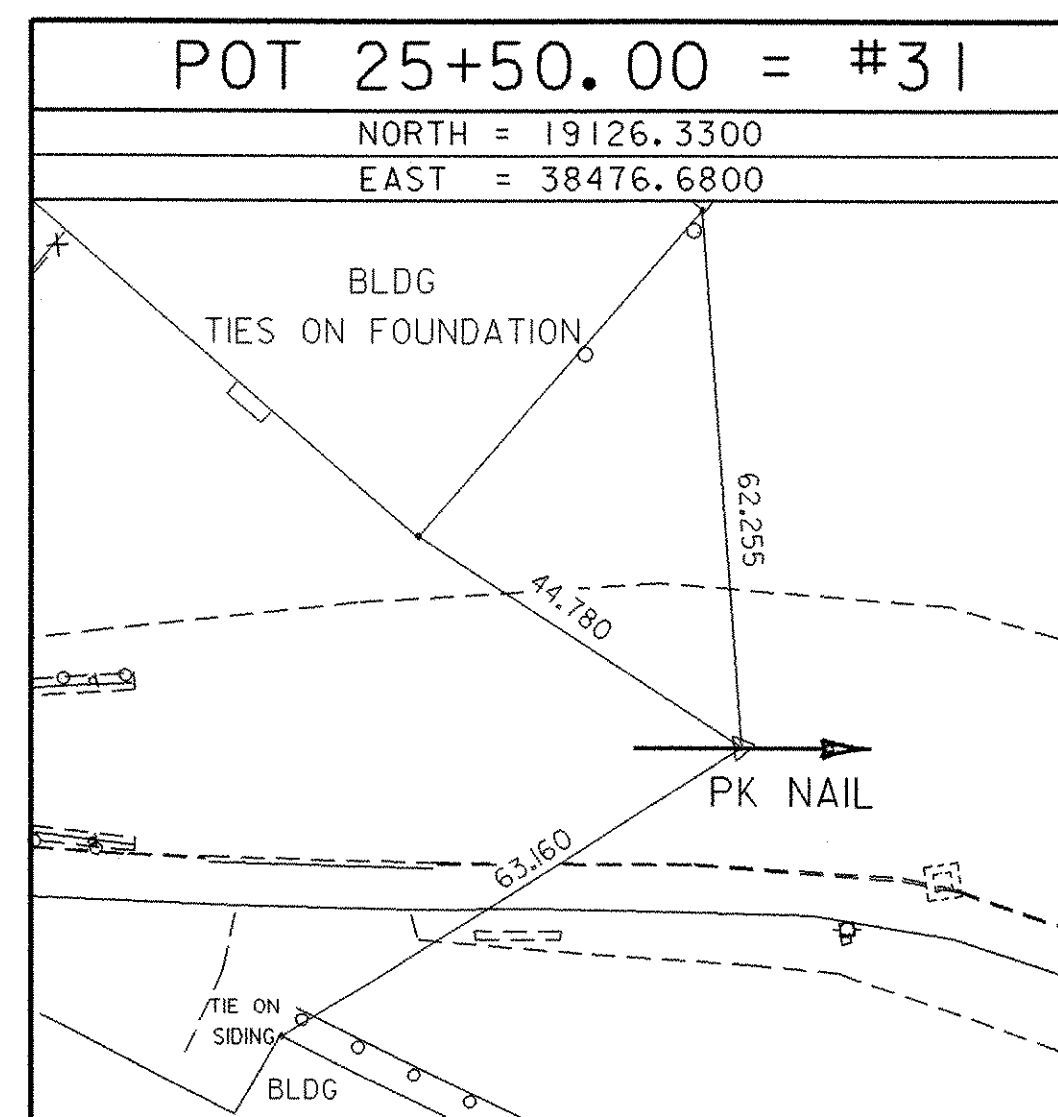
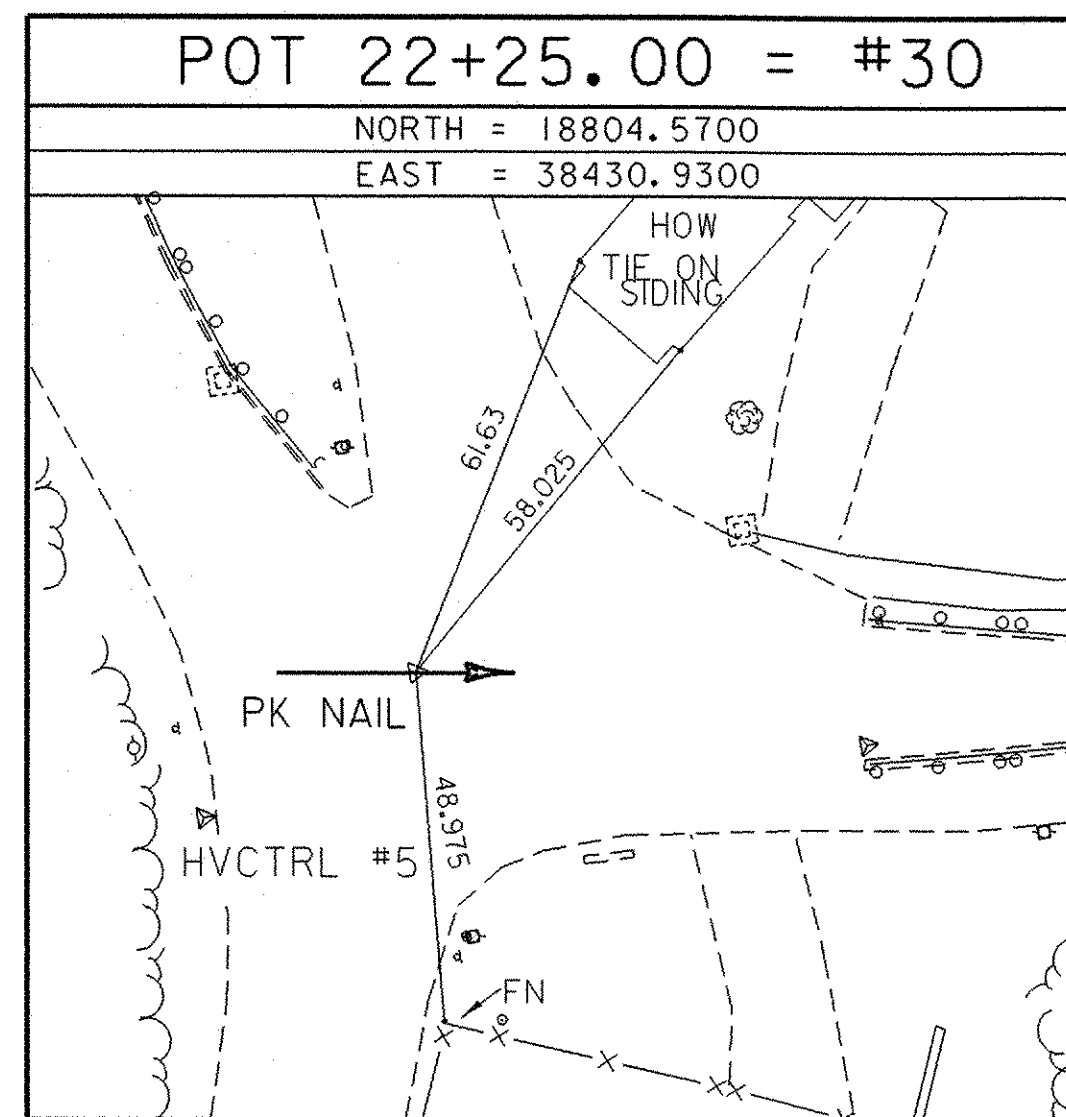
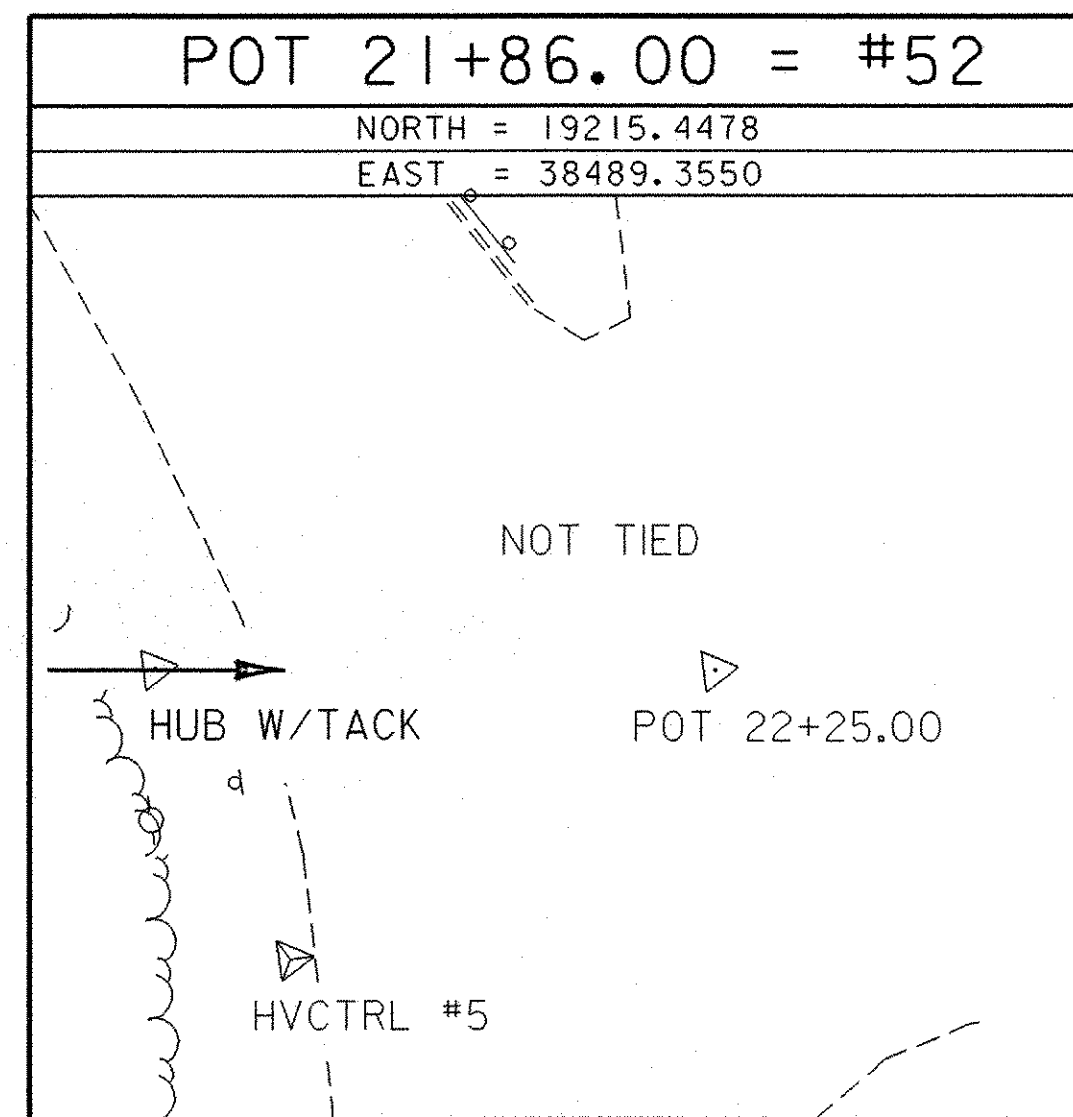
OLD ALIGNMENT TIES



• MAIN TRAVERSE COMPLETED: OCTOBER 12, 1998 BY R.D. GILMAN & T.J. COMPANION

• ALIGNMENT STAKED: 10/12/98 BY Bettigole Andrews & Clark, Inc.

ALIGNMENT TIES



• ALIGNMENT COMPLETED 12/16/03 BY R.GILMAN & P.WINTERS

DATUM

VERTICAL	NAVD 88
HORIZONTAL	NAD 83/92
ADJUSTMENT	compass

NOTE ALL TIE DISTANCES ARE IN FEET

PROJECT NAME: Barre City
PROJECT NUMBER: HDP 9281(1)

FILE NAME: 92J099/survey/xj099t1.dgn	PLOT DATE: 16-JUN-2004
PROJECT LEADER: C. Keller	DRAWN BY: R. Bullock
DESIGNED BY: K. Rutter	CHECKED BY: T. A. Sumner
	SHEET 12 OF 58