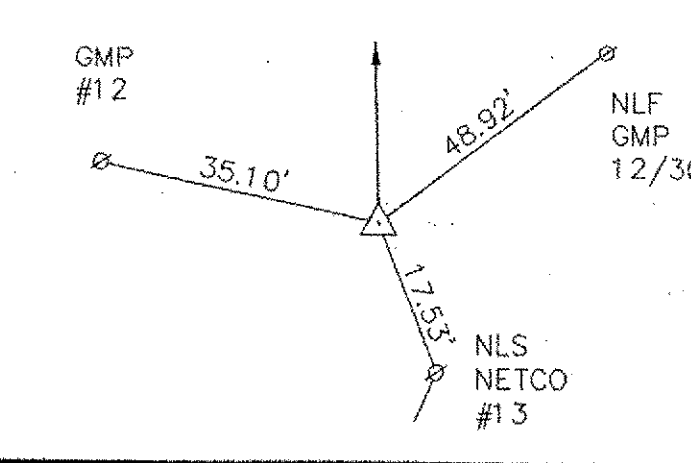


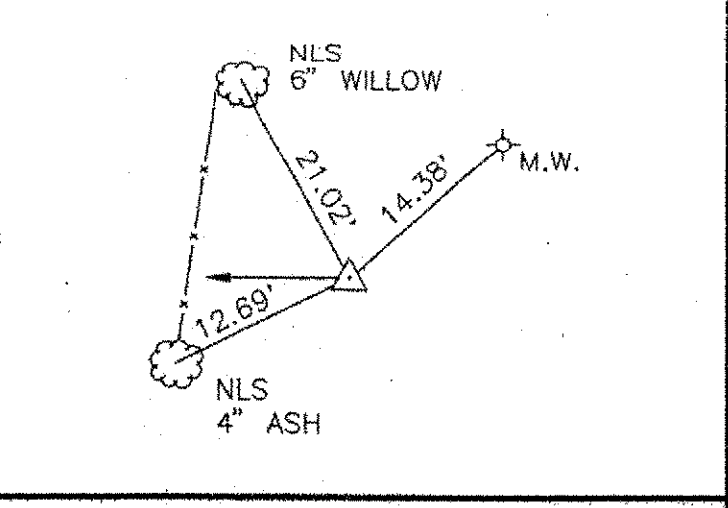
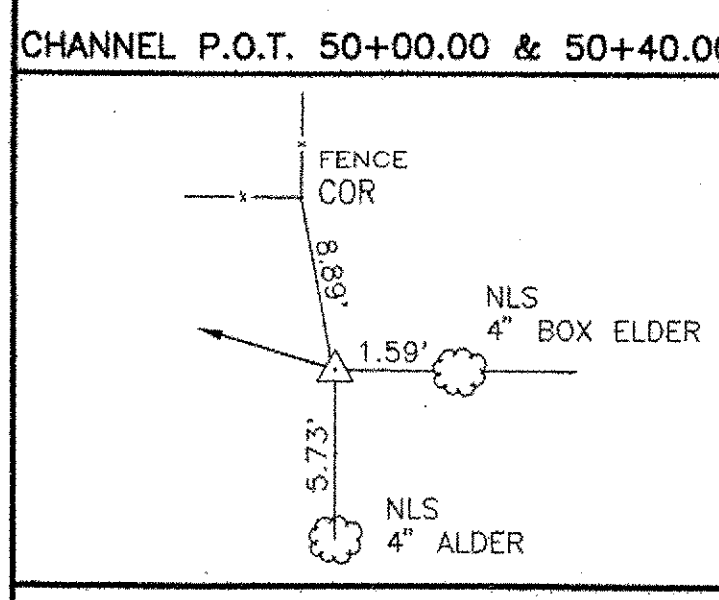
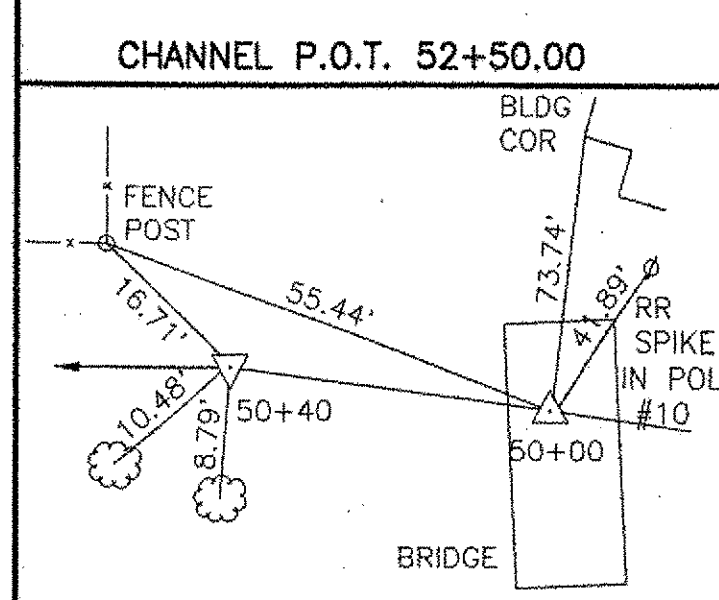
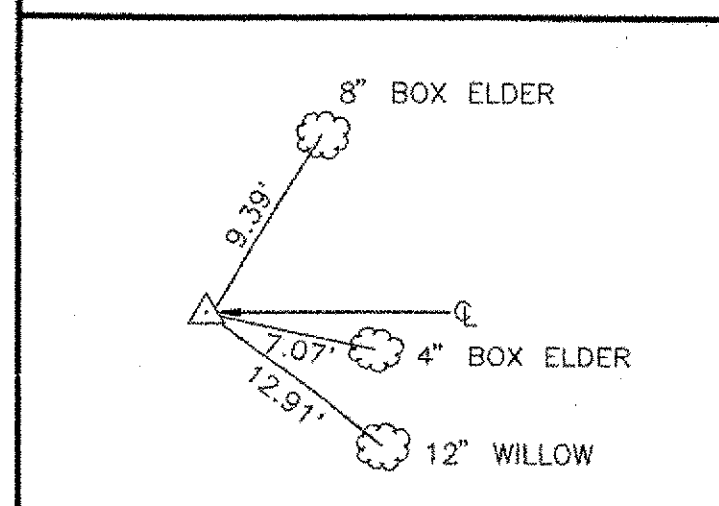
P.O.T. 5+75.00



P.O.T. 2+00.00

BEGIN ROW PROJECT
HDP 9281(I) STA. 2+35
31' RT.

END ROW PROJECT
HDP 9281(I) STA. 5+00



VERTICAL GRANITE CURB
STA. 2+30 TO STA. 2+58 RT.
STA. 2+88 TO STA. 3+30 RT.
STA. 2+50 TO STA. 2+67 LT.
STA. 2+92 TO STA. 3+30 LT.
STA. 4+47 TO STA. 4+83 LT. (12' TO 17')
STA. 4+47 TO STA. 4+91 RT.
STA. 5+22 TO STA. 5+40 RT.

PORTLAND CEMENT SIDEWALK - 5"
STA. 2+44 TO STA. 3+30 RT.
STA. 4+47 TO STA. 4+91 RT.
STA. 4+47 TO STA. 4+82 LT.
STA. 5+11 TO STA. 5+40 RT.

PORTLAND CEMENT SIDEWALK - 8"
STA. 4+91 TO STA. 5+11 RT.

RESETTING RAIL
STA. 3+20 TO STA. 3+25 RT.

CONSTRUCT DRIVE
STA. 2+70 LT. - 14' GRAVEL (SKEWED)
STA. 2+70 RT. - 16' GRAVEL
STA. 5+00 RT. - 23' PAVED

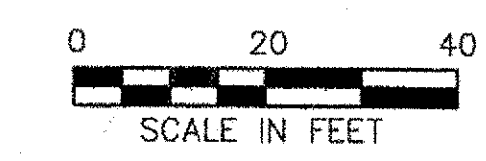
ALUMINUM APPROACH RAILING
STA. 2+93 TO STA. 3+32 LT.
STA. 2+92 TO STA. 3+32 RT.
STA. 4+47 TO STA. 4+72 LT.
STA. 4+47 TO STA. 4+87 RT.

GENERAL NOTE
THE CROSSOVER CROWN AND CROWN LINE SHALL EXTEND FROM STA. 2+45± LT. TO STA. 3+00 (12' LT.) AND STA. 4+80 (Q) TO STA. 5+40 RT. RESPECTIVELY AT APPROXIMATE 20:1 TAPERS.

REMOVAL OF EXISTING CURB
STA. 5+13 TO STA. 5+40 RT.

REMOVING AND RESETTING FENCE
STA. 4+16 TO 4+43 LT.
STA. 4+25 TO 4+45 RT.

REMOVING AND RESETTING ROCKS
STA. 2+50 TO STA. 2+65 LT., "ROCKS" TO BE REMOVED OR RESET AS DIRECTED



STATE OF VERMONT
AGENCY OF TRANSPORTATION

CITY OF	BARRE	BRIDGE NO.	B-11
LOG STA.			
STREET NAME	GRANITE STREET	SURV. STA.	
GRANITE STREET OVER STEVENS BRANCH			
PLAN			
DESIGNED BY	SWB	DRAWN BY	GNS
CHECKED BY	DATE	BRIDGE DESIGN SUPERVISOR	DATE
PROJECT	BARRE CITY	PROJECT NO.	HDP 9281(1)
BA&C DRAWING NO.	92038G82/20	DATE	10/07/94
R.O.W. SHEET 7 OF 7 SHEETS			

BETIGOLE ANDREWS & CLARK, INC.
Consulting Engineers

3-338682 Mon Oct 10 16:29:32 1994