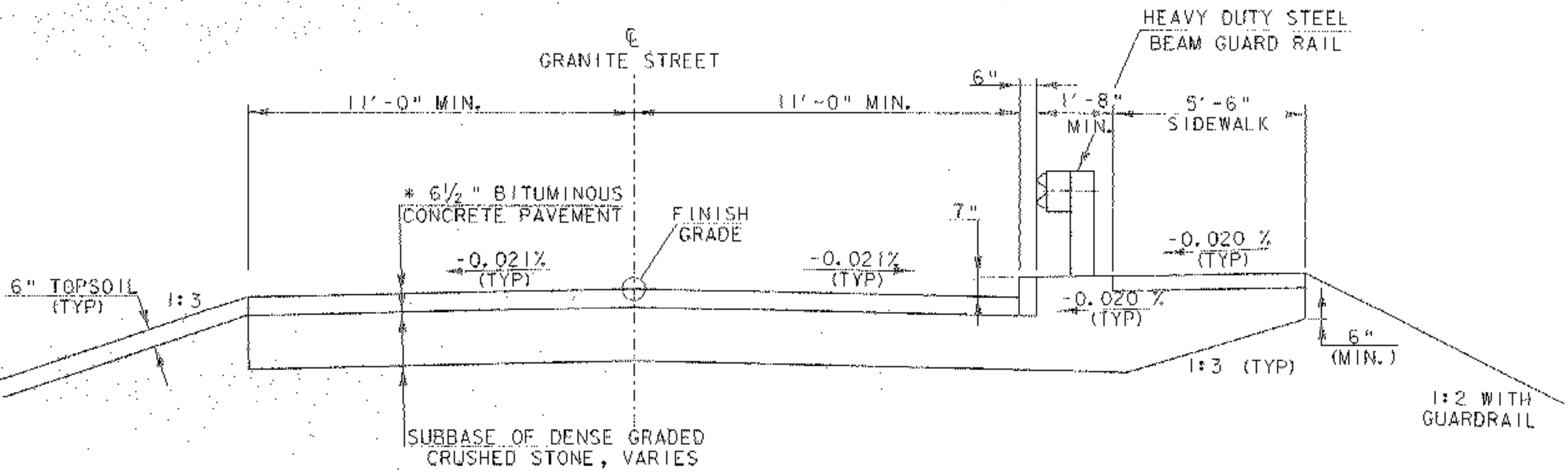


BRIDGE TYPICAL SECTION

SCALE 3/8" = 1'-0"

\* 1 1/2" TYPE III OVER 1 1/2" TYPE IV

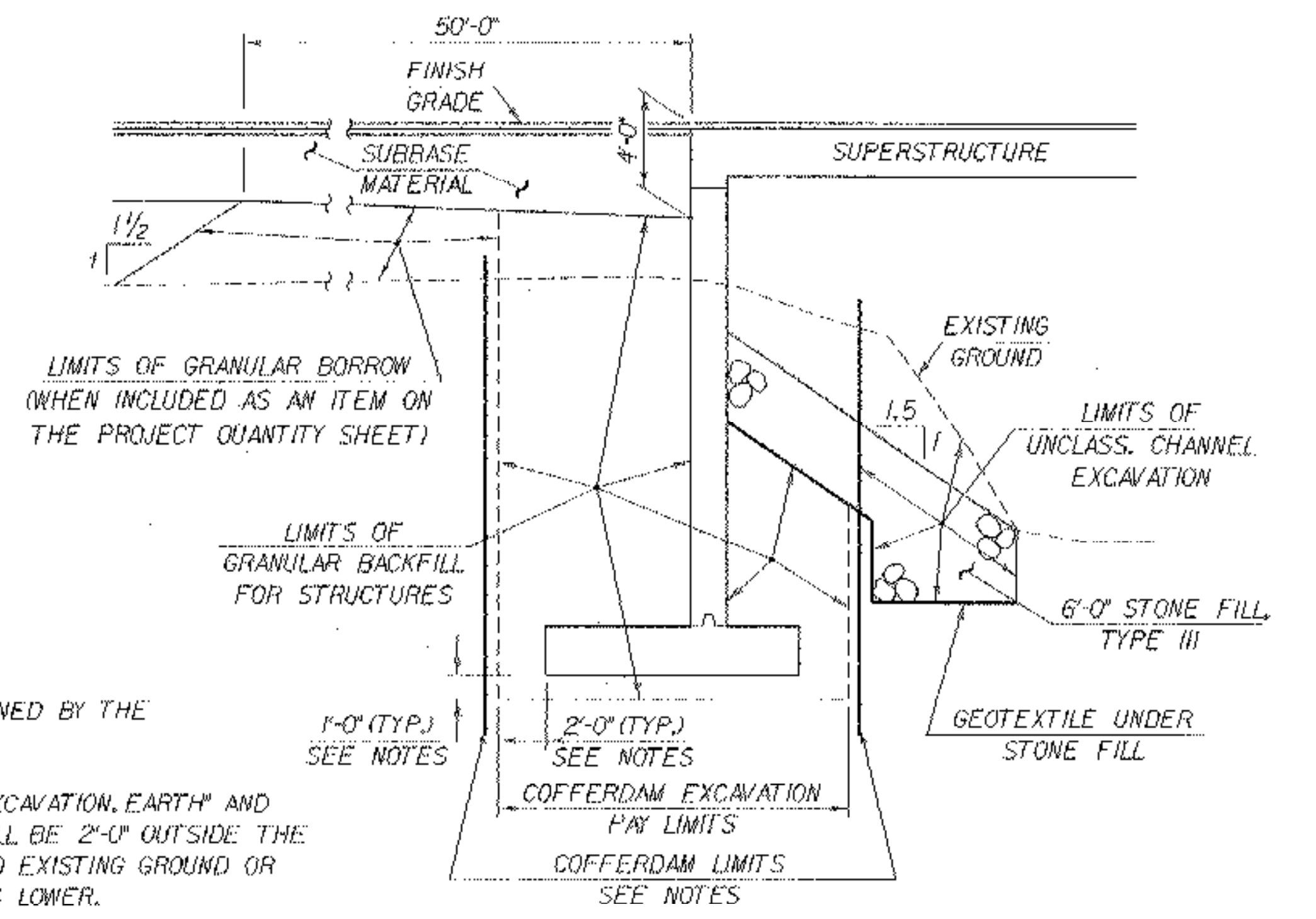


ROADWAY TYPICAL SECTION

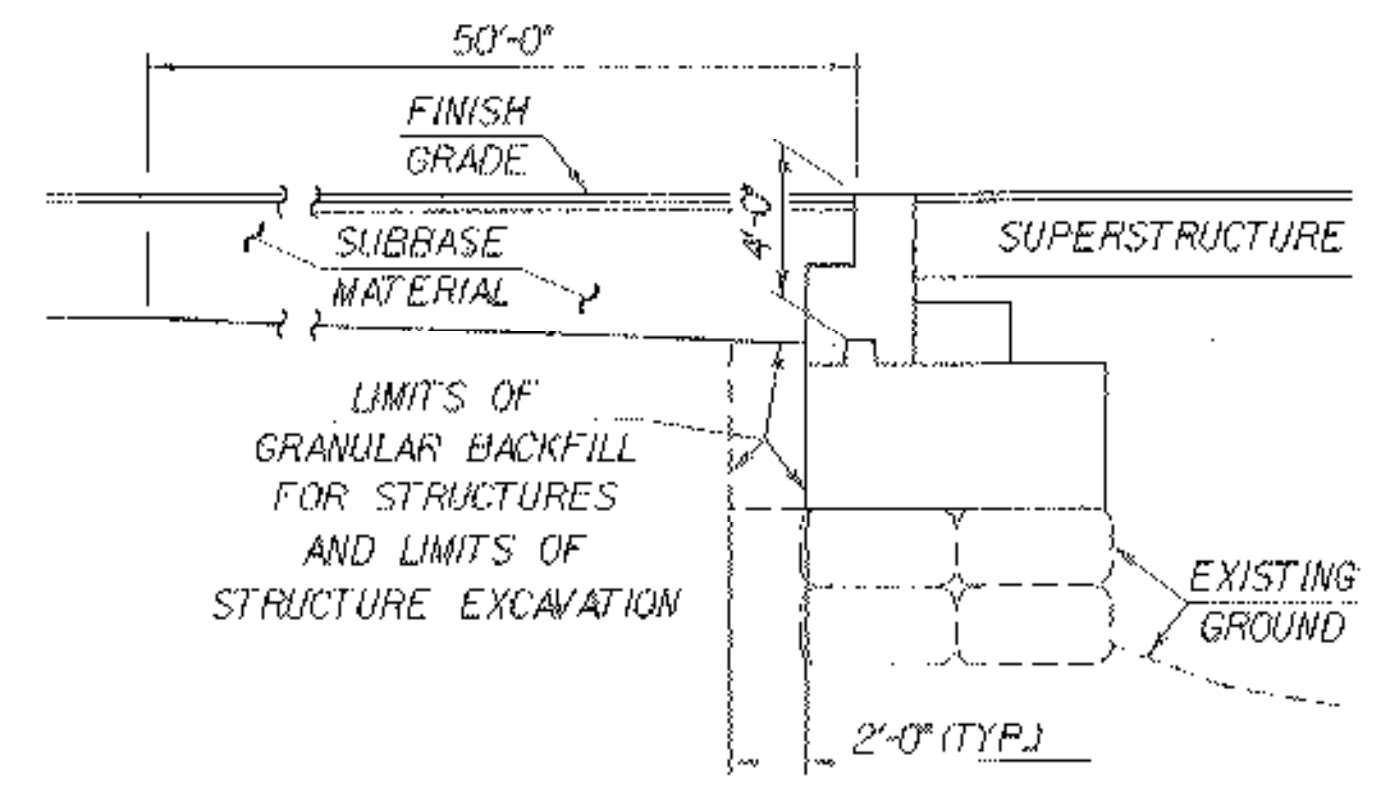
SCALE 3/8" = 1'-0"

\* 1 1/2" TYPE III OVER 1 1/2" TYPE IV OVER 3 1/2" TYPE I

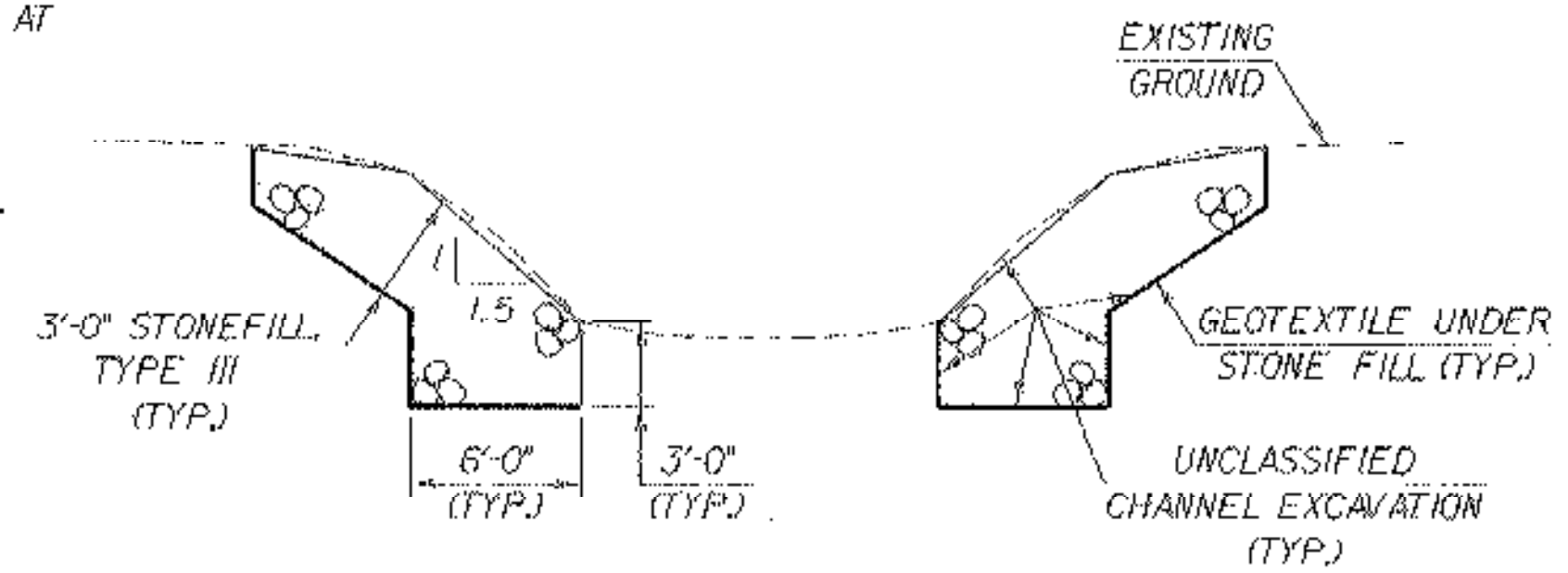
6 1/2"



ABUTMENT NO.1 SECTION (NOT TO SCALE)



ABUTMENT NO.2 SECTION (NOT TO SCALE)



TYPICAL CHANNEL SECTION (NOT TO SCALE)

\* GRUBBING MATERIAL SHALL NOT BE PLACED ON THE STONE FILL IN THE AREA UNDER THE BRIDGE. WHENEVER CHANNEL SLOPE INTERSECTS ROADWAY SUBBASE, GRUBBING MATERIAL SHALL BEGIN AT THE BOTTOM OF SUBBASE.

- NOTES**
1. COFFERDAM LIMITS TO BE DETERMINED BY THE CONTRACTOR.
  2. THE PAY LIMITS OF "COFFERDAM EXCAVATION, EARTH" AND "COFFERDAM EXCAVATION, ROCK" SHALL BE 2'-0" OUTSIDE THE PERIMETER OF THE FOOTING, UP TO EXISTING GROUND OR BOTTOM OF SUBBASE, WHICHEVER IS LOWER.
  3. ONE FOOT UNDERCUT AS DETERMINED NECESSARY BY THE RESIDENT ENGINEER.
  4. IF A COFFERDAM IS CONSTRUCTED WHICH IS LARGER THAN THE INDICATED COFFERDAM EXCAVATION PAY LIMITS, PAYMENT FOR ALL UNCLASSIFIED CHANNEL EXCAVATION, INCLUDING THAT PORTION WHICH IS INSIDE THE COFFERDAM BUT OUTSIDE THE COFFERDAM EXCAVATION PAY LIMITS, WILL BE MADE AT THE CONTRACT UNIT PRICE FOR UNCLASSIFIED CHANNEL EXCAVATION.
  5. SEE SHEET 41 FOR COFFERDAM LIMITS FOR WINGWALL #1.

MATERIAL ITEM	TOLERANCE
PAVEMENT	± 1/4" TOTAL THICKNESS
BASE COURSE	± 1/2"
SURBASE	± 1"
SAND BORROW	± 1"

**TYPICAL SHEET**

PROJECT NAME: BARRE CITY  
 PROJECT NUMBER: HDP 9281(I)  
 FILE NAME: /str5/92j099/sj099typ.dgn  
 PROJECT LEADER: C. KELLER  
 DESIGNED BY: K. RUTTER  
 sj099typ.1  
 PLOT DATE: 16-JUN-2004  
 DRAWN BY: K. RUTTER  
 CHECKED BY: T.A. SUMNER  
 SHEET 3 OF 58