

| TEMP | "A" DISTANCE | "B" DISTANCE |
|------|--------------|--------------|
| 0°F  | 1 13/16"     | 1 9/16"      |
| 15°F | 5/8"         | 1 3/8"       |
| 30°F | 1 7/16"      | 1 3/16"      |
| 45°F | 1 1/4"       | 1"           |
| 60°F | 1 5/16"      | 1 1/16"      |
| 75°F | 3/4"         | 1/2"         |
| 90°F | 9/16"        | 5/16"        |

RECEIVED  
 OK'D BY *JMP* OK'D BY *OW*  
 FEB 06 2006  
 SUBMITTED BY *OW* APPROVED BY *AS NOTED*  
 DATE 4.1.06

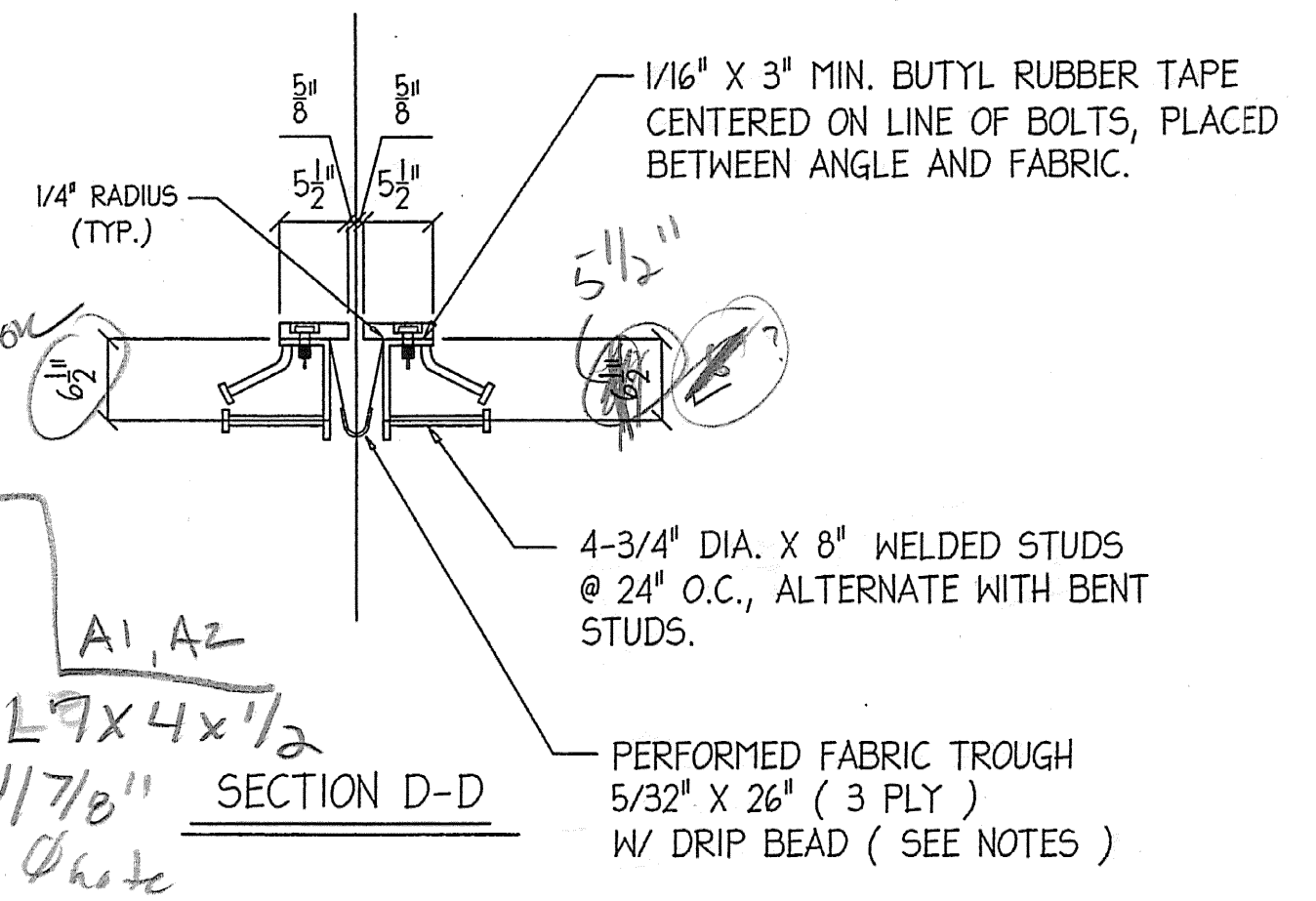
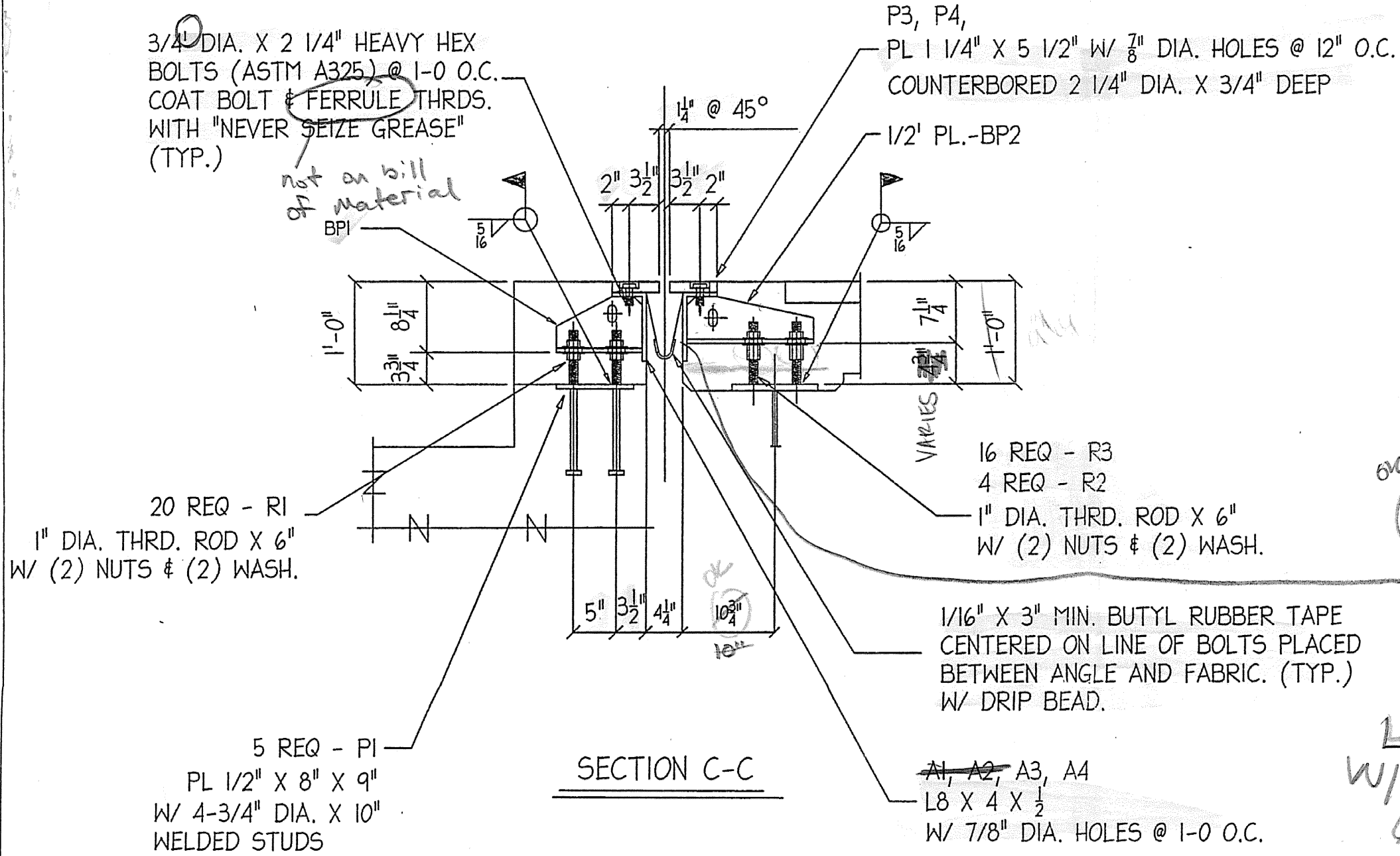
CCS CONSTRUCTORS LLC  
 138 MUNSON AVENUE  
 MORRISVILLE, VT 05661

RECEIVED  
 FEB - 7 2006

PROJECT NO. = JOHNSON, VT.  
 BHO 1448 (18)

| EXPANSION JOINT (EJ-1) @ ABUTMENT #1 |               |
|--------------------------------------|---------------|
| DATE SUB.                            | PROJECT       |
| DATE APP.                            | LOCATION      |
| DATE DIST.                           | ARCHITECT     |
|                                      | ENGINEER      |
|                                      | CUSTOMER      |
|                                      | C.C.S.        |
| MERRIMACK SHEET METAL                |               |
| 119 HALL ST.                         |               |
| CONCORD, N.H., 03301                 |               |
| TEL. (603) 224-7766                  |               |
| FAX. (603) 224-7925                  |               |
| REV. NO.                             | DATE          |
| DESCRIPTION                          |               |
| HOLE: 13/16" (U.O.)                  | DATE: 1-24-06 |
| PAINT: GALVANIZED                    |               |
| DR BY                                | KJM           |
| REV BY                               |               |
| JOB NO.                              | 0567          |
| DWG NO.                              | E1            |

- NOTES:
- 1.) PREFORMED FABRIC MATERIAL SHALL BE CONTINUOUS AND SHALL CONFORM TO SUBSECTION 707.07.
  - 2.) BUTYL RUBBER TAPE SHALL CONFORM TO AASHTO SPEC. M-198, TYPE II.
  - 3.) ALL STEEL COMPONENTS SHALL BE AASHTO M270, GRADE 36, GALVANIZED OR METALIZED AS PER SUBSECTION 506.15 (a) OR (b) UNLESS OTHERWISE NOTED.
  - 4.) THE L8 X 4 X 1/2 ANGLES SHALL BE FURNISHED AS ONE CONTINUOUS PIECE. THE 1 1/4" X 5 1/2" BARS EACH SIDE OF THE JOINT SHALL BE PROVIDED IN TWO EQUAL LENGTHS.
  - 5.) A DRIP BEAD OF 1/4" X 7" STRIP OF PREFORMED MATERIAL SHALL BE CEMENTED TO THE BOTTOM OF THE FABRIC TROUGH USING AN ADHESIVE APPROVED BY THE MANUFACTURER. THE DRIP BEAD SHALL BE APPLIED 1" FROM THE DOWNSPOUT END OF THE TROUGH.
  - 6.) THE EXPANSION JOINT SHALL BE SHOP ASSEMBLED AND SHIPPED AS ONE UNIT.
  - 7.) ALL BOLTS, STUDS, AND RELATED HARDWARE EXCEPT AS NOTED SHALL BE ASTM A307 AND SHALL BE GALVANIZED IN ACCORDANCE WITH ASTM A153 (AASHTO M232).
  - 8.) Prior to galvanizing, all corners and edges of steel plates, shapes, etc., shall be ground to a 1/16" (1.6mm) radius.



3/4" DIA. X 2 1/4" HEAVY HEX BOLTS (ASTM A325) @ 1-0 O.C. COAT BOLT & FERRULE THRDs. WITH "NEVER SEIZE GREASE" (TYP.)

not on bill material

1/2" PL.-BP2

1/16" X 3" MIN. BUTYL RUBBER TAPE CENTERED ON LINE OF BOLTS PLACED BETWEEN ANGLE AND FABRIC. (TYP.) W/ DRIP BEAD.

16 REQ - R3  
 4 REQ - R2  
 1" DIA. THRD. ROD X 6" W/ (2) NUTS & (2) WASH.

5 REQ - P1  
 PL 1/2" X 8" X 9"  
 W/ 4-3/4" DIA. X 10" WELDED STUDS

1/16" X 3" MIN. BUTYL RUBBER TAPE CENTERED ON LINE OF BOLTS PLACED BETWEEN ANGLE AND FABRIC. (TYP.) W/ DRIP BEAD.

AI, A2, A3, A4  
 L8 X 4 X 1/2  
 W/ 7/8" DIA. HOLES @ 1-0 O.C.

1/16" X 3" MIN. BUTYL RUBBER TAPE CENTERED ON LINE OF BOLTS, PLACED BETWEEN ANGLE AND FABRIC.

4-3/4" DIA. X 8" WELDED STUDS @ 24" O.C., ALTERNATE WITH BENT STUDS.

PERFORMED FABRIC TROUGH 5/32" X 26" (3 PLY) W/ DRIP BEAD (SEE NOTES)

AI, A2  
 L8 X 4 X 1/2  
 W/ 7/8" DIA. HOLES @ 1-0 O.C.