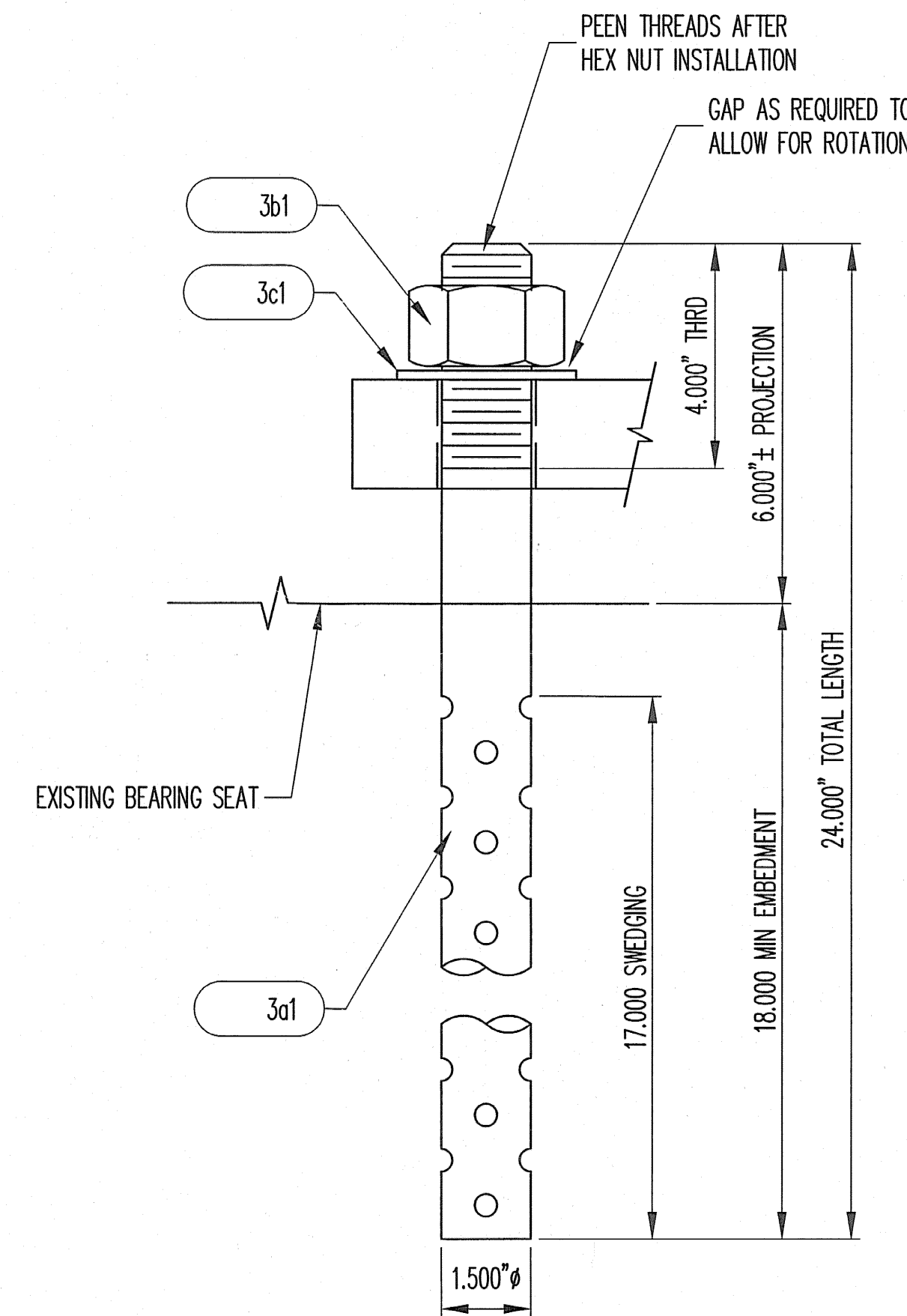


MK	QTY.	DESCRIPTION	MATERIAL	LENGTH	REMARKS	PART NO.
3A	16	SWEDGE ANCHOR ROD				
3a1	16	1.500"Ø X 24.000"	A307 GR C		17" SWEDGE, 4" THRD; A153-HDG	
3B	16	HEAVY HEX NUT				
3b1	16	1.500"Ø	A563-DH OR A194-2H		DRY LUBE; A153-HDG	
3C	16	PLATE WASHER				
3c1	16	0.375" X 3.000"	A36	3.000"	1.625" DIAMETER HOLE CTR; A123-HDG	

NOTE: ALL MATERIAL SPECIFICATION DESCRIPTIONS ARE ASTM, UNLESS OTHERWISE NOTED.

BRIDGE #6 ANCHOR BOLT SCHEDULE

DSB SHEET REF.	BRG MARK	LOCATION	QTY
16225-1121-01	1A	ABUT #1	8
16225-1121-02	2A	ABUT #2	8



ANCHOR ASSEMBLY DETAIL

SEE SHEET GN1 FOR GENERAL NOTES

RECEIVED
 CK'D BY: *Ma* OK'D BY: *me*
 MAR 15 2006
 RESUBMIT APPROVED
 BY: *RLW* DATE: 3/16/06

REV.	DESCRIPTION	DATE	DET.	CKD.
△	REVISE TITLE BLOCK	3/3/06	SP	PMG
	LOCATION — RAILROAD ST (TH 2) OVER LAMOILLE RIVER		ITEM	QUANTITY
	BRIDGE — 6		—	—
	△ PROJECT — AC BHO 1448(18) PROJECT NAME: JOHNSON		—	—
	F.A.P. NO. — —		—	—
	P.O. NO. — 996		—	—
	DESIGNER — VAOT		—	—
	CUSTOMER — CONTRACTORS CRANE SERVICE		—	—
	DESCRIPTION: ANCHOR BOLT ASSEMBLY	SCALE: N.T.S.	DRAWN BY: SP	CHECKED BY: PMG
	LAMOILLE CO., VT	DATE: 1/06	DATE: 1/06	DATE: 1/06
		PROJECT NUMBER: 16225	PRODUCT CODE: 1121	RELEASE: 1
				SHEET: 03

D.S. BROWN
 300 E. CHERRY STREET
 NORTH BALTIMORE, OHIO 45872
 419.257.3561
 FAX: 419.257.0332
 4201 NOREX DRIVE
 CHASKA, MINNESOTA 55318
 952.368.3000
 FAX: 952.448.7000
 DSBROWN.COM