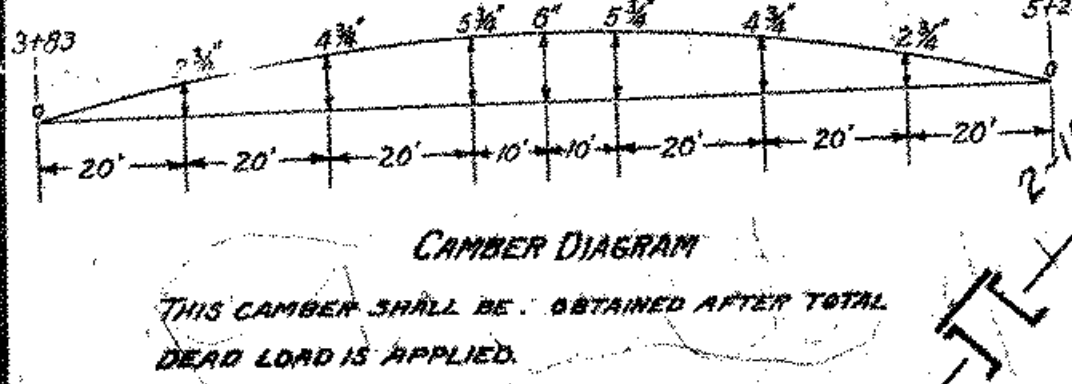


PAINT
 SHOP PAINT - ONE COAT OF APPROVED RED LEAD AND OIL
 FIELD PAINT - TWO COATS
 ONE COAT OF APPROVED RED LEAD AND OIL
 ONE COAT OF APPROVED GRAPHITE PAINT
 NO PAINT TO BE USED UNTIL APPROVED BY THE ENGINEER
 ALTERNATE SECTIONS OF EQUAL STRENGTH TO THOSE BILLED ON THIS SHEET
 MAY BE USED AT THE OPTION OF THE CONTRACTOR, IF APPROVED IN
 WRITING BY THE ENGINEER.

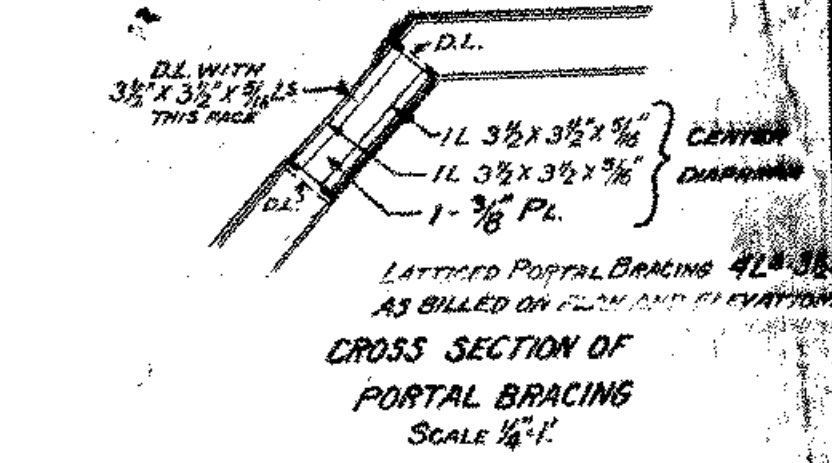
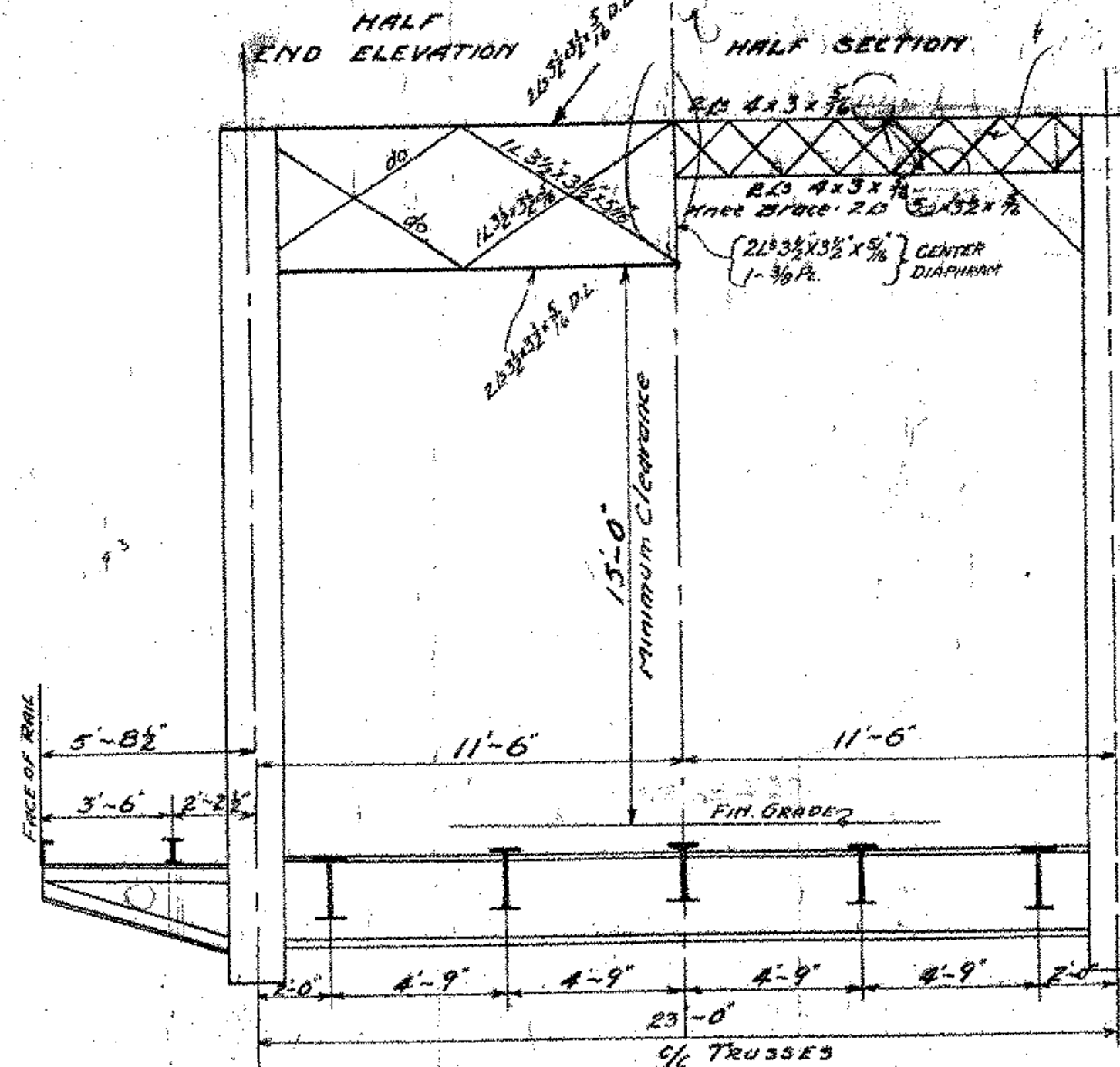
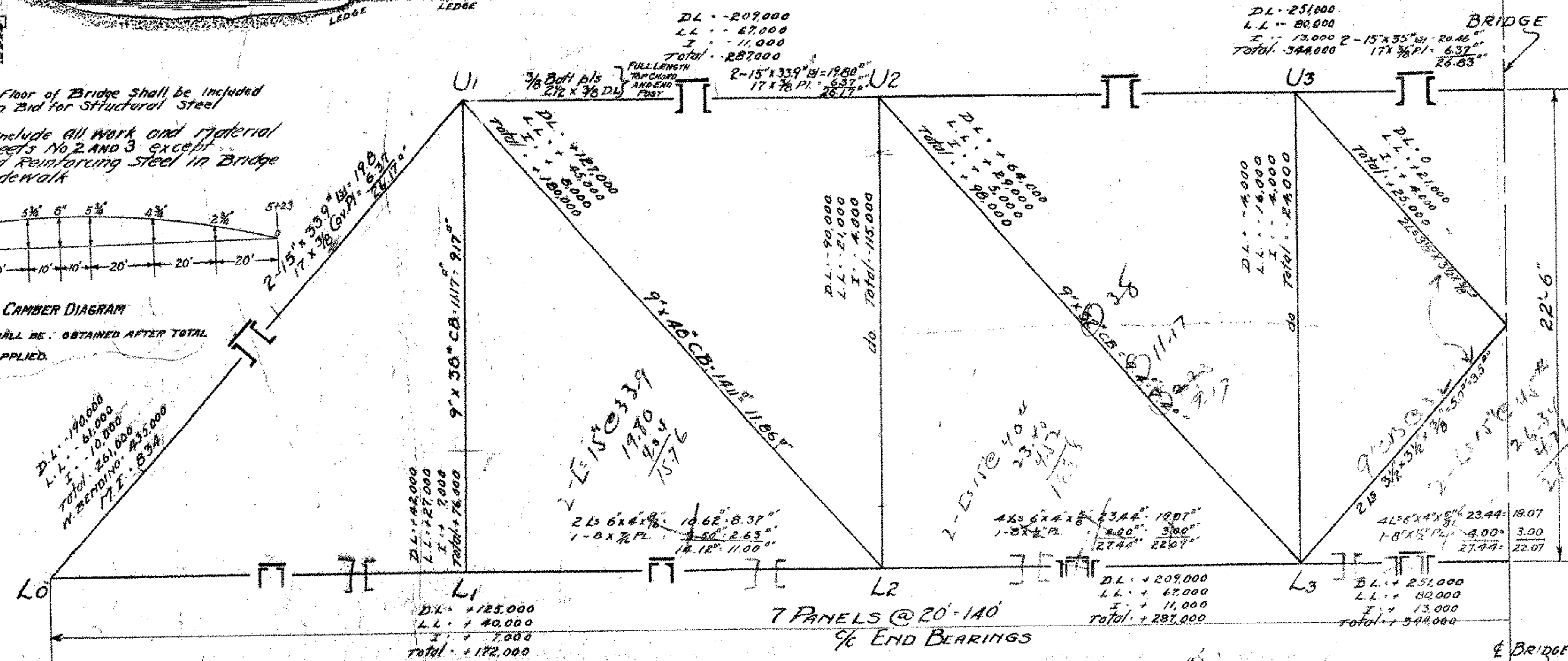
FLOOR DESIGNED FOR
 DEAD LOAD
 ROADWAY: 8" CONCRETE SLAB + 25' PAVING ALLOWANCE
 + WEIGHT OF STEEL
 SIDEWALK: 50' SQ. FT. + WEIGHT OF STEEL
 LIVE LOAD
 ROADWAY: 2-15 TON TRUCKS 15' WHEELS
 6' AXLES 85% OF LOAD ON REAR AXLES
 SIDEWALK: 80' PER SQ. FT.
 IMPACT
 STRINGERS: 38.5%
 FLOOR BEAMS: 25.4%

TRUSS DESIGNED FOR
 DEAD LOAD
 CONCRETE FLOOR PAVING 1300' + STEEL 650'
 + SIDEWALK (CONCRETE SLAB) 400' + 2350' PER LINE
 LIVE LOAD
 TWO LANES - H 15
 IMPACT
 I - L + 250
 I - L + 500
 RIVETS: 7/8"

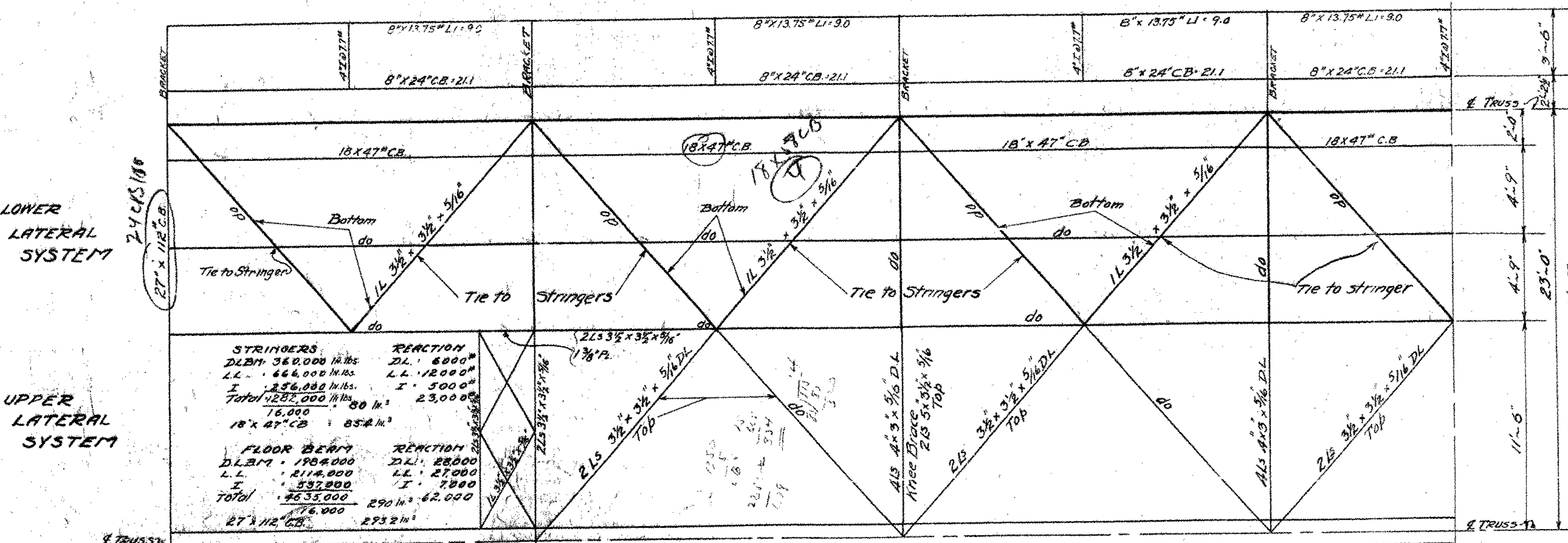
Drain Pipes in floor of Bridge shall be included
 in Lump Sum Bid for Structural Steel
 Lump Sum to include all work and material
 shown on sheets No. 2 and 3 except
 concrete and reinforcing steel in Bridge
 floor and sidewalk



REACTION
 D.L. 185,000
 L.L. 53,000
 I. 8,000
 Total 246,000



ROADWAY SLAB - 8" CONCRETE
 SIDEWALK SLAB - 4" CONCRETE
 FLOOR AND SIDEWALK TO BE
 SCALED AND FLOATED
 DAP CONCRETE & OVER ROADWAY
 STRINGERS
 & OVER SIDEWALK STRINGERS
 VARY ELEVATION OF ROADWAY
 STRINGERS TO GIVE CROWN OF
 2" TO CONCRETE SLAB
 TOP OF FLANGE OF OUTSIDE
 STRINGER TO BE LEVEL WITH
 TOP OF FLANGE OF FLOOR BEAM



SIDEWALK STRINGERS
 D.L. 120,000
 L.L. 180,000
 Total 300,000
 1-8" x 24" CB 18.8
 1-8" x 15" 9.0

PROVIDE APRON PLATES
 21" x 21" FOR ROADWAY
 21" x 6" FOR SIDEWALK
 BOLT ROADWAY PLATE TO
 END FLOOR BEAM, SIDEWALK
 PLATES TO SIDE WALK STRINGERS
 SUPPORT SIDEWALK APRON
 PLATE AT ROADWAY END

ANCHOR BOLTS
 4-1/8" SLEDGE BOLTS WITH WEDGES
 AT EACH SHOE EXTENDING INTO
 CONCRETE BRIDGESEAT AS
 DETAILED.

SPECIFICATIONS
 STANDARD SPECIFICATIONS FOR STEEL HIGHWAY
 BRIDGES
 U.S. DEPT. OF AGRICULTURE - DEPT. BULLETIN NO. 1227
 SHALL APPLY TO ALL STRUCTURAL STEEL.

IF DESIRED BEFORE DETAILING - STEEL ABUTMENT PLANS WILL BE
 FURNISHED
 SHEETS NO. 1, 2, AND 3 OF 1260 WITH SUPERSTRUCTURE

PLAN OF
 SUPERSTRUCTURE
 RAILROAD ST. BRIDGE
 OVER
 LAMOILLE RIVER
 JOHNSON, VT.
 BRIDGE No 38
 DISTRICT No 8

CORRECT
 A. D. Sisk
 BRIDGE ENGINEER
 APPROVED JAN. 27, 1928
 H. C. Saugent
 CHIEF ENGINEER

PROJECT NAME: JOHNSON
 PROJECT NUMBER: BHO 1448(18)
 HIGHWAY NO. 1 TH 2
 BRIDGE NO. 6
 OVER THE LAMOILLE RIVER
 FOR INFORMATIONAL PURPOSES ONLY
 SHEET 65A OF 73

Surveyed by: Stow
 Designed by: Shoenaker
 Drawn by: Perkins
 Traced by: Whitcomb & Larsen
 Checked by: Howard W. Mantel
 Series B No. 38-101 Filed
 Sheet 65A of 122 Sheets

TRUSS SYMMETRICAL ABOUT & EXCEPT SIDEWALK