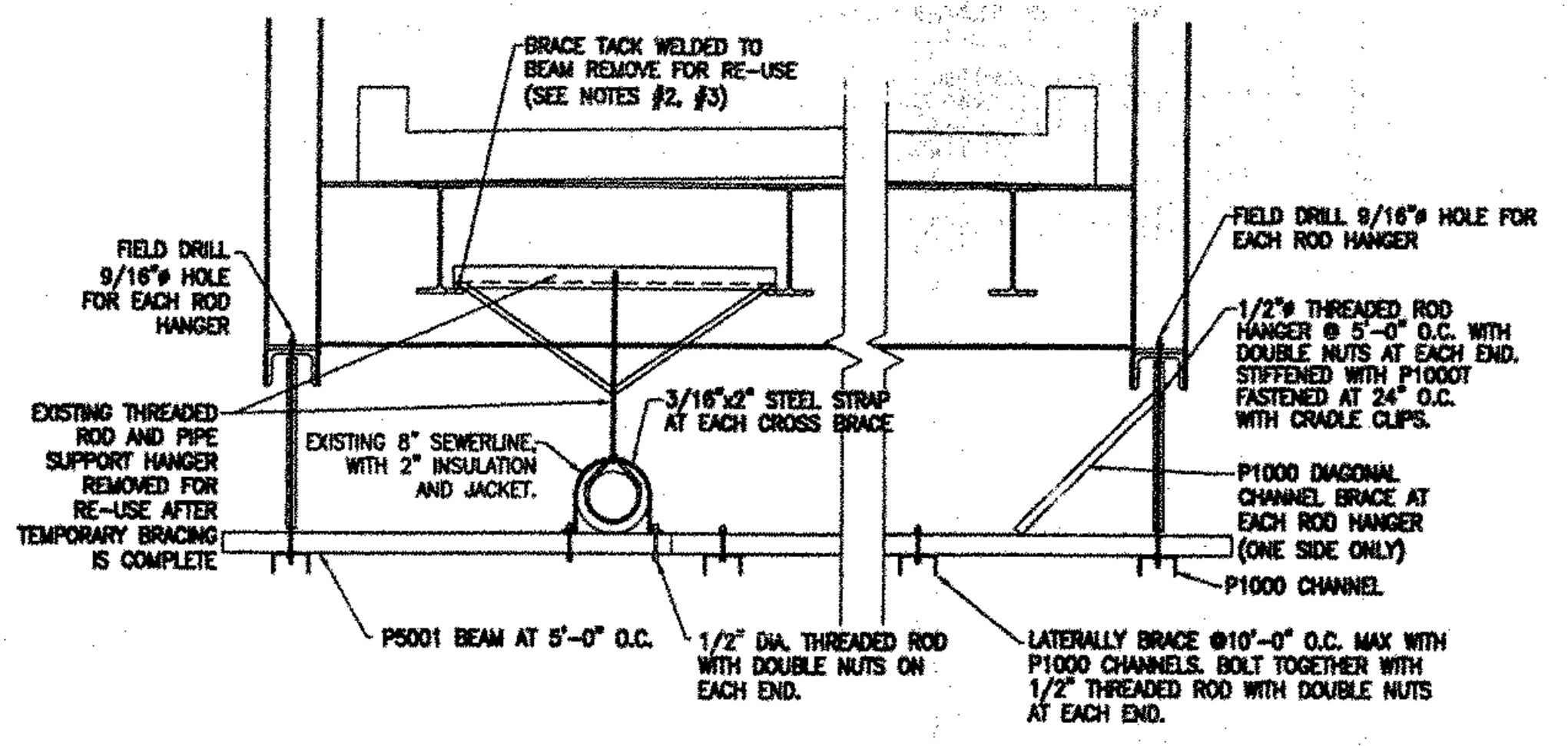
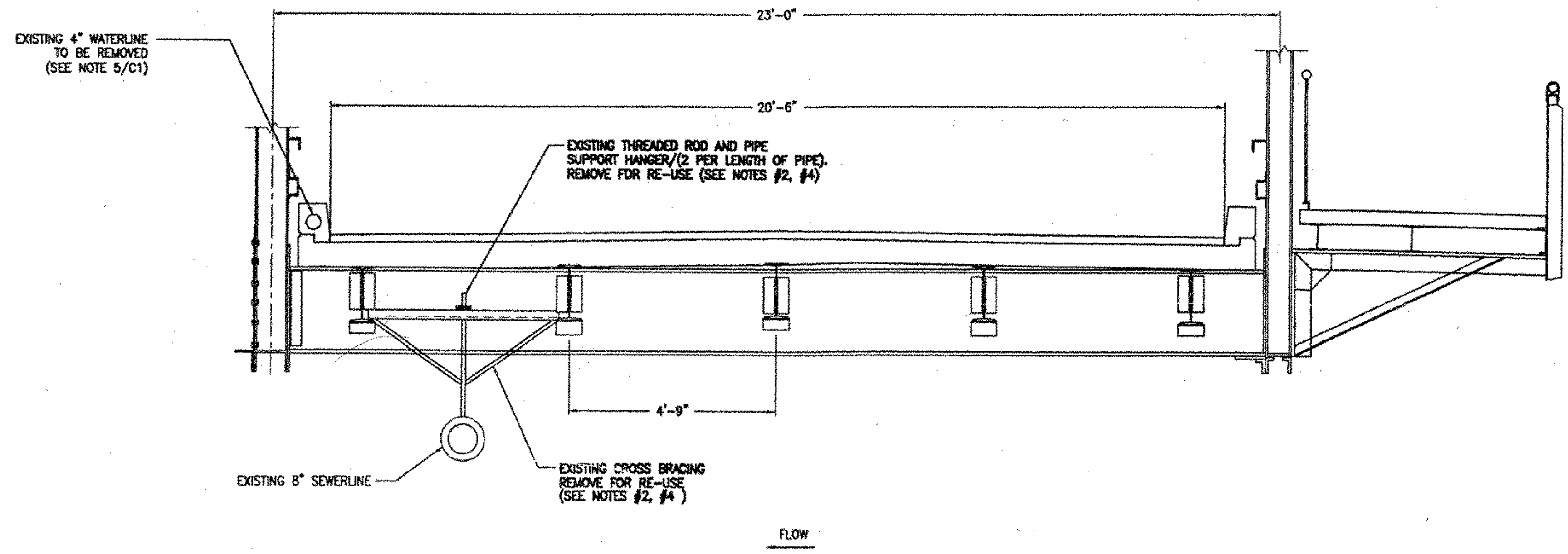


TEMPORARY SEWERLINE SUPPORT PLAN
 SCALE: 1/8" = 1'-0"



NOTES:
 1. TEMPORARY SUPPORT BEAMS, CHANNELS AND BRACES P1000, P1000T AND P5001 REFER TO UNISTRUT MODEL NUMBERS.

A TEMPORARY SEWERLINE SUPPORT SECTION AT 5'-0" O.C.
 SCALE: 1/2" = 1'-0"



B EXISTING SEWER AND WATER SUPPORT SECTION
 SCALE: 1/2" = 1'-0"

SEWERLINE SUPPORT SEQUENCING NOTES:

- INSTALL TEMPORARY SEWER LINE SUPPORT BRACING, AS SHOWN ON DRAWING C3. TEMPORARY BRACING SHALL BE INSPECTED BY ENGINEER BEFORE EXISTING BRACING IS REMOVED. MAINTAIN SEWERLINE SLOPE PER NOTE #6C1.
- REMOVE EXISTING BRACING FOR RE-USE AT CONTRACTOR'S OPTION, NEW SUPPORT MEMBERS MAY BE USED. MATCH EXISTING. THE CONTRACTOR SHALL SUBMIT A PLAN TO THE VAOT STRUCTURES ENGINEER FOR THE REATTACHMENT OF THE SEWER LINE SUPPORTS TO THE STRINGERS.
- AFTER BRIDGE DECK REPLACEMENT HAS BEEN COMPLETED, RE-INSTALL EXISTING SEWER LINE SUPPORTS. PAINT ALL STEEL MEMBERS AFTER INSTALLATION PER PAINT SPECIFICATIONS FOR BRIDGE MEMBERS (VAOT SUPPLEMENTAL SPECIFICATION 513).
- AFTER PERMANENT BRACING HAS BEEN INSPECTED BY THE ENGINEER, REMOVE AND DISPOSE OF ALL TEMPORARY BRACING.

VILLAGE OF JOHNSON
 JOHNSON, VERMONT
 RAILROAD STREET BRIDGE AND
 UTILITY IMPROVEMENTS

NO.	DATE	REVISION DESCRIPTION	CHECKED

DESIGNED: CGM
 DRAWN: JRB
 CHECKED: BFA
 DATE: APR. 2002

PROJECT NO.: 98013
 DRAWING NO.: C3
 SHEET 3 OF 4

PROJECT NAME: JOHNSON
 PROJECT NUMBER: BHO 1448(18)
 HIGHWAY NO.: TH 2
 BRIDGE NO.: 6
 OVER: THE LAMOILLE RIVER

SHEET 52 OF 75