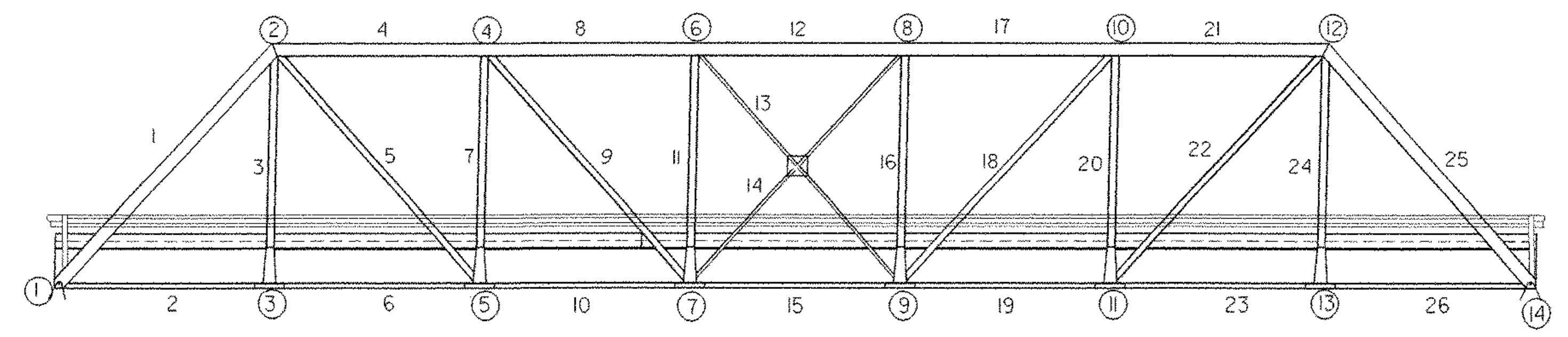
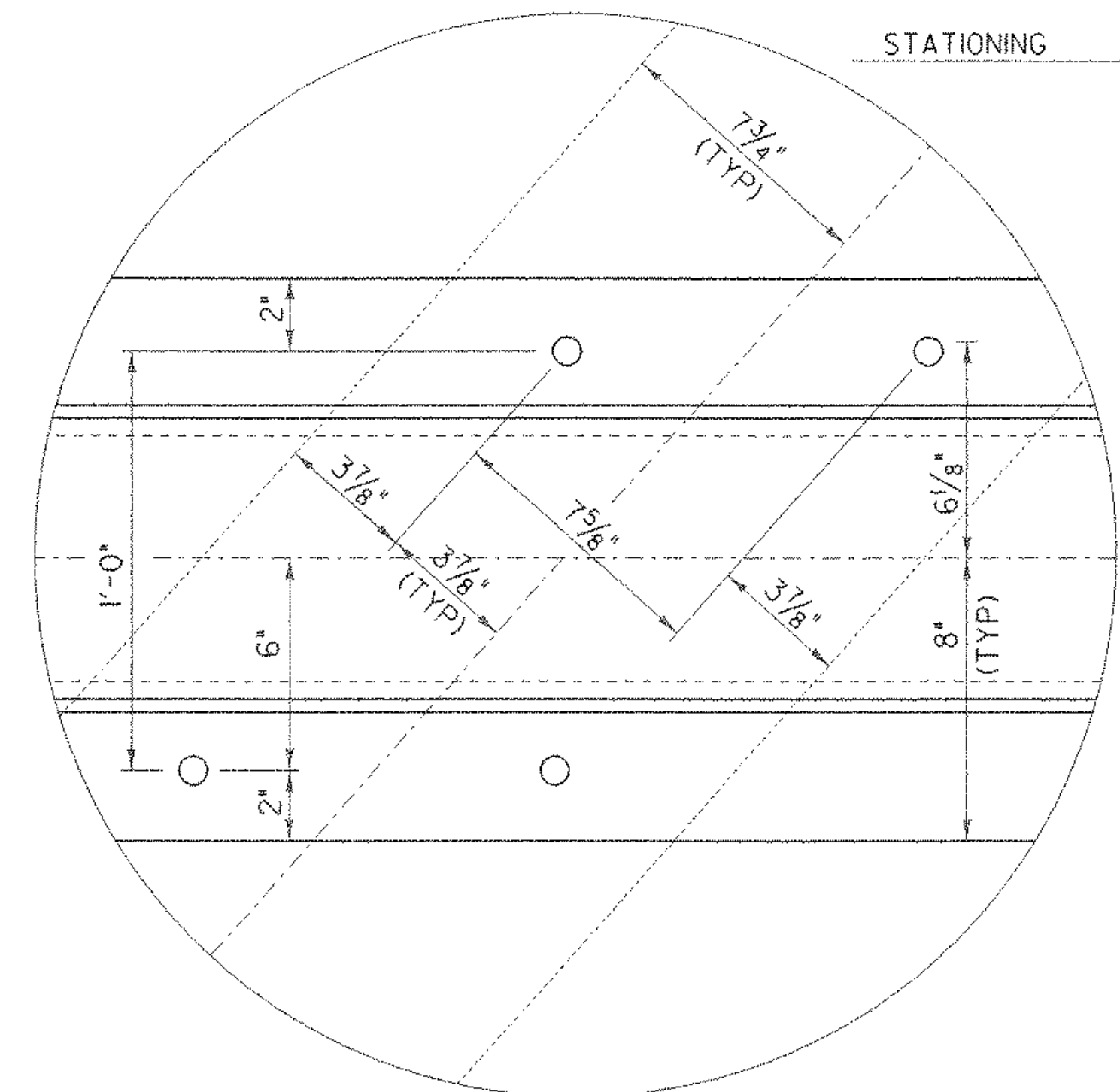


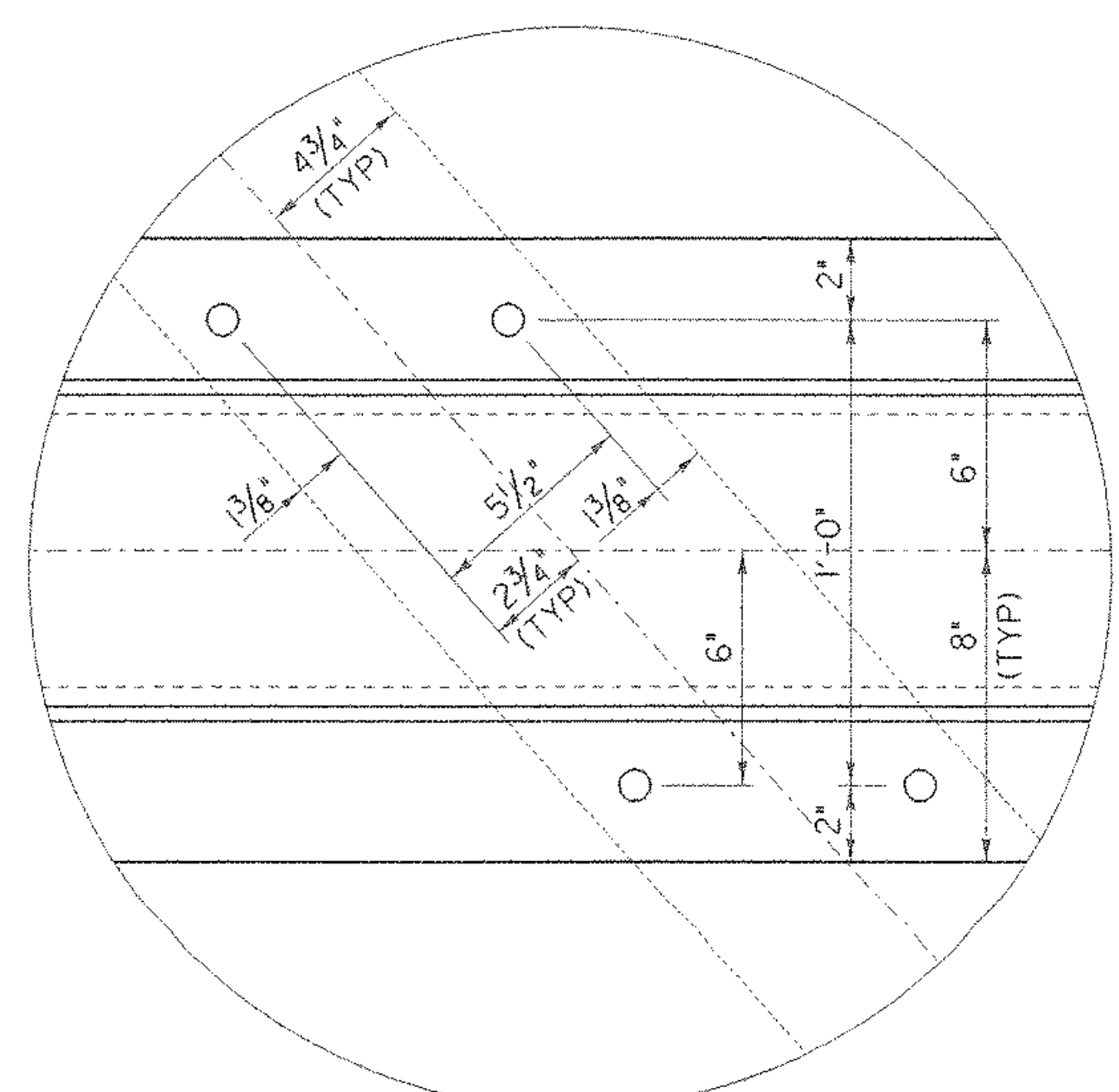
UPSTREAM MEMBERS
NTS



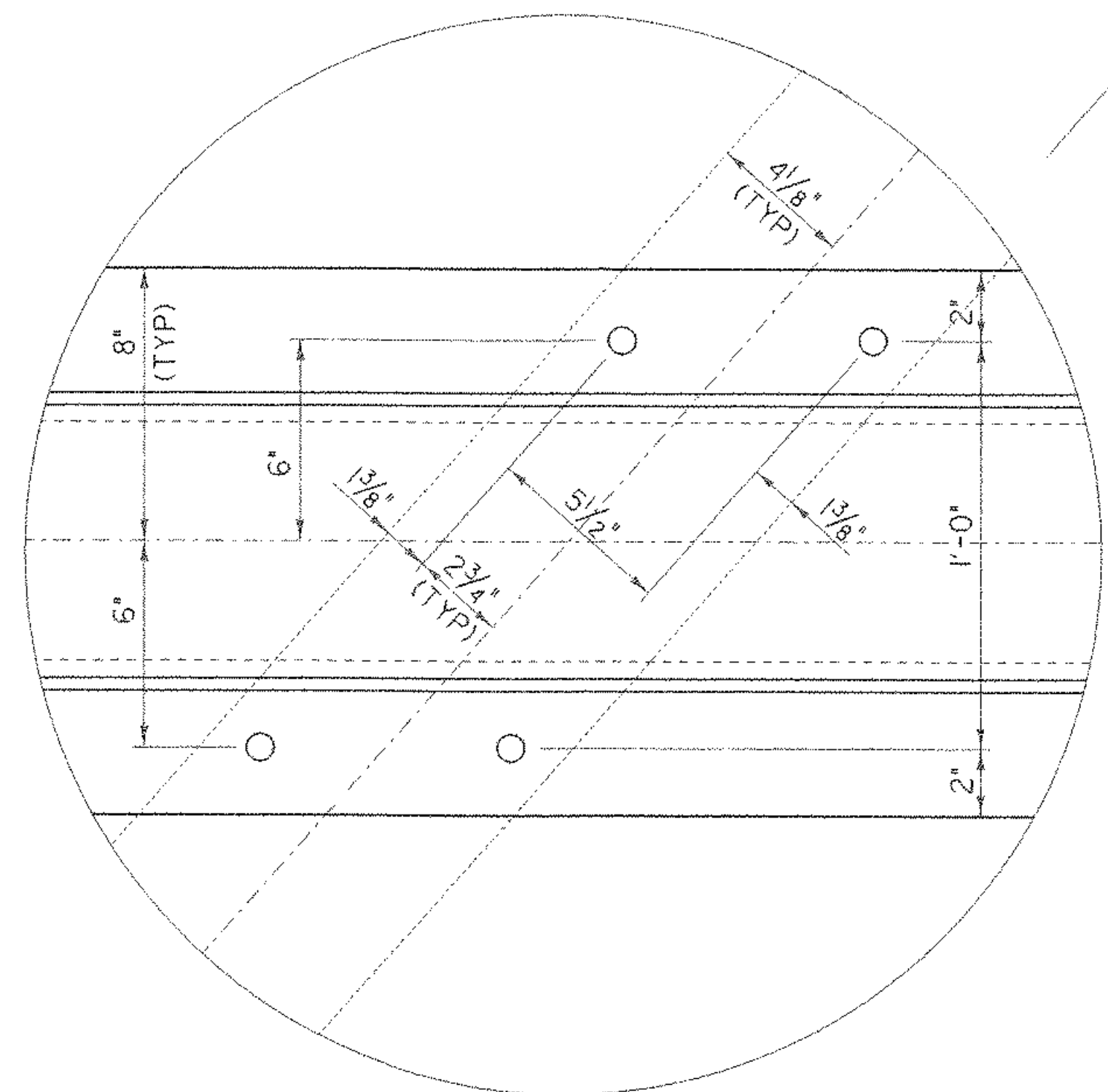
DOWNSTREAM MEMBERS
NTS



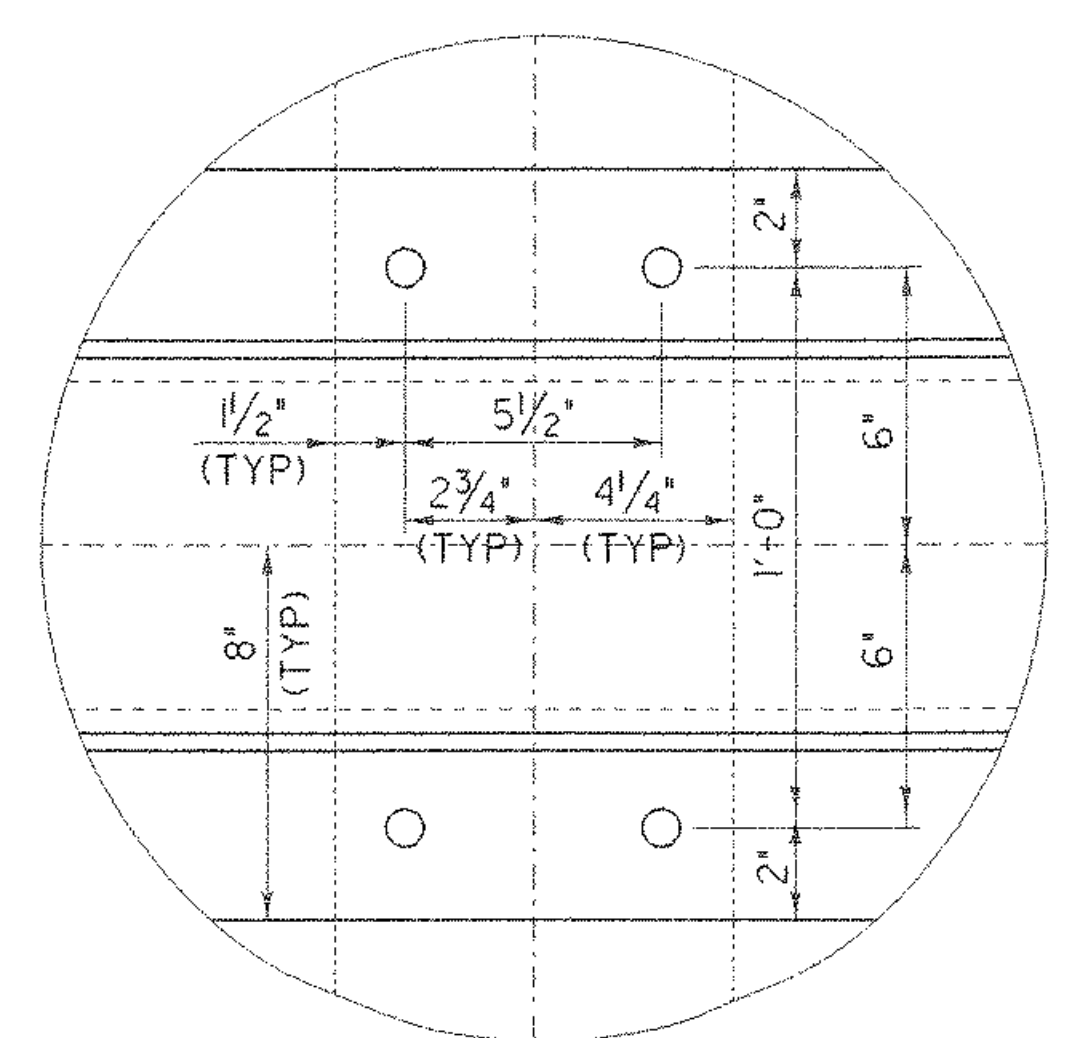
UPSTREAM MEMBER 1
SCALE: 3" = 1'-0"



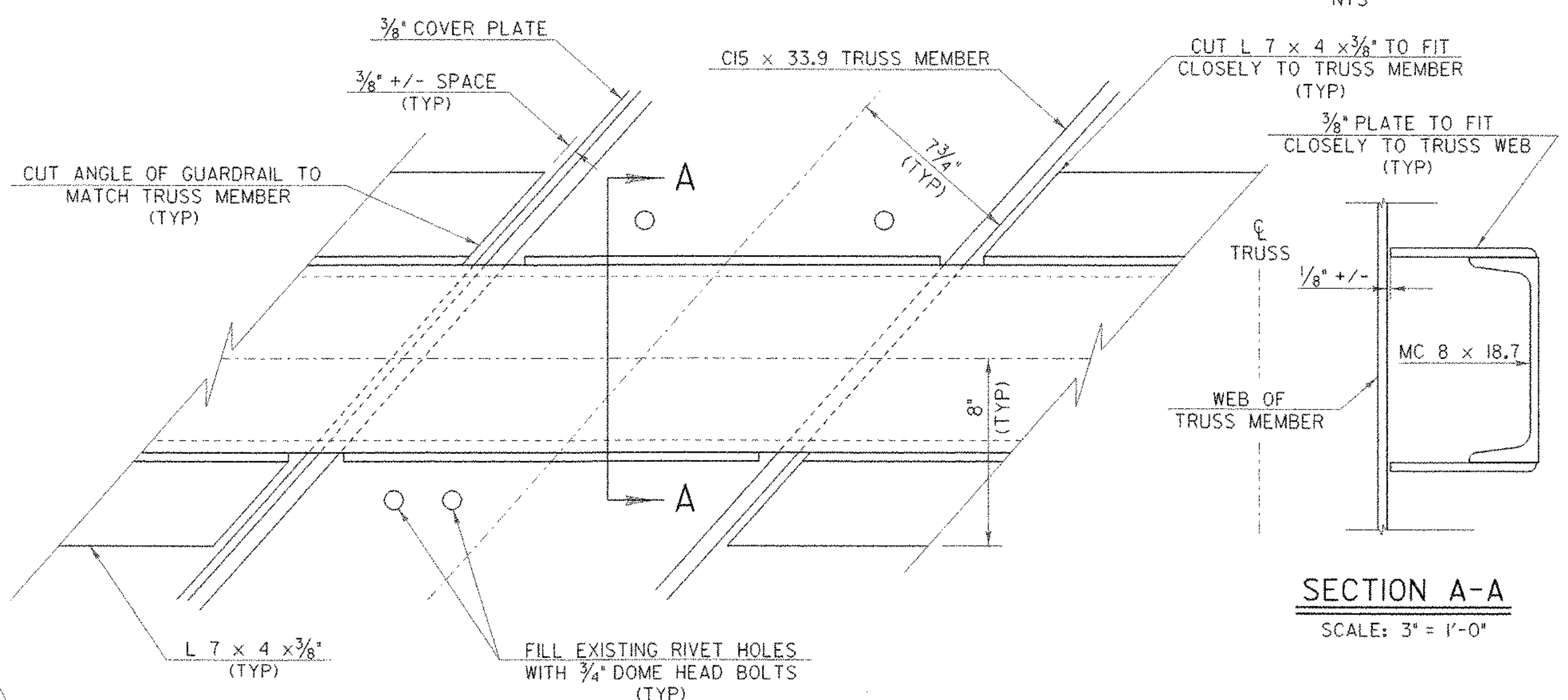
MEMBERS 5, 9 AND 13
SCALE: 3" = 1'-0"



MEMBERS 14, 18 AND 22
SCALE: 3" = 1'-0"



MEMBERS 3, 7, 11, 16, 20 AND 24
SCALE: 3" = 1'-0"



**DOWNSTREAM MEMBER 1 & UPSTREAM MEMBER 25
GUARDRAIL CONNECTION**
UPSTREAM MEMBER 1 & DOWNSTREAM MEMBER 25
SAME BUT OPPOSITE HAND
SCALE: 3" = 1'-0"

- NOTES:
- USE THE EXISTING BOTTOM RAIL HOLES (IF POSSIBLE) IN THE MEMBERS ON THE DOWNSTREAM SIDE TO CONNECT THE RAIL TO THE TRUSS.
 - SEE THIS SHEET FOR MEMBER LOCATIONS.
 - THE CONNECTION OF THE NEW CHANNEL GUARD RAIL TO THE TRUSS SHALL BE MADE WITH 3/4" DIA DOME HEADED BOLTS.

SHEET NAME: BRIDGE RAILING CONNECTION DETAILS	
PROJECT NAME: JOHNSON	HIGHWAY NO.: TH 2
PROJECT NUMBER: BHO 1448(18)	BRIDGE NO.: 6
	OVER: THE LAMOILLE RIVER
FILE NAME: /s+r1/90j067/sj067ral.dgn	PLOT DATE: 02-SEP-2005
PROJECT MANAGER: R. WHITCOMB	DRAWN BY: J.GILMORE
DESIGNED BY: C. MEUNIER	IPARM NAME: sc067ard.1
BRIDGE SHEET NUMBER:	SHEET 42 OF 73