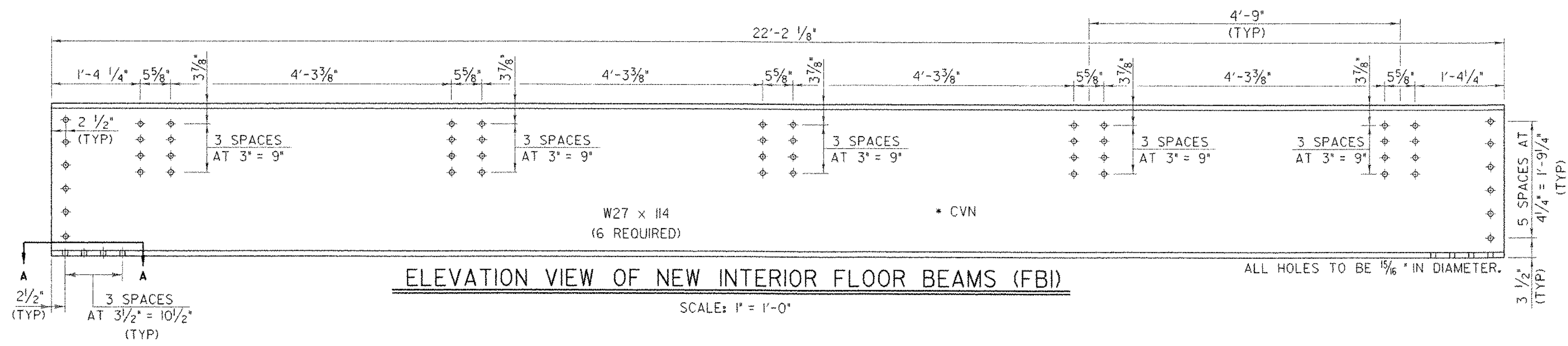
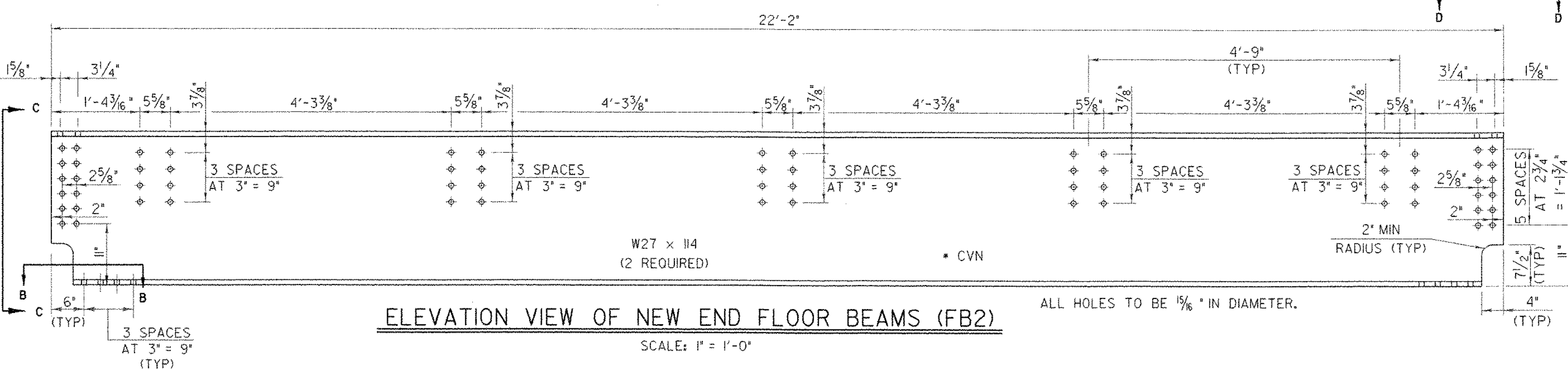


NOTES

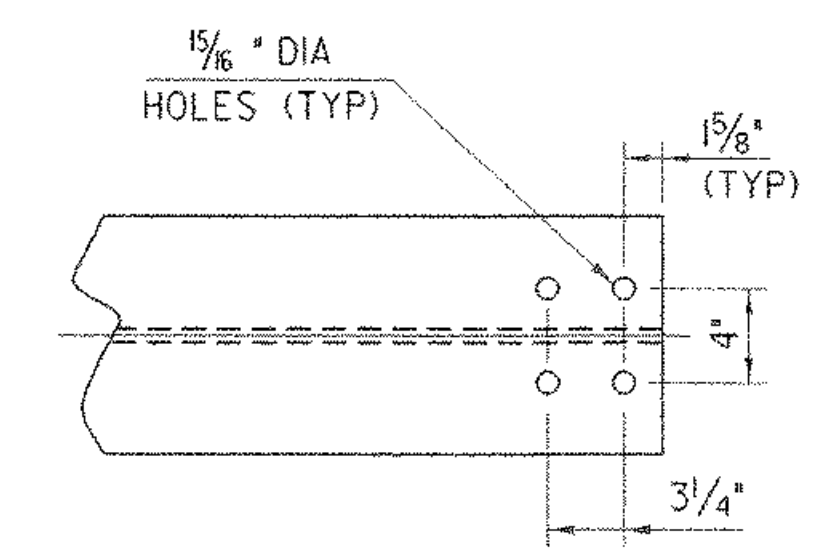
1. ALL OF THE EXISTING INTERMEDIATE FLOOR BEAMS ARE TO BE REPLACED AS WELL AS BOTH END FLOOR BEAMS.
2. * CVN CHARPY V-NOTCH TESTING.
3. THE END FLOOR BEAM CONNECTIONS SHOWN ON THIS SHEET AND CONNECTION PLATES SHOWN IN SECTION B-B WILL BE NEW AASHTO M270 GRADE 50 STRUCTURAL STEEL.



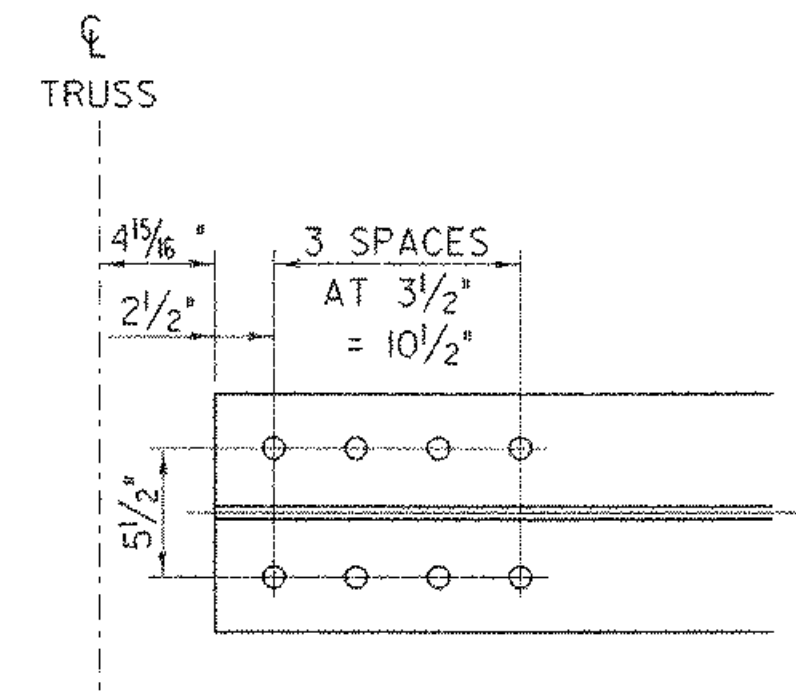
ELEVATION VIEW OF NEW INTERIOR FLOOR BEAMS (FBI)
SCALE: 1" = 1'-0"



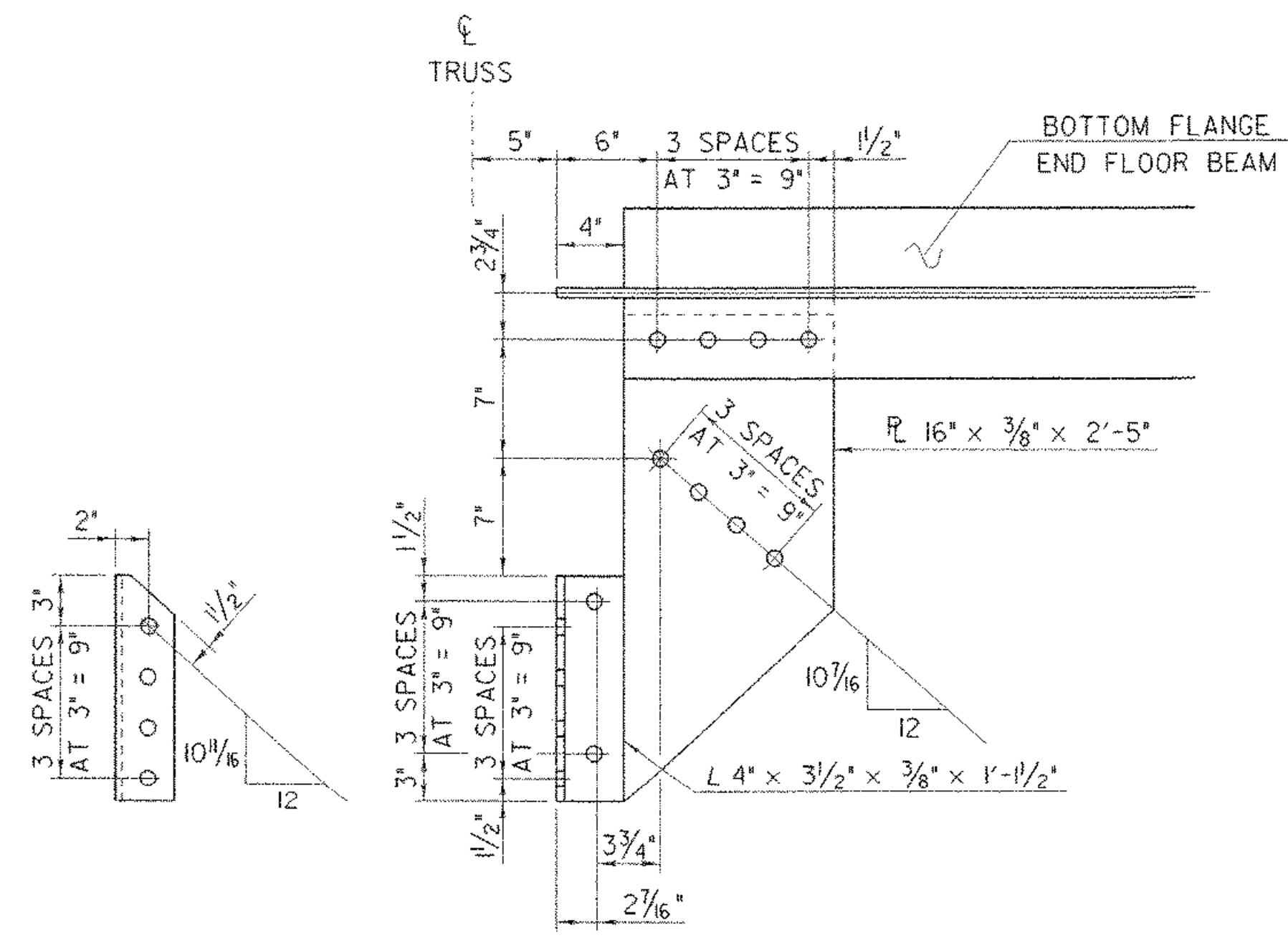
ELEVATION VIEW OF NEW END FLOOR BEAMS (FB2)
SCALE: 1" = 1'-0"



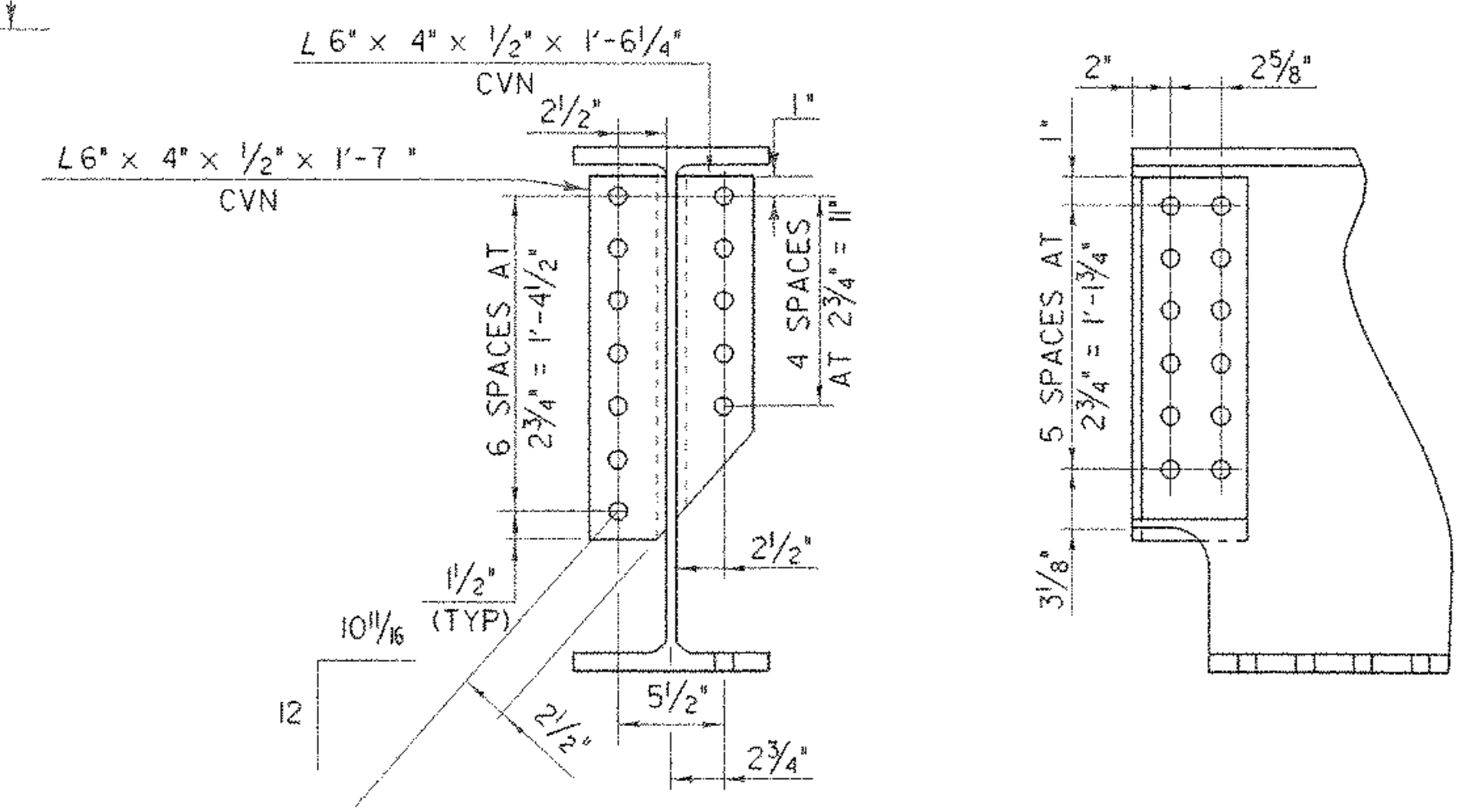
SECTION D-D
(TYP FOR EACH END OF END FLOOR BEAMS)
SCALE: 1/2" = 1'-0"



SECTION A-A
SCALE: 1/2" = 1'-0"
(TYPICAL FOR EACH END OF INTERIOR FLOOR BEAMS)



SECTION B-B
SCALE: 1/2" = 1'-0"
(TYPICAL FOR EACH END OF 'END FLOOR BEAMS')



SECTION C-C
END FLOOR BEAM CONNECTIONS
SCALE: 1/2" = 1'-0"

SHEET NAME: FLOOR BEAM DETAILS		
PROJECT NAME: JOHNSON	HIGHWAY NO.: TH 2	
PROJECT NUMBER: BHO 1448(18)	BRIDGE NO.: 6	
	OVER: THE LAMOLLE RIVER	
FILE NAME: /str/190j067/sj067trs.dgn	PLOT DATE: 02-SEP-2005	
PROJECT MANAGER: R. WHITCOMB	DRAWN BY: J. GILMORE	
DESIGNED BY: C. MEUNIER	IPARM NAME: sc067fbs.1	
BRIDGE SHEET NUMBER:	SHEET 23 OF 73	